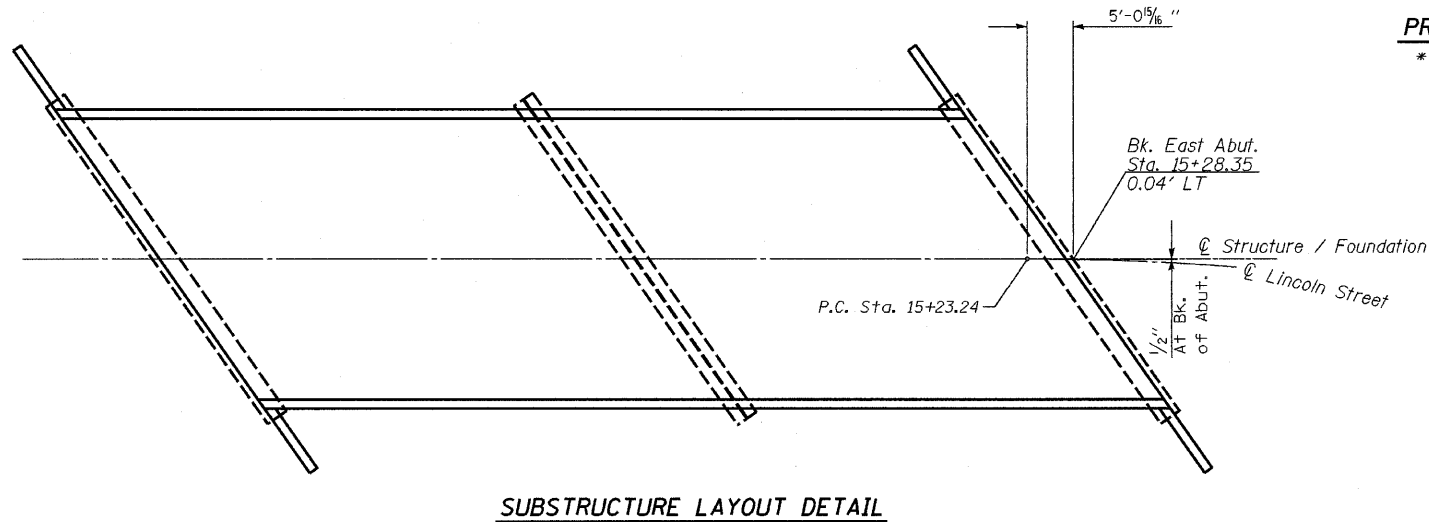
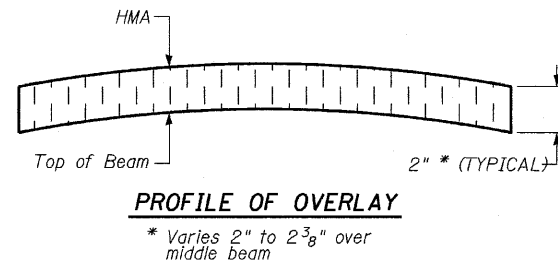
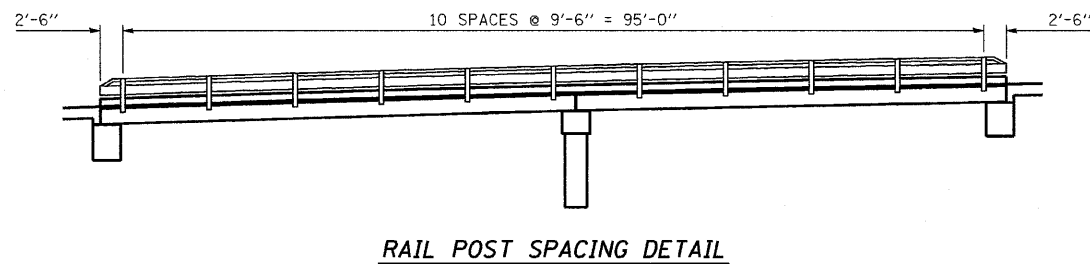
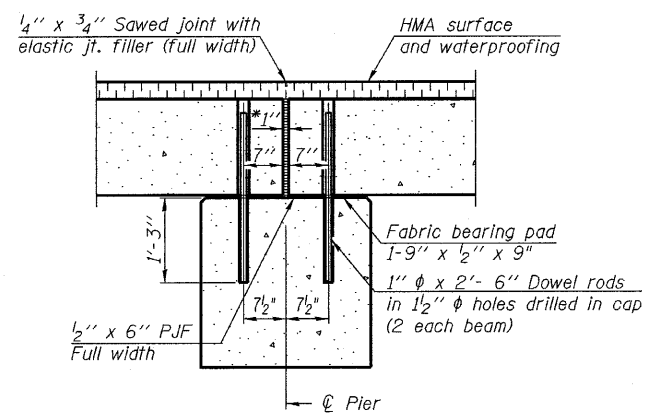
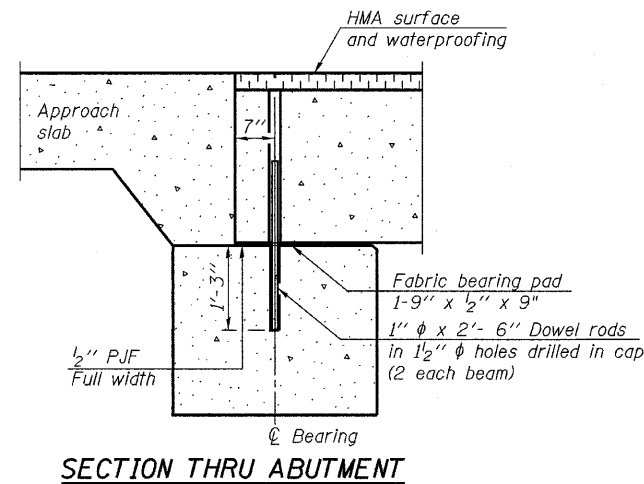
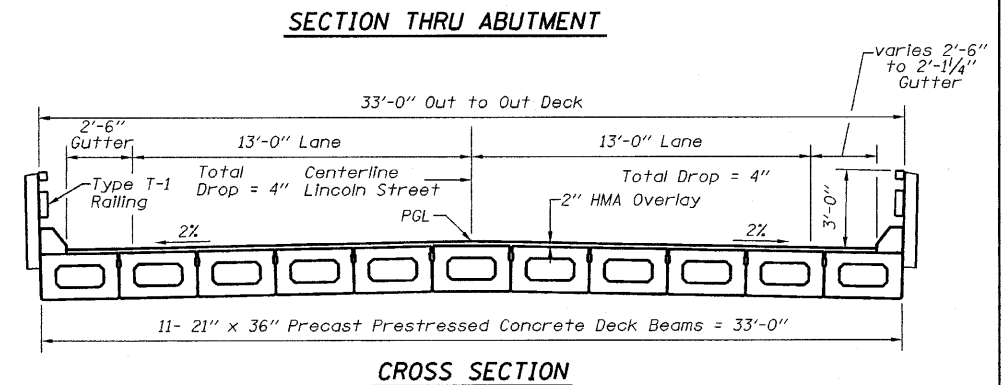
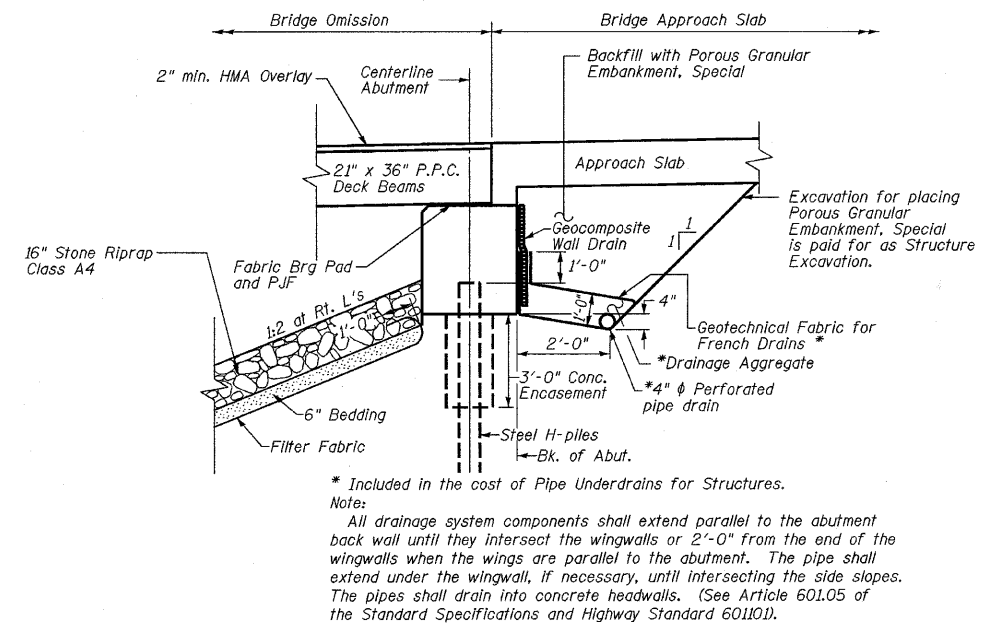
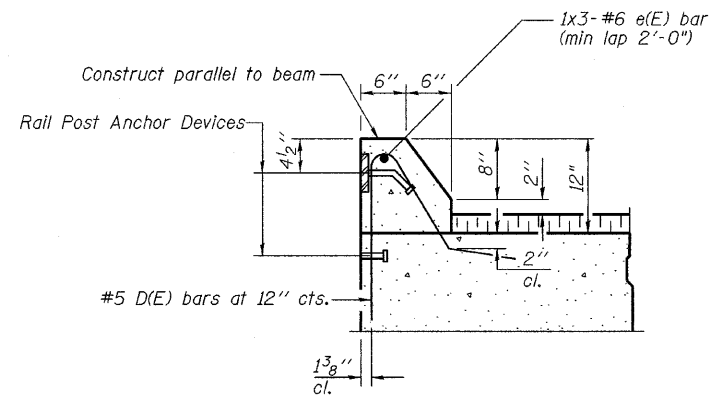


STATE OF ILLINOIS  
DEPARTMENT OF TRANSPORTATION



**BILL OF MATERIAL**

Bar	No.	Size	Length	Shape
e (E)	6	#6	34'-8"	
Reinforcement Bars, Epoxy Coated				Pound 310
Concrete Superstructure				Cu. Yd. 6.1



Notes:  
After beams have been erected, holes shall be drilled into substructure and anchor dowels placed. Dowel holes shall be filled with non-shrink grout to top of beam and allowed to cure min. 24 hrs. prior to grouting the shear keys. All horizontal dimensions are at right angles to beam ends. See sheets 4 & 6 of 17 for bearing pad details.

Dimensions are at Rt L's to centerline Pier and Abutment.

\*1" Jt. shall be filled with non-shrink grout. 1" dimension may vary to accommodate tolerance in beam lengths.

**SUBSTRUCTURE LAYOUT AND SUPERSTRUCTURE DETAILS  
STRUCTURE NO. 050-7201**

DESIGNED JKC
CHECKED GAE
DRAWN NV
CHECKED JKC

CHAMLIN & ASSOCIATES  
PERU ILLINOIS MORRIS

SHEET NO. 2	F.A.S. RTE. 1279	SECTION 6R, B	COUNTY LA SALLE	TOTAL SHEETS 190	SHEET NO. 124
17 SHEETS	SN 050-7201		CONTRACT NO. 66547		
FED. ROAD DIST. NO.		ILLINOIS FED. AID PROJECT			