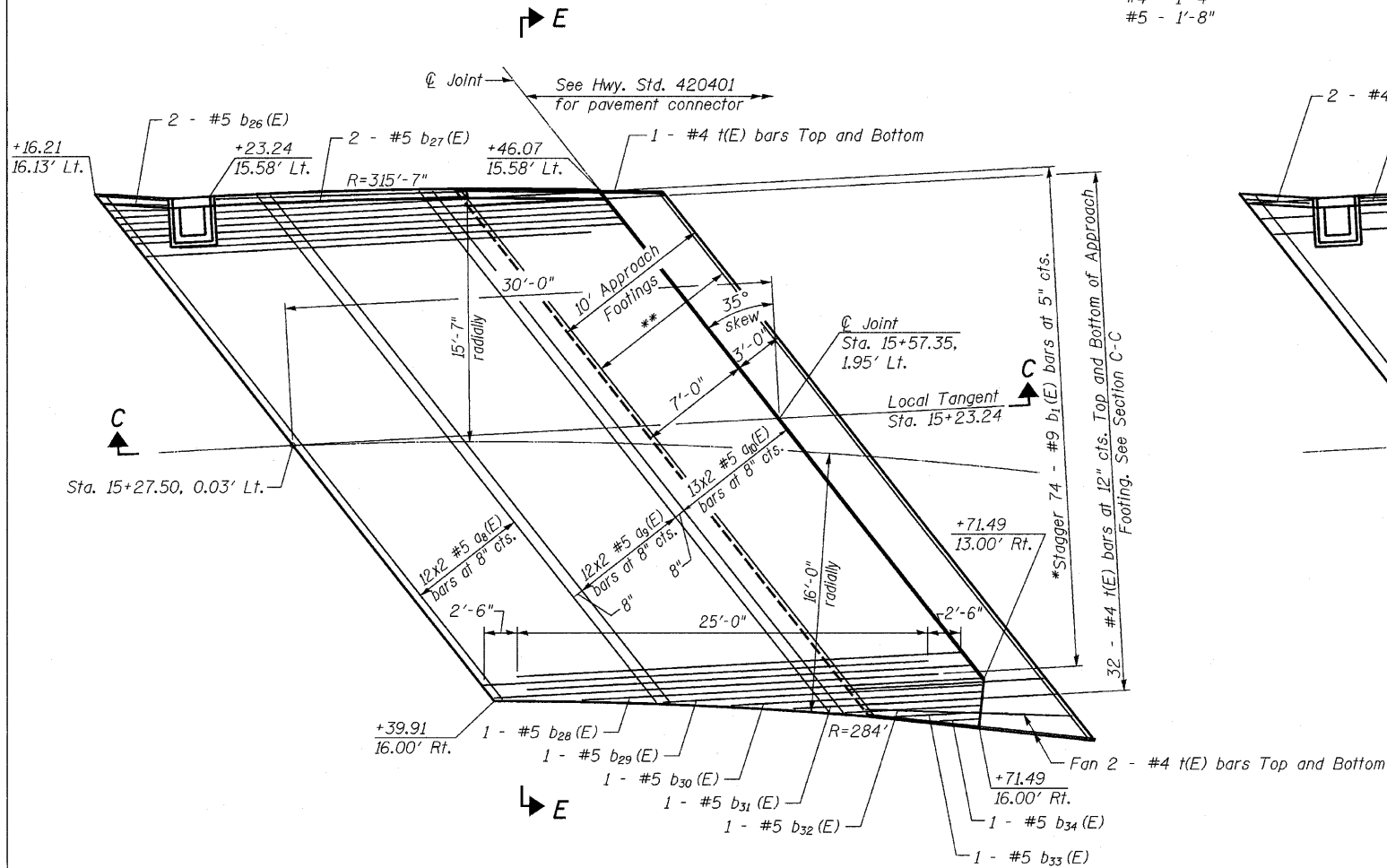


STATE OF ILLINOIS
DEPARTMENT OF TRANSPORTATION

** 20x2-#5 w₁(E) bars
at 6" cfs. Top and Bottom
of Approach Footing.
See Section C-C.

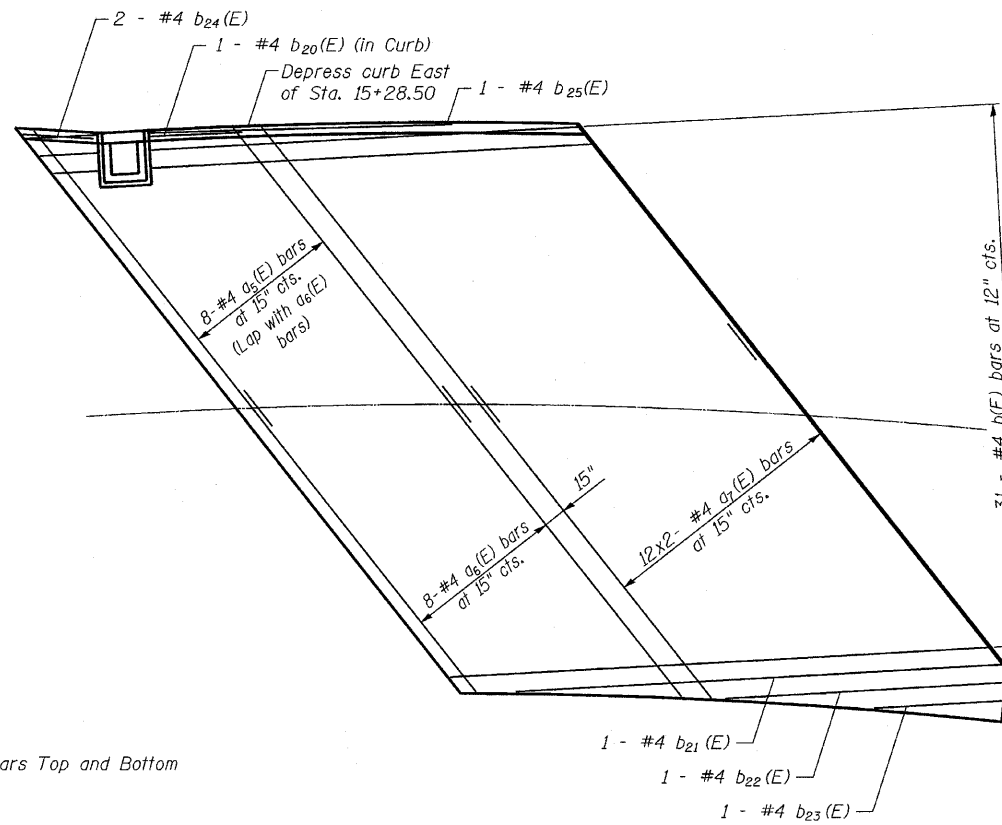
MIN LAP

#4 - 1'-4"
#5 - 1'-8"



DIMENSIONAL PLAN AND BOTTOM OF SLAB REINFORCEMENT

*Tilt #9 b₁(E) bars as required to maintain clearance

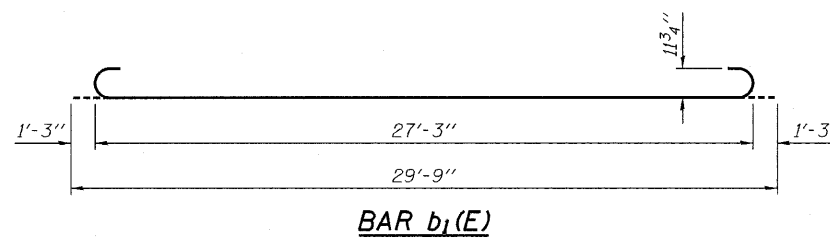
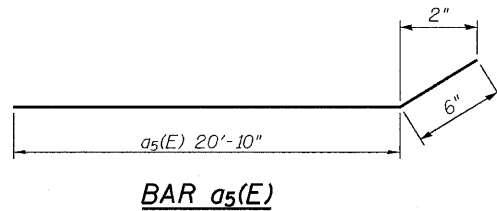


TOP OF SLAB REINFORCEMENT

BILL OF MATERIAL

Bar	No.	Size	Length	Shape
a ₅ (E)	8	#4	21'-4"	—
a ₆ (E)	8	#4	20'-8"	—
a ₇ (E)	24	#4	21'-6"	—
a ₈ (E)	24	#5	20'-4"	—
a ₉ (E)	24	#5	21'-2"	—
a ₁₀ (E)	26	#5	21'-8"	—
b(E)	31	#4	29'-8"	—
b ₁ (E)	74	#9	29'-9"	—
b ₉ (E)	1	#4	4'-0"	—
b ₂₀ (E)	1	#4	5'-0"	—
b ₂₁ (E)	1	#4	26'-9"	—
b ₂₂ (E)	1	#4	15'-4"	—
b ₂₃ (E)	1	#4	7'-0"	—
b ₂₄ (E)	1	#4	3'-10"	—
b ₂₅ (E)	1	#4	16'-8"	—
b ₂₆ (E)	2	#5	3'-10"	—
b ₂₇ (E)	2	#5	15'-5"	—
b ₂₈ (E)	1	#5	24'-7"	—
b ₂₉ (E)	1	#5	19'-7"	—
b ₃₀ (E)	1	#5	15'-4"	—
b ₃₁ (E)	1	#5	11'-7"	—
b ₃₂ (E)	1	#5	8'-3"	—
b ₃₃ (E)	1	#5	5'-2"	—
b ₃₄ (E)	1	#5	2'-3"	—
t(E)	70	#4	12'-0"	—
w ₁ (E)	80	#5	22'-2"	—
Concrete Superstructure		Cu. Yd.	50.5	
Concrete Structures		Cu. Yd.	13.0	
Reinforcement Bars, Epoxy Coated		Pound	12890	

DESIGNED	JKC
CHECKED	GAE
DRAWN	NV
CHECKED	JKC



**EAST APPROACH SLAB DETAILS
STRUCTURE NO. 050-7201**

CHAMLIN & ASSOCIATES
PERU ILLINOIS MORRIS

SHEET NO. 9 17 SHEETS	F.A.S. RTE.	SECTION	COUNTY	TOTAL SHEETS	SHEET NO.
	1279	6R, B	LA SALLE	190	131
	SN 050-7201			CONTRACT NO. 66547	
	FED. ROAD DIST. NO.	ILLINOIS	FED. AID PROJECT		