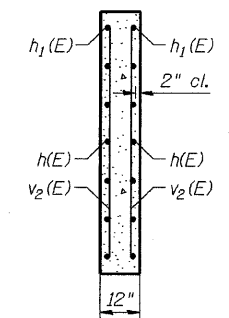
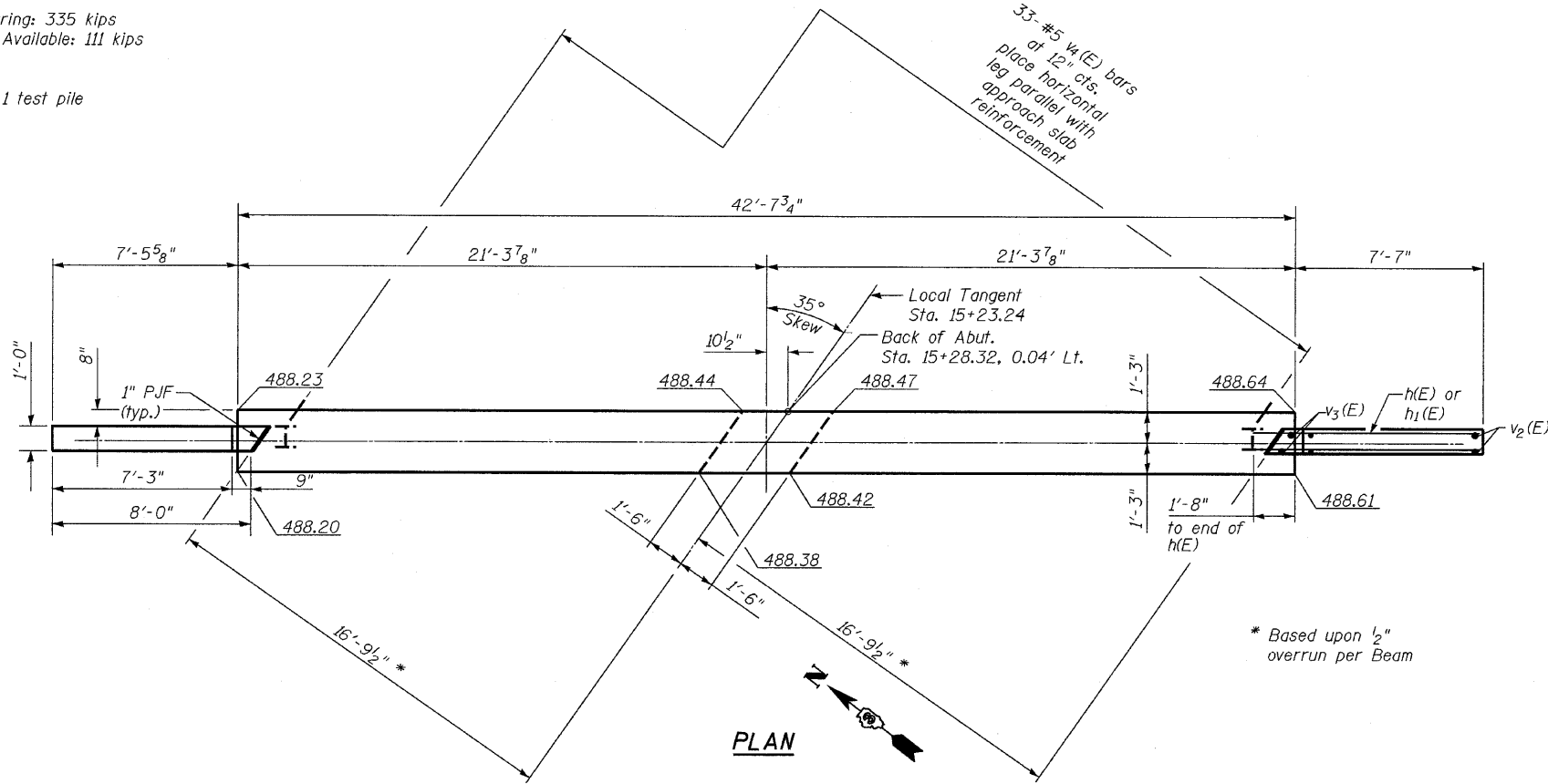


**PILE DATA**

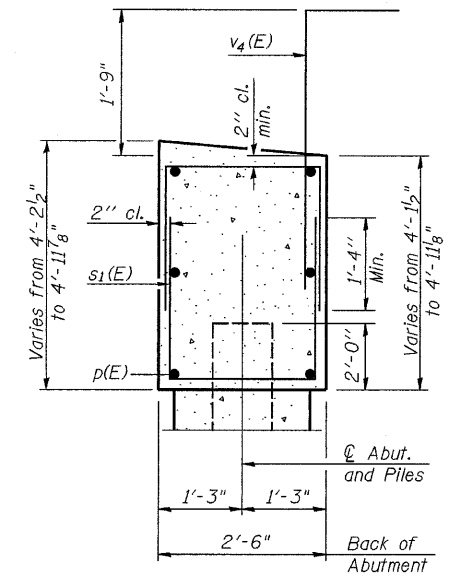
Type: Steel HP10X42  
 Nominal Required Bearing: 335 kips  
 Allowable Resistance Available: 111 kips  
 Est. length: 17 Ft.

No. Required: 6 plus 1 test pile

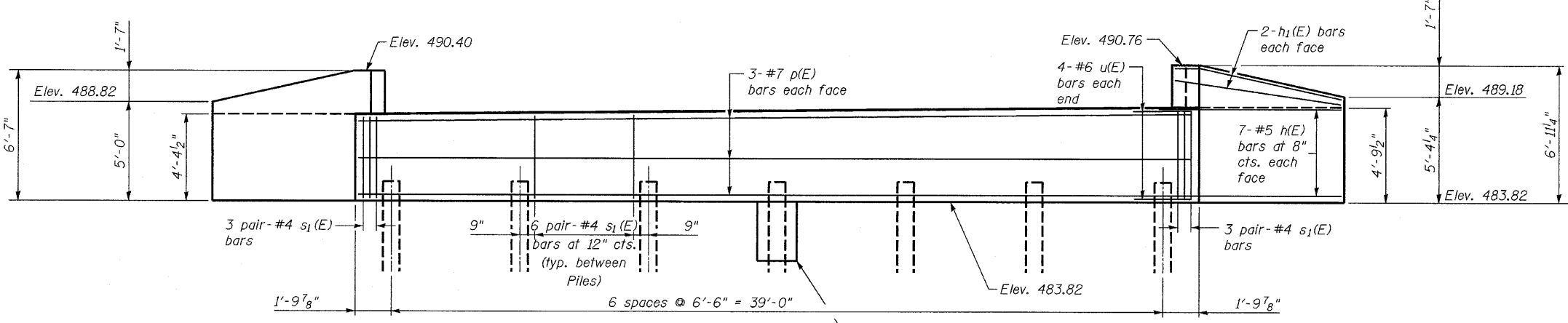
STATE OF ILLINOIS  
 DEPARTMENT OF TRANSPORTATION



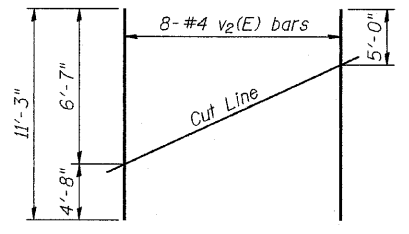
SEC. THRU WINGWALL



SEC. THRU ABUT.

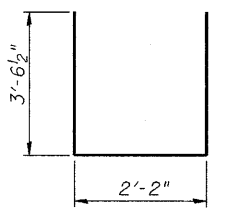


ELEVATION

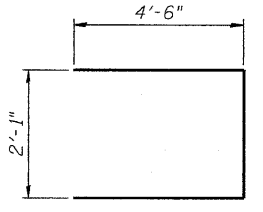


FIELD CUTTING DIAGRAM

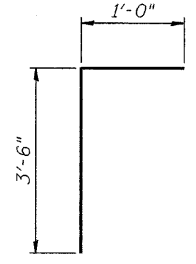
Order v2(E) full length. Cut as shown and use remainder of bars in opposite wingwall.



BAR s1(E)



BAR u(E)



BAR v4(E)

**BILL OF MATERIAL**

Bar	No.	Size	Length	Shape
h(E)	24	#5	9'-1"	—
h1(E)	8	#5	8'-0"	—
p(E)	6	#7	42'-4"	—
s1(E)	84	#4	9'-3"	U
u(E)	8	#6	11'-1"	□
v2(E)	16	#4	11'-3"	—
v3(E)	4	#4	6'-4"	—
v4(E)	33	#5	4'-6"	L
Concrete Structures			Cu. Yd.	21.7
Reinforcement Bars, Epoxy Coated			Pound	1760
Furnishing Steel Piles HP10X42			Foot	102
Driving Piles			Foot	102
Test Pile, Steel HP10X42			Each	1
Concrete Encasement			Cu. Yd.	2.5

For details of piles and Concrete Encasement, see sheet 15 of 17.

DESIGNED	JKC
CHECKED	GAE
DRAWN	NV
CHECKED	JKC

SHEET NO. 13 17 SHEETS	F.A.S. RTE.	SECTION	COUNTY	TOTAL SHEETS	SHEET NO.
	1279	6R, B	LA SALLE	190	135
	SN 050-7201		CONTRACT NO. 66547		
FED. ROAD DIST. NO.		ILLINOIS	FED. AID PROJECT		

CHAMBLIN & ASSOCIATES  
 PERU ILLINOIS MORRIS

**EAST ABUTMENT DETAIL  
 STRUCTURE NO. 050-7201**