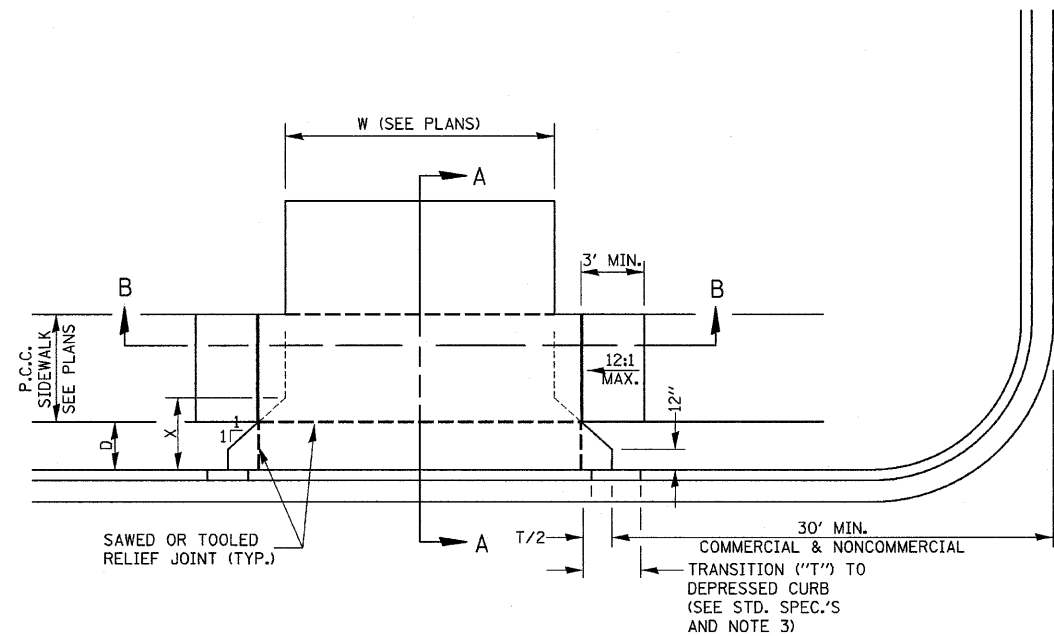


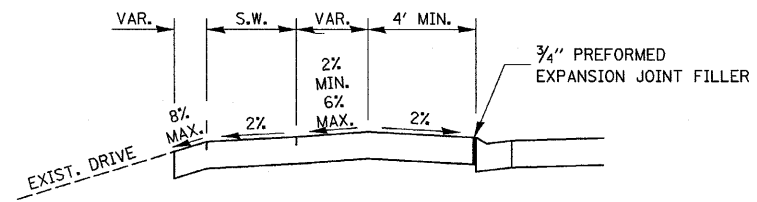
CASE I (D ≥ X)



CASE I (D < X)

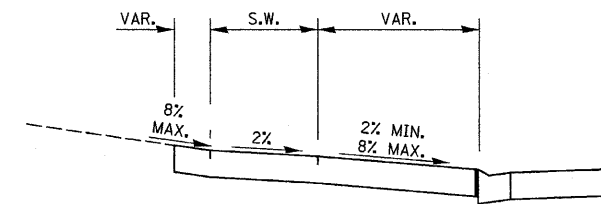
GENERAL NOTES:

1. X = 7' (NON-COMMERCIAL) X = 15' (COMMERCIAL)
2. COST OF EXPANSION JOINTS AND RELIEF JOINTS SHALL BE INCLUDED IN THE COST OF THE P.C.C. DRIVEWAY PAVEMENT.
3. AS THE DIMENSION "D" APPROACHES ZERO, THE TRANSITION TO DEPRESSED CURB SHALL BE NO STEEPER THAN 12:1

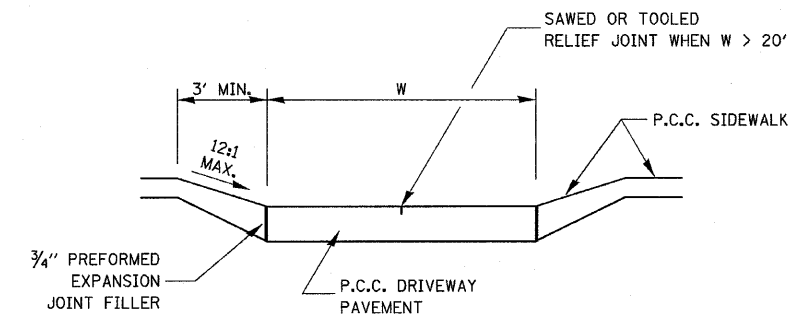


DEPRESSED ENTRANCE\*  
SECTION A-A

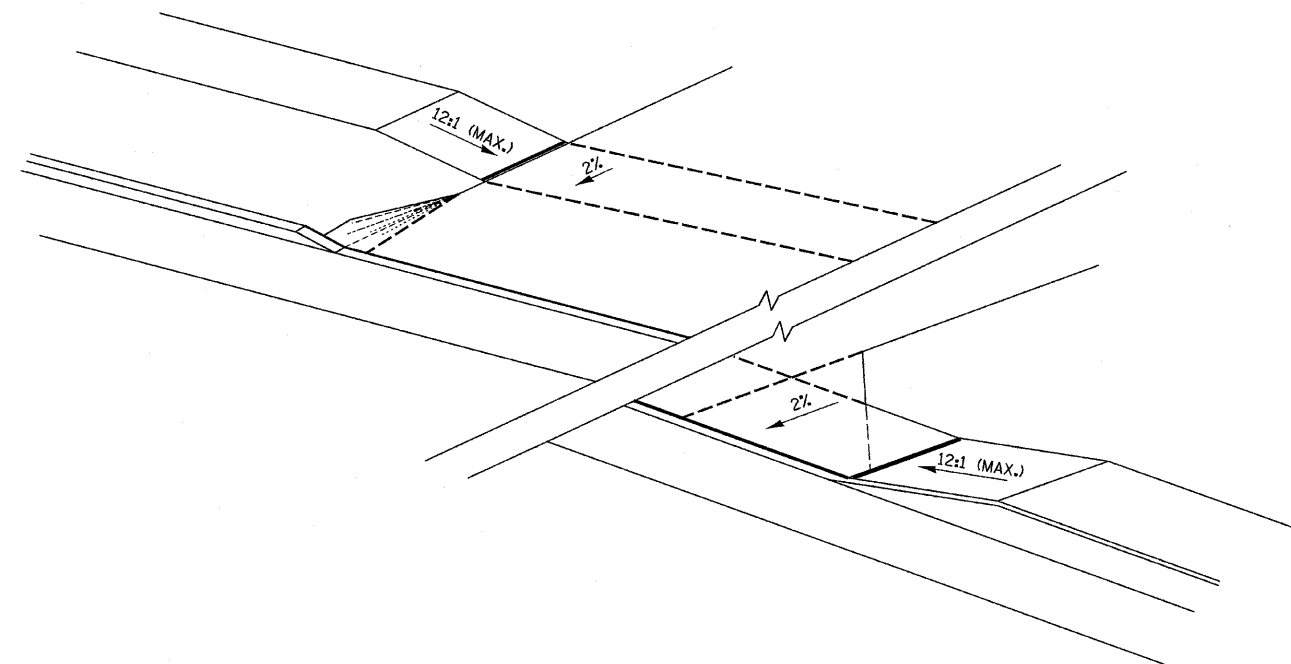
\*(SEE X-SECTIONS FOR ENTRANCE PROFILE.)



ELEVATED ENTRANCE\*  
SECTION A-A



SECTION B-B



FILE NAME = D366547-SHT-DETS.DGN	USER NAME = ---	DESIGNED - JKC	REVISED -
		DRAWN - LAG	REVISED -
		CHECKED - JKC	REVISED -
		DATE - 08/10	REVISED -

DESIGNED - JKC	REVISED -
DRAWN - LAG	REVISED -
CHECKED - JKC	REVISED -
DATE - 08/10	REVISED -

STATE OF ILLINOIS  
DEPARTMENT OF TRANSPORTATION

DETAILS

SCALE: NONE SHEET NO. OF SHEETS STA. TO STA.

F.A.S. RTE. 1279	SECTION 6R,B	COUNTY LASALLE	TOTAL SHEETS 190	SHEET NO. 143
FED. ROAD DIST. NO. ILLINOIS		FED. AID PROJECT		
CONTRACT NO. 66547				