

STATE OF ILLINOIS
DEPARTMENT OF TRANSPORTATION
DIVISION OF HIGHWAYS

**PROPOSED
HIGHWAY PLANS**

FAP ROUTE 68 (ILLINOIS 23)
SECTION (102) BR-1
PROJECT ACBRF-0068 (107)
STRUCTURE REPLACEMENT OVER SHORT POINT CREEK.

LIVINGSTON COUNTY

C-93-150-10

F.A.P. RTE.	SECTION	COUNTY	TOTAL SHEETS	SHEET NO.
68	(102) BR-1	LIVINGSTON	58	1
		ILLINOIS	CONTRACT NO. 66822	

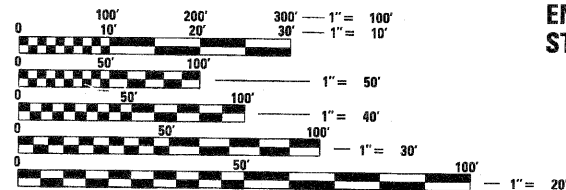
P-93-034-08
D-93-059-10



HIGHWAY CLASSIFICATION
RURAL MINOR ARTERIAL
CURRENT ADT (2007): ADT=1450
PC = 87.3% SU = 8.6% MU = 4.1%

INDEX OF SHEET

1. COVER SHEET
2. HIGHWAY STANDARDS AND GENERAL NOTES
3. SUMMARY OF QUANTITIES
4. TYPICAL SECTIONS
5. SCHEDULE OF QUANTITIES
6. ALIGNMENT, TIES, AND BENCHMARKS
7. PLAN AND PROFILE
- 8-10. STAGES OF CONSTRUCTION AND TRAFFIC CONTROL
11. EROSION & SEDIMENT CONTROL DETAILS
- 12-37. STRUCTURE PLANS
- 38-52. EXISTING BRIDGE PLANS FOR INFORMATION ONLY
- 53-55. DISTRICT DETAILS
- 56-58. CROSS SECTIONS



FULL SIZE PLANS HAVE BEEN PREPARED USING STANDARD ENGINEERING SCALES. REDUCED SIZED PLANS WILL NOT CONFORM TO STANDARD SCALES. IN MAKING MEASUREMENTS ON REDUCED PLANS, THE ABOVE SCALES MAY BE USED.

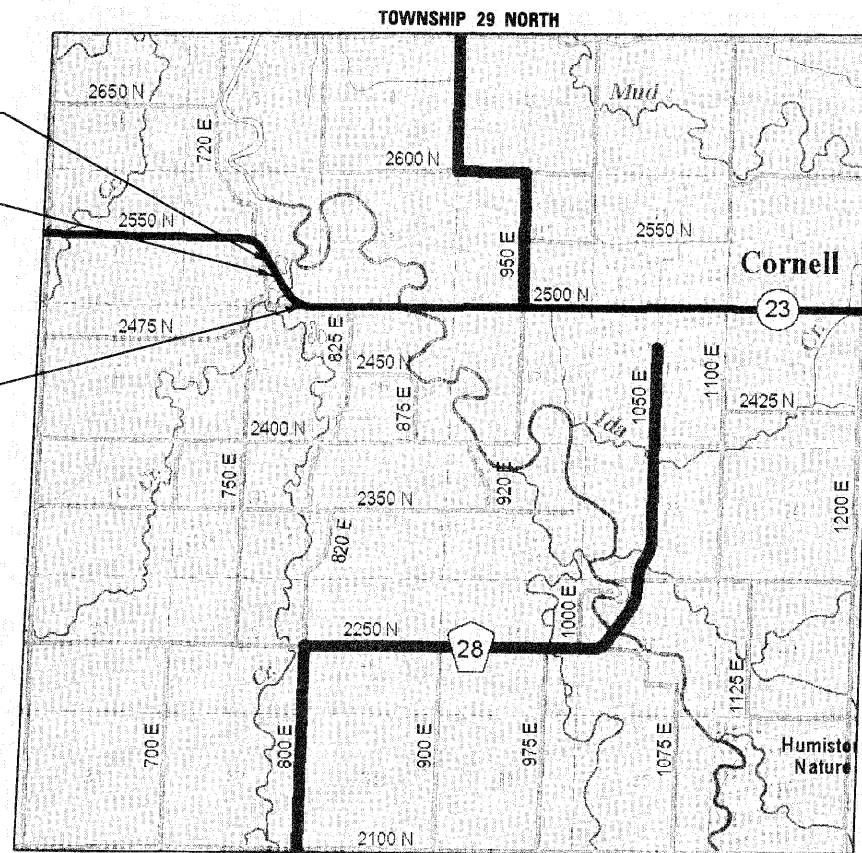
J.U.L.I.E.
JOINT UTILITY LOCATION INFORMATION FOR EXCAVATION
1-800-892-0123
OR 811

DISTRICT 3 NO. (815) 434-6131
PROJECT ENGINEER: CRAIG REED
UNIT CHIEF: MARK JONES
TOWNSHIP(S): AMITY
CONTRACT NO. 66822

BEGIN IMPROVEMENTS
STA. 618 + 00

STA. 625 + 84
STRUCTURE REPLACEMENT
FOR IL ROUTE 23 OVER
SHORT POINT CREEK
EXIST SN 053-0161
PROP. SN 053-0189

END IMPROVEMENTS
STA. 630 + 00



LOCATION MAP

1" = 3/4 MILE
GROSS LENGTH = 1200 FT. = 0.227 MILE
NET LENGTH = 1200 FT. = 0.227 MILE



Steven P. Fessenbecker
08-05-2010

STEVEN P. FESSENBECKER, P.E.
LIC. NO. 062-051254
EXPIRES 11/30/2011



KUDRNA & ASSOCIATES, LTD.
ILLINOIS PROFESSIONAL DESIGN FIRM
LICENSE NO. 184-000920
EXPIRES 04/30/2011

STATE OF ILLINOIS
DEPARTMENT OF TRANSPORTATION
DIVISION OF HIGHWAYS

SUBMITTED August 18, 2010
Harry Peterson
DEPUTY DIRECTOR OF HIGHWAYS, REGION ENGINEER

October 1, 2010
Scott E. Stitt, P.E.
ACTING ENGINEER OF DESIGN AND ENVIRONMENT

October 1, 2010
Christine M. Reed
DIRECTOR OF HIGHWAYS, CHIEF ENGINEER

**PRINTED BY THE AUTHORITY
OF THE STATE OF ILLINOIS**