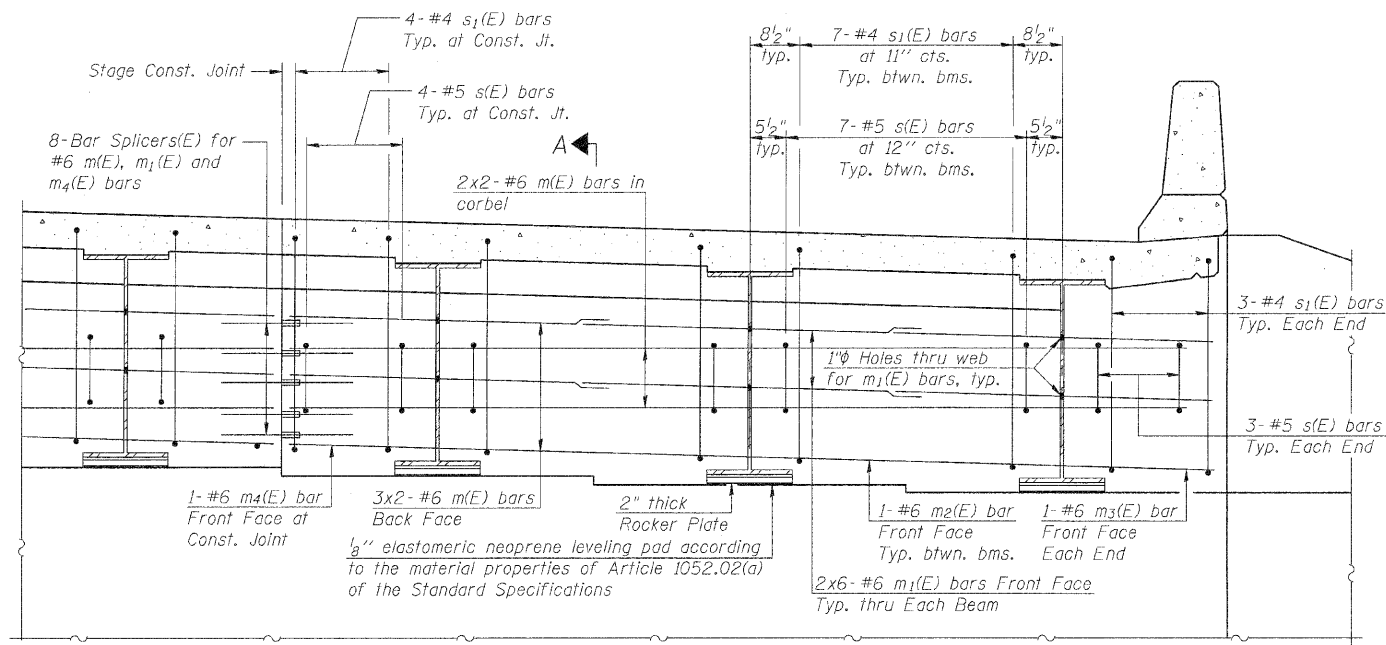


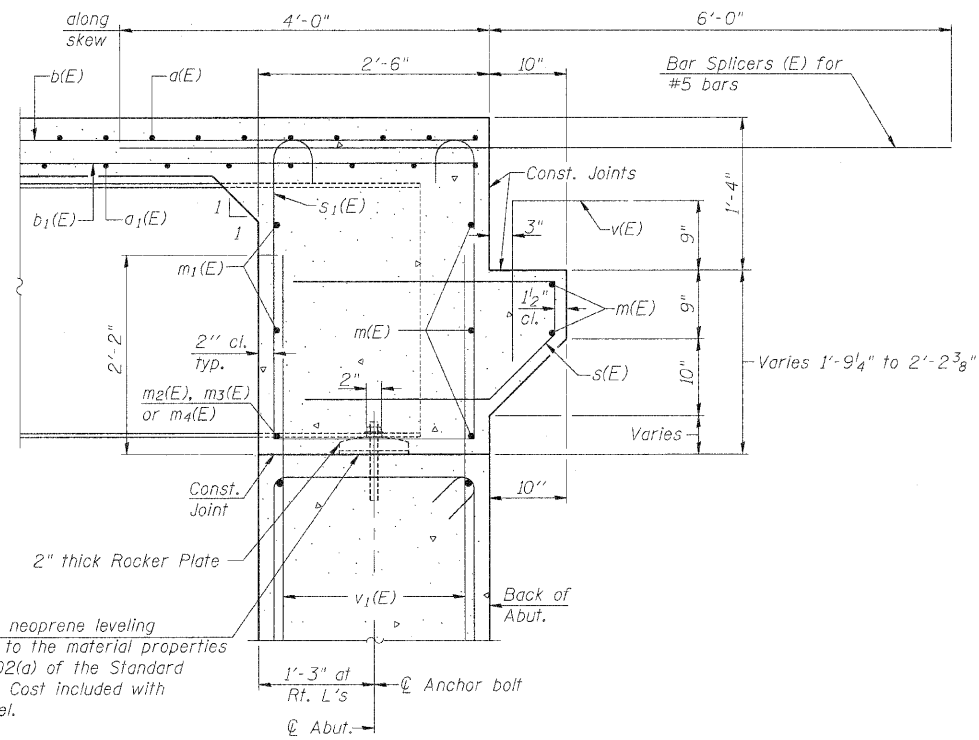
STATE OF ILLINOIS
DEPARTMENT OF TRANSPORTATION



DIAPHRAGM ELEVATION AT ABUTMENT

Notes:
Reinforcement bars in diaphragm are billed with superstructure on sheet 10 of 26.
Concrete in diaphragm is included with Concrete Superstructure on sheet 10 of 26.
For details of bars s(E), s1(E) & v(E) see sheet 10 of 26.
The s(E) and s1(E) bars shall be placed parallel to the beams. Spacing for these bars shall be at right angles to the beams.

MIN. BAR LAP
#6 bar = 3'-4"



SECTION A-A
Dimensions at right angles to abutment, except as shown.

ABUTMENT DIAPHRAGM DETAILS
STRUCTURE NO. 053-0189

ZROKA engineering
Zroka Engineering, P.C.
4216 North Hermitage
Chicago, IL 60613

DESIGNED	LAS
CHECKED	JLA
DRAWN	SAW
CHECKED	LAS

SI-DSI 11-1-09

SHEET NO. 11 OF 26 SHEETS	F.A.P. RTE.	SECTION	COUNTY	TOTAL SHEETS	SHEET NO.
	68	(102)BR-1	LIVINGSTON	58	22
SN 053-0189			CONTRACT NO. 66822		
FED. ROAD DIST. NO. ILLINOIS FED. AID PROJECT					