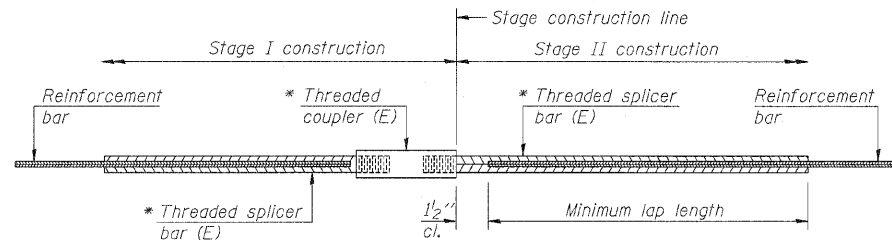


STATE OF ILLINOIS  
DEPARTMENT OF TRANSPORTATION



STANDARD BAR SPLICER ASSEMBLY

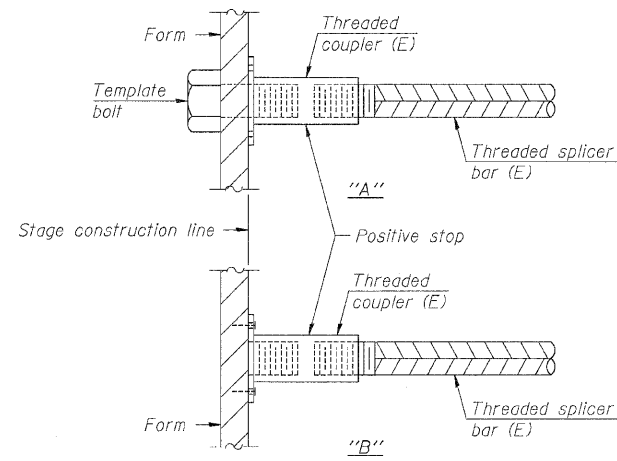
Bar size to be spliced	Minimum Lap Lengths			
	Table 1	Table 2	Table 3	Table 4
3, 4	1'-5"	1'-11"	2'-1"	2'-4"
5	1'-9"	2'-5"	2'-7"	2'-11"
6	2'-1"	2'-11"	3'-1"	3'-6"
7	2'-9"	3'-10"	4'-2"	4'-8"
8	3'-8"	5'-1"	5'-5"	6'-2"
9	4'-7"	6'-5"	6'-10"	7'-9"

Table 1: Black bar, 0.8 Class C  
Table 2: Black bar, Top bar lap, 0.8 Class C  
Table 3: Epoxy bar, 0.8 Class C  
Table 4: Epoxy bar, Top bar lap, 0.8 Class C

Threaded splicer bar length = min. lap length + 1/2" + thread length

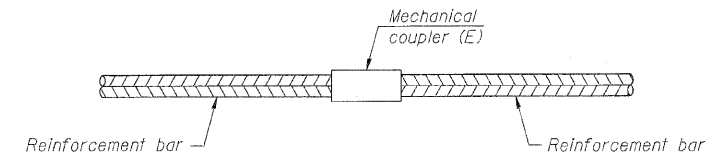
\* Epoxy not required on Bar Splicer Assembly components used in conjunction with black bars.

Location	Bar size	No. assemblies required	Table for minimum lap length
Deck a(E) bars	5	304	3
Deck a1(E) bars	5	183	3
2- Approach slabs a10(E) bars	4	50	4
2- Approach slabs a11(E) bars	5	92	3
2- Approach footings w(E) bars	5	80	3
2- Abutments Top p(E) bars	7	14	4
2- Abutments Bottom p(E) or p1(E) bars	7	8	3
2- Abutments Each Face p3(E) bars	5	24	4
2- Abutment Diaphragms m(E) bars	6	16	4
2- Piers p10(E) bars	9	16	4
2- Piers h10(E) bars	5	28	4
2- Piers p11(E) bars	8	16	3
2- Piers h16(E) bars	5	288	4



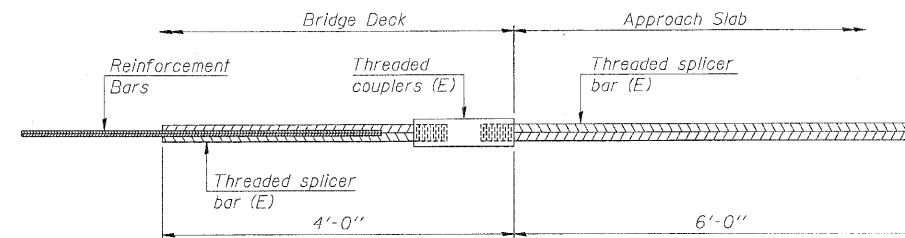
INSTALLATION AND SETTING METHODS

"A" : Set bar splicer assembly by means of a template bolt.  
"B" : Set bar splicer assembly by nailing to wood forms or cementing to steel forms.  
(E) : Indicates epoxy coating.



STANDARD MECHANICAL SPLICER

Location	Bar size	No. assemblies required

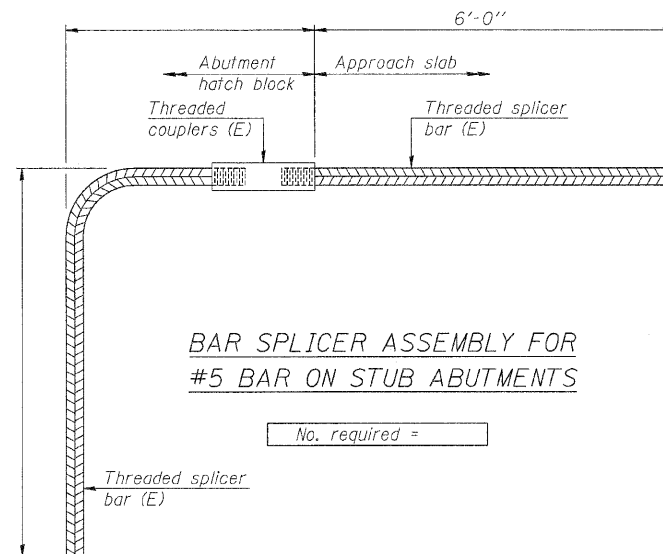


BAR SPLICER ASSEMBLY FOR #5 BAR ON INTEGRAL OR SEMI-INTEGRAL ABUTMENTS

No. required = 90

NOTES

Splicer bars shall be deformed with threaded ends and have a minimum 60 ksi yield strength.  
All reinforcement shall be lapped and tied to the splicer bars.  
Bar splicer assemblies shall be epoxy coated according to the requirements for reinforcement bars. See Section 508 of the Standard Specifications.  
See special provision for Mechanical Splicers.  
See approved list of bar splicer assemblies and mechanical splicers for alternatives.



BAR SPLICER ASSEMBLY FOR #5 BAR ON STUB ABUTMENTS

No. required =

BAR SPLICER ASSEMBLY AND MECHANICAL SPLICER DETAILS  
STRUCTURE NO. 053-0189

SHEET NO. 21 OF 26 SHEETS	F.A.P. RTE. 68	SECTION (102)BR-1	COUNTY LIVINGSTON	TOTAL SHEETS 58	SHEET NO. 32
FED. ROAD DIST. NO. ILLINOIS FED. AID PROJECT					

ZROKA engineering  
Zroka Engineering, P.C.  
4216 North Hermitage  
Chicago, IL 60613

DESIGNED	LAS
CHECKED	JLA
DRAWN	SAW
CHECKED	LAS

BSD-1 11-1-09