

F.A.P. RTE.	SECTION	COUNTY	TOTAL SHEETS	SHEET NO.
317	(25)BR-2	LIVINGSTON	58	1
		ILLINOIS	CONTRACT NO. 66823	

STATE OF ILLINOIS
DEPARTMENT OF TRANSPORTATION
DIVISION OF HIGHWAYS

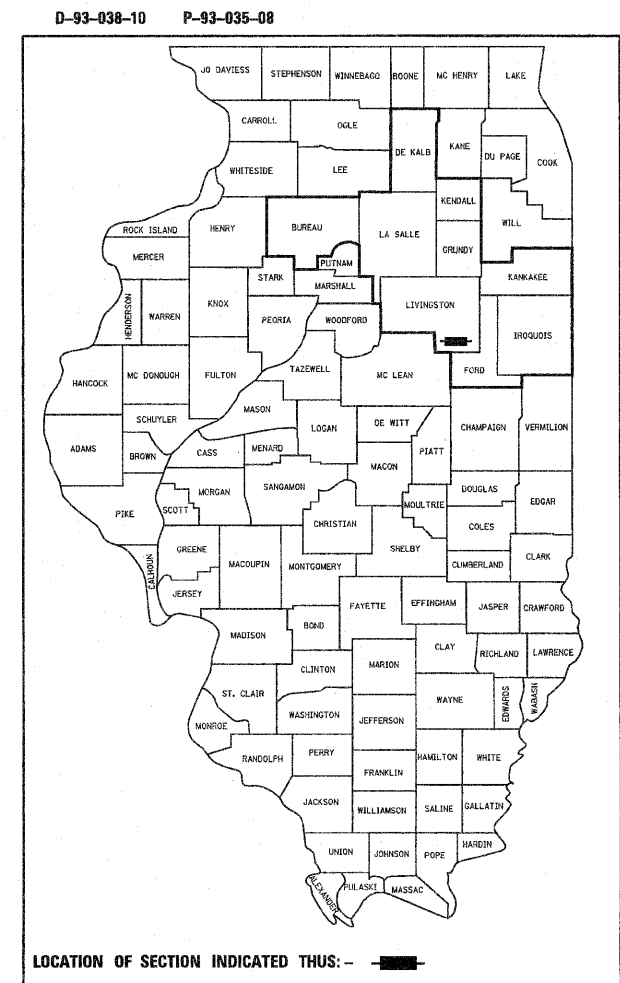
PROPOSED HIGHWAY PLANS

F.A.P. ROUTE 317 (U.S. 24)
SECTION (25)BR-2
PROJECT ACNHF-0317(086)
STRUCTURE REPLACEMENT
LIVINGSTON COUNTY

C-93-087-10

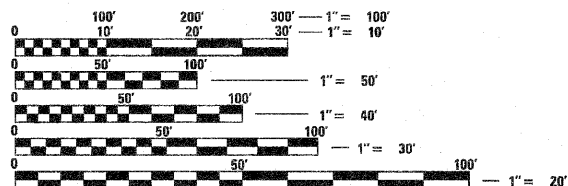
INDEX OF SHEETS

- 1 COVER SHEET
- 2 HIGHWAY STANDARDS, GENERAL NOTES AND COMMITMENTS
- 3-4 SUMMARY OF QUANTITIES
- 5-7 TYPICAL SECTIONS
- 8-10 SCHEDULE OF QUANTITIES
- 11 ALIGNMENT, SURVEY TIES AND BENCHMARKS
- 12-14 PLAN & PROFILE SHEETS
- 15-16 DRAINAGE PLAN & PROFILE SHEETS
- 17 RIGHT-OF-WAY PLAN
- 18-19 STAGE I CONSTRUCTION
- 20-21 STAGE II CONSTRUCTION
- 22-23 EROSION CONTROL PLAN
- 24-49 BRIDGE PLANS S.N. 053-0188 (PR.)/053-0152 (EX.)
- 50-52 DETAILS
- 53-58 CROSS SECTIONS



FUNCTIONAL CLASSIFICATION
URBAN OTHER PRINCIPAL ARTERIAL
2011 ADT = 5300
P.V. = 81.1% S.U. = 13.3% M.U. = 5.6%

FOR LIST OF STANDARDS, SEE SHEET NO. 2

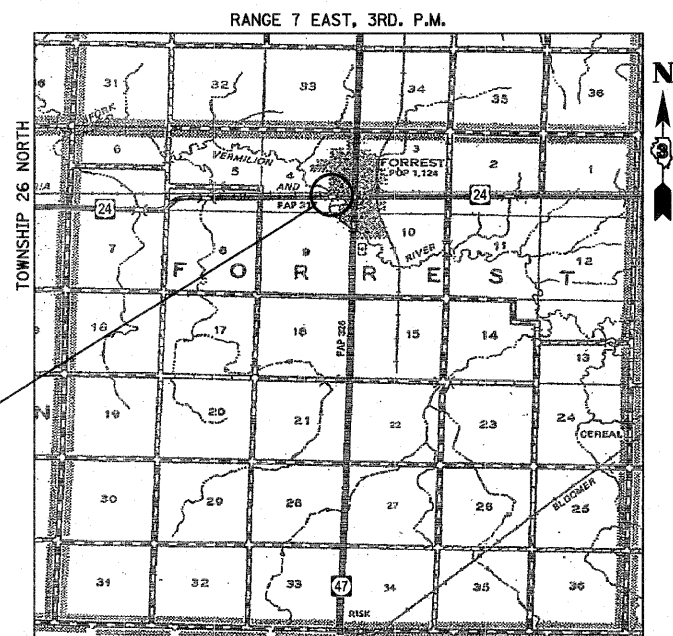


FULL SIZE PLANS HAVE BEEN PREPARED USING STANDARD ENGINEERING SCALES. REDUCED SIZED PLANS WILL NOT CONFORM TO STANDARD SCALES. IN MAKING MEASUREMENTS ON REDUCED PLANS, THE ABOVE SCALES MAY BE USED.

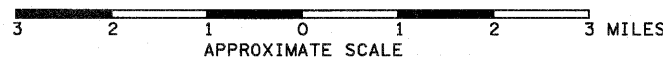
J.U.L.I.E.
JOINT UTILITY LOCATION INFORMATION FOR EXCAVATION
1-800-892-0123
OR 811

DISTRICT 3 NO. (815) 434-6131
PROJECT ENGINEER: CRAIG REED
UNIT CHIEF: BRAD DUNCAN
CONTRACT NO. 66823

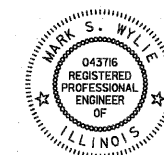
S.N. 053-0188 (PR.)/053-0152 (EX.)
STATION 473+87.00
STRUCTURE REPLACEMENT OVER
SOUTH FORK OF THE VERMILION
RIVER, 0.3 MILES WEST OF IL 47
AT THE VILLAGE OF FORREST
(IMPROVEMENT:
STA. 468+65.00 TO STA. 480+38.00)



LOCATION MAP



GROSS LENGTH = 1,173.0 FT. = 0.22 MILE
NET LENGTH = 1,173.0 FT. = 0.22 MILE



Mark S. Wylie Date 8/13/10
MARK S. WYLIE
REGISTERED PROFESSIONAL ENGINEER
NO. 062-043716
EXPIRATION 11/30/11

STATE OF ILLINOIS
DEPARTMENT OF TRANSPORTATION
DIVISION OF HIGHWAYS

SUBMITTED August 17 2010
[Signature]
DEPUTY DIRECTOR OF HIGHWAYS, REGION ENGINEER

October 1 2010
[Signature]
acting ENGINEER OF DESIGN AND ENVIRONMENT

October 1 2010
[Signature]
DIRECTOR OF HIGHWAYS, CHIEF ENGINEER

**PRINTED BY THE AUTHORITY
OF THE STATE OF ILLINOIS**