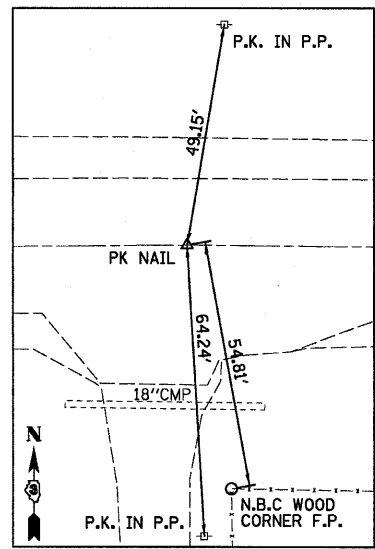


**CURVE DATA**  
 PI STA. = 476+73.22  
 $\Delta$  = 6° 20' 00" (LT)  
 D = 2° 02' 30"  
 R = 2,806.32'  
 T = 155.26'  
 L = 310.20'  
 E = 4.29'  
 $e$  = 2.2%  
 T.R. = 36.14'  
 S.E. RUN = 39.75'  
 P.C. STA. = 475+17.96  
 P.T. STA. = 478+28.16

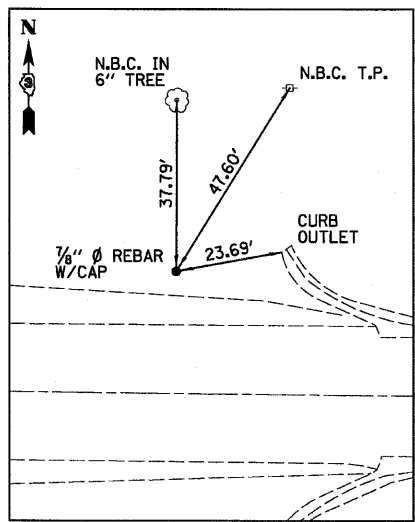
**BENCHMARK #1**  
 STA 468+07, 48' LT  
 R.R. SPIKE IN P.P.  
 ELEV=680.48

**BENCHMARK #2**  
 STA 472+89, 19' RT  
 CHISELED "X" ON  
 S.W. WINGWALL  
 ELEV=682.81

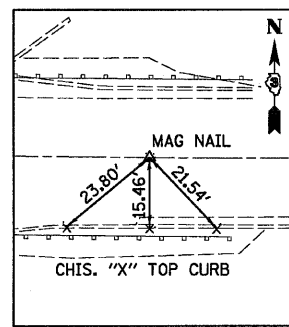
**BENCHMARK #3**  
 STA 475+76, 51' RT  
 R.R. SPIKE IN P.P.  
 ELEV=680.91



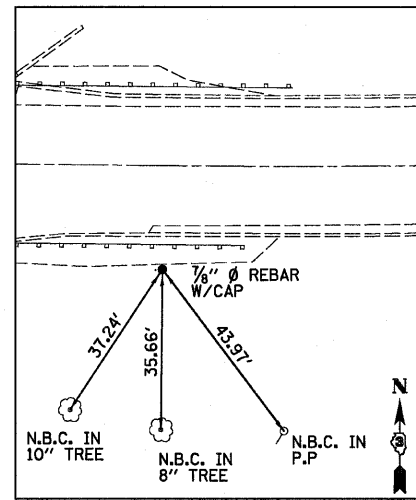
US 24  
 STA 468+00.00 (P.O.T.)  
 N = 1486657.815  
 E = 960847.553



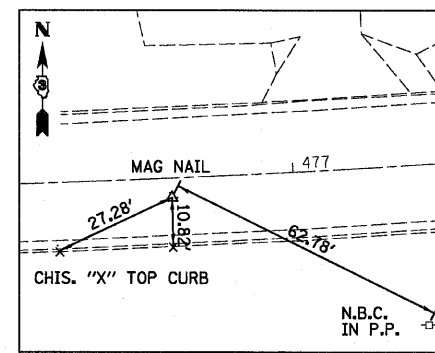
CONTROL POINT #3  
 STA 469+29.16, 29.17' LT  
 N = 1486683.651  
 E = 960976.988  
 ELEV = 678.858



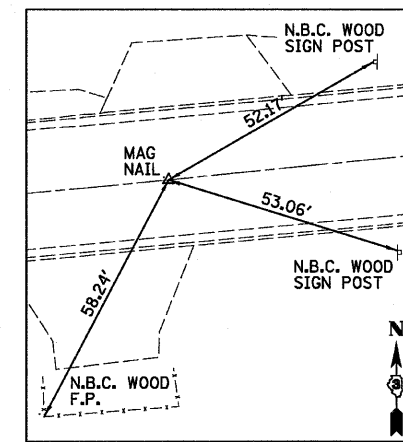
US 24  
 STA 475+17.96 (P.C.)  
 N = 1486650.323  
 E = 961565.472



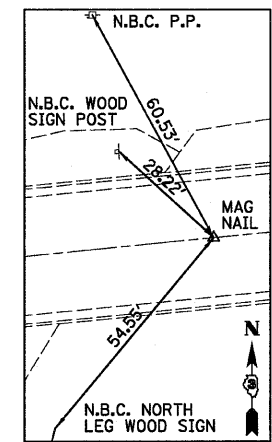
CONTROL POINT #7  
 STA 475+42.12, 22.96' RT  
 N = 1486627.214  
 E = 961589.591  
 ELEV = 680.582



US 24  
 STA 476+73.22, 4.29' RT (P.I.)  
 N = 1486648.702  
 E = 961720.723



US 24  
 STA 478+28.16 (P.T.)  
 N = 1486664.218  
 E = 961875.206



US 24  
 STA 482+47.82 (P.O.T.)  
 N = 1486706.156  
 E = 962292.765

FILE NAME =	USER NAME = #USER#	DESIGNED - JML	REVISED -	<b>STATE OF ILLINOIS DEPARTMENT OF TRANSPORTATION</b>	<b>ALIGNMENT, SURVEY TIES AND BENCHMARKS</b>	F.A.P. RTE.	SECTION	COUNTY	TOTAL SHEETS	SHEET NO.	
#FILE#		DRAWN - JJO	REVISED -			317	(25)BR-2	LIVINGSTON	58	11	
	PLOT SCALE = #SCALE#	CHECKED - MSW	REVISED -			CONTRACT NO. 66823					
	PLOT DATE = #DATE#	DATE - 08/13/10	REVISED -			FED. ROAD DIST. NO. ILLINOIS FED. AID PROJECT					