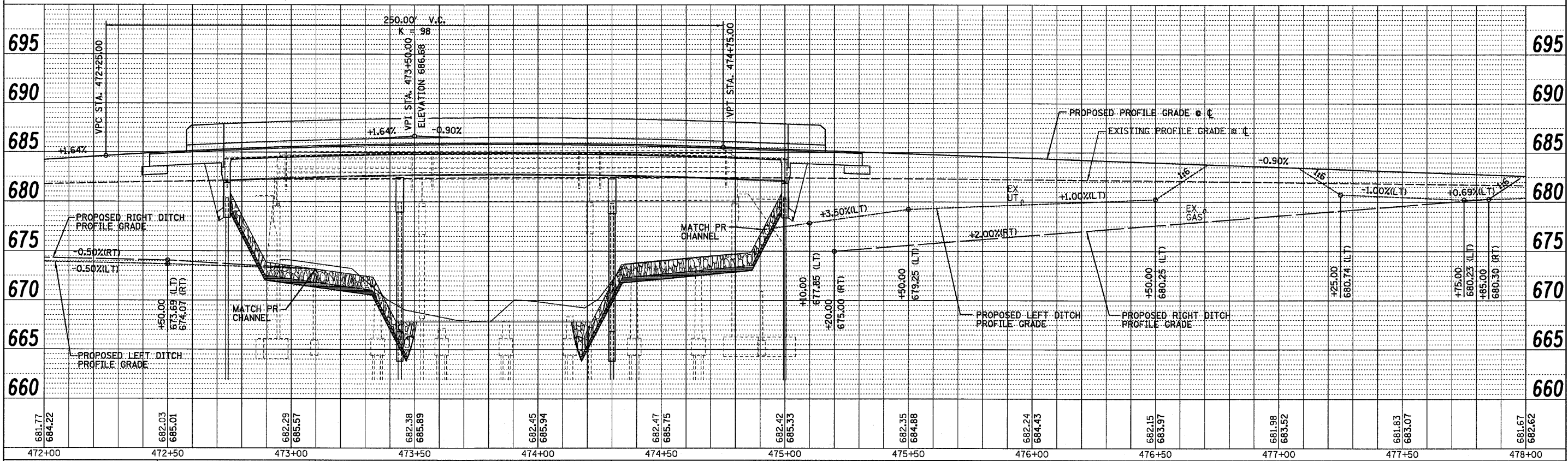
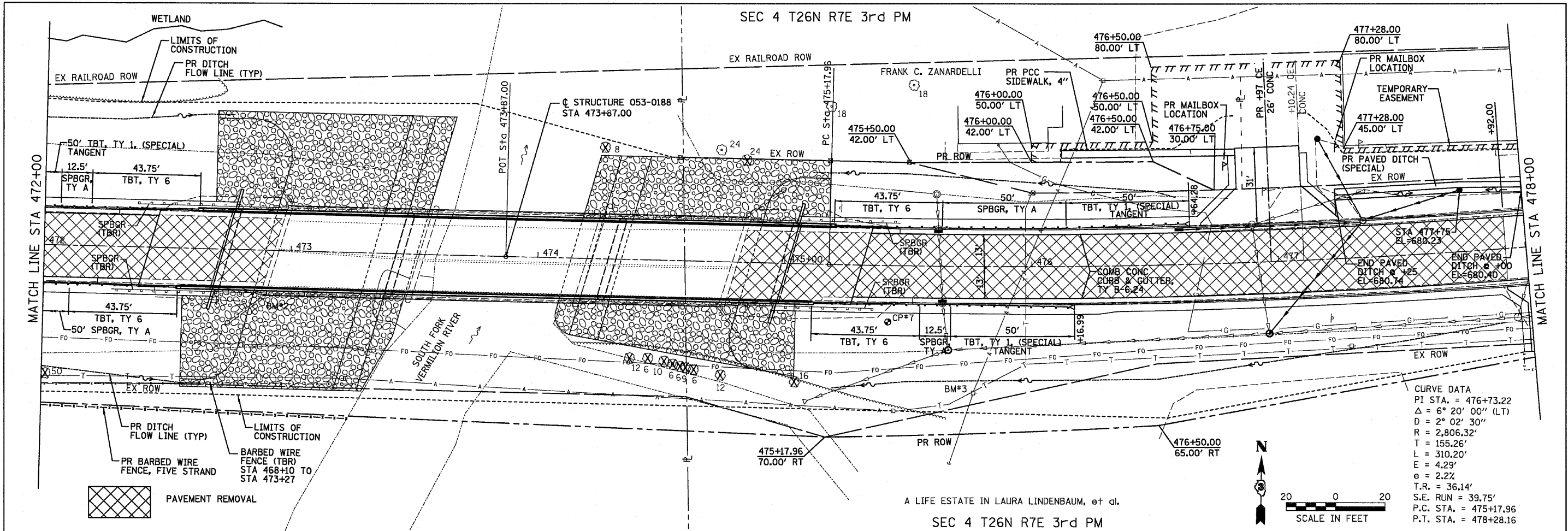


PLAN	SURVEYED	BY	DATE
NOTE BOOK	ALIGNED		
NO.	NO.		

PROFILE	SURVEYED	BY	DATE
NOTE BOOK	ALIGNED		
NO.	NO.		



FILE NAME =	USER NAME = #USER#	DESIGNED - JML	REVISED -	STATE OF ILLINOIS DEPARTMENT OF TRANSPORTATION	PLAN AND PROFILE	F.A.P. RTE. 317	SECTION (25)BR-2	COUNTY LIVINGSTON	TOTAL SHEETS 58	SHEET NO. 13
#FILE#	PLOT SCALE = #SCALE#	DRAWN - JJO	REVISED -			SCALE: 1"=40'	SHEET NO. OF SHEETS STA. TO STA.	FED. ROAD DIST. NO.	ILLINOIS FED. AID PROJECT	CONTRACT NO. 66823
	PLOT DATE = #DATE#	CHECKED - JML	REVISED -							
		DATE - 08/13/10	REVISED -							

FARNSWORTH GROUP, INC.

CONSULTING ENGINEERS - 2709 MCGRAW DRIVE BLOOMINGTON, ILLINOIS 61704 (309) 663-8435 / (309) 663-1571 FAX