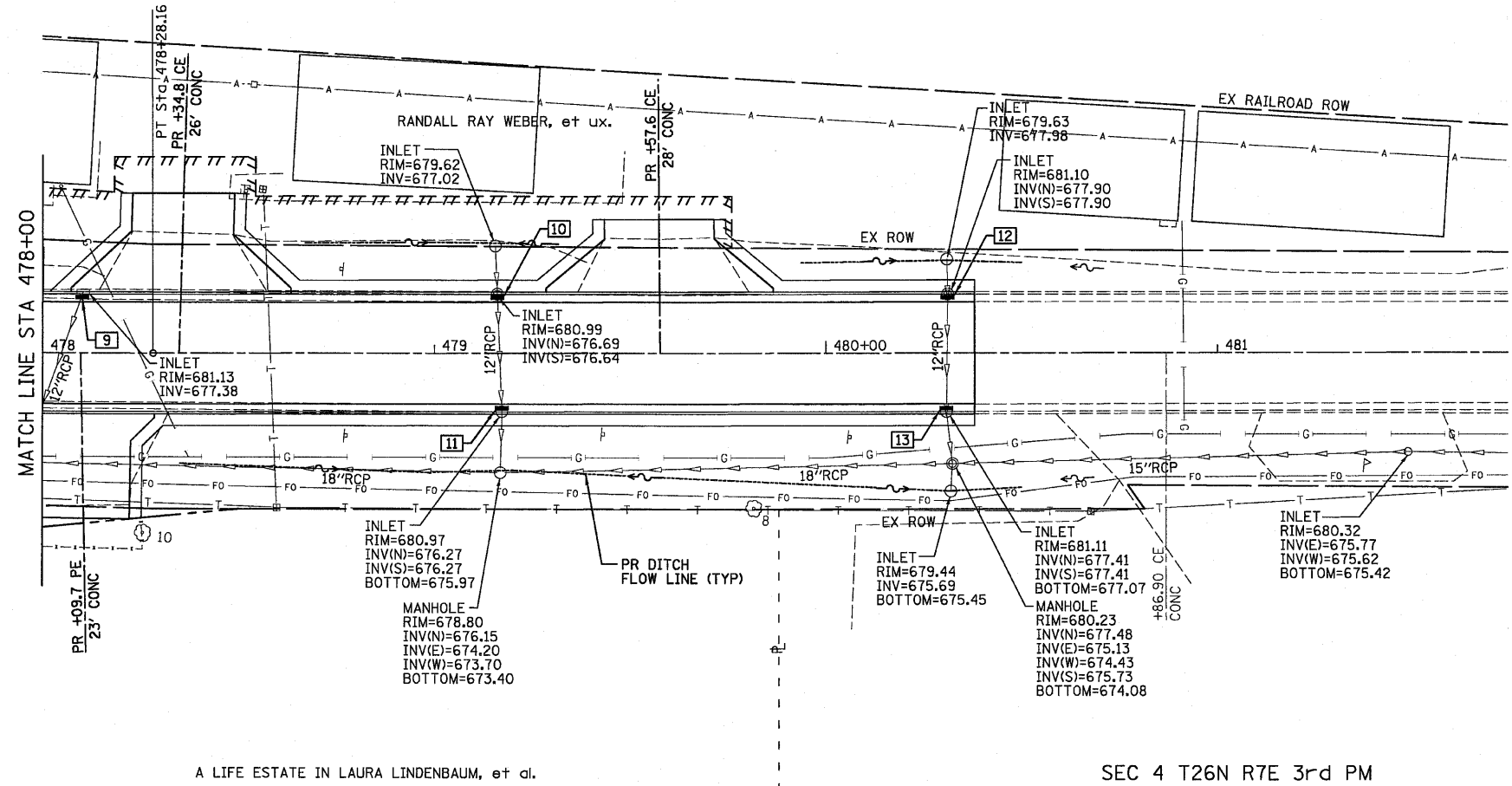
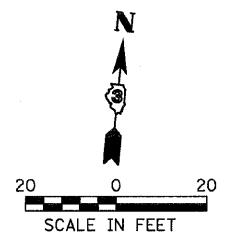


SEC 4 T26N R7E 3rd PM

PLAN	SURVEYED	BY	DATE
	ALIGNED		
	CHECKED		
	RT. OF WAY		
	CHECKED		
	NO.		



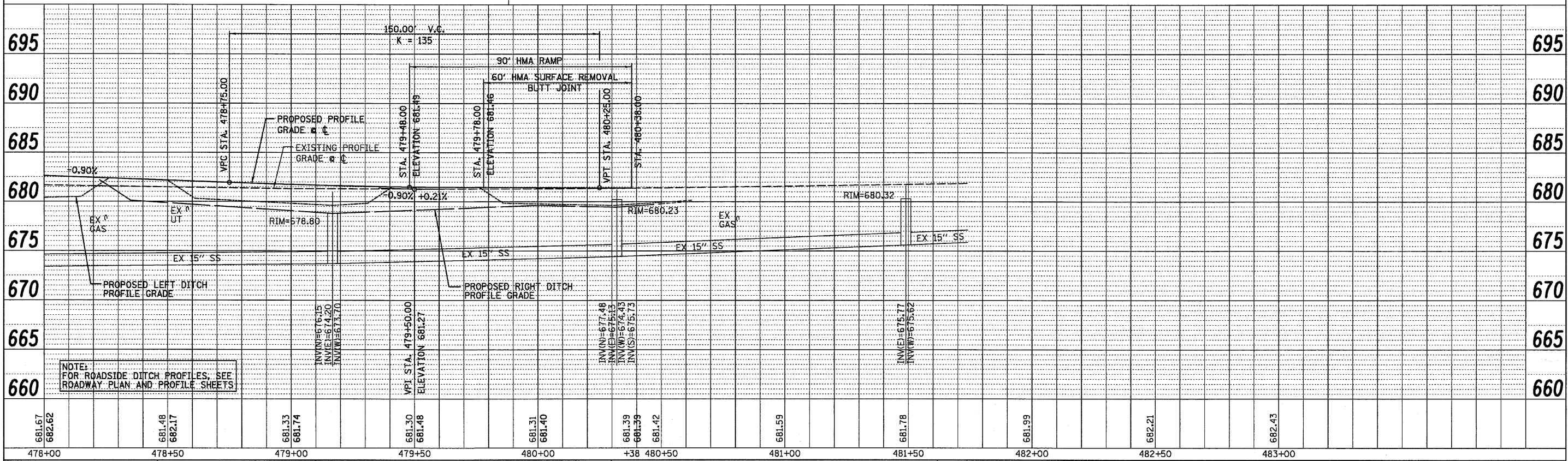
- 9 STA 478+10.12, 15.00'LT INLET TO BE ADJUSTED W/ NEW FR & GR (SPECIAL) TC=682.26 (DEPRESSED)
- 10 STA 479+16.08, 15.00'LT INLET TO BE ADJUSTED W/ NEW TY 3 FR & GR TC=681.78
- 11 STA 479+17.20, 15.00'RT INLET TO BE ADJUSTED W/ NEW TY 3 FR & GR TC=681.77
- 12 STA 480+31.10, 15.00'LT INLET TO BE ADJUSTED W/ NEW TY 3 FR & GR TC=681.53
- 13 STA 480+30.79, 15.00'RT INLET TO BE ADJUSTED W/ NEW TY 3 FR & GR TC=681.53



A LIFE ESTATE IN LAURA LINDENBAUM, et al.

SEC 4 T26N R7E 3rd PM

PROFILE	SURVEYED	BY	DATE
	GRADES		
	CHECKED		
	BL. INDEXED		
	STRUCTURE		
	NOTATIONS		
	CHKD		
	NO.		



FILE NAME =	USER NAME = #USER#	DESIGNED - JML	REVISED -	STATE OF ILLINOIS DEPARTMENT OF TRANSPORTATION	DRAINAGE PLAN AND PROFILE	F.A.P. RTE. 317	SECTION (25)BR-2	COUNTY LIVINGSTON	TOTAL SHEETS 58	SHEET NO. 16		
#FILE#	PLOT SCALE = #SCALE#	DRAWN - JJO	REVISED -			SCALE:	SHEET NO. OF SHEETS	STA. TO STA.	CONTRACT NO. 66823			
	PLOT DATE = #DATE#	CHECKED - JML	REVISED -			FED. ROAD DIST. NO. ILLINOIS FED. AID PROJECT						
		DATE - 08/13/10	REVISED -									

FARNSWORTH GROUP, INC.

CONSULTING ENGINEERS - 2709 MCGRAW DRIVE BLOOMINGTON, ILLINOIS 61704 (309) 663-8435 / (309) 663-1571 FAX