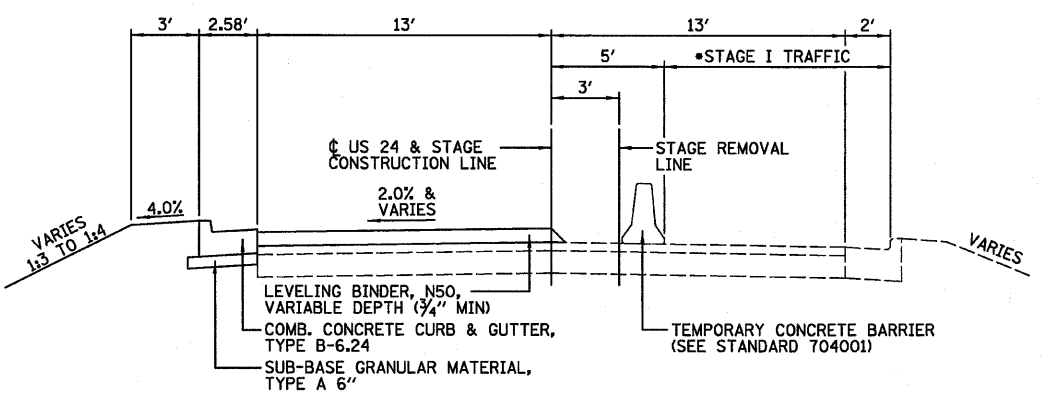
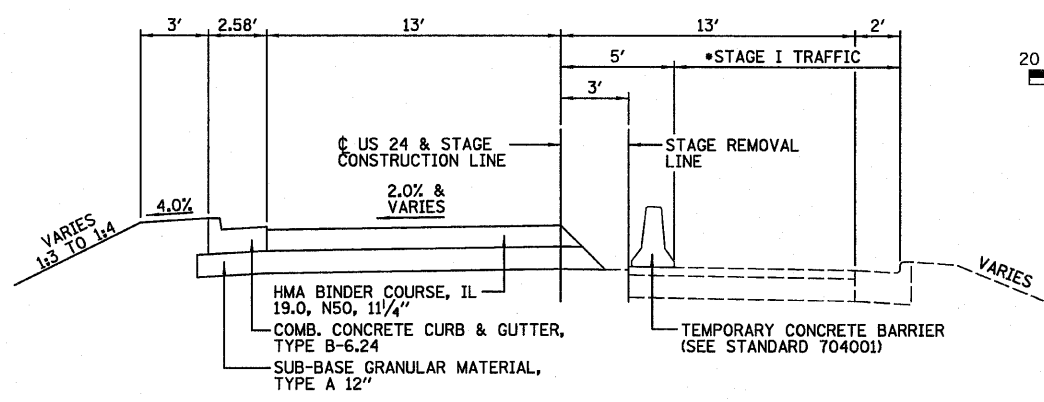


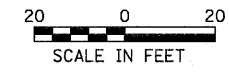
NOTE:
HMA SURFACE COURSE TO BE CONSTRUCTED AFTER STAGE II WORK IS COMPLETED USING TRAFFIC CONTROL AND PROTECTION STANDARD 701501-05



STAGE I ROADWAY OVERLAY TYPICAL SECTION - LOOKING EAST
*STAGE I TRAFFIC WIDTH IS 10.00' AND VARIES.



STAGE I FULL DEPTH ROADWAY TYPICAL SECTION - LOOKING EAST
*STAGE I TRAFFIC WIDTH IS 10.00' AND VARIES.



- NOTES:**
- SEE FOLLOWING SHEET FOR STAGE I NOTES.
 - FOR DETAILS NOT SHOWN SEE HIGHWAY STANDARD 701321

LEGEND				
	TEMPORARY CONCRETE BARRIER			
	TRAFFIC SIGNAL WITH SIGNAL DIRECTION ON BACK PLATE & MICROWAVE DETECTOR			
	MAINLINE TRAFFIC			
	PAVEMENT REMOVAL			
	STONE RIPRAP, CLASS A4			
	IMPACT ATTENUATORS			
	DRUM WITH STEADY BURNING LIGHT			

FILE NAME =	USER NAME = #USER#	DESIGNED - JML	REVISED -	STATE OF ILLINOIS DEPARTMENT OF TRANSPORTATION	STAGE I CONSTRUCTION	F.A.P. RTE.	SECTION	COUNTY	TOTAL SHEETS	SHEET NO.	
#FILE#		DRAWN - JJO	REVISED -			317	(25)BR-2	LIVINGSTON	58	18	
	PLOT SCALE = #SCALE#	CHECKED - MSW	REVISED -			SCALE: SHEET NO. OF SHEETS STA. TO STA.		CONTRACT NO. 68823			
	PLOT DATE = #DATE#	DATE - 08/13/10	REVISED -			FED. ROAD DIST. NO. ILLINOIS FED. AID PROJECT					