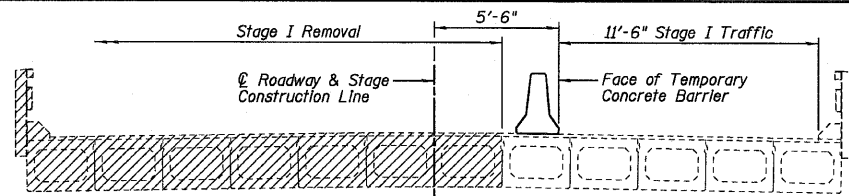
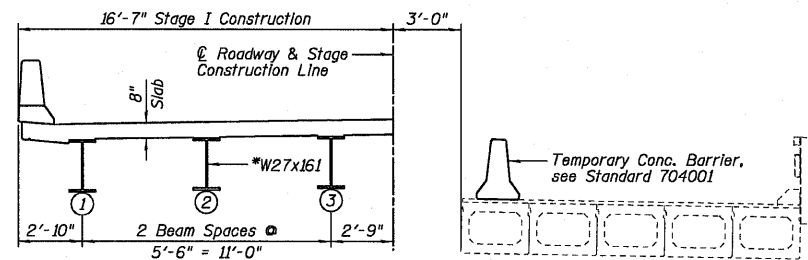


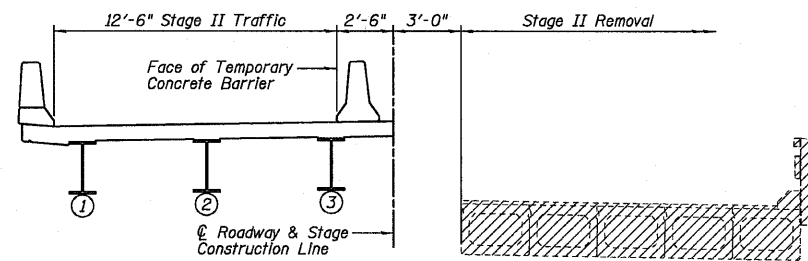
STATE OF ILLINOIS
DEPARTMENT OF TRANSPORTATION



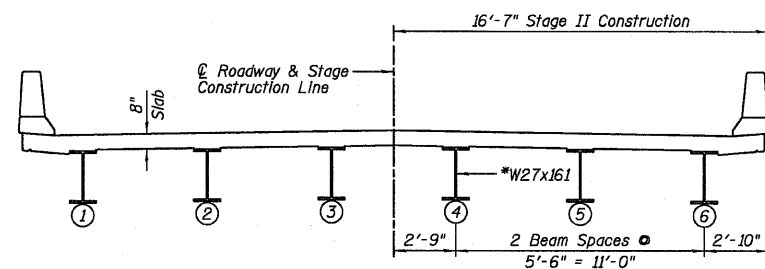
STAGE I REMOVAL
(Looking East • \odot of Bridge)



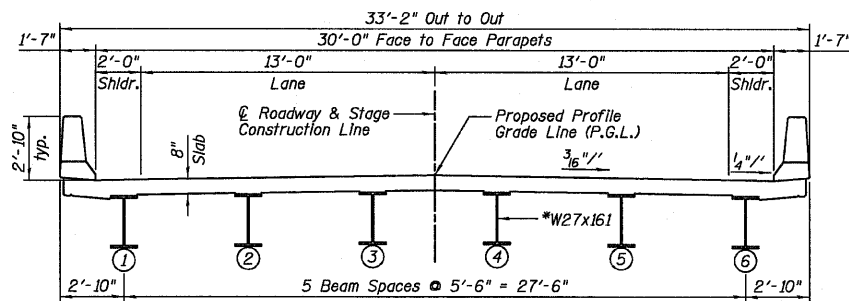
STAGE I CONSTRUCTION
(Looking East • \odot of Bridge)



STAGE II REMOVAL
(Looking East • \odot of Bridge)



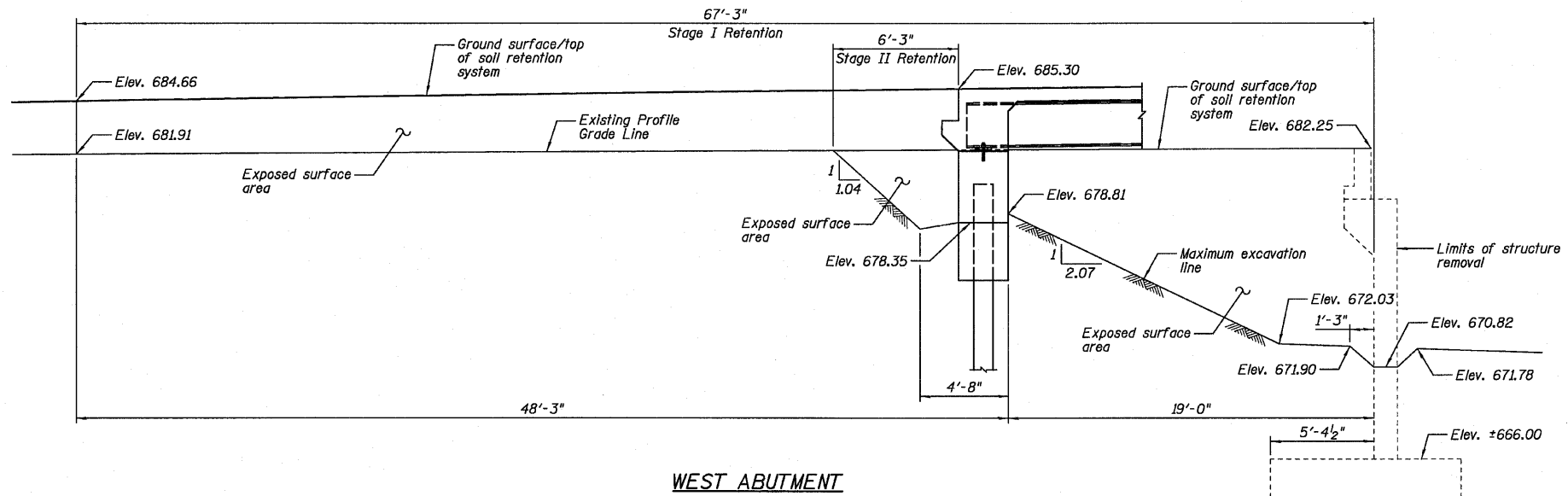
STAGE II CONSTRUCTION
(Looking East • \odot of Bridge)



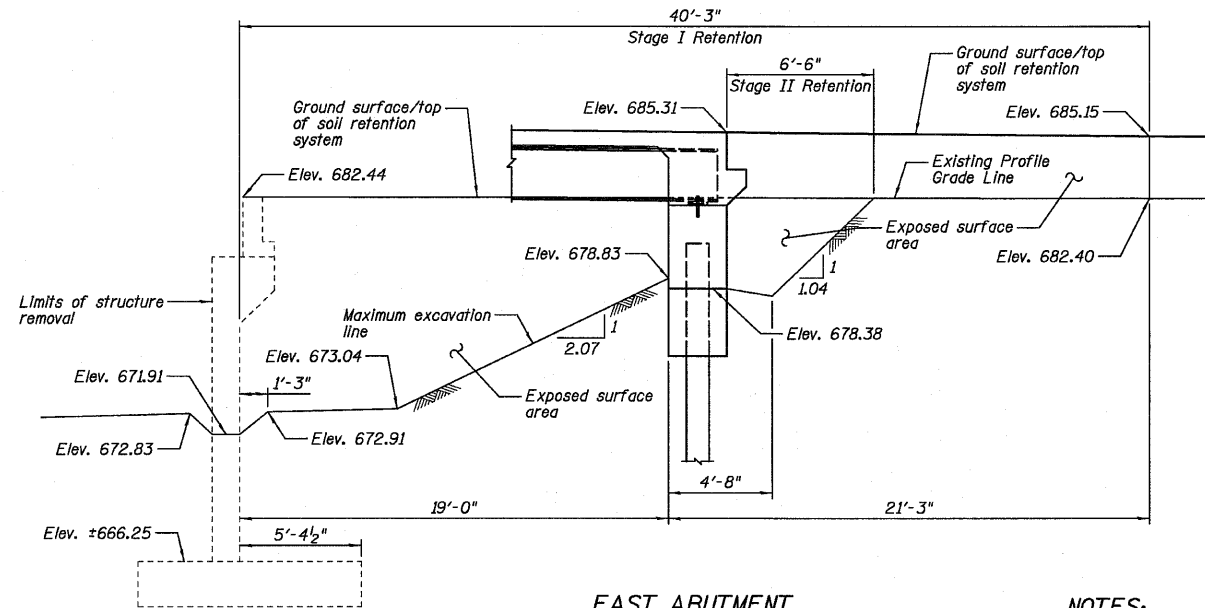
CROSS SECTION
(Looking East • \odot of Bridge)

DESIGNED	SDH
CHECKED	JML
DRAWN	DJM
CHECKED	MSW

DATE 08/13/10



WEST ABUTMENT



EAST ABUTMENT

TEMPORARY SOIL RETENTION SYSTEM

NOTES:

- 1.) A cantilever sheet piling design does not appear feasible and additional members or other retention systems may be necessary. The Contractor shall submit a temporary soil retention system design including plan details and calculations for review and acceptance by the Engineer.
- 2.) All dimensions are along roadway unless otherwise noted.

BILL OF MATERIAL

Item	Unit	Total
Temporary Soil Retention System	Sq. Ft.	498

NOTES:

- 1.) *Composite in positive moment region only.
- 2.) Hatched area indicates Removal of Existing PPC Deck Beam Superstructure. Removal of the existing bituminous wearing surface shall be included with Removal of Existing Structures.
- 3.) See Sheet B4 for Temporary Concrete Barrier (Standard 704001). See roadway plans for quantity.

Farnsworth GROUP, INC.
2709 McGraw Drive
Bloomington, Illinois 61704
309/663-8435, 309/663-1571 fax

SHEET NO. B3
26 SHEETS

**STAGE CONSTRUCTION
STRUCTURE NO. 053-0188**

F.A.P. RTE.	SECTION	COUNTY	TOTAL SHEETS	SHEET NO.
317	(25)BR-2	LIVINGSTON	58	26
CONTRACT NO. 66823				
FED. ROAD DIST. NO.	ILLINOIS	FED. AID PROJECT		