

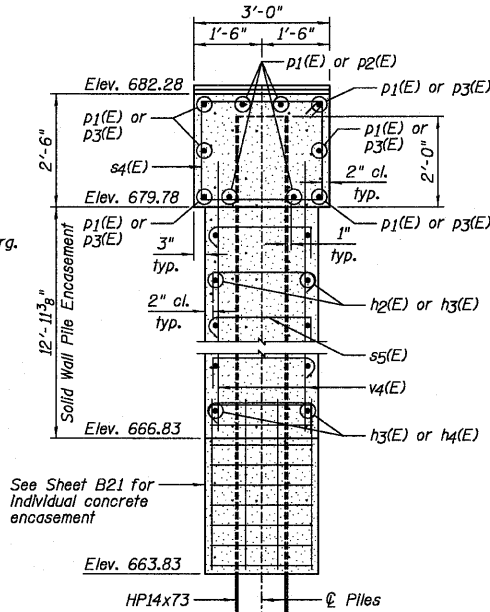
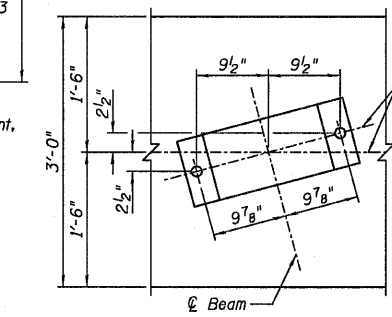
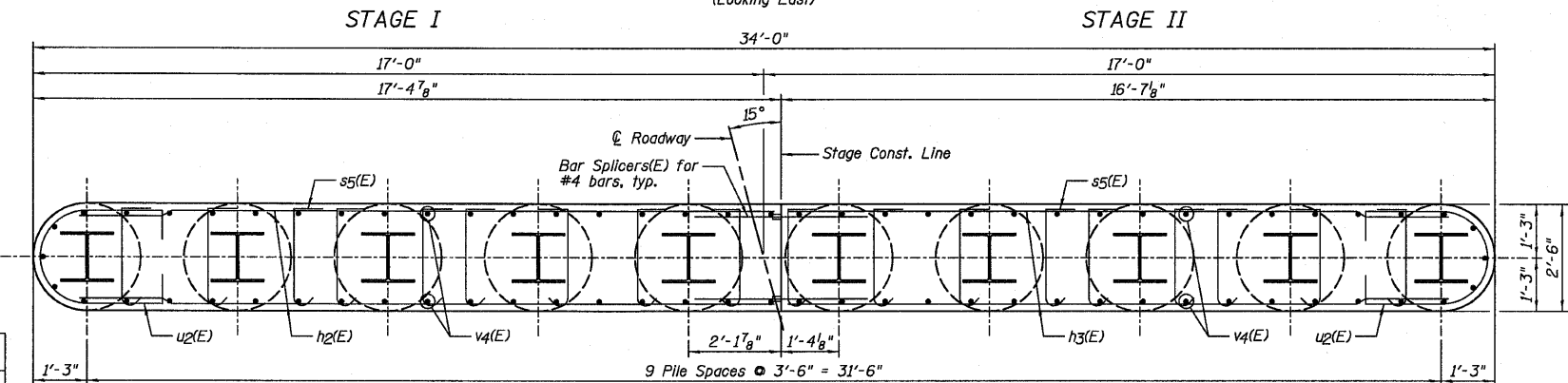
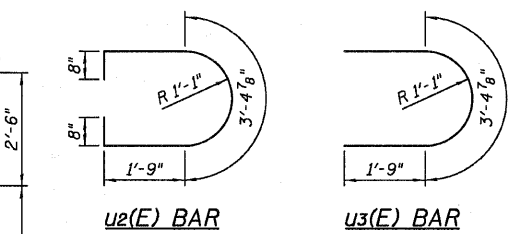
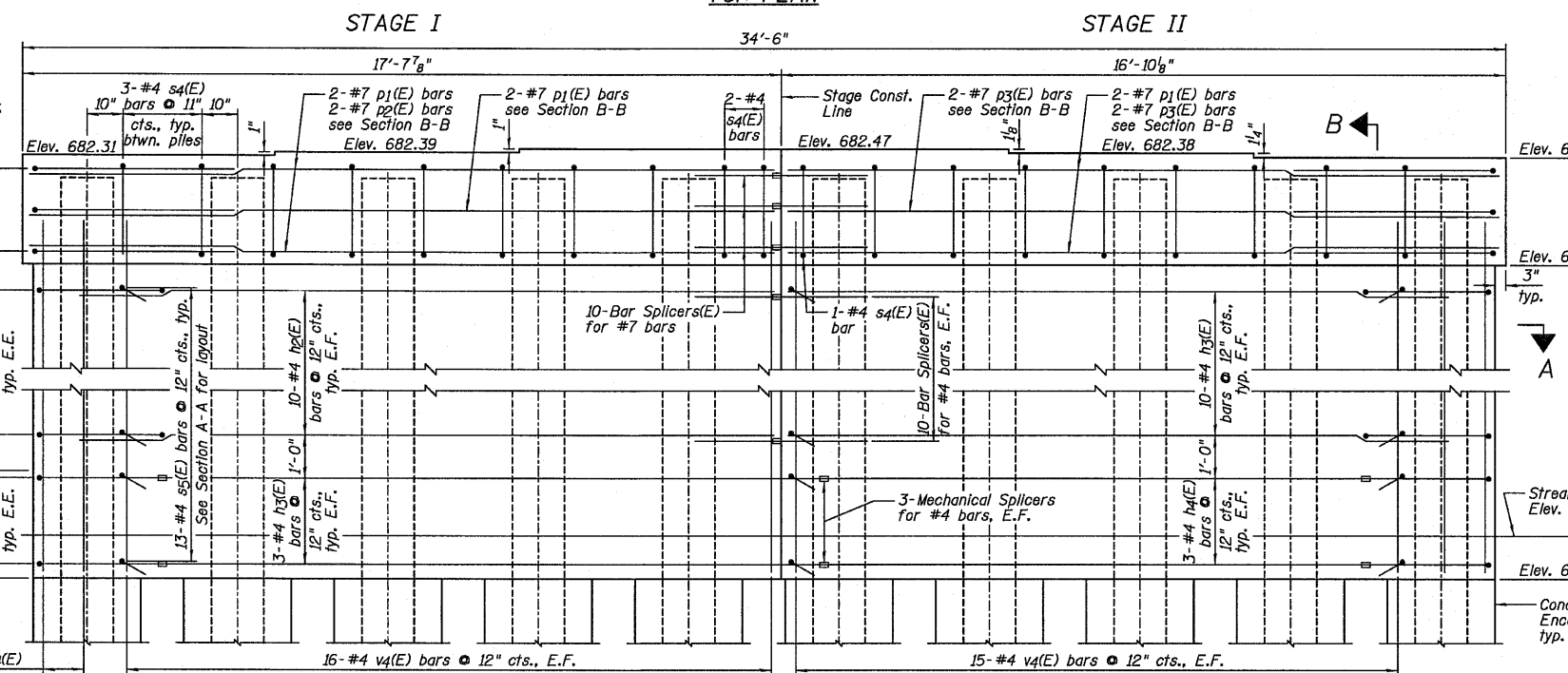
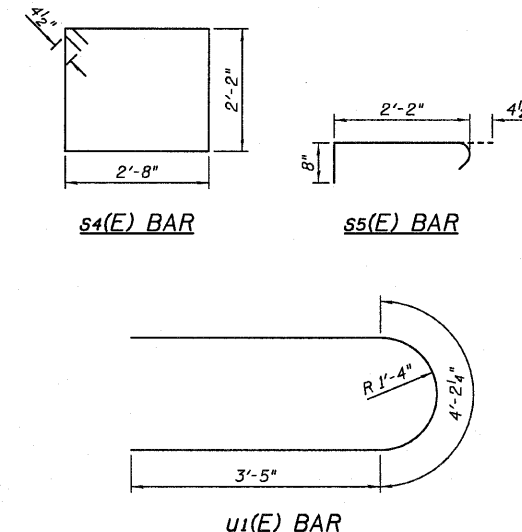
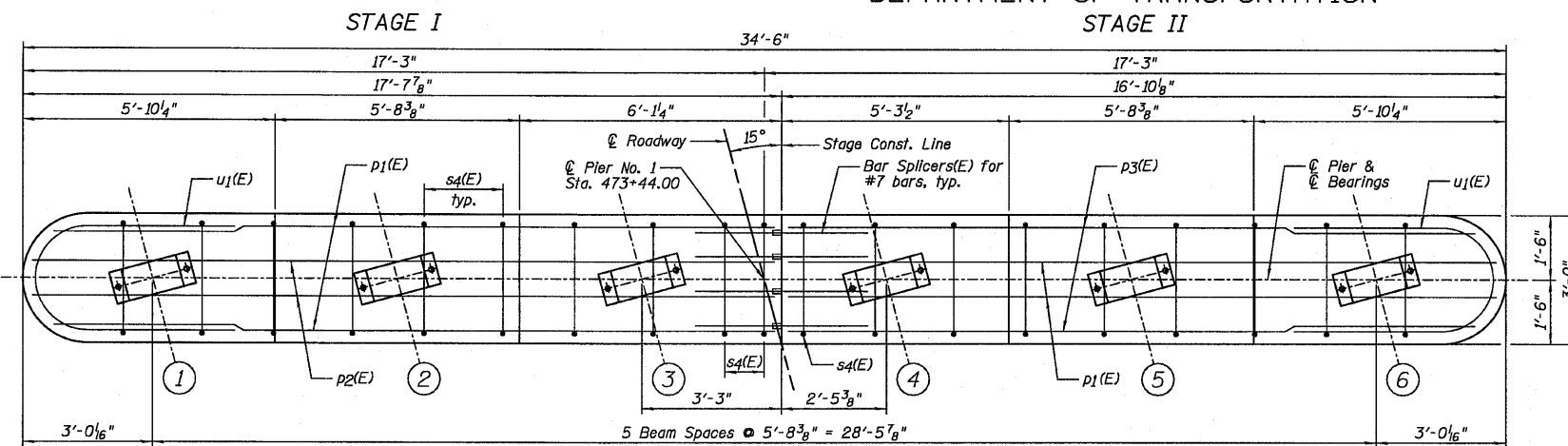
STATE OF ILLINOIS  
DEPARTMENT OF TRANSPORTATION

PIER NO. 1  
BILL OF MATERIAL

Bar	No.	Size	Length	Shape
h2(E)	20	#4	16'-3"	—
h3(E)	26	#4	15'-5"	—
h4(E)	6	#4	12'-7"	—
p1(E)	10	#7	16'-4"	—
p2(E)	4	#7	17'-3"	—
p3(E)	6	#7	15'-6"	—
s4(E)	27	#4	10'-5"	□
s5(E)	234	#4	3'-3"	—
u1(E)	6	#6	11'-0"	C
u2(E)	18	#4	8'-3"	C
u3(E)	6	#4	6'-11"	C
v4(E)	72	#4	13'-9"	—
Item	Unit	Quantity		
Structure Excavation	Cu. Yd.	11		
Concrete Structures	Cu. Yd.	49.9		
Concrete Encasement	Cu. Yd.	5.5		
Reinforcement Bars, Epoxy Coated	Pound	2,790		
Furnishing Steel Piles HP14x73	Foot	420		
Driving Piles	Foot	420		
Bar Splicers	Each	30		
Underwater Structure Excavation Protection - Location 1	Each	1		
Mechanical Splicers	Each	18		

PILE DATA:

Pile Type and Size	Steel - HP14x73
Nominal Required Bearing	415 kips
Factored Resistance Available	191 kips
Estimated Pile Length	42 Feet
Number of Production Piles	10
Number of Test Piles	0



- NOTES:
- 1.) Pour steps monolithically with cap.
  - 2.) If a portion of the pier wall or concrete encasement is under water, reinforcement may be placed under water into forms. Concrete shall be tremied according to Article 503.08 of the Standard Specifications to an elevation 1'-0" above the water line at the time of construction.
  - 3.) E.F. denotes Each Face and E.E. denotes Each End.
  - 4.) See Sheet B22 for Bar Splicer Details.

PIER NO. 1  
STRUCTURE NO. 053-0188

DESIGNED	SDH
CHECKED	JML
DRAWN	DJM
CHECKED	MSW
DATE	08/13/10

<b>Farnsworth GROUP, INC.</b> 2709 McGraw Drive Bloomington, Illinois 61704 309/663-8435, 309/663-1571 fax	SHEET NO. B19	F.A.P. RTE. 317	SECTION (25)BR-2	COUNTY LIVINGSTON	TOTAL SHEETS 58	SHEET NO. 42
	26 SHEETS	CONTRACT NO. 66823				
		FED. ROAD DIST. NO.	ILLINOIS	FED. AID PROJECT		