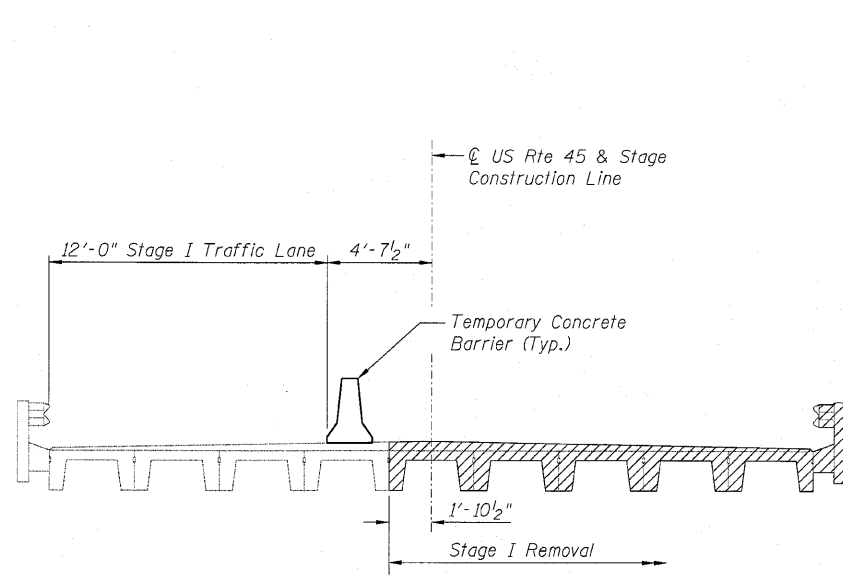
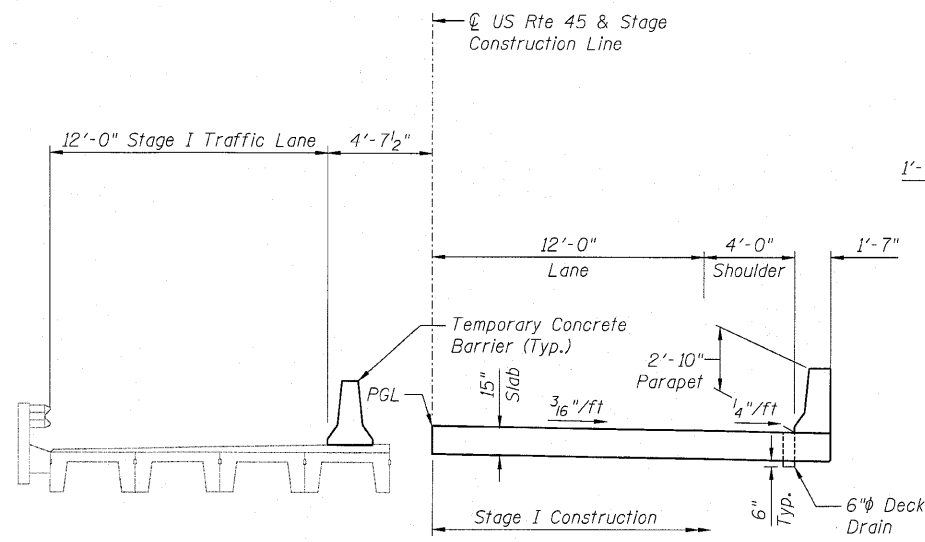


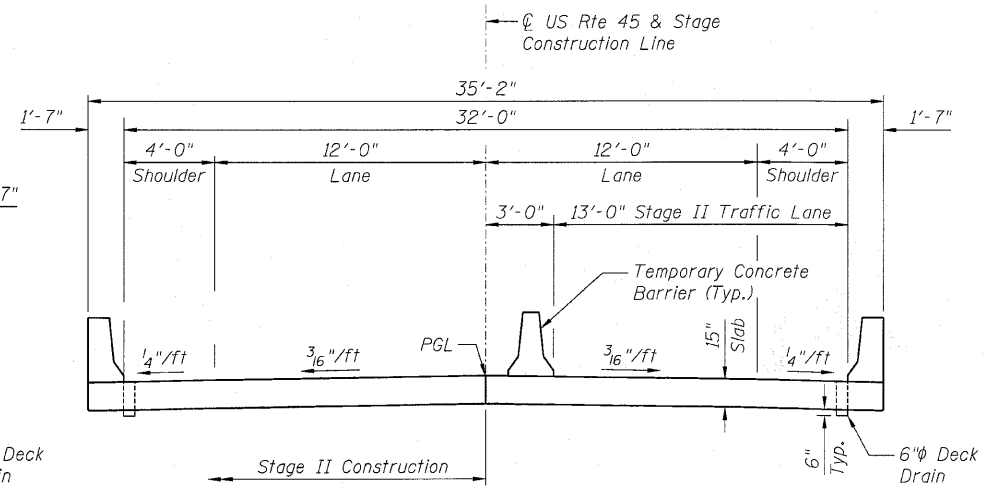
STATE OF ILLINOIS  
DEPARTMENT OF TRANSPORTATION



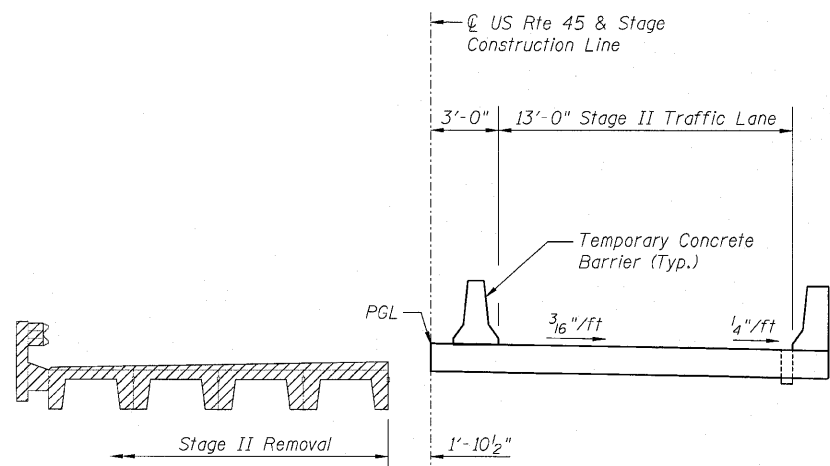
**STAGE I REMOVAL**  
(Looking West)



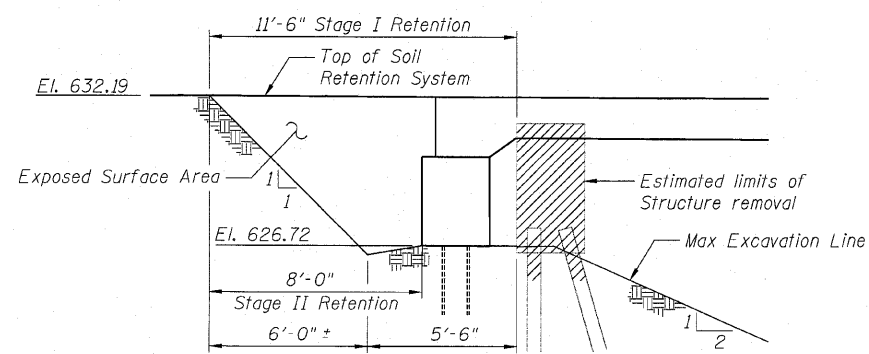
**STAGE I CONSTRUCTION**  
(Looking West)



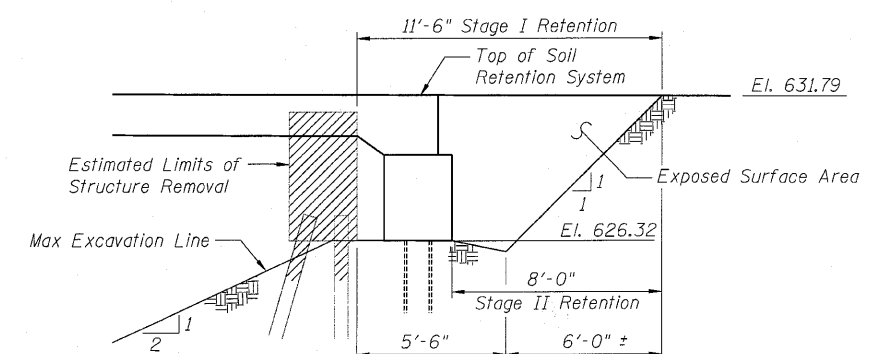
**STAGE II CONSTRUCTION**  
(Looking West)



**STAGE II REMOVAL**  
(Looking West)



**WEST ABUTMENT**



**EAST ABUTMENT**

**ELEVATION TEMPORARY SOIL RETENTION SYSTEM**

A cantilevered sheet piling design does not appear feasible and additional members or other retention systems may be necessary. The Contractor shall submit a temporary soil retention system design including plan details and calculations for review and acceptance by the Engineer.

Notes:

Hatched areas indicate removal of existing structures.

For quantity of temporary concrete barrier, see Roadway Plans.

**STAGE CONSTRUCTION DETAILS**  
**STRUCTURE NO. 038-0221**

**ZROKA**  
engineering  
Zroka Engineering, P.C.  
4216 North Hermitage  
Chicago, IL 60613

Date: 7-28-10 Drawn By: AJP Checked By: DZ

SHEET NO. 3 OF 20 SHEETS	F.A.P. RTE.	SECTION	COUNTY	TOTAL SHEETS	SHEET NO.
	681	118BR	IROQUOIS	42	12
			CONTRACT NO. 66861		
FED. ROAD DIST. NO. _ ILLINOIS FED. AID PROJECT					

7/29/2010 6:30:47 PM C:\Drawings\5500-10\US45\Final\Structural\Plans\S3\_Stage Construction Details.dwg