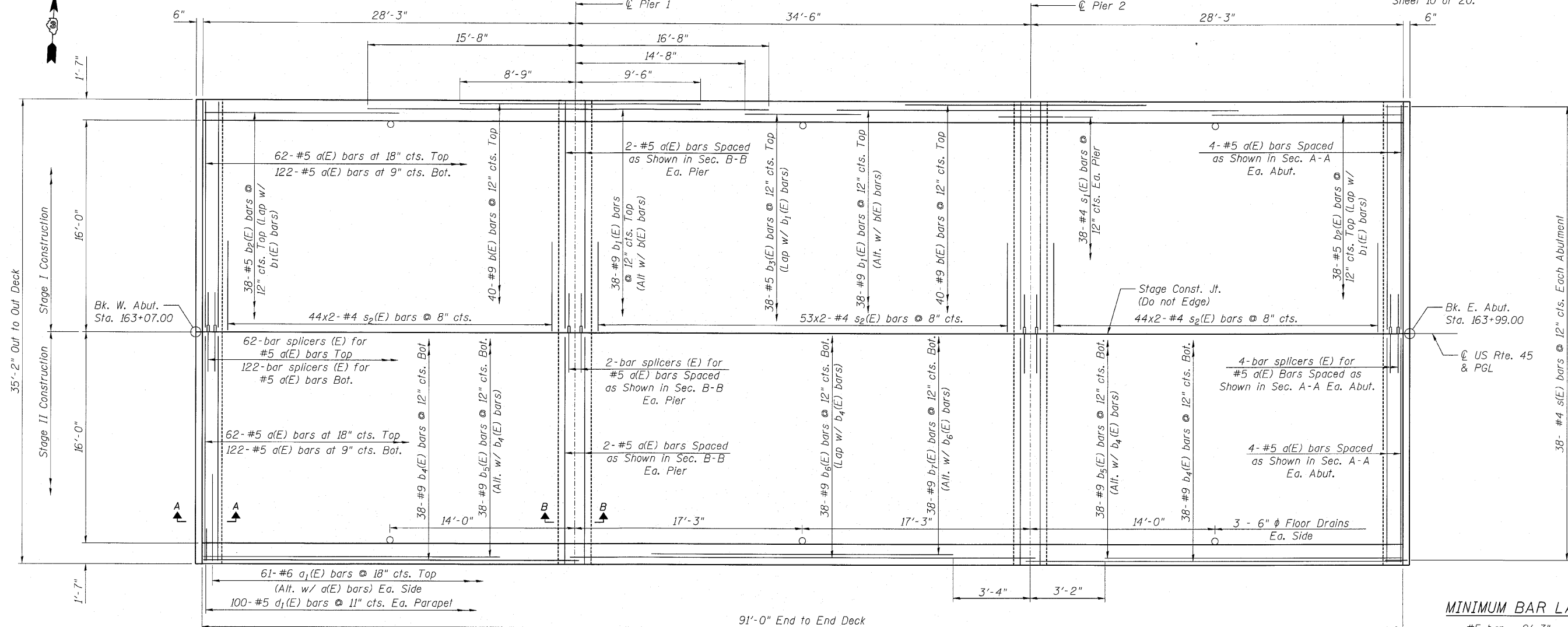


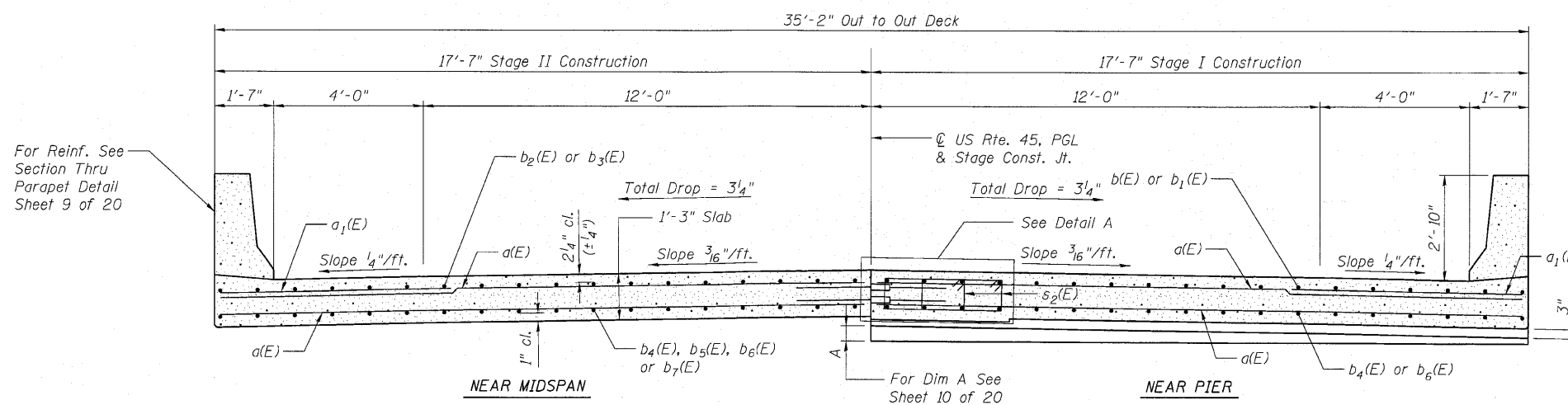
STATE OF ILLINOIS
DEPARTMENT OF TRANSPORTATION

Notes:
For Section A-A and Section B-B See
Sheet 10 of 20.

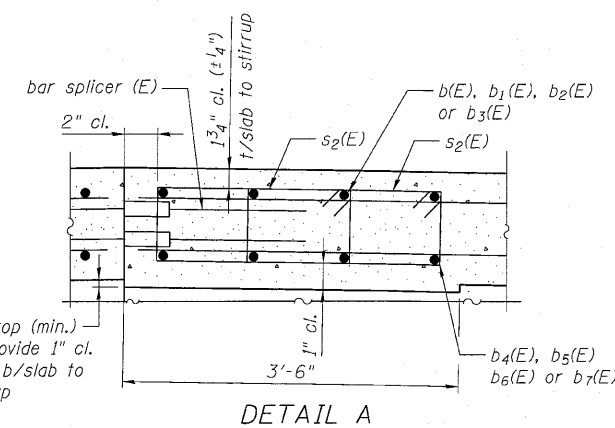


DECK PLAN

MINIMUM BAR LAP
#5 bar = 2'-3"



CROSS SECTION
(Looking West)



DETAIL A

SUPERSTRUCTURE
STRUCTURE NO. 038-0221

SHEET NO. 8 OF 20 SHEETS	F.A.P. RTE.	SECTION	COUNTY	TOTAL SHEETS	SHEET NO.
	681	118BR	IROQUOIS	42	17
FED. ROAD DIST. NO. _			ILLINOIS FED. AID PROJECT		
CONTRACT NO. 66861					

7/29/2010 6:32:28 PM C:\Drawings\5500-10US45\FinalStructuralPlans\SB_Superstructure.dgn



Zroka Engineering, P.C.
4216 North Hermitage
Chicago, IL 60613

Date: 7-28-10 Drawn By: FJS Checked By: DZ