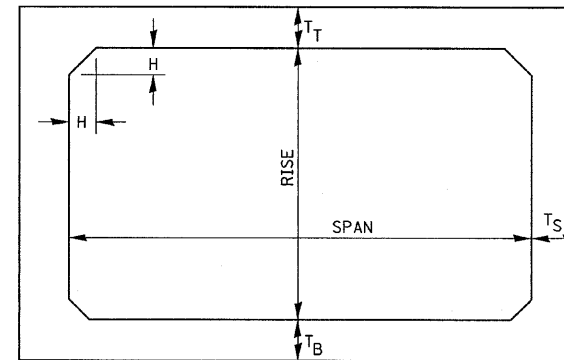


**ELEVATION**



NOTE: THE HAUNCH DIMENSION H, IS EQUAL TO THE WALL THICKNESS T<sub>S</sub>.

**TYPICAL BOX SECTION**

SPAN, FEET	T <sub>T</sub> , INCHES		T <sub>B</sub> , INCHES		T <sub>S</sub> , INCHES	
	M 259	M 273	M 259	M 273	M 259	M 273
3	4	7	4	6	4	4
4	5	7 1/2	5	6	5	5
5	6	8	6	7	6	6
6	7	8	7	7	7	7
7	8	8	8	8	8	8
8	8	8	8	8	8	8
9	9	9	9	9	9	9
10	10	10	10	10	10	10
11	11	11	11	11	11	11
12	12	12	12	12	12	12

**TYPICAL THICKNESSES**

GENERAL NOTES:

MINIMUM COVER FOR BOX  
CULVERTS SHALL BE 6".

**540-15**

FILE NAME = 0366870-SHT-DETAILS.DGN	USER NAME = ---	DESIGNED - JKC	REVISED - ---	<b>STATE OF ILLINOIS DEPARTMENT OF TRANSPORTATION</b>	<b>DETAILS PRECAST CONCRETE BOX SECTION</b>			F.A.P. RTE. 681	SECTION (115)I	COUNTY LIVINGSTON	TOTAL SHEETS 20	SHEET NO. 15
		DRAWN - NV	REVISED - ---		SCALE: NONE	SHEET NO. ___ OF ___ SHEETS	STA. _____ TO STA. _____	CONTRACT NO. 66870				
		CHECKED - JKC	REVISED - ---		ILLINOIS FED. AID PROJECT							
		PLOT DATE = 01/10	REVISED - ---									