

STATE OF ILLINOIS
DEPARTMENT OF TRANSPORTATION

DIVISION OF HIGHWAYS
**PROPOSED
HIGHWAY PLANS**

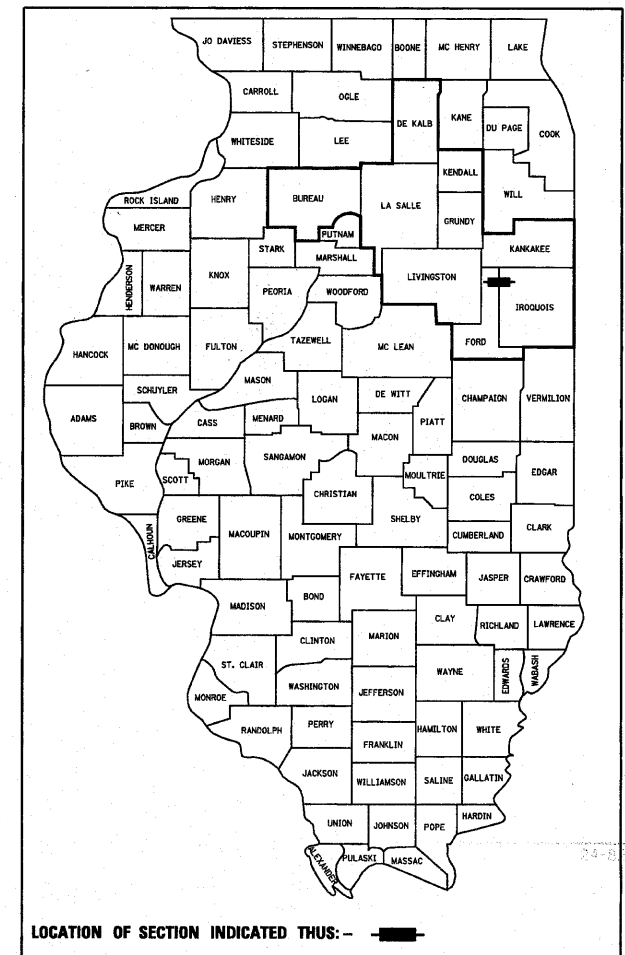
F.A.P. ROUTE 681 (IL ROUTE 116)
SECTION 116 BR / [116 BR, (BR-2)BR, I & BR-3]
PROJECT ACBRF-ACF-0681(042)
STRUCTURE REPLACEMENTS
FORD / IROQUOIS COUNTIES

C-93-028-09

F.A.P. RTE.	SECTION	COUNTY	TOTAL SHEETS	SHEET NO.
681	*	FORD/IROQUOIS	146	1

* 116 BR/116 BR, (BR-2)BR, I & BR-3] 146 + 4 = 150

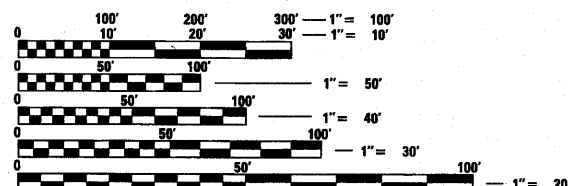
D-93-016-09 P-93-013-08 P-93-029-08 P-93-044-07
P-93-043-07 P-93-031-06



INDEX OF SHEETS

- 1 COVER SHEET
- 2 HIGHWAY STANDARDS, GENERAL NOTES AND COMMITMENTS
- 3-6 SUMMARY OF QUANTITIES
- 7-13 TYPICAL SECTIONS
- 14-20 SCHEDULE OF QUANTITIES
- 21-26 ALIGNMENT, SURVEY TIES AND BENCHMARKS
- 27-37 PLAN & PROFILE SHEETS
- 38-39 DETOUR PLANS
- 40-46 EROSION CONTROL PLANS
- 46A-46D ROW PLANS
- 47 4'x3' PRECAST CONCRETE BOX CULVERT
- 48-55 S.N. 027-2018 (PR.) / 027-0043 (EX.)
- 56-67 S.N. 027-2553 (PR.) / 027-2528 (EX.)
- 68-85 S.N. 027-0100 (PR.) / 027-0045 (EX.)
- 86-103 S.N. 027-0098 (PR.) / 027-0046 (EX.)
- 104-113 S.N. 038-2549 (PR.) / 038-0173 (EX.)
- 114-122 DETAILS
- 123-146 CROSS SECTIONS

FOR LIST OF STANDARDS, SEE SHEET NO. 2



FULL SIZE PLANS HAVE BEEN PREPARED USING STANDARD ENGINEERING SCALES. REDUCED SIZED PLANS WILL NOT CONFORM TO STANDARD SCALES. IN MAKING MEASUREMENTS ON REDUCED PLANS, THE ABOVE SCALES MAY BE USED.

J.U.L.I.E.
JOINT UTILITY LOCATION INFORMATION FOR EXCAVATION
1-800-892-0123
OR 811

DISTRICT 3 NO. (815) 434-6131
PROJECT ENGINEER: JOE KANNEL
UNIT CHIEF: MICHELE LINDEMANN
CONTRACT NO. 66880

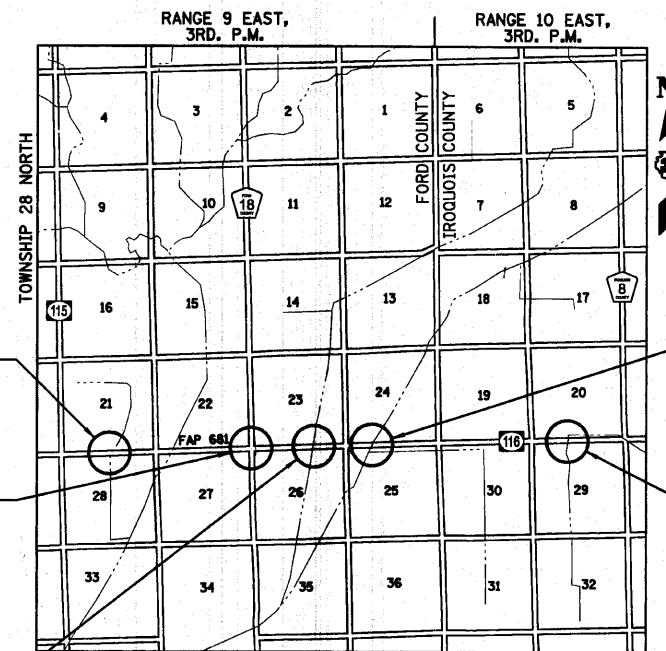
S.N. 027-2018 (PR.) / 027-0043 (EX.)
STATION 26+64.00
STRUCTURE REPLACEMENT OVER
UNNAMED DRAINAGE DITCH
(IMPROVEMENT)
STA. 21+00.00 TO STA. 30+50.00

S.N. 027-2553 (PR.) / 027-2528 (EX.)
STATION 106+78.61
STRUCTURE REPLACEMENT OVER
UNNAMED DRAINAGE DITCH
(IMPROVEMENT)
STA. 106+00.00 TO STA. 109+00.00

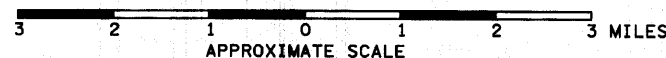
S.N. 027-0100 (PR.) / 027-0045 (EX.)
STATION 141+45.17
STRUCTURE REPLACEMENT OVER
UNNAMED DRAINAGE DITCH
(IMPROVEMENT)
STA. 137+10.00 TO STA. 146+90.00

S.N. 027-0098 (PR.) / 027-0046 (EX.)
STATION 174+61.04
STRUCTURE REPLACEMENT OVER
UNNAMED DRAINAGE DITCH
(IMPROVEMENT)
STA. 171+50.00 TO STA. 177+50.00

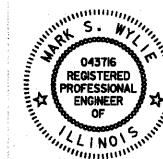
S.N. 038-2549 (PR.) / 038-0173 (EX.)
STATION 284+00.00
STRUCTURE REPLACEMENT OVER
UNNAMED DRAINAGE DITCH
(IMPROVEMENT)
STA. 282+80.00 TO STA. 285+20.00



LOCATION MAP



GROSS LENGTH = 3170 FT. = 0.60 MILE
NET LENGTH = 3170 FT. = 0.60 MILE



Mark S. Wylie Date 8/14/10
MARK S. WYLIE
REGISTERED PROFESSIONAL ENGINEER
NO. 062-043716
EXPIRATION 11/30/11

FUNCTIONAL CLASSIFICATION
RURAL MINOR ARTERIAL
2011 ADT = 1050
P.V. = 81.1% S.U. = 7.8% M.U. = 11.1%

STATE OF ILLINOIS
DEPARTMENT OF TRANSPORTATION
DIVISION OF HIGHWAYS
SUBMITTED Aug 10 2010
George Rogers
DEPUTY DIRECTOR OF HIGHWAYS, REGION ENGINEER
October 1 2010
Scott E. Stapp
ENGINEER OF DESIGN AND ENVIRONMENT
October 1 2010
Christine M. Reed
DIRECTOR OF HIGHWAYS, CHIEF ENGINEER

PRINTED BY THE AUTHORITY
OF THE STATE OF ILLINOIS