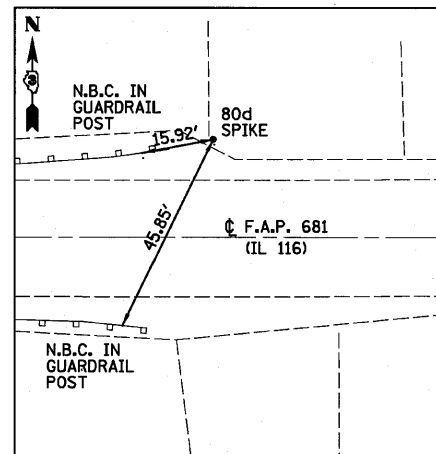
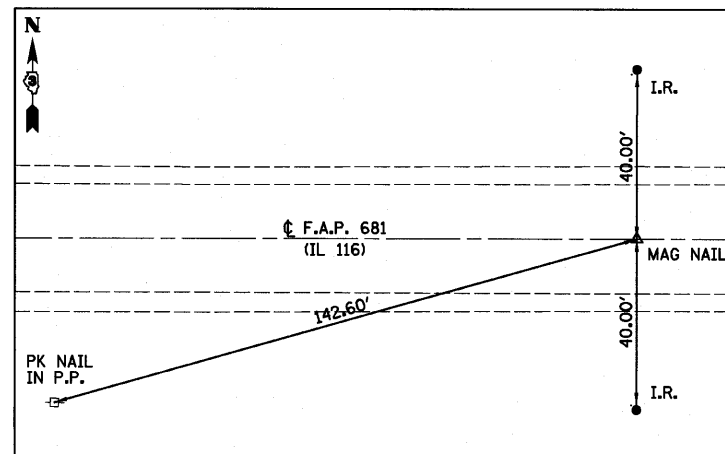


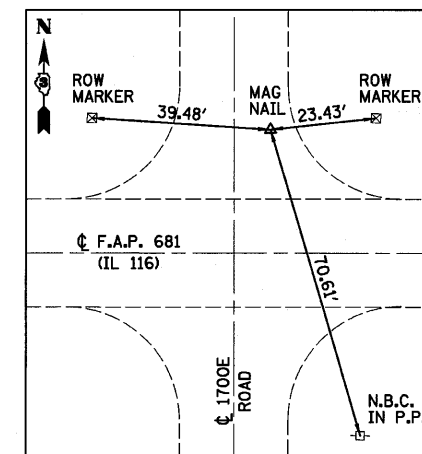
IL 116
 STA 137+00.00
 N = 1534565.415
 E = 1033245.310



CONTROL POINT
 STA 143+00.66, 21.83' LT
 N = 1534602.363
 E = 1033845.285
 ELEV = 658.896



IL 116
 STA 147+00.00
 N = 1534590.550
 E = 1034244.975



CONTROL POINT
 STA 159+35.67, 27.46' LT
 N = 1534650.233
 E = 1035479.413
 ELEV = 657.133

BENCHMARK
 STA 141+90, 17' LT
 CHISELED "□" ON
 N.E. WINGWALL
 ELEV=659.76

BENCHMARK
 STA 142+10, 39' RT
 RAILROAD SPIKE IN
 POWER POLE SOUTH
 SIDE OF IL RTE 116
 ELEV=657.59

FILE NAME =	USER NAME = #USER#	DESIGNED - JML	REVISED -
#FILE#		DRAWN - DJM	REVISED -
	PLOT SCALE = #SCALE#	CHECKED - MSW	REVISED -
	PLOT DATE = #DATE#	DATE - 08/04/10	REVISED -

STATE OF ILLINOIS
 DEPARTMENT OF TRANSPORTATION

ALIGNMENT, SURVEY TIES AND BENCHMARKS

F.A.P. RTE. 681	SECTION *	COUNTY FORD/IROQUOIS	TOTAL SHEETS 146	SHEET NO. 24
SN 027-0100		CONTRACT NO. 66880		
FED. ROAD DIST. NO. ILLINOIS FED. AID PROJECT				