

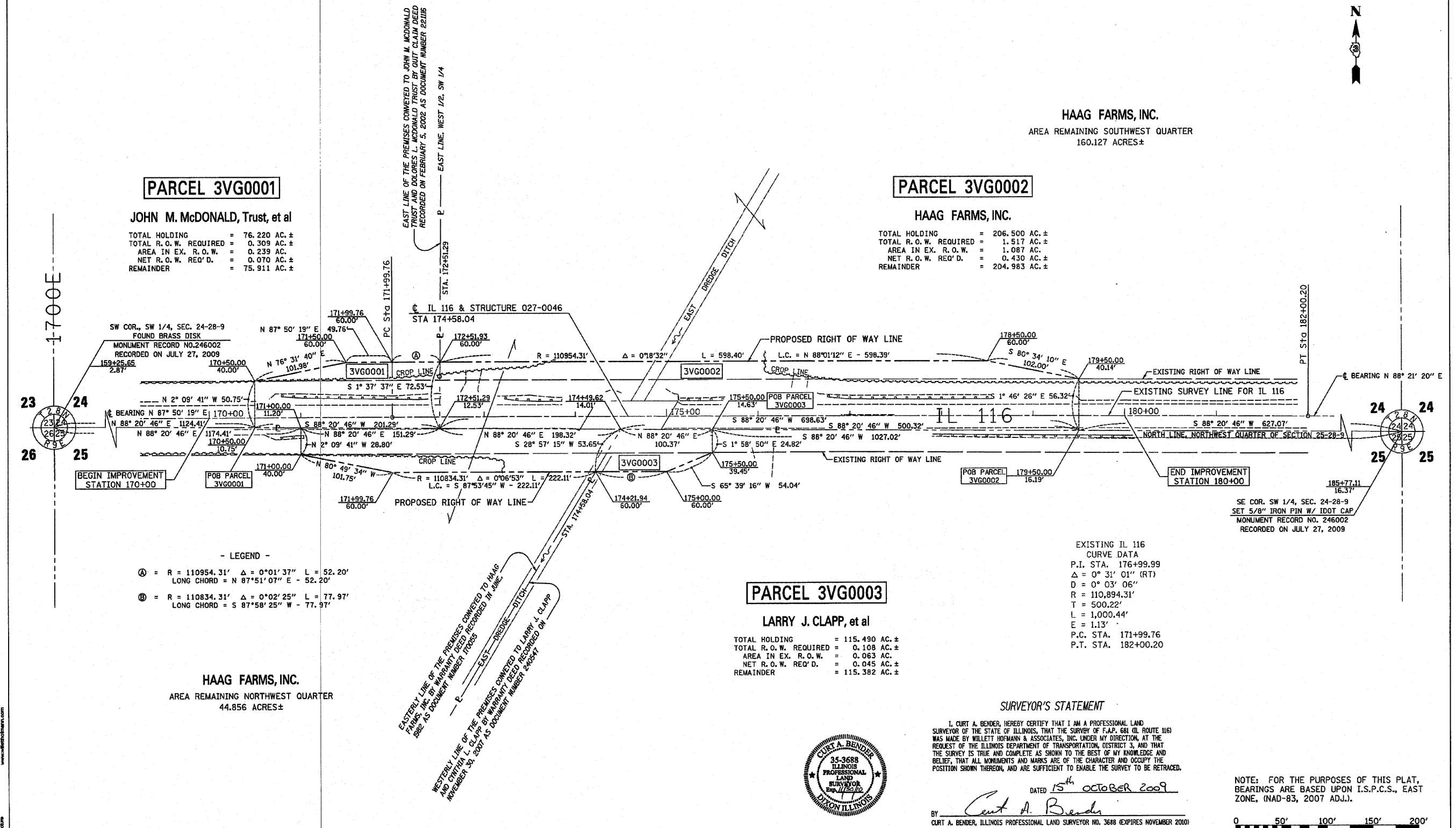
SW 1/4, SEC. 24, T. 28 N., R. 9 E. 3RD P.M.



HAAG FARMS, INC.
 AREA REMAINING SOUTHWEST QUARTER
 160.127 ACRES±

PARCEL 3VG0001
JOHN M. McDONALD, Trust, et al
 TOTAL HOLDING = 76.220 AC.±
 TOTAL R.O.W. REQUIRED = 0.309 AC.±
 AREA IN EX. R.O.W. = 0.239 AC.
 NET R.O.W. REQ'D. = 0.070 AC.±
 REMAINDER = 75.911 AC.±

PARCEL 3VG0002
HAAG FARMS, INC.
 TOTAL HOLDING = 206.500 AC.±
 TOTAL R.O.W. REQUIRED = 1.517 AC.±
 AREA IN EX. R.O.W. = 1.087 AC.
 NET R.O.W. REQ'D. = 0.430 AC.±
 REMAINDER = 204.983 AC.±



- LEGEND -
 (A) = R = 110954.31' Δ = 0°01'37" L = 52.20'
 LONG CHORD = N 87°51'07" E - 52.20'
 (B) = R = 110834.31' Δ = 0°02'25" L = 77.97'
 LONG CHORD = S 87°58'25" W - 77.97'

HAAG FARMS, INC.
 AREA REMAINING NORTHWEST QUARTER
 44.856 ACRES±

PARCEL 3VG0003
LARRY J. CLAPP, et al
 TOTAL HOLDING = 115.490 AC.±
 TOTAL R.O.W. REQUIRED = 0.108 AC.±
 AREA IN EX. R.O.W. = 0.063 AC.
 NET R.O.W. REQ'D. = 0.045 AC.±
 REMAINDER = 115.382 AC.±

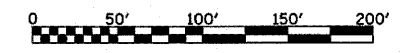
EXISTING IL 116
 CURVE DATA
 P.I. STA. 176+99.99
 Δ = 0° 31' 01" (RT)
 D = 0° 03' 06"
 R = 110,894.31'
 T = 500.22'
 L = 1,000.44'
 E = 1.13'
 P.C. STA. 171+99.76
 P.T. STA. 182+00.20

SURVEYOR'S STATEMENT

I, CURT A. BENDER, HEREBY CERTIFY THAT I AM A PROFESSIONAL LAND SURVEYOR OF THE STATE OF ILLINOIS, THAT THE SURVEY OF F.A.P. 681 (IL ROUTE 116) WAS MADE BY WILLET HOFMANN & ASSOCIATES, INC. UNDER MY DIRECTION, AT THE REQUEST OF THE ILLINOIS DEPARTMENT OF TRANSPORTATION, DISTRICT 3, AND THAT THE SURVEY IS TRUE AND COMPLETE AS SHOWN TO THE BEST OF MY KNOWLEDGE AND BELIEF, THAT ALL MONUMENTS AND MARKS ARE OF THE CHARACTER AND OCCUPY THE POSITION SHOWN THEREON, AND ARE SUFFICIENT TO ENABLE THE SURVEY TO BE RETRACED.

DATED 15th OCTOBER 2009
 BY Curt A. Bender
 CURT A. BENDER, ILLINOIS PROFESSIONAL LAND SURVEYOR NO. 3688 (EXPIRES NOVEMBER 2010)
 WILLET, HOFMANN & ASSOCIATES, INC. - DESIGN FIRM NO. 184-000918

NOTE: FOR THE PURPOSES OF THIS PLAT, BEARINGS ARE BASED UPON I.S.P.C.S., EAST ZONE, (NAD-83, 2007 ADJ.).



NW 1/4, SEC. 25, T. 28 N., R. 9 E. 3RD P.M.

V:\1128208 IL RTE 116 D-3\116\PLANS.dgn modifications by c.a. drawn by s.f.

WILLET, HOFMANN & ASSOCIATES, INC.
 CONSULTING ENGINEERS
 100 East Second Street, Downers Grove, IL 60130
 Phone: 630.354.1001 Fax: 630.354.3588
 Email: info@wha.com Website: www.wha.com

FILE NAME	USER NAME = *USER*	DESIGNED -	REVISED -	STATE OF ILLINOIS DEPARTMENT OF TRANSPORTATION	RIGHT OF WAY PLANS		F.A. RTE.	SECTION	COUNTY	TOTAL SHEETS	SHEET NO.
FILE#		DRAWN -	REVISED -		PROJECT	JOB NO. R-93-002-09	681	116BR-3	FORD	196	446
		CHECKED -	REVISED -		SCALE: 1" = 50'	SHEET NO. 1 OF 1 SHEETS	STA. 170+00 TO STA. 180+00	CONTRACT NO. 66880			
PLOT SCALE = *SCALE*		DATE -	REVISED -				FED. ROAD DIST. NO.	ILLINOIS FED. AID PROJECT			
PLOT DATE = *DATE*											