

SEC. 22, 23, 26, 27, T. 28 N., R. 9 E., 3RD P.M.



PARCEL 3VP0002

JULIA J. HALPIN

TOTAL HOLDING = 160.000 AC. ±
 TOTAL R.O.W. REQUIRED = 0.301 AC. ±
 AREA IN EX. R.O.W. = 0.241 AC.
 NET R.O.W. REQ'D. = 0.060 AC. ±
 REMAINDER = 159.699 AC. ±

PARCEL 3VP0003

ESTATE OF WILLIAM W. HALPIN
 & JULIA J. HALPIN

TOTAL HOLDING = 160.000 AC. ±
 TOTAL R.O.W. REQUIRED = 0.548 AC. ±
 AREA IN EX. R.O.W. = 0.418 AC.
 NET R.O.W. REQ'D. = 0.130 AC. ±
 REMAINDER = 159.452 AC. ±

LEGEND

- ⊖ = N 1° 33' 11" W 43.12'
- ⊖ = N 77° 08' 14" E 50.99'
- ⊖ = N 88° 26' 49" E 45.00'
- ⊖ = N 76° 26' 08" E 48.05'
- ⊖ = N 9° 46' 53" E 91.61'
- ⊖ = N 88° 08' 57" E 23.79'
- ⊖ = S 88° 22' 27" W 31.97'
- ⊖ = N 9° 09' 45" W 70.66'
- ⊖ = N 64° 12' 11" W 65.30'
- ⊖ = S 88° 26' 49" W 35.00'
- ⊖ = N 80° 14' 35" W 50.99'
- ⊖ = N 1° 33' 11" W 36.88'
- ⊖ = S 1° 32' 46" E 37.19'
- ⊖ = S 77° 08' 38" W 101.98'
- ⊖ = S 88° 27' 14" W 120.00'
- ⊖ = S 68° 35' 55" W 38.28'
- ⊖ = S 29° 19' 29" W 61.70'
- ⊖ = S 88° 22' 27" W 28.02'
- ⊖ = N 88° 08' 57" E 42.21'
- ⊖ = S 80° 14' 11" E 50.99'
- ⊖ = S 1° 32' 46" E 42.81'
- ⊖ = 106+00.00 - 40.00'
- ⊖ = 106+10.57 - 40.00'
- ⊖ = 106+76.57 - 40.00'
- ⊖ = 106+00.00 - 40.00'
- ⊖ = 106+02.22 - 40.00'
- ⊖ = 106+62.22 - 40.00'

PARCEL 3VP0001

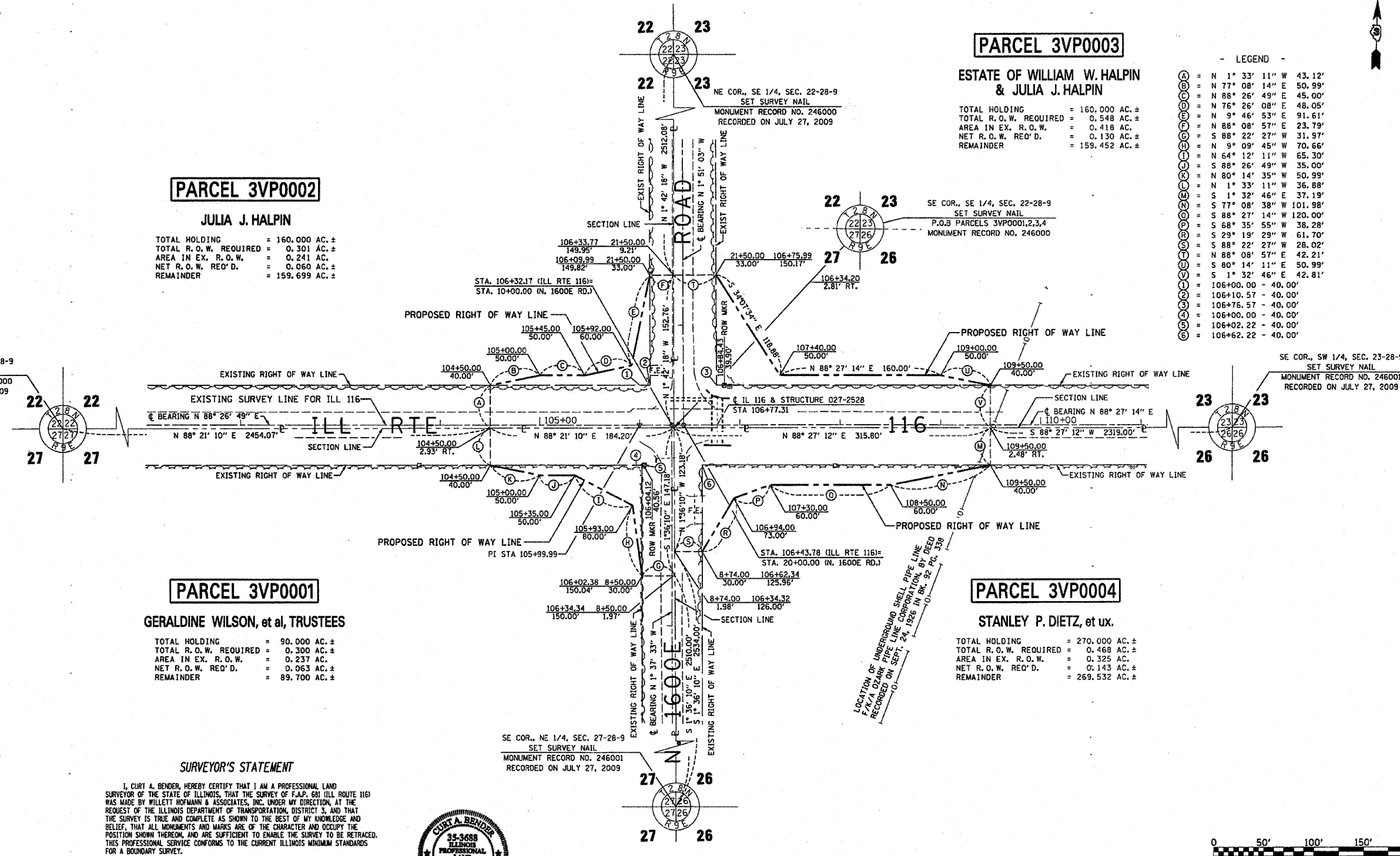
GERALDINE WILSON, et al, TRUSTEES

TOTAL HOLDING = 90.000 AC. ±
 TOTAL R.O.W. REQUIRED = 0.300 AC. ±
 AREA IN EX. R.O.W. = 0.237 AC.
 NET R.O.W. REQ'D. = 0.063 AC. ±
 REMAINDER = 89.700 AC. ±

PARCEL 3VP0004

STANLEY P. DIETZ, et ux.

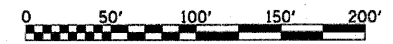
TOTAL HOLDING = 270.000 AC. ±
 TOTAL R.O.W. REQUIRED = 0.468 AC. ±
 AREA IN EX. R.O.W. = 0.325 AC.
 NET R.O.W. REQ'D. = 0.143 AC. ±
 REMAINDER = 269.532 AC. ±



SURVEYOR'S STATEMENT

I, CURT A. BENDER, HEREBY CERTIFY THAT I AM A PROFESSIONAL LAND SURVEYOR OF THE STATE OF ILLINOIS, THAT THE SURVEY OF F.A.P. 681 ILL. ROUTE 116 WAS MADE BY WILLET HOFMANN & ASSOCIATES, INC. UNDER MY DIRECTION, AT THE REQUEST OF THE ILLINOIS DEPARTMENT OF TRANSPORTATION, DISTRICT 3, AND THAT THE SURVEY IS TRUE AND COMPLETE AS SHOWN TO THE BEST OF MY KNOWLEDGE AND BELIEF, THAT ALL MONUMENTS AND MARKS ARE OF THE CHARACTER AND OCCUPY THE POSITION SHOWN THEREON, AND ARE SUFFICIENT TO ENABLE THE SURVEY TO BE RETRACED. THIS PROFESSIONAL SERVICE CONFORMS TO THE CURRENT ILLINOIS MINIMUM STANDARDS FOR A BOUNDARY SURVEY.

7 DECEMBER 2009
 Curt A. Bender
 CURT A. BENDER, ILLINOIS PROFESSIONAL LAND SURVEYOR NO. 3688 (EXPIRES NOVEMBER 2010)
 WILLET, HOFMANN & ASSOCIATES, INC. - DESIGN FIRM NO. 184-000918



NOTE: FOR THE PURPOSES OF THIS PLAT, BEARINGS ARE BASED UPON AN ASSUMED NORTH.

FILE NAME	USER NAME = #USER#	DESIGNED -	REVISED -	STATE OF ILLINOIS DEPARTMENT OF TRANSPORTATION	RIGHT OF WAY PLANS		F.A.P. RTE.	SECTION	COUNTY	TOTAL SHEETS	SHEET NO.
#FILE#		DRAWN -	REVISED -		PROJECT	JOB NO. R93-008-09	681	(116)1	FORD	146	468
		CHECKED - C B	REVISED -		SCALE: 1" = 50'	SHEET NO. 1 OF 1 SHEETS	STA. 104+50.00 TO STA. 109+50.00	ILLINOIS 116		CONTRACT NO. 66830	
		DATE	REVISED -				FED. ROAD DIST. NO.	ILLINOIS	FED. AID PROJECT		

V:\1085509 ID-3 Ford Co. 116\1085509-311-CONTR-PLAN.dwg

WILLET, HOFMANN & ASSOCIATES, INC.
 CONSULTING ENGINEERS
 100 East Second Street
 Peoria, Illinois 61602
 Phone: 309.673.1111
 Fax: 309.673.1112
 www.willett-hofmann.com