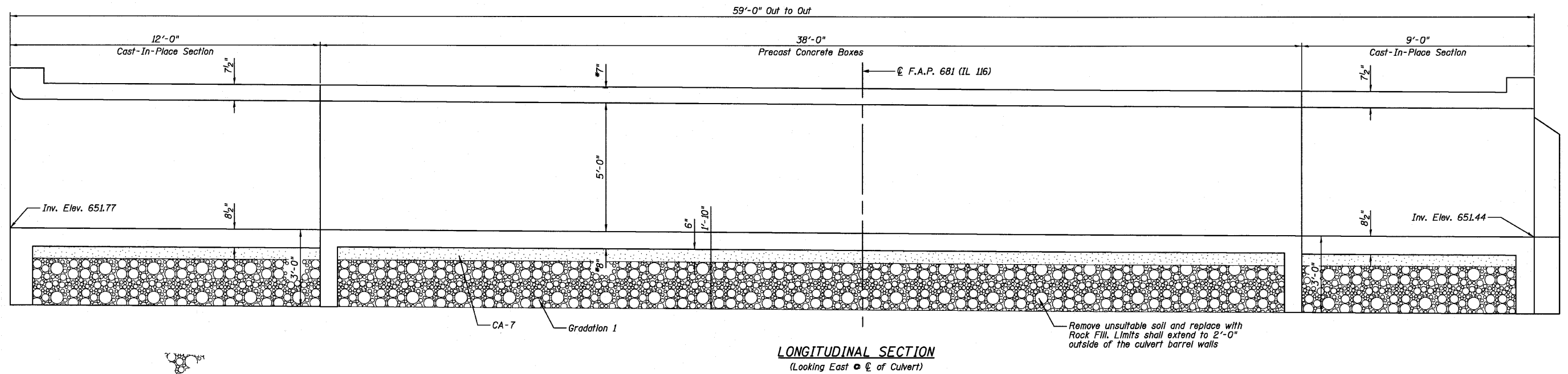
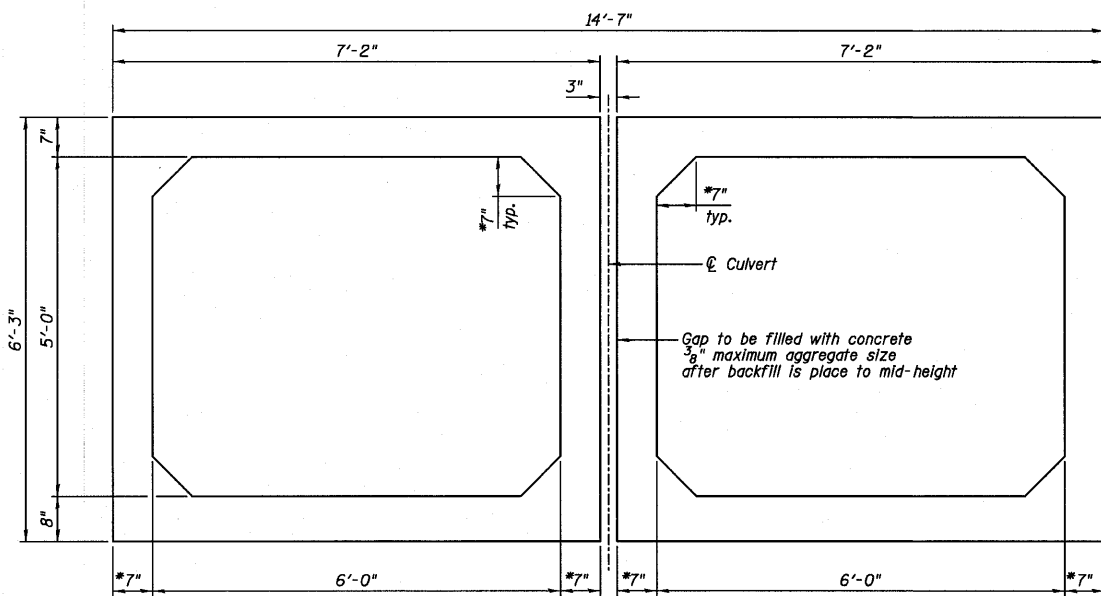


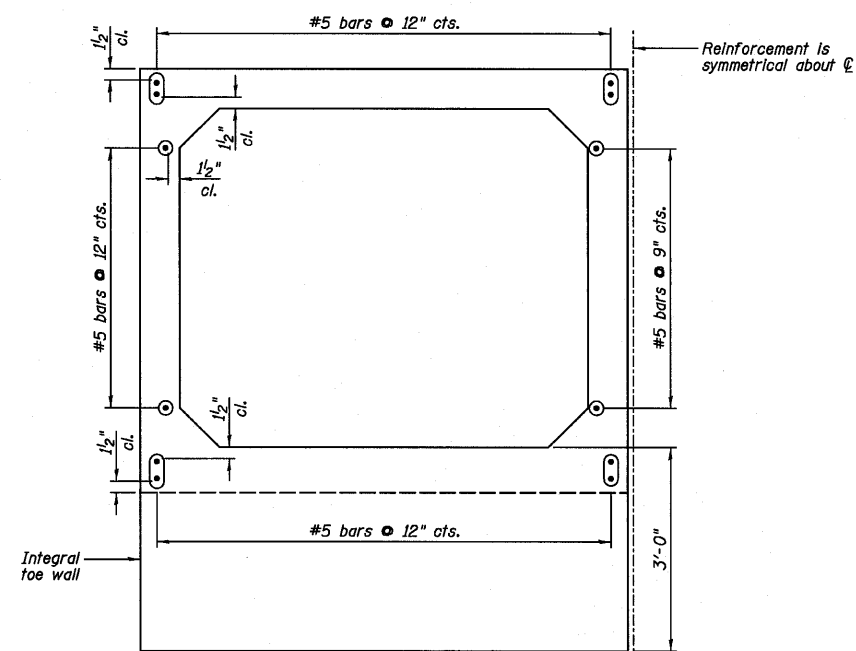
STATE OF ILLINOIS
DEPARTMENT OF TRANSPORTATION



LONGITUDINAL SECTION
(Looking East of Culvert)



SECTION THRU PRECAST CONCRETE BARRELS



PRECAST CONCRETE CULVERT END ELEVATION
Section is symmetrical about $\text{\textcircled{C}}$ Culvert

NOTES:

- 1.) *Confirm slab and wall thickness with Precaster.
- 2.) For Cast-In-Place concrete portions, see Sheet C4-C9.
- 3.) B.O.F. denotes Bottom Of Footing.
- 4.) Cost of reinforcing bars extending from precast barrels included with the cost of Precast Concrete Box Culvert.

**LONGITUDINAL SECTION,
PRECAST CONCRETE
SECTION AND ELEVATION
STRUCTURE NO. 027-2553**

DESIGNED	SDH
CHECKED	JML
DRAWN	JWK/DJM
CHECKED	MSW

DATE 08/04/10

Farnsworth GROUP, INC. 2709 McGraw Drive Bloomington, Illinois 61704 309/663-8435, 309/663-1571 fax	SHEET NO. C3	F.A.P. RTE.	SECTION	COUNTY	TOTAL SHEETS	SHEET NO.
	12 SHEETS	681	*	FORD/IROQUOIS	146	58
		FED. ROAD DIST. NO.		ILLINOIS FED. AID PROJECT		
				CONTRACT NO. 66880		

* 116 BR/L116 BR, (BR-2)BR, I & BR-3J

24-8271