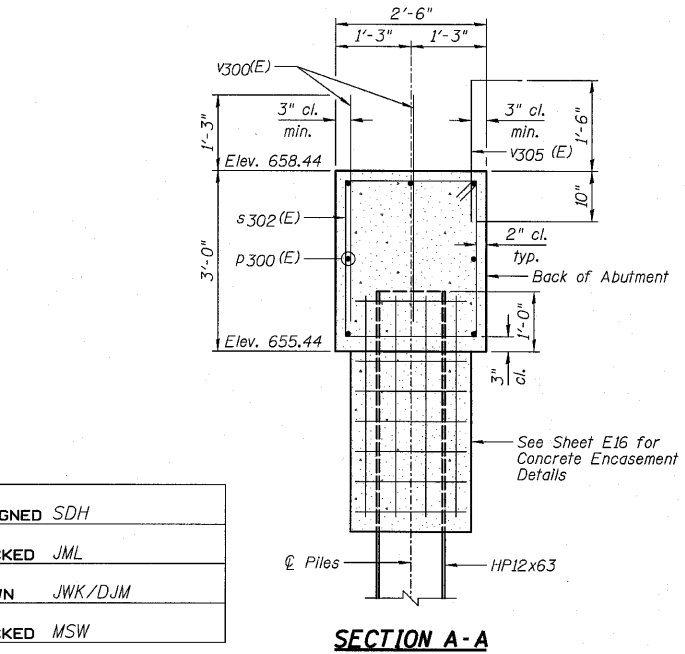
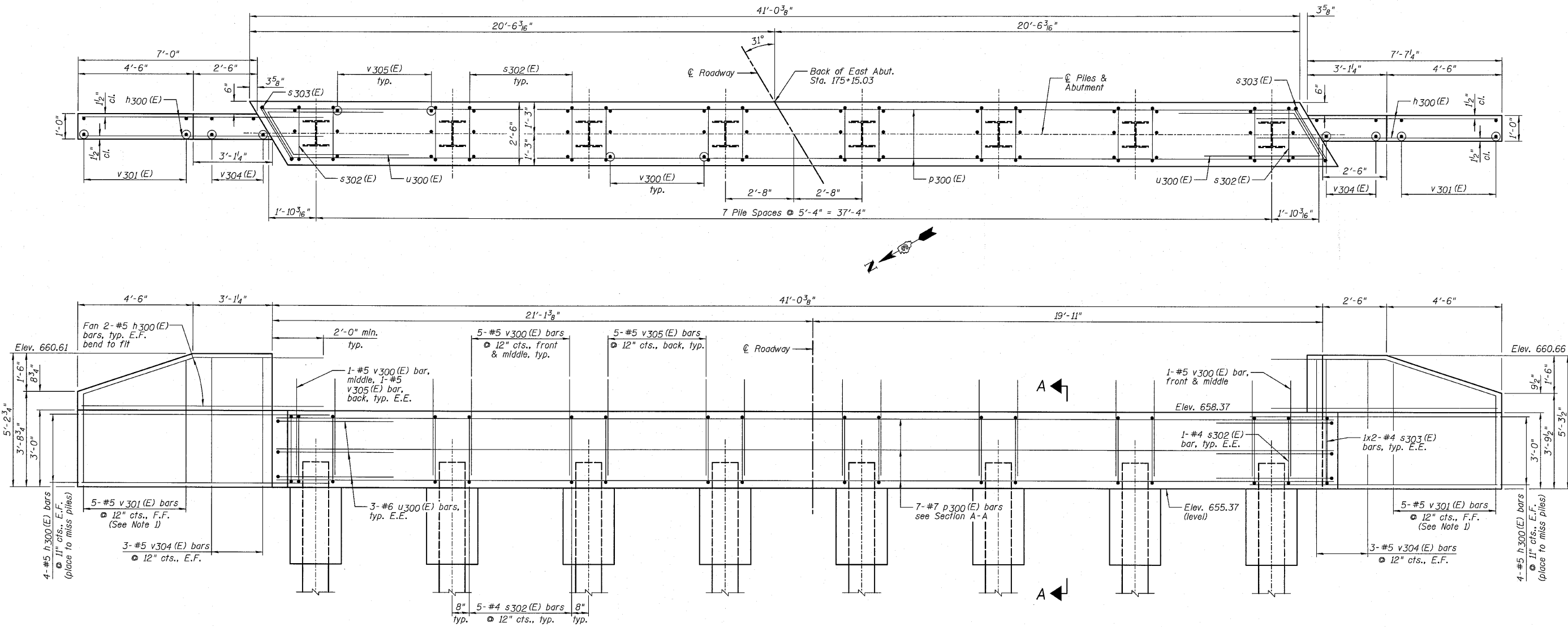


STATE OF ILLINOIS
DEPARTMENT OF TRANSPORTATION

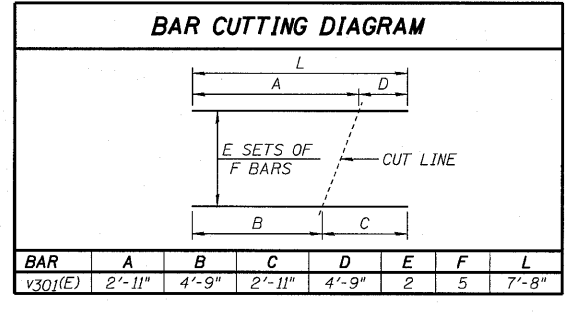
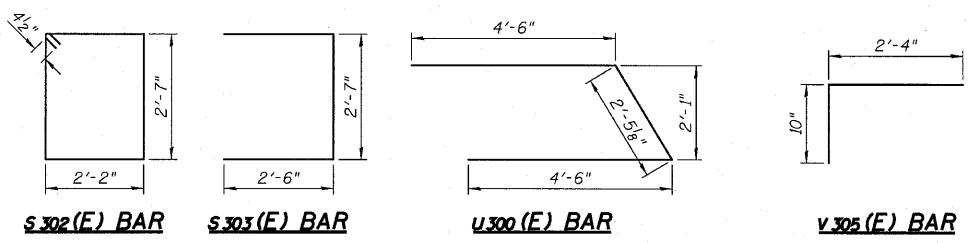


**EAST ABUTMENT
BILL OF MATERIAL**

Bar	No.	Size	Length	Shape
h300(E)	24	#5	9'-5"	—
p300(E)	7	#7	40'-8"	—
s302(E)	37	#4	10'-3"	□
s303(E)	4	#4	7'-8"	□
u300(E)	6	#6	11'-5"	└
v300(E)	73	#5	3'-9"	—
v301(E)	10	#5	7'-8"	—
v304(E)	12	#5	4'-11"	—
v305(E)	36	#5	3'-2"	—

Item	Unit	Quantity
Porous Granular Embankment, Special	Cu. Yd.	35
Structure Excavation	Cu. Yd.	49
Concrete Structures	Cu. Yd.	13.9
Concrete Encasement	Cu. Yd.	2.8
Reinforcement Bars, Epoxy Coated	Pound	1,800
Furnishing Steel Piles HP12x63	Foot	232
Driving Piles	Foot	232
Pile Shoes	Each	8
Geocomposite Wall Drain	Sq. Yd.	20
Pipe Underdrains For Structures 4"	Foot	68

**ELEVATION
(Looking East)**



PILE DATA:

Pile Type and Size	Steel - HP12x63 with Pile Shoes
Nominal Required Bearing	224 kips
Factored Resistance Available	112 kips
Estimated Pile Length	29 Feet
Number of Production Piles	8
Number of Test Piles	0

- NOTES:**
- Order v301 (E) bars full length. Cut according to Bar Cutting Diagram. Use remainder of bars in Back Face.
 - Bend or cut h300(E) bars to miss piles.
 - E.E. denotes Each End, F.F. denotes Front Face and E.F. denotes Each Face.

DESIGNED SDH
CHECKED JML
DRAWN JWK/DJM
CHECKED MSW

DATE 08/04/10

Farnsworth GROUP, INC.
2709 McGraw Drive
Bloomington, Illinois 61704
309/663-8435, 309/663-1571 fax

SHEET NO. E12
18 SHEETS

F.A.P. RTE.	SECTION	COUNTY	TOTAL SHEETS	SHEET NO.
681	*	FORD/IROQUOIS	146	97

CONTRACT NO. 66880

FED. ROAD DIST. NO. ILLINOIS FED. AID PROJECT

**EAST ABUTMENT
STRUCTURE NO. 027-0098**