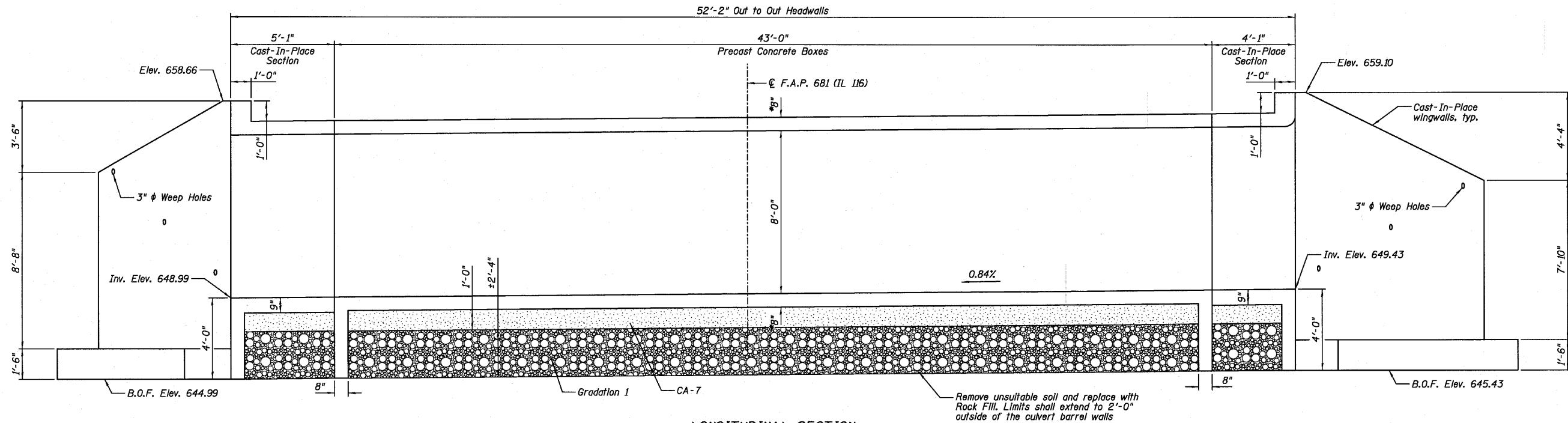
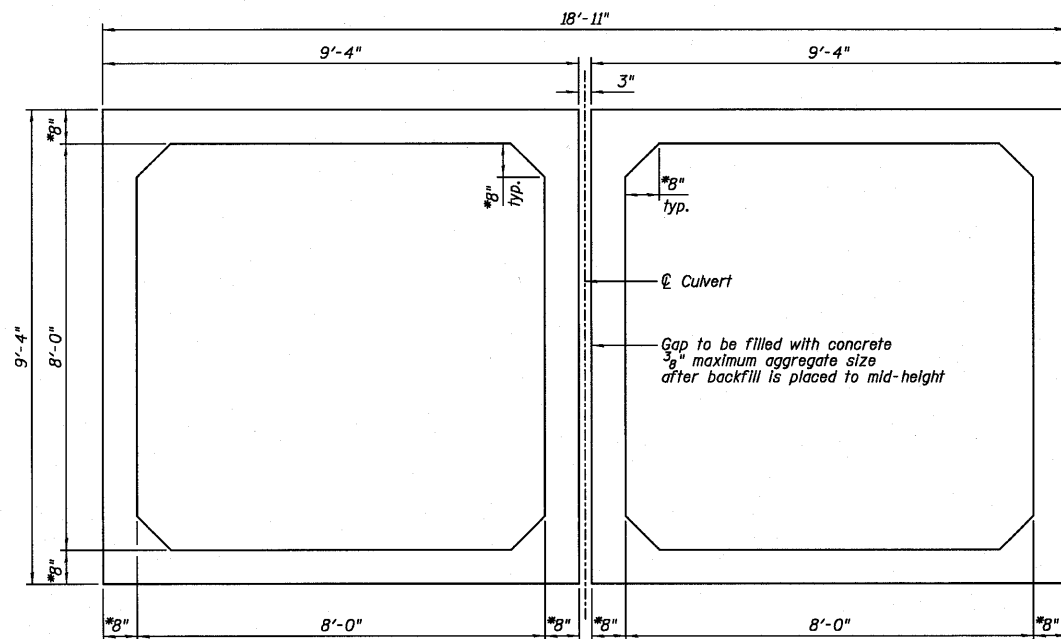


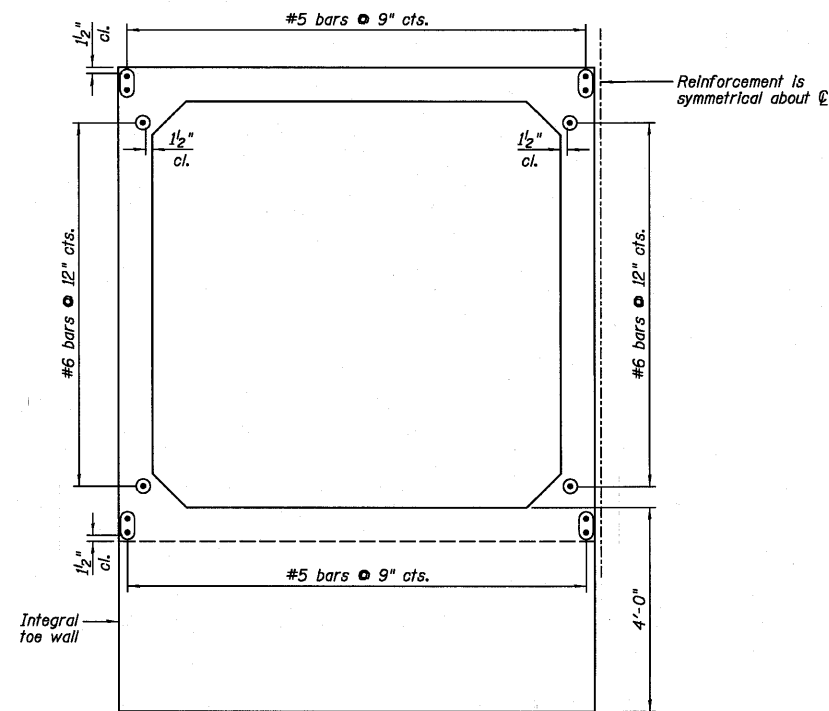
STATE OF ILLINOIS
DEPARTMENT OF TRANSPORTATION



LONGITUDINAL SECTION
(Looking East • \bar{C} of Culvert)



SECTION THRU PRECAST CONCRETE BARRELS



PRECAST CONCRETE CULVERT END ELEVATION
Section is symmetrical about \bar{C} culvert.

**LONGITUDINAL SECTION,
SECTION THRU PRECAST
BARRELS AND PRECAST
END ELEVATION
STRUCTURE NO. 038-2549**

DESIGNED	SDH
CHECKED	JML
DRAWN	JWK/DJM
CHECKED	MSW

DATE 08/04/10

NOTES:

- 1.) Confirm slab and wall thickness with Precaster.
- 2.) For Cast-In-Place concrete portions, see Sheets F3-F7.
- 3.) B.O.F. denotes Bottom Of Footing.
- 4.) Cost of reinforcing bars extending from precast barrels included with the cost of precast concrete box culverts.

Farnsworth GROUP, INC.
2709 McGraw Drive
Bloomington, Illinois 61704
309/663-8435, 309/663-1571 fax

SHEET NO. F2

10 SHEETS

F.A.P. RTE.	SECTION	COUNTY	TOTAL SHEETS	SHEET NO.
681	*	FORD/IROQUOIS	146	105
FED. ROAD DIST. NO.			CONTRACT NO. 66880	
ILLINOIS FED. AID PROJECT				

* 116 BR/[116 BR, (BR-2)BR, I & BR-3]

24-8271