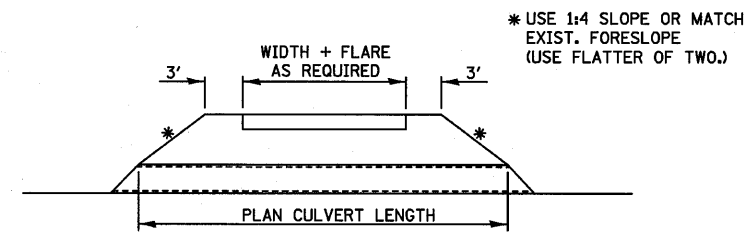
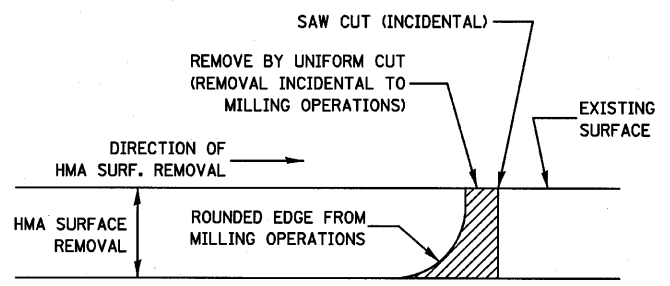


**SECTION A-A**

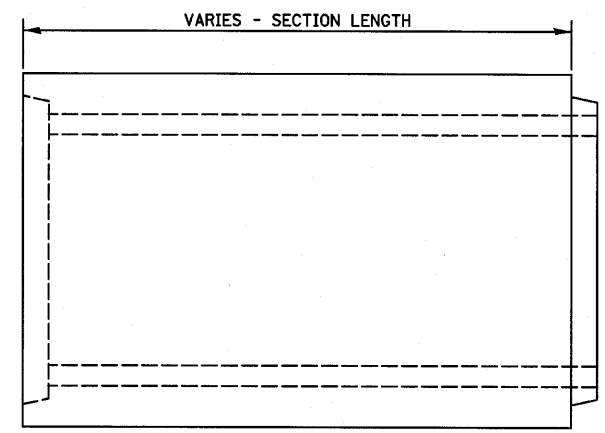
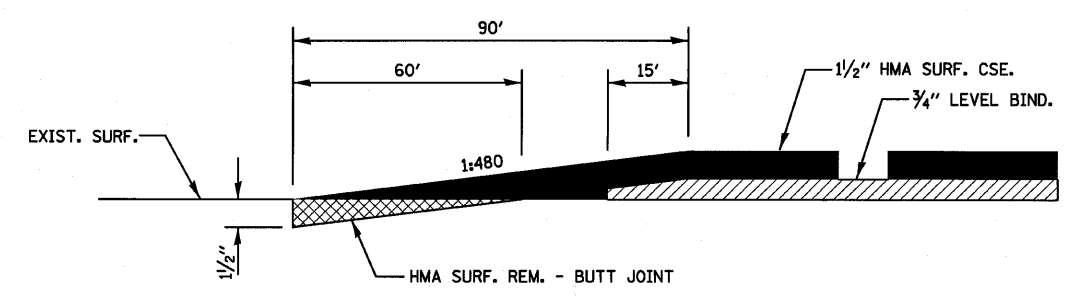


**FIELD ENTRANCE DETAIL**

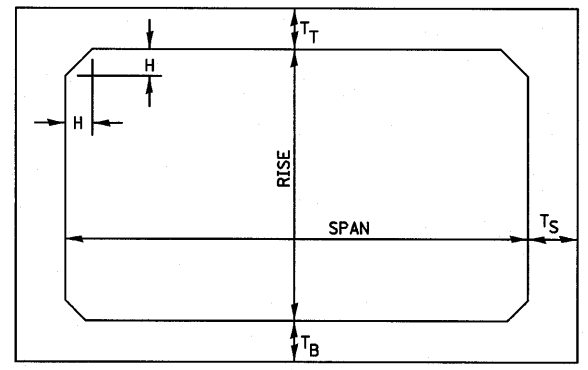


NOTE:  
WHEN MILLING OPERATIONS PRODUCE A ROUNDED EDGE, THEN A SAW CUT SHALL BE USED TO MANUFACTURE A PERPENDICULAR EDGE AS SHOWN IN THE DETAIL. THE ENGINEER SHALL BE THE SOLE JUDGE CONCERNING THE USE OF THIS DETAIL.

**HMA DETAIL AT BUTT JOINTS**



**ELEVATION**



NOTE: THE HAUNCH DIMENSION H, IS EQUAL TO THE WALL THICKNESS T<sub>S</sub>.

**TYPICAL BOX SECTION**

SPAN, FEET	T <sub>T</sub> , INCHES		T <sub>B</sub> , INCHES		T <sub>S</sub> , INCHES	
	M 259	M 273	M 259	M 273	M 259	M 273
3	4	7	4	6	4	4
4	5	7 1/2	5	6	5	5
5	6	8	6	7	6	6
6	7	8	7	7	7	7
7	8	8	8	8	8	8
8	8	8	8	8	8	8
9	9	9	9	9	9	9
10	10	10	10	10	10	10
11	11	11	11	11	11	11
12	12	12	12	12	12	12

**TYPICAL THICKNESSES**

GENERAL NOTES:  
MINIMUM COVER FOR BOX CULVERTS SHALL BE 6".

**PRECAST CONCRETE BOX SECTION**

FILE NAME =	USER NAME = #USER*	DESIGNED - JML	REVISED -
#FILE#		DRAWN - DJM	REVISED -
	PLOT SCALE = #SCALE*	CHECKED - MSW	REVISED -
	PLOT DATE = #DATE*	DATE - 08/04/10	REVISED -

STATE OF ILLINOIS  
DEPARTMENT OF TRANSPORTATION

SCALE:	SHEET NO.	OF	SHEETS	STA.	TO STA.
--------	-----------	----	--------	------	---------

F.A.P. RTE.	SECTION	COUNTY	TOTAL SHEETS	SHEET NO.
681	*	FORD/TROQUOIS	146	116
FED. ROAD DIST. NO.			ILLINOIS FED. AID PROJECT	CONTRACT NO. 66880