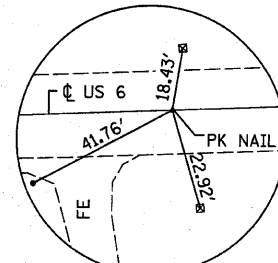
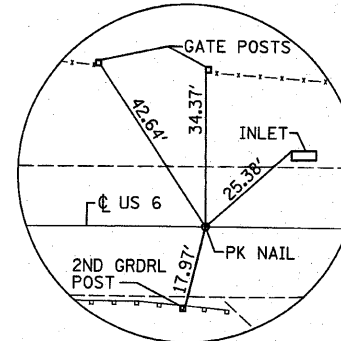


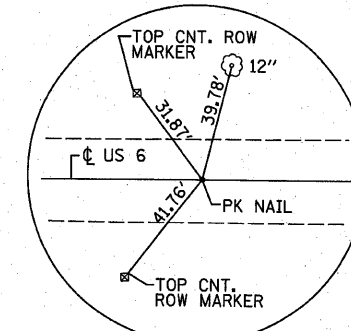
PC STA. 414+37.64
 N: 1,699,178.1756
 E: 914,525.8074



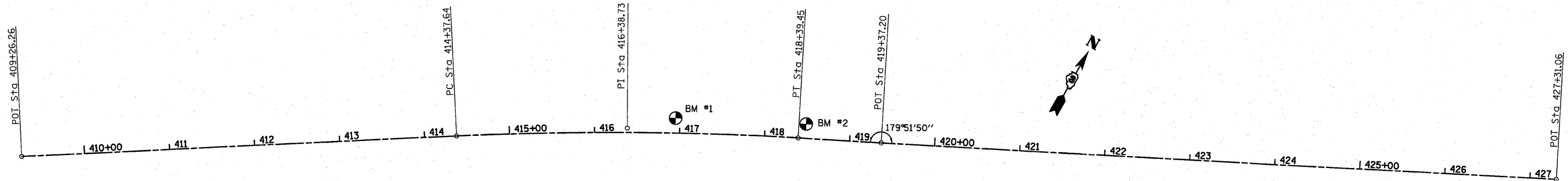
PI STA. 416+38.73
 N: 1,699,292.0282
 E: 914,691.5643



PT STA. 418+39.45
 N: 1,699,387.8470
 E: 914,868.3595



POT STA. 419+37.20
 N: 1,699,434.4207
 E: 914,954.2928



PI STA. = 416+38.73
 $\Delta = 6^\circ 01' 38''$ (RT)
 $D = 1^\circ 30' 00''$
 $R = 3,819.72'$
 $T = 201.09'$
 $L = 401.81'$
 $E = 5.29'$
 P.C. STA = 414+37.64
 P.T. STA = 418+39.45

BM #1- CHISELED SQUARE ON
 TOP OF NW WINGWALL
 STA 416+94.59, 18.23' LT
 ELEVATION = 529.78

BM #2- CHISELED SQUARE
 IN TOP OF CURB
 STA 418+48.41, 16.96' LT
 ELEVATION = 529.96

FILE NAME =	USER NAME = mkebusch	DESIGNED -	REVISED -
M:\26854\WO 7 US 6 5-Lane - SN 032-008	Microstation\sheet01.dgn	DRAWN -	REVISED -
	PLOT SCALE = 20.0000 / IN.	CHECKED -	REVISED -
	PLOT DATE = 6/22/2010	DATE -	REVISED -

STATE OF ILLINOIS
 DEPARTMENT OF TRANSPORTATION

ALIGNMENT & TIES

SCALE:	SHEET NO.	OF	SHEETS	STA.	TO STA.
--------	-----------	----	--------	------	---------

F.A.P. RTE.	SECTION	COUNTY	TOTAL SHEETS	SHEET NO.
623	(D) BR	GRUNDY	35	7
FED. ROAD DIST. NO. ILLINOIS FED. AID PROJECT			CONTRACT NO. 66913	