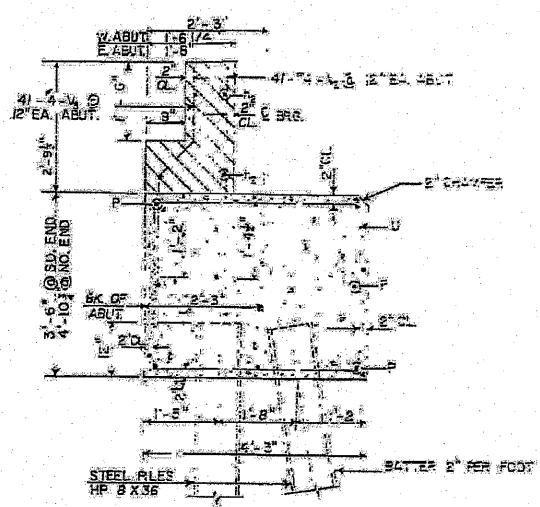
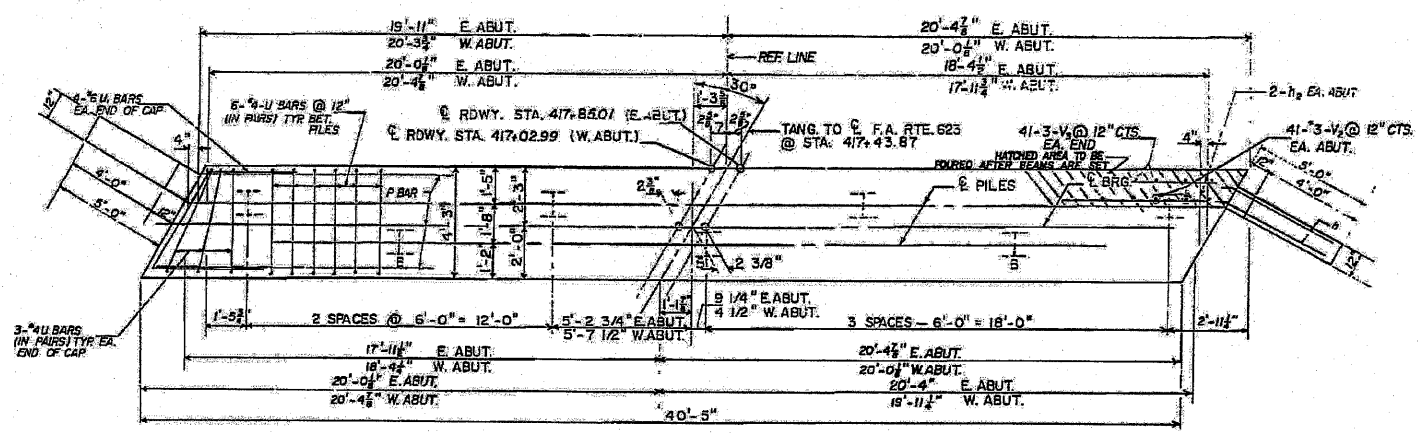


**ELEVATION**  
WEST ABUT. SHOWN  
EAST ABUT. OPPOSITE SUPERELEV.



**SEC. THRU CAP**  
ALL DIMENSIONS @ RT. 2'S

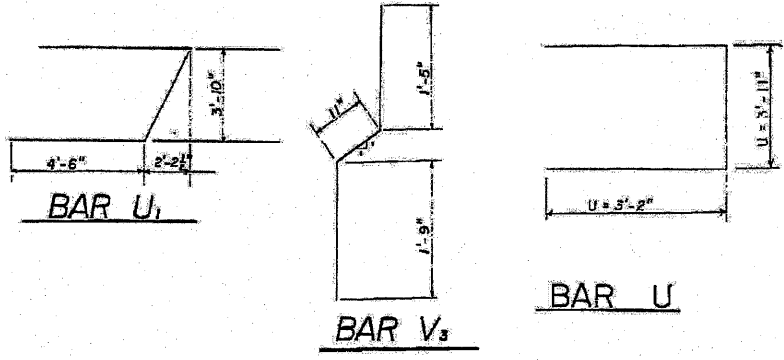
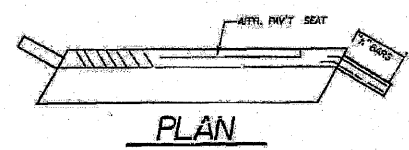


**PLAN**

**SECTION THRU WINGWALL**

**PILE DATA**

TYPE STEEL HP 8X36  
CAPACITY DRIVEN TO REFUSAL  
NO. REQUIRED 12 x 2 TEST PILES  
EST. LENGTH 10 FT.



**BILL OF MATERIAL - SUBSTR.**

BAR	NO.	SIZE	LENGTH	SHAPE
P	16	"7	40'-0"	
U	168	"4	10'-3"	
U1	16	"6	13'-5"	
V	20	"4	8'-9"	
V1	20	"4	7'-0"	
V2	74	"4	4'-0"	
V3	74	"4	4'-1"	
h	36	"4	6'-0"	
h1	24	"4	4'-3"	
h2	16	"6	21'-0"	
CLASS X CONCRETE		CU. YDS	66.1	
REINFORCEMENT BARS		LEBS	4080	
FURN. STL. PILES HP 8 X 36		LN. FT.	120	
TEST PILES, HP 8 X 36		EA.	2	

ABUTMENTS  
F.A. RTE. 523 (U.S. RT. 6)  
SECTION O-BR-1  
GRUNDY COUNTY  
STATION 417+43.87