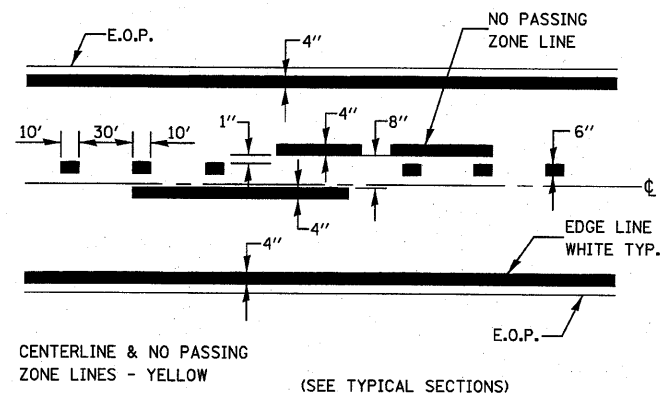
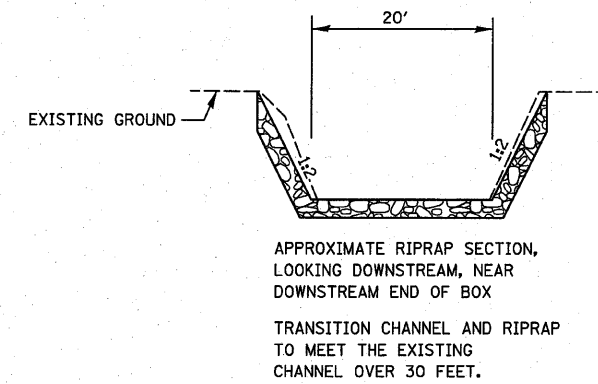


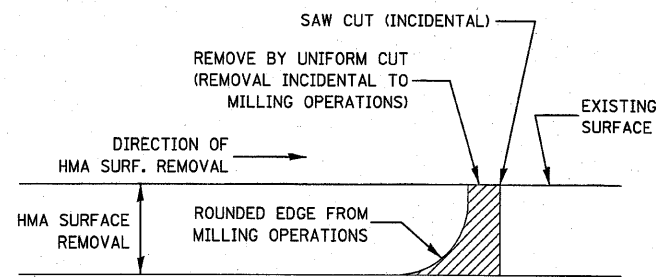
FIELD ENTRANCE DETAIL



PAVEMENT MARKING



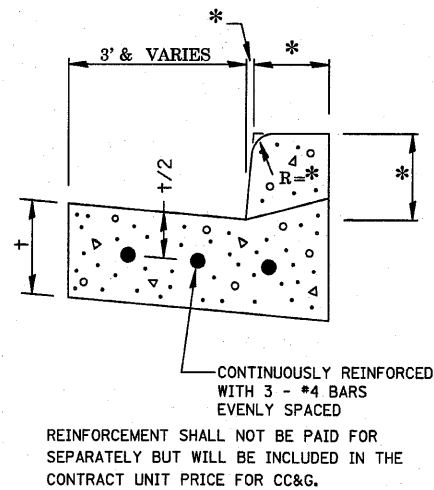
RIPRAP DETAIL



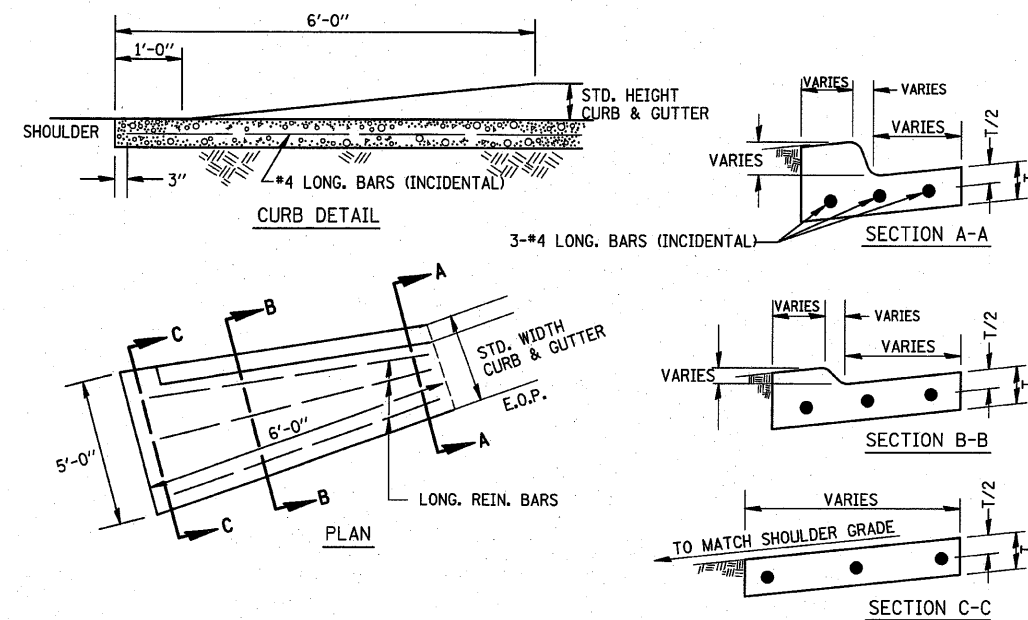
NOTE:
WHEN MILLING OPERATIONS PRODUCE A ROUNDED EDGE, THEN A SAW CUT SHALL BE USED TO MANUFACTURE A PERPENDICULAR EDGE AS SHOWN IN THE DETAIL. THE ENGINEER SHALL BE THE SOLE JUDGE CONCERNING THE USE OF THIS DETAIL

HMA SURFACE REMOVAL DETAIL

* VARIES - SEE STANDARD 606001



REINFORCEMENT DETAIL FOR COMBINATION CONCRETE CURB AND GUTTER



CURB & GUTTER OUTLET SPECIAL

FILE NAME =	USER NAME = mkebusch	DESIGNED -	REVISED -
M:\26854\WO 7 US 6 5-Lane - SN 832-828	Microstation\sheet81.dgn	DRAWN -	REVISED -
	PLOT SCALE = 28.0000' / IN.	CHECKED -	REVISED -
	PLOT DATE = 6/28/2018	DATE -	REVISED -

STATE OF ILLINOIS
DEPARTMENT OF TRANSPORTATION

MISCELLANEOUS DETAILS

SCALE:	SHEET NO.	OF	SHEETS	STA.	TO STA.
--------	-----------	----	--------	------	---------

F.A.P. RTE.	SECTION	COUNTY	TOTAL SHEETS	SHEET NO.
623	(O) BR	GRUNDY	35	26
CONTRACT NO. 66913				
FED. ROAD DIST. NO. [ILLINOIS] FED. AID PROJECT				