

F.A. RTE.	SECTION	COUNTY	TOTAL SHEETS	SHEET NO.
*	D3 TREE PLANTING 2011	LIVINGSTON	14	1
*FAI 55 & FAS 298		ILLINOIS	CONTRACT NO. 66A22	

INDEX OF SHEETS

- 1 COVER SHEET
- 2 GENERAL NOTES, SUMMARY OF QUANTITIES
- 3 SCHEDULES OF QUANTITIES
- 4 - 5 OLD 66 PLAN VIEWS AND DETAILS FOR TREE PLANTING
- 6 - 13 I-55 PLAN VIEWS FOR SHRUB PLANTING
- 14 SHRUB PLANTING DETAILS

STANDARDS

- 000001-05 STANDARD SYMBOLS, ABBREVIATIONS AND PATTERNS
- 701001-02 OFF-ROAD OPERATIONS 2L, 2W, MORE THAN 15' (4.5 m) AWAY
- 701006-03 OFF-ROAD OPERATIONS 2L, 2W, 15' (4.5 m) TO 24" (600 mm) FROM PAVEMENT EDGE
- 701101-02 OFF-ROAD OPERATIONS MULTILANE, 15' (4.5 m) TO 24" (600 mm) FROM PAVEMENT EDGE
- 701106-02 OFF-ROAD OPERATIONS, MULTILANE, MORE THAN 15' (4.5 m) AWAY
- 701901-01 TRAFFIC CONTROL DEVICES

**STATE OF ILLINOIS
DEPARTMENT OF TRANSPORTATION**

DIVISION OF HIGHWAYS

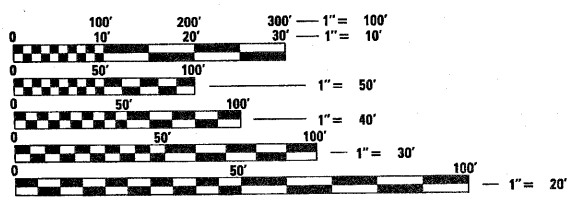
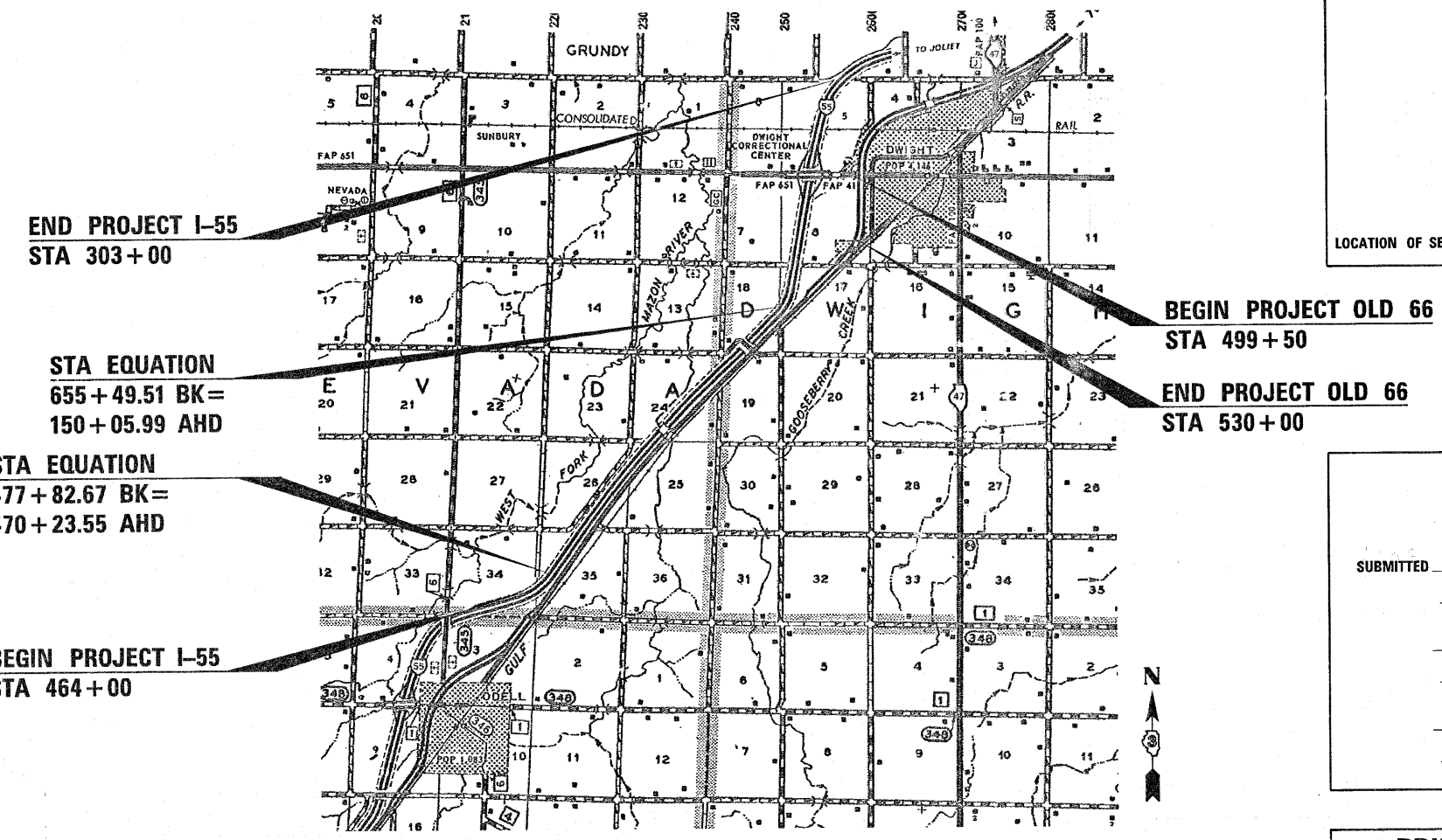
**PROPOSED
HIGHWAY PLANS**

**ROUTES FAI 55 & FAS 298 (OLD 66)
SECTION D3 TREE PLANTING 2011**

LIVINGSTON COUNTY

C-93-105-10

D-93-037-10



FULL SIZE PLANS HAVE BEEN PREPARED USING STANDARD ENGINEERING SCALES. REDUCED SIZED PLANS WILL NOT CONFORM TO STANDARD SCALES. IN MAKING MEASUREMENTS ON REDUCED PLANS, THE ABOVE SCALES MAY BE USED.

J.U.L.I.E.
JOINT UTILITY LOCATION INFORMATION FOR EXCAVATION
1-800-892-0123
OR 811

DISTRICT 3 NO. (815) 434-6131
PROJECT ENGINEER: CRAIG REED
UNIT CHIEF: BRAD DUNCAN

CONTRACT NO. 66A22

ROUTE FAI 55 + FAS 298 = TOTAL
LENGTH = 35,202.64 FT. (6.667 MILES) + 3,050.00 FT. (0.578 MILE) = 38,252.64 FT. (7.245 MILES)

STATE OF ILLINOIS
DEPARTMENT OF TRANSPORTATION
DIVISION OF HIGHWAYS

SUBMITTED August 12 2010
George Ryan
DEPUTY DIRECTOR OF HIGHWAYS, REGION ENGINEER

October 1 2010
Scott E. Stitt, P.E.
acting ENGINEER OF DESIGN AND ENVIRONMENT

October 1 2010
Christina M. Reed
DIRECTOR OF HIGHWAYS, CHIEF ENGINEER

**PRINTED BY THE AUTHORITY
OF THE STATE OF ILLINOIS**