

F.A.P. RTE.	SECTION	COUNTY	TOTAL SHEETS	SHEET NO.
619	(70)I-1	LASALLE	1	1
		ILLINOIS	CONTRACT NO. 66A71	

STATE OF ILLINOIS
DEPARTMENT OF TRANSPORTATION

DIVISION OF HIGHWAYS

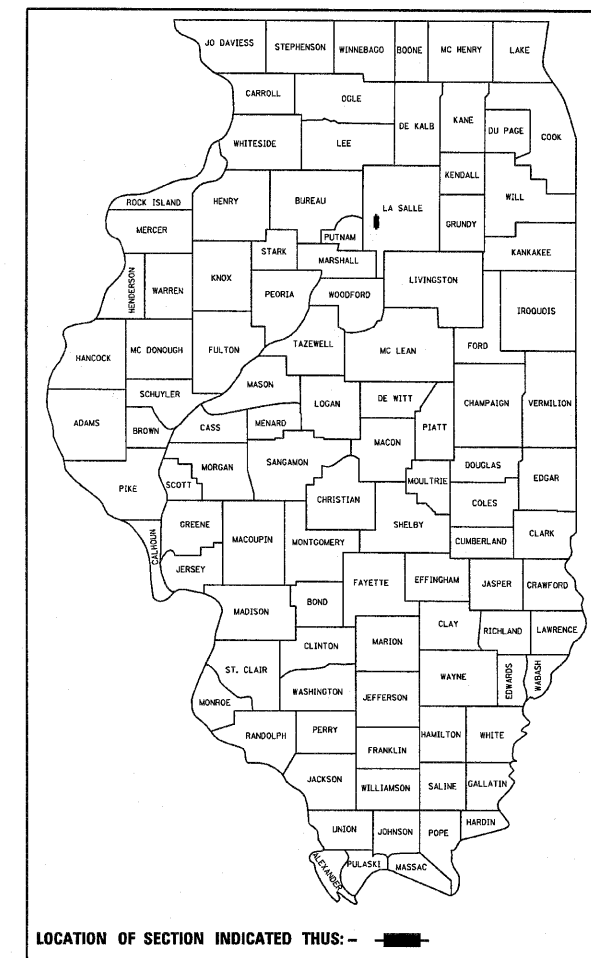
**PROPOSED
HIGHWAY PLANS**

**FAP ROUTE 619 (IL 71 /351)
SECTION (70)I-1**

**TYPE of IMPROVEMENT-TREE REMOVAL
LASALLE COUNTY**

C-93-013-11

D-93-019-11



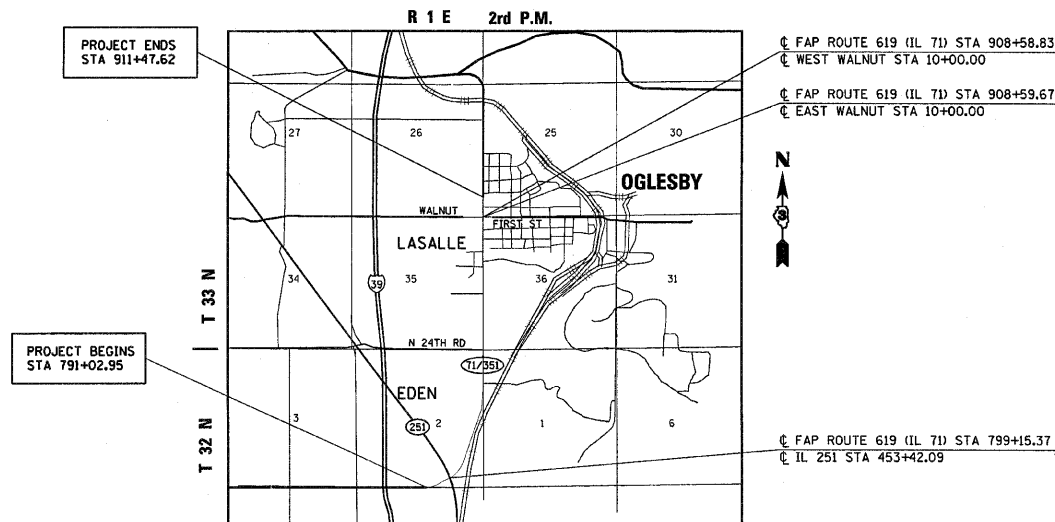
INDEX

- 1 COVER SHEET
- 2 GENERAL NOTES
- 3 SUMMARY OF QUANTITIES AND TREE REMOVAL SCHEDULE
- 4-11 TREE REMOVAL PLAN SHEETS

STANDARDS

- 000001-05 STANDARD SYMBOLS, ABBREVIATIONS AND PATTERNS
- 001006 DECIMAL OF AN INCH AND OF A FOOT
- 701001-02 OFF-ROAD OPERATIONS 2L, 2W, MORE THAN 15' (4.5 m) AWAY
- 701006-03 OFF-ROAD OPERATIONS 2L, 2W, 15' (4.5 m) TO 24" (600 mm) FROM PAVEMENT EDGE
- 701011-02 OFF-ROAD MOVING OPERATIONS 2L, 2W, DAY ONLY
- 701201-03 LANE CLOSURE, 2L, 2W, DAY ONLY, FOR SPEEDS GREATER THAN OR EQUAL TO 45 MPH
- 701901-01 TRAFFIC CONTROL DEVICES

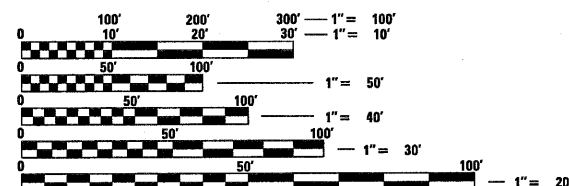
C-93-044-04



LOCATION MAP

EDEN & LASALLE TOWNSHIP

GROSS LENGTH = NET LENGTH = 11,880 FT. = 2.25 MILE



FULL SIZE PLANS HAVE BEEN PREPARED USING STANDARD ENGINEERING SCALES. REDUCED SIZED PLANS WILL NOT CONFORM TO STANDARD SCALES. IN MAKING MEASUREMENTS ON REDUCED PLANS, THE ABOVE SCALES MAY BE USED.

J.U.L.I.E.
JOINT UTILITY LOCATION INFORMATION FOR EXCAVATION
1-800-892-0123
OR 811

PROJECT ENGINEER JOE KANNEL, P.E.
PROJECT MANAGER PAT BRABOY

CONTRACT NO. 66A71

DESIGN DESIGNATION

- FAP ROUTE 619 (IL 71/351) URBAN PRINCIPAL ARTERIAL
- FAU ROUTE (WALNUT STREET) MINOR ARTERIAL
- ADT 5400 (2007) IL 71/351 4.4% TRUCKS
- ADT 7400 (2007) WALNUT STREET 7.8% TRUCKS

STATE OF ILLINOIS
DEPARTMENT OF TRANSPORTATION
DIVISION OF HIGHWAYS

SUBMITTED Sept. 24 20 11
George DeGroot
DEPUTY DIRECTOR OF HIGHWAYS, REGION ENGINEER
October 1 20 10
Scott E. Stitt, P.E.
acting ENGINEER OF DESIGN AND ENVIRONMENT
October 1 20 10
Christine M. Road
DIRECTOR OF HIGHWAYS, CHIEF ENGINEER

**PRINTED BY THE AUTHORITY
OF THE STATE OF ILLINOIS**

GENERAL NOTES
(Revised May 13, 2009)

SEEDING SHALL NOT BE PERMITTED AT ANY TIME WHEN THE GROUND IS FROZEN, WET, OR IN AN UNTILLABLE CONDITION. LOCATIONS TO BE SEEDED WILL BE DETERMINED BY THE ENGINEER.

ONLY THOSE TREES DESIGNATED BY THE ENGINEER OR LISTED IN THE TREE REMOVAL SCHEDULE SHALL BE REMOVED. THE CONTRACTOR SHALL PROTECT ALL REMAINING TREES FROM DAMAGE DUE TO HIS OPERATIONS.

ANY REFERENCE TO A STANDARD IN THESE PLANS SHALL BE INTERPRETED TO MEAN THE EDITION AS INDICATED BY THE SUBNUMBER SHOWN IN THE LIST OF STANDARDS OR THE COPY INCLUDED IN THESE PLANS.

THE CONTRACTOR SHALL CONTACT JULIE AT LEAST 48 HOURS PRIOR TO EXCAVATION TO DETERMINE WHICH UTILITIES ARE IN THE AREA.

STATE OF ILLINOIS
DEPARTMENT OF TRANSPORTATION
DISTRICT THREE

PREPARED BY: Don Rowland
DISTRICT STUDIES & PLANS ENGINEER

DATE: _____

EXAMINED BY: Herb Jmy
DISTRICT CONSTRUCTION ENGINEER

Wayne Phillips
DISTRICT MATERIALS ENGINEER

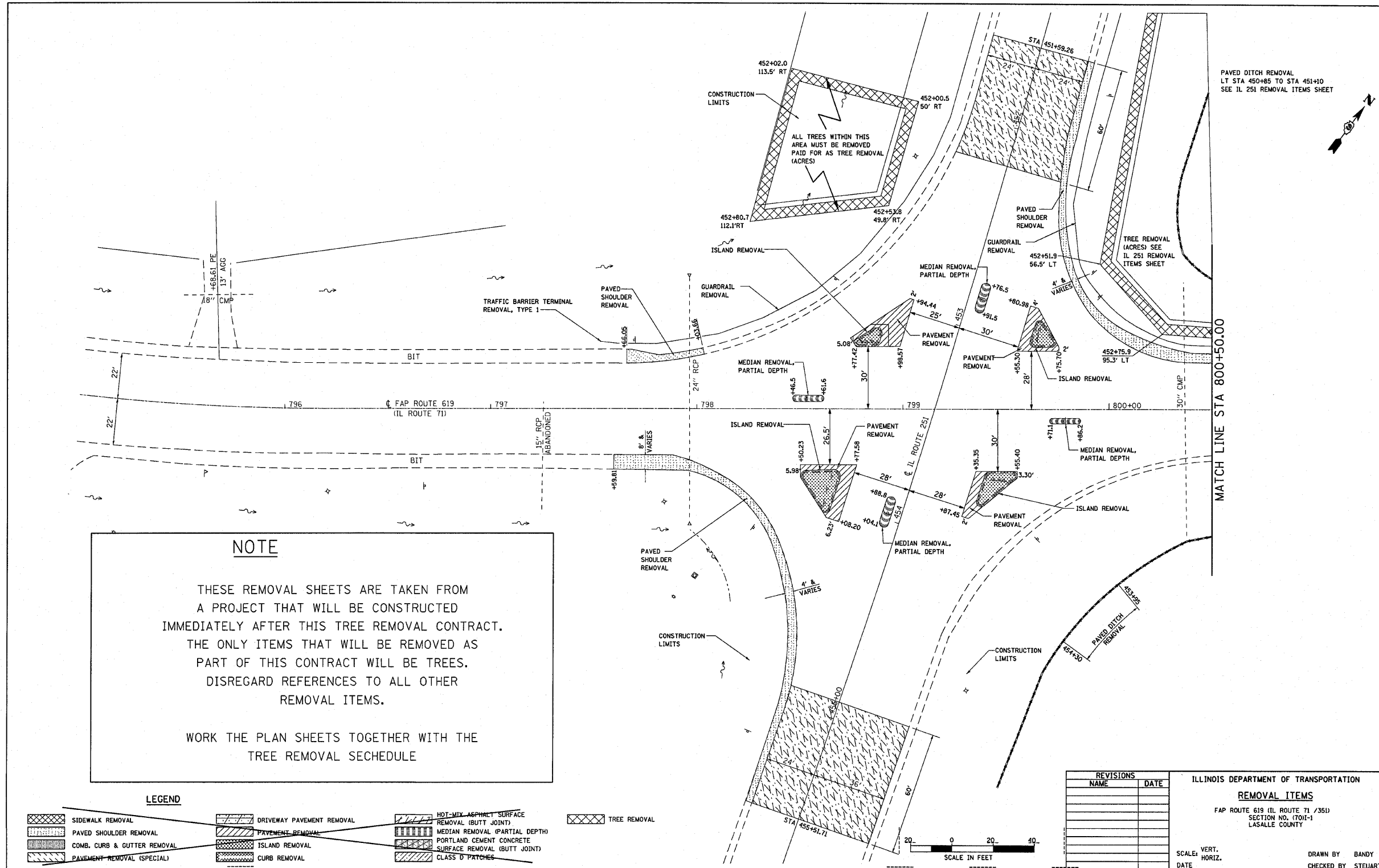
Rance A. Cook
DISTRICT OPERATIONS ENGINEER

FILE NAME =	USER NAME = brcboypc	DESIGNED -	REVISED -	STATE OF ILLINOIS DEPARTMENT OF TRANSPORTATION	GENERAL NOTES	F.A. RTE.:	SECTION	COUNTY	TOTAL SHEETS	SHEET NO.
ca:\pw_work\pwt\dot\braboypc\0240662\0368A71-shs-pln.dgn	DRAWN -	REVISED -	619			(701)-1	LASALLE	11	2	
PLOT SCALE = 50.0000' / IN.	CHECKED -	REVISED -	CONTRACT NO. 66A71							
PLOT DATE = Sep 23, 2010 - 11:21:14 AM	DATE -	REVISED -	ILLINOIS FED. AID PROJECT							
SCALE: _____ SHEET NO. ___ OF ___ SHEETS STA. _____ TO STA. _____										

SUMMARY OF QUANTITIES				100% STATE
CODE NO.	ITEM	UNIT	TOTAL QUANTITY	CONSTRUCTION CODE
				ROADWAY 0005
20100110	TREE REMOVAL (6 TO 15 UNITS DIAMETER)	UNIT	98	98
20100210	TREE REMOVAL (OVER 15 UNITS DIAMETER)	UNIT	76	76
20100500	TREE REMOVAL, ACRES	ACRE	4	4
67100100	MOBILIZATION	L SUM	1	1
70100450	TRAFFIC CONTROL AND PROTECTION, STANDARD 701201	L SUM	1	1

TREE REMOVAL SCHEDULE

LOCATION		TREE REMOVAL (6 TO 15 UNITS DIAMETER)	TREE REMOVAL (OVER 15 UNITS DIAMETER)	TREE REMOVAL ACRES
STATION	SIDE	(UNIT)	(UNIT)	(ACRE)
IL 71				
814+47.95 TO 817+00.00	RT			0.10
817+00.00 TO 823+21.59	RT			0.50
822+69.19 TO 833+72.15	LT			1.90
823+77.88 TO 832+17.67	RT			1.10
835+71.56	RT		46	
838+28	RT		30	
873+29.41	RT	10		
873+30.3	RT	10		
873+39.27	RT	10		
873+43.14	RT	12		
873+44.62	RT	10		
873+45.08	RT	8		
909+08.40	LT	8		
909+56.79	LT	6		
IL 251				
450+94.65 TO 452+75.87				0.40
452+00.49 TO 452+80.69				0.09
WALNUT				
9+10.94	LT	12		
9+42.10	LT	12		
TOTAL		98	76	4



NOTE

THESE REMOVAL SHEETS ARE TAKEN FROM A PROJECT THAT WILL BE CONSTRUCTED IMMEDIATELY AFTER THIS TREE REMOVAL CONTRACT. THE ONLY ITEMS THAT WILL BE REMOVED AS PART OF THIS CONTRACT WILL BE TREES. DISREGARD REFERENCES TO ALL OTHER REMOVAL ITEMS.

WORK THE PLAN SHEETS TOGETHER WITH THE TREE REMOVAL SCHEDULE

LEGEND

	SIDEWALK REMOVAL		DRIVEWAY PAVEMENT REMOVAL		HOT-MIX ASPHALT SURFACE REMOVAL (BUTT JOINT)		TREE REMOVAL
	PAVED SHOULDER REMOVAL		PAVEMENT REMOVAL		MEDIAN REMOVAL (PARTIAL DEPTH)		
	COMB. CURB & GUTTER REMOVAL		ISLAND REMOVAL		PORTLAND CEMENT CONCRETE SURFACE REMOVAL (BUTT JOINT)		
	PAVEMENT REMOVAL (SPECIAL)		CURB REMOVAL		CLASS D PATCHES		

REVISIONS

NAME	DATE

ILLINOIS DEPARTMENT OF TRANSPORTATION

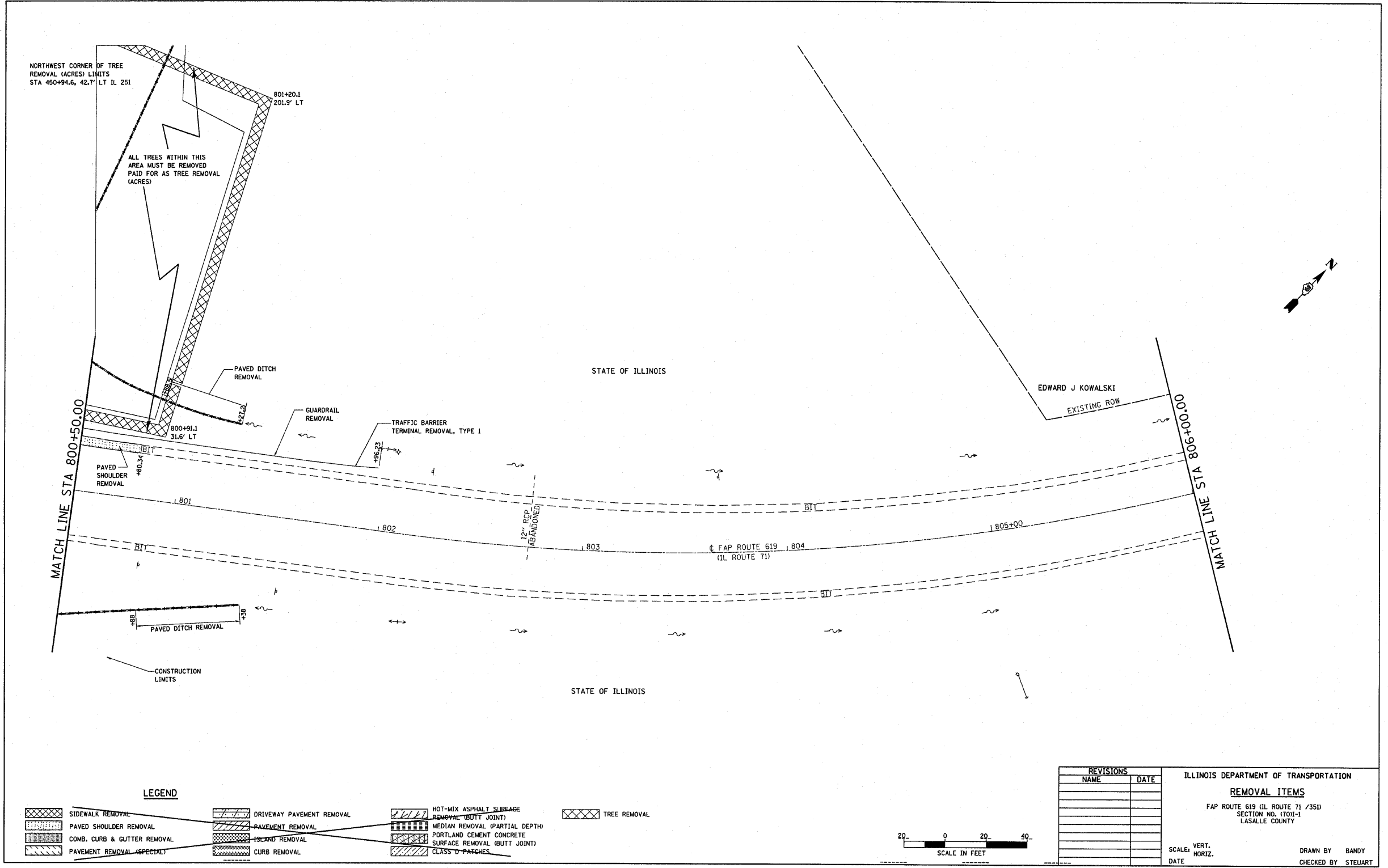
REMOVAL ITEMS

FAP ROUTE 619 (IL ROUTE 71 / 351)
SECTION NO. (701-1)
LASALLE COUNTY

SCALE: VERT. _____
HORIZ. _____
DATE _____

DRAWN BY BANDY
CHECKED BY STEUART

REMOVAL ITEMS, FAP ROUTE 619 (IL 71) STA. 795+00.00 TO STA. 800+50.00



NORTHWEST CORNER OF TREE
REMOVAL (ACRES) LIMITS
STA 450+94.6, 42.7' LT IL 251

ALL TREES WITHIN THIS
AREA MUST BE REMOVED
PAID FOR AS TREE REMOVAL
(ACRES)

801+20.1
201.9' LT

PAVED DITCH
REMOVAL

GUARDRAIL
REMOVAL

TRAFFIC BARRIER
TERMINAL REMOVAL, TYPE 1

MATCH LINE STA 800+50.00

PAVED SHOULDER
REMOVAL

800+91.1
31.6' LT

PAVED DITCH
REMOVAL

CONSTRUCTION
LIMITS

STATE OF ILLINOIS

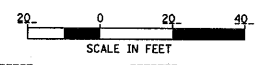
EDWARD J KOWALSKI
EXISTING ROW

MATCH LINE STA 806+00.00

STATE OF ILLINOIS

FAP ROUTE 619 / 804
(IL ROUTE 71)

LEGEND	
	SIDEWALK REMOVAL
	PAVED SHOULDER REMOVAL
	COMB. CURB & GUTTER REMOVAL
	PAVEMENT REMOVAL (SPECIAL)
	DRIVEWAY PAVEMENT REMOVAL
	PAVEMENT REMOVAL
	PORTLAND REMOVAL
	CURB REMOVAL
	HOT-MIX ASPHALT SUBBASE REMOVAL (BUTT JOINT)
	MEDIAN REMOVAL (PARTIAL DEPTH)
	PORTLAND CEMENT CONCRETE SURFACE REMOVAL (BUTT JOINT)
	CLASS 'D' PATCHES
	TREE REMOVAL

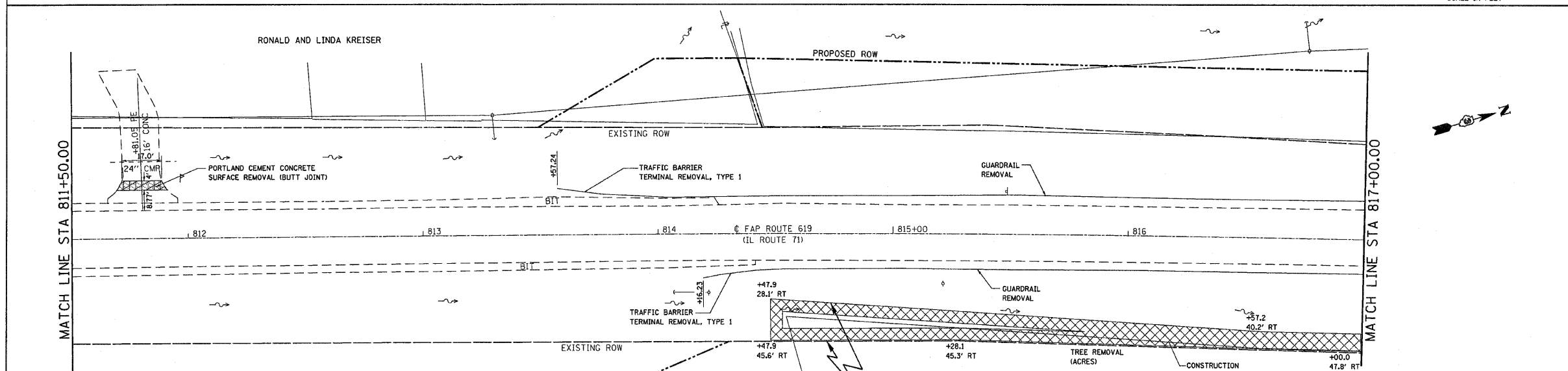
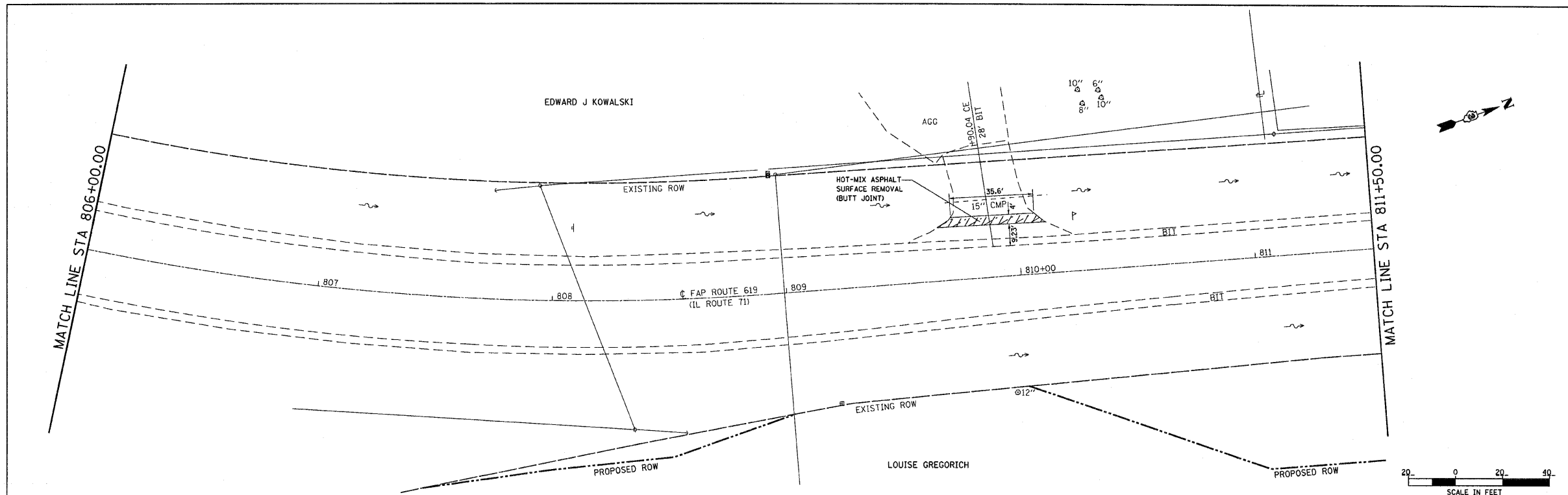


REVISIONS	
NAME	DATE

ILLINOIS DEPARTMENT OF TRANSPORTATION
REMOVAL ITEMS
FAP ROUTE 619 (IL ROUTE 71 / 351)
SECTION NO. 1701-1
LASALLE COUNTY
SCALE: VERT. _____
DATE _____ HORIZ. _____
DRAWN BY BANDY
CHECKED BY STEUART

REMOVAL ITEMS, FAP ROUTE 619 (IL 71) STA. 800+50+00.00 TO STA. 806+00.00

FILE NAME =	USER NAME = braboypc	DESIGNED -	REVISD -	STATE OF ILLINOIS DEPARTMENT OF TRANSPORTATION	TREE REMOVAL PLAN SHEETS	F.A. RTE. =	SECTION	COUNTY	TOTAL SHEETS	SHEET NO.
c:\pwork\pwork\braboypc\0240662\0365A71-shits-plindgn	PLOT SCALE = 50.0000' / IN.	DRAWN -	REVISD -			619	(701)-1	LASALLE	11	5
PLOT DATE = Sep 24, 2010 - 07:47:07 AM	DATE -	CHECKED -	REVISD -			CONTRACT NO. 66811				
						ILLINOIS FED. AID PROJECT				



LEGEND

	SIDEWALK REMOVAL		DRIVEWAY PAVEMENT REMOVAL		HOT-MIX ASPHALT SURFACE REMOVAL (BUTT JOINT)		TREE REMOVAL
	PAVED SHOULDER REMOVAL		PAVEMENT REMOVAL		MEDIAN REMOVAL (PARTIAL DEPTH)		
	COMB. CURB & GUTTER REMOVAL		ISLAND REMOVAL		PORTLAND CEMENT CONCRETE SURFACE REMOVAL (BUTT JOINT)		
	PAVEMENT REMOVAL (SPECIAL)		CURB REMOVAL		CLASS D PATCHES		

ALL TREES WITHIN THIS AREA MUST BE REMOVED PAID FOR AS TREE REMOVAL (ACRES)

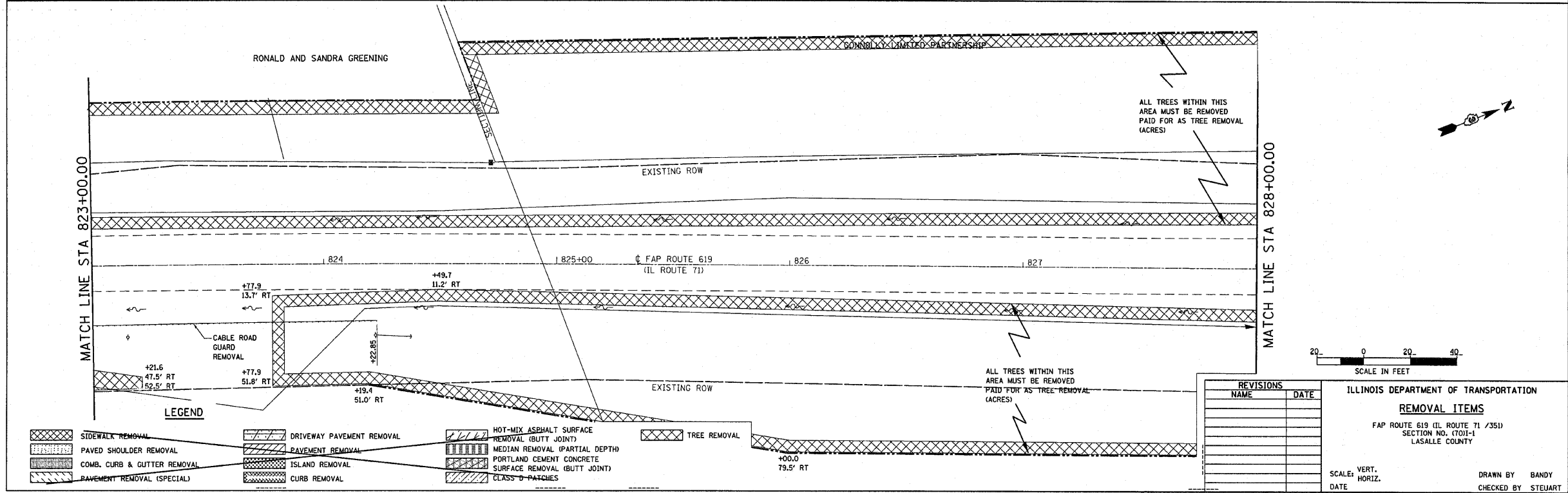
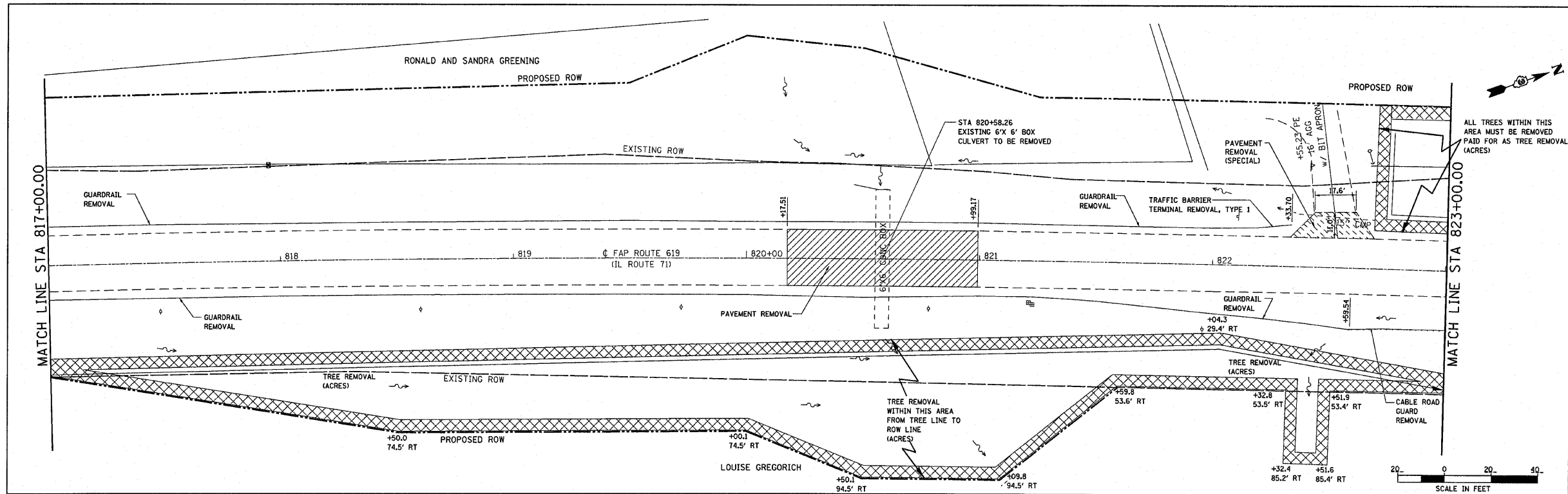
REVISIONS	
NAME	DATE

ILLINOIS DEPARTMENT OF TRANSPORTATION
REMOVAL ITEMS
 FAP ROUTE 619 (IL ROUTE 71 / 351)
 SECTION NO. 1701-1
 LASALLE COUNTY

SCALE: VERT. _____
 HORIZ. _____

DATE _____ DRAWN BY BANDY
 CHECKED BY STEUART

REMOVAL ITEMS, FAP ROUTE 619 (IL 71) STA. 806+00.00 TO STA. 817+00.00



LEGEND

	STWALK REMOVAL		DRIVEWAY PAVEMENT REMOVAL		HOT-MIX ASPHALT SURFACE REMOVAL (BUTT JOINT)		TREE REMOVAL
	PAVED SHOULDER REMOVAL		PAVEMENT REMOVAL		MEDIAN REMOVAL (PARTIAL DEPTH)		
	COMB. CURB & GUTTER REMOVAL		ISLAND REMOVAL		PORTLAND CEMENT CONCRETE SURFACE REMOVAL (BUTT JOINT)		
	PAVEMENT REMOVAL (SPECIAL)		CURB REMOVAL		CLASS 'D' PATCHES		

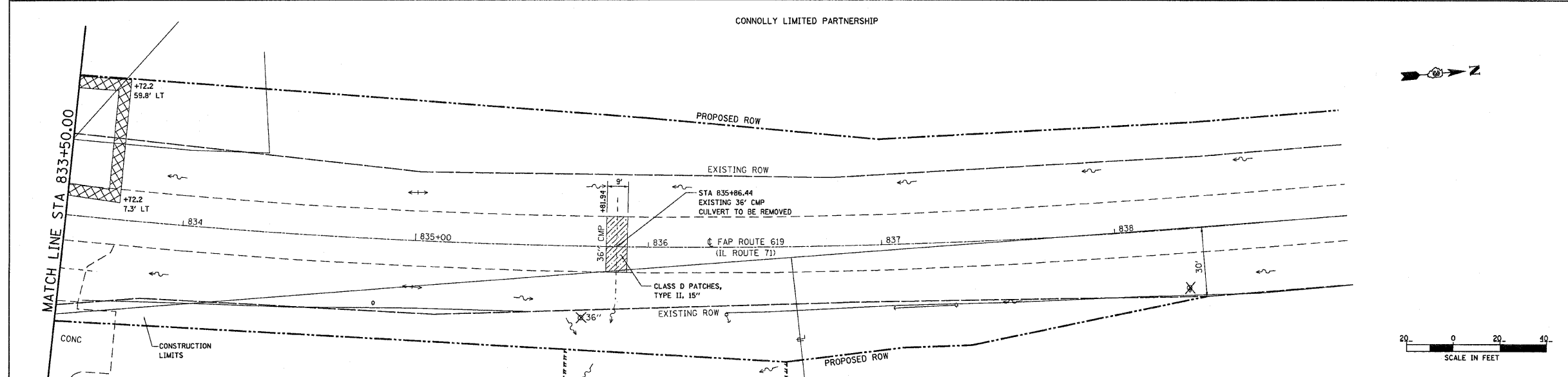
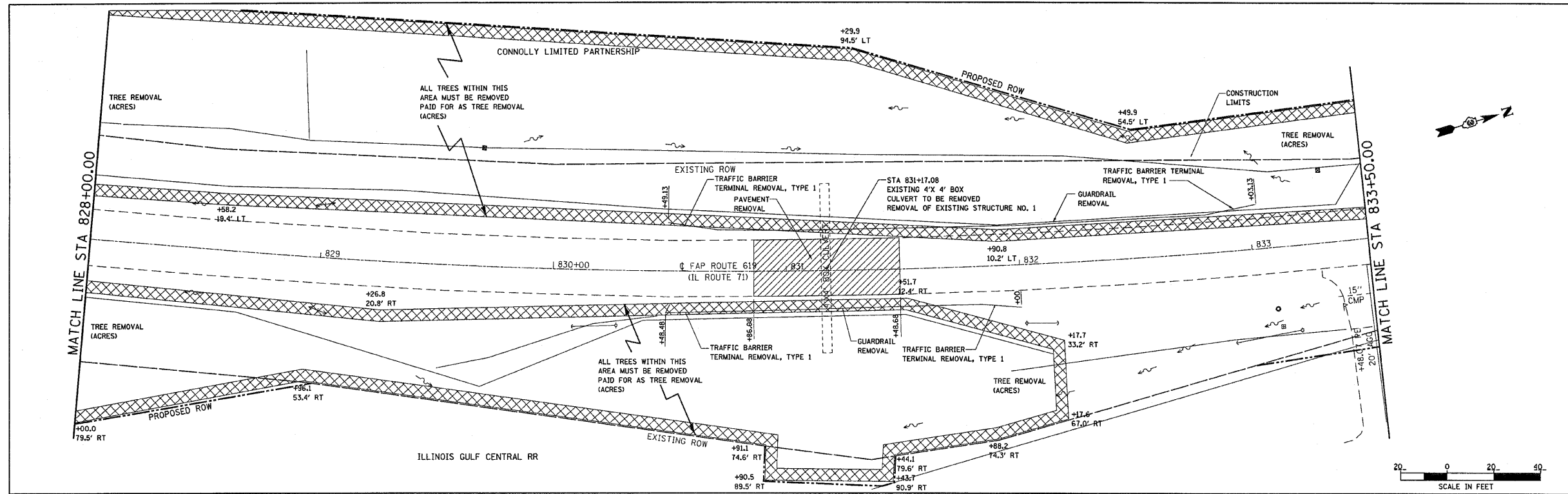
REVISIONS	
NAME	DATE

ILLINOIS DEPARTMENT OF TRANSPORTATION
REMOVAL ITEMS
 FAP ROUTE 619 (IL ROUTE 71 / 351)
 SECTION NO. (70)I-1
 LASALLE COUNTY

SCALE: VERT. _____
 DATE _____ HORIZ. _____

DRAWN BY BANDY
 CHECKED BY STEUART

REMOVAL ITEMS, FAP ROUTE 619 (IL 71) STA. 817+00.00 TO STA. 828+00.00



LEGEND

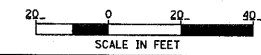
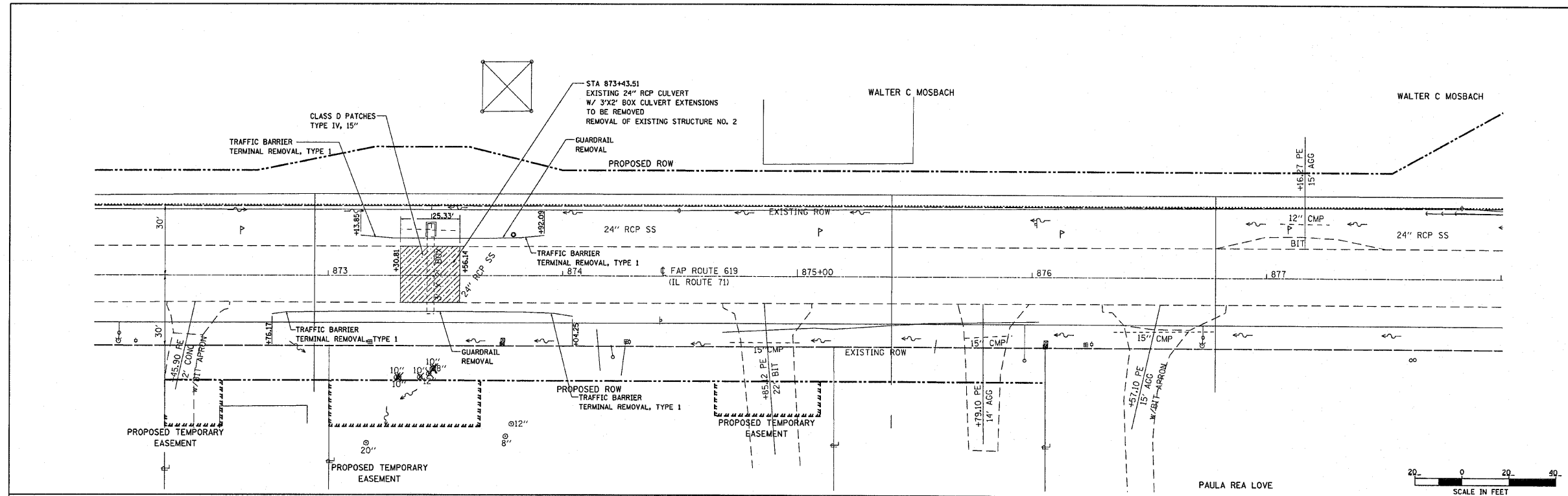
	SIDEWALK REMOVAL		DRIVEWAY PAVEMENT REMOVAL		HOT MIX ASPHALT SURFACE REMOVAL (BUTT JOINT)		TREE REMOVAL
	PAVED SHOULDER REMOVAL		PAVEMENT REMOVAL		MEDIAN REMOVAL (PARTIAL DEPTH)		
	COMB. CURB & GUTTER REMOVAL		ISLAND REMOVAL		PORTLAND CEMENT CONCRETE SURFACE REMOVAL (BUTT JOINT)		
	PAVEMENT REMOVAL (SPECIAL)		CURB REMOVAL		CLASS D PATCHES		

REVISIONS	
NAME	DATE

ILLINOIS DEPARTMENT OF TRANSPORTATION
REMOVAL ITEMS
 FAP ROUTE 619 (IL ROUTE 71 /351)
 SECTION NO. (701-1)
 LASALLE COUNTY

SCALE: VERT. _____
 HORIZ. _____
 DATE _____

DRAWN BY BANDY
 CHECKED BY STEUART



LEGEND

- SIDEWALK REMOVAL
- DRIVEWAY PAVEMENT REMOVAL
- HOT-MIX ASPHALT SURFACE REMOVAL (BUTT JOINT)
- TREE REMOVAL
- PAVED SHOULDER REMOVAL
- PAVEMENT REMOVAL
- MEDIAN REMOVAL (PARTIAL DEPTH)
- PORTLAND CEMENT CONCRETE SURFACE REMOVAL (BUTT JOINT)
- COMB. CURB & GUTTER REMOVAL
- ISLAND REMOVAL
- GLASS D PATCHES
- PAVEMENT REMOVAL (SPECIAL)
- CURB REMOVAL

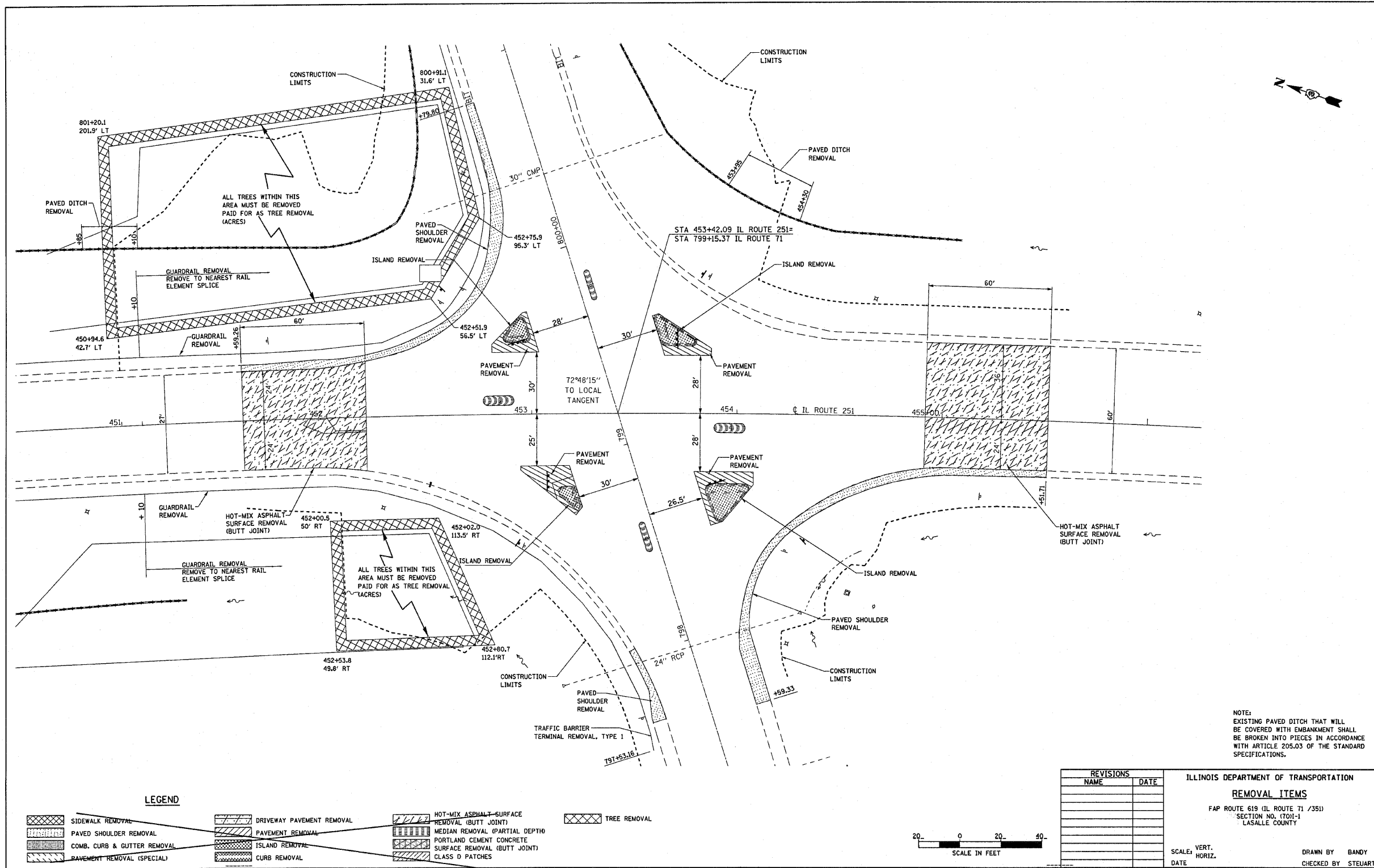
REVISIONS	
NAME	DATE

ILLINOIS DEPARTMENT OF TRANSPORTATION
REMOVAL ITEMS
 FAP ROUTE 619 (IL ROUTE 71 /351)
 SECTION NO. (70)I-1
 LASALLE COUNTY

SCALE: VERT. _____
 HORIZ. _____
 DATE _____

DRAWN BY BANDY
 CHECKED BY STEUART

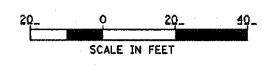
REMOVAL ITEMS, FAP ROUTE 619 (IL 71) STA. 872+00.00 TO STA. 883+50.00



NOTE:
EXISTING PAVED DITCH THAT WILL
BE COVERED WITH EMBANKMENT SHALL
BE BROKEN INTO PIECES IN ACCORDANCE
WITH ARTICLE 205.03 OF THE STANDARD
SPECIFICATIONS.

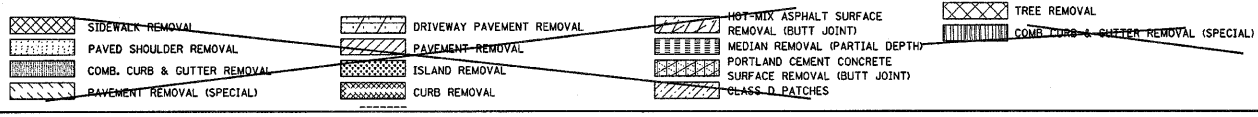
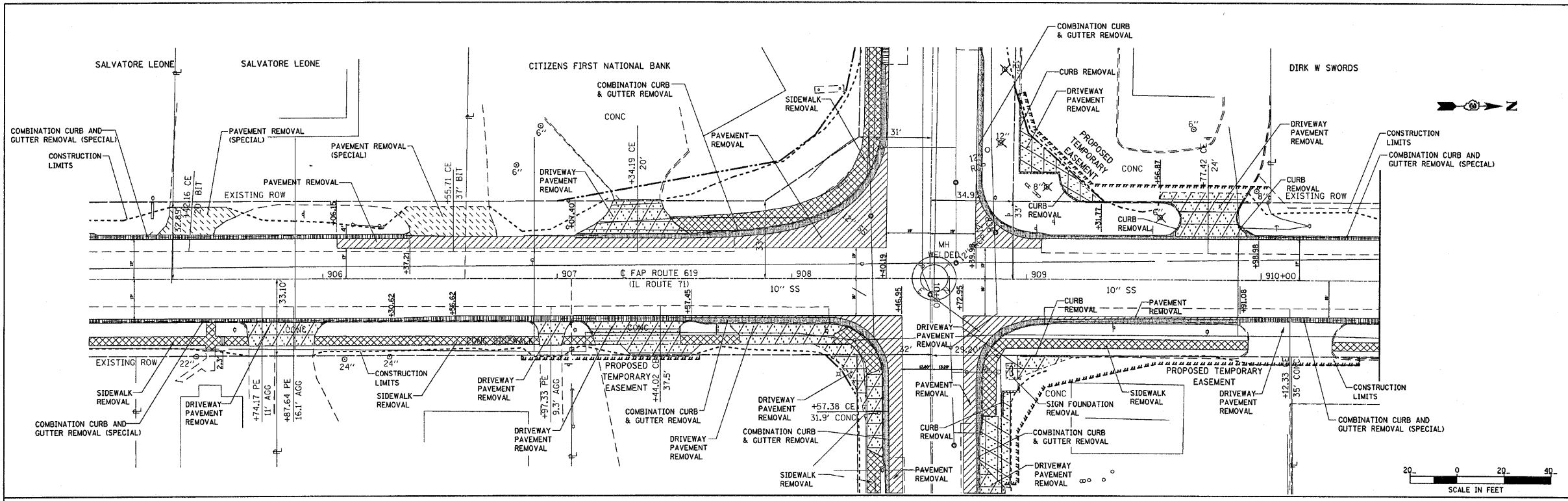
LEGEND			
	SIDEWALK REMOVAL		DRIVEWAY PAVEMENT REMOVAL
	PAVED SHOULDER REMOVAL		PAVEMENT REMOVAL
	COMB. CURB & GUTTER REMOVAL		ISLAND REMOVAL
	PAVEMENT REMOVAL (SPECIAL)		CURB REMOVAL
	HOT-MIX ASPHALT SURFACE REMOVAL (BUTT JOINT)		MEDIAN REMOVAL (PARTIAL DEPTH)
	PORTLAND CEMENT CONCRETE SURFACE REMOVAL (BUTT JOINT)		CLASS D PATCHES
	TREE REMOVAL		

REVISIONS		ILLINOIS DEPARTMENT OF TRANSPORTATION	
NAME	DATE	REMOVAL ITEMS	
		FAP ROUTE 619 (IL ROUTE 71 /351)	
		SECTION NO. (701)-1	
		LASALLE COUNTY	
		SCALE: VERT.	DRAWN BY BANDY
		DATE	CHECKED BY STEUART



REMOVAL ITEMS, IL ROUTE 251 STA. 451+00.00 TO STA. 456+00.00

FILE NAME =	USER NAME = braboypc	DESIGNED -	REVISED -	STATE OF ILLINOIS DEPARTMENT OF TRANSPORTATION	TREE REMOVAL PLAN SHEETS	F.A. RTE.	SECTION	COUNTY	TOTAL SHEETS	SHEET NO.	
		DRAWN -	REVISED -			619	(701)-1	LASALLE	11	10	
		CHECKED -	REVISED -			SCALE: _____ SHEET NO. _____ OF _____ SHEETS STA. _____ TO STA. _____		CONTRACT NO. 66871		ILLINOIS FED. AID PROJECT	
		DATE -	REVISED -								



REVISIONS		ILLINOIS DEPARTMENT OF TRANSPORTATION	
NAME	DATE	REMOVAL ITEMS	
		FAP ROUTE 619 (IL ROUTE 71 / 351)	
		SECTION NO. (70)-1	
		LASALLE COUNTY	
		SCALE: VERT.	DRAWN BY
		DATE	CHECKED BY

REMOVAL ITEMS, FAP ROUTE 619 (IL 71) STA. 905+00.00 TO STA. 915+00.00

FILE NAME =	USER NAME = braboygc	DESIGNED -	REVISED -	STATE OF ILLINOIS DEPARTMENT OF TRANSPORTATION	TREE REMOVAL PLAN SHEETS	F.A. RTE. =	SECTION	COUNTY	TOTAL SHEETS	SHEET NO.	
		DRAWN -	REVISED -			619	(70)-1	LASALLE	11	11	
		CHECKED -	REVISED -			CONTRACT NO. 66871		ILLINOIS FED. AID PROJECT			
		DATE	REVISED			SCALE: _____	SHEET NO. _____ OF _____ SHEETS	STA. _____ TO STA. _____			