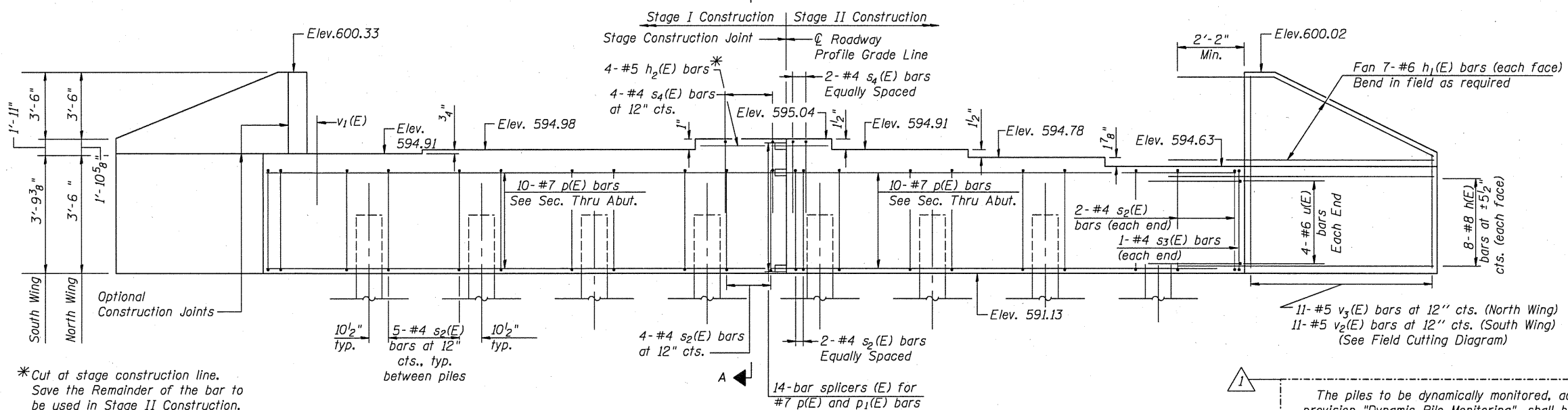


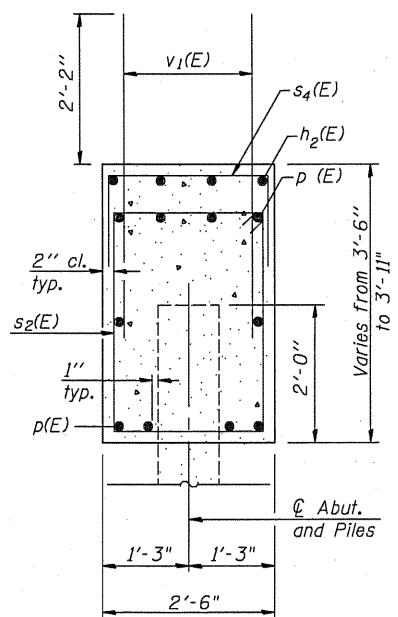
STATE OF ILLINOIS  
DEPARTMENT OF TRANSPORTATION

Notes:  
Four steps monolithically with cap.



\*Cut at stage construction line.  
Save the Remainder of the bar to be used in Stage II Construction.

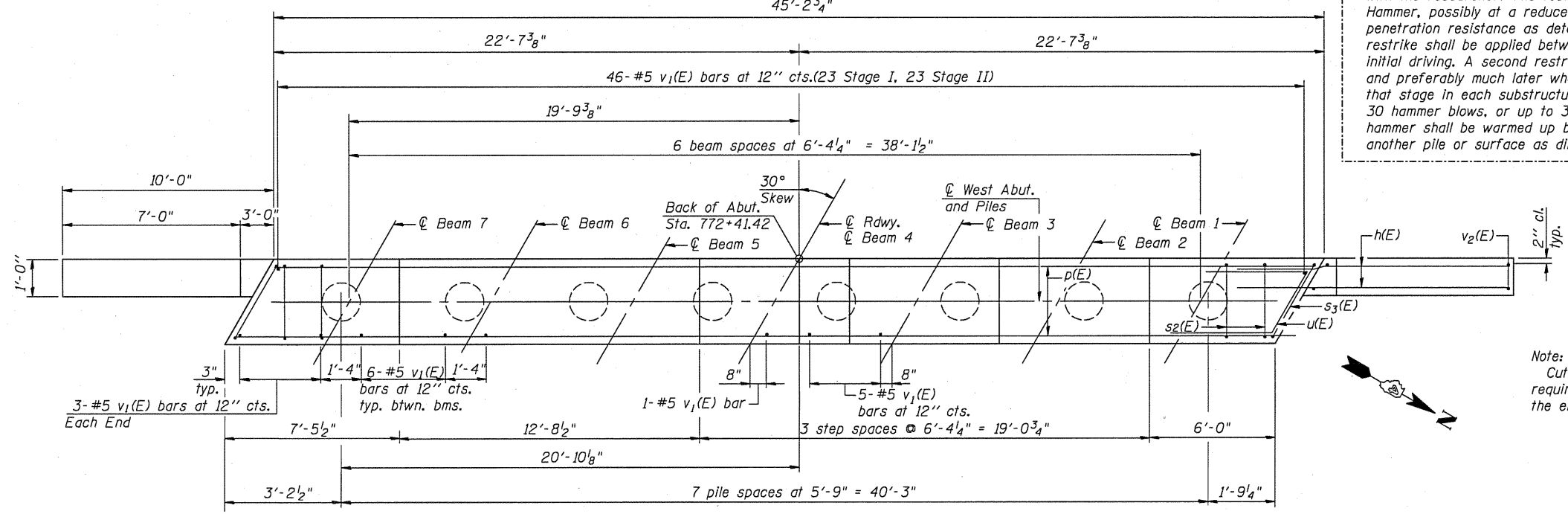
The piles to be dynamically monitored, according to the special provision "Dynamic Pile Monitoring", shall be the test piles specified at each of the substructure units. The scheduling of the test pile driving (initial and restrikes) shall be coordinated with the researcher. The test pile shall be driven with a Diesel Hammer, possibly at a reduced fuel setting, to a minimal penetration resistance as determined by the researcher. A restrike shall be applied between 1 and 24 hours after end of initial driving. A second restrike shall occur at least 7 days later and preferably much later when production piling is completed for that stage in each substructure. Restrikes will consist of up to 30 hammer blows, or up to 3 inches of pile penetration. The hammer shall be warmed up before restriking the test pile on another pile or surface as directed by the researcher.



**BILL OF MATERIAL**

Bar	No.	Size	Length	Shape
$h(E)$	32	#8	16'-0"	—
$h_1(E)$	28	#6	13'-11"	—
$h_2(E)$	4	#5	6'-0"	—
$p(E)$	20	#7	23'-8"	—
$s_2(E)$	42	#4	11'-5"	□
$s_3(E)$	2	#4	12'-1"	□
$s_4(E)$	6	#4	6'-6"	□
$u(E)$	8	#6	8'-5"	┘
$v_1(E)$	88	#5	4'-4"	—
$v_2(E)$	11	#5	14'-2"	—
$v_3(E)$	11	#5	13'-6"	—
Structure Excavation		Cu. Yd.	158	
Concrete Structures		Cu. Yd.	20	
Reinforcement Bars, Epoxy Coated		Pound	4,130	
Furnishing Metal Shell Piles 14x0.250		Foot	196	
Driving Piles		Foot	196	
Test Pile Metal Shells		Each	1	
Pile Shoes		Each	8	

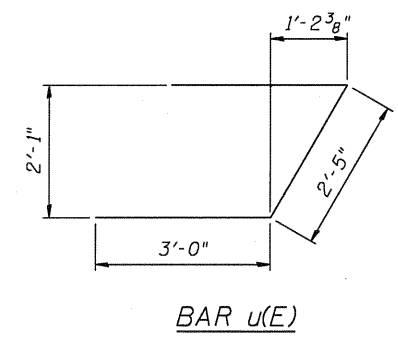
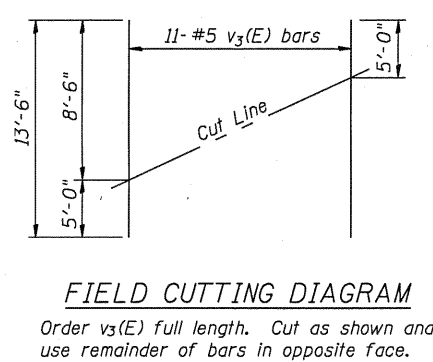
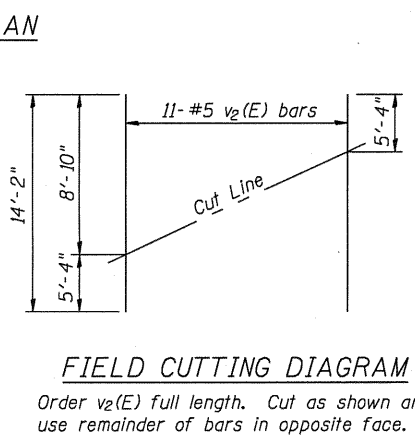
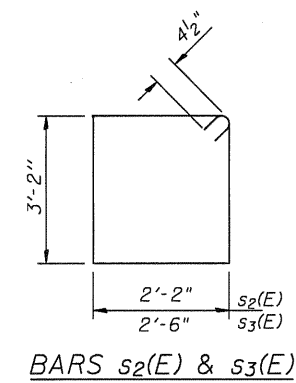
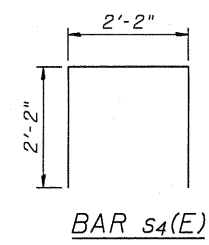
For details of Bar Splicers, see sheet 19 of 22.  
For details of piles see sheet 17 of 22.



Note:  
Cut  $p(E)$  bars in field as required and as directed by the engineer.

**PILE DATA**

Type & Size: Metal Shell - 14" dia. x 0.25" walls with Pile Shoes  
Nominal Required Bearing: 416 kips  
Factored Resistance Available: 208 kips  
Est. Length: 28  
No. Production Piles: 7  
No. Test Piles: 1



**WEST ABUTMENT DETAILS**  
S.N. 090-0177  
STRAND ASSOCIATES, INC.

DESIGNED	RRD
CHECKED	AJS
DRAWN	KAS
CHECKED	AJS

SHEET NO. 15	F.A.P. RTE. 693	SECTION (119 BR-2)BR	COUNTY TAZEWELL	TOTAL SHEETS 65	SHEET NO. 32
22 SHEETS	FED. ROAD DIST. NO. ILLINOIS FED. AID PROJECT		CONTRACT NO. 68660		