

STATE OF ILLINOIS
DEPARTMENT OF TRANSPORTATION
DIVISION OF HIGHWAYS

**PROPOSED
HIGHWAY PLANS**

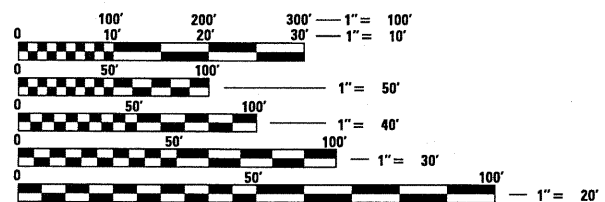
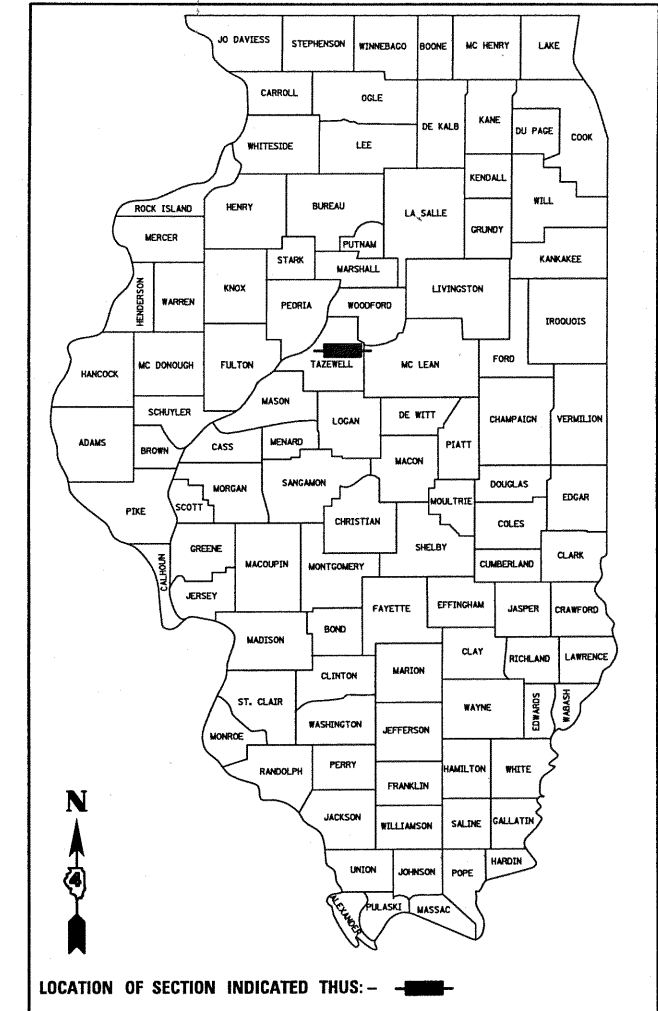
F.A.P. ROUTE 693 (IL 9)
SECTION (119 BR-2)BR
PROJECT ACF-ARRA-0693(065)
BRIDGE REPLACEMENT
IL 9 OVER MACKINAW RIVER TRIBUTARY
TAZEWELL COUNTY
C-94-197-06

F.A.P. RTE.	SECTION	COUNTY	TOTAL SHEETS	SHEET NO.
693	(119 BR-2)BR	TAZEWELL	65	1
FED. ROAD DIST. NO. 4	ILLINOIS	CONTRACT NO. 68660		

*65+1 = 66

D-94-129-06

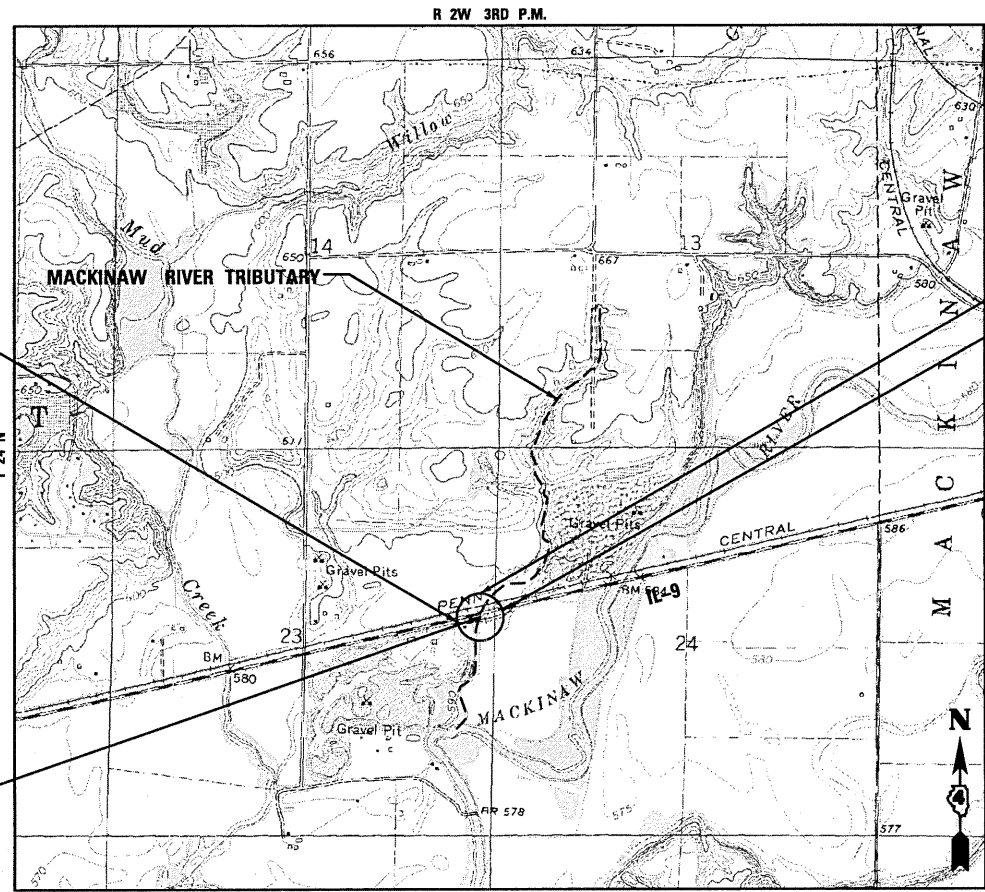
FOR INDEX OF SHEETS, SEE SHEET NO. 2



FULL SIZE PLANS HAVE BEEN PREPARED USING STANDARD ENGINEERING SCALES. REDUCED SIZED PLANS WILL NOT CONFORM TO STANDARD SCALES. IN MAKING MEASUREMENTS ON REDUCED PLANS, THE ABOVE SCALES MAY BE USED.

J.U.L.I.E.
JOINT UTILITY LOCATION INFORMATION FOR EXCAVATION
1-800-892-0123
OR 811

PROJECT DESCRIPTION
REMOVE AND REPLACE THE EXISTING STRUCTURE WITH SINGLE SPAN 54" PPC I-BEAM BRIDGE ON OPEN ABUTMENTS EXIST. S.N. 090-0064 PROP. S.N. 090-0177 AT STA. 772+88.16



BEGIN PROJECT STA. 768+90

PROJECT LOCATION

END PROJECT STA. 778+90

SCALE = 1" = .25 MILE

GROSS PROJECT LENGTH = 1000 FEET (0.189 MI)
NET PROJECT LENGTH = 1000 FEET (0.189 MI)



STATE OF ILLINOIS
DEPARTMENT OF TRANSPORTATION
DIVISION OF HIGHWAYS

SUBMITTED Aug 14 2010

DEPUTY DIRECTOR OF HIGHWAYS, REGION ENGINEER
October 11 2010
Scott E. Still P.E./e
ENGINEER OF DESIGN AND ENVIRONMENT

October 20 2010
Christine M. Reed/e
DIRECTOR OF HIGHWAYS, CHIEF ENGINEER



PRINTED BY THE AUTHORITY OF THE STATE OF ILLINOIS

PROJECT ENGINEER: MR. CHRIS MAUSHARD (309) 671-3453
PROJECT CONSULTANT LIAISON ENGINEER: MR. SOBHI LABABIDI (309) 671-3460
CONTRACT NO. 68660
CATALOG NO. 033404-00D