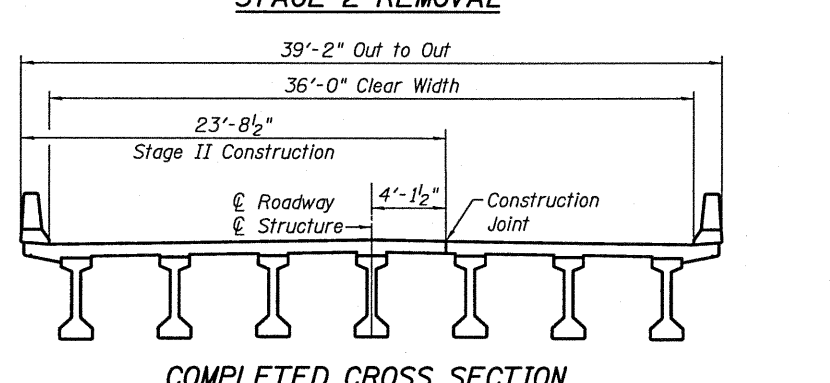
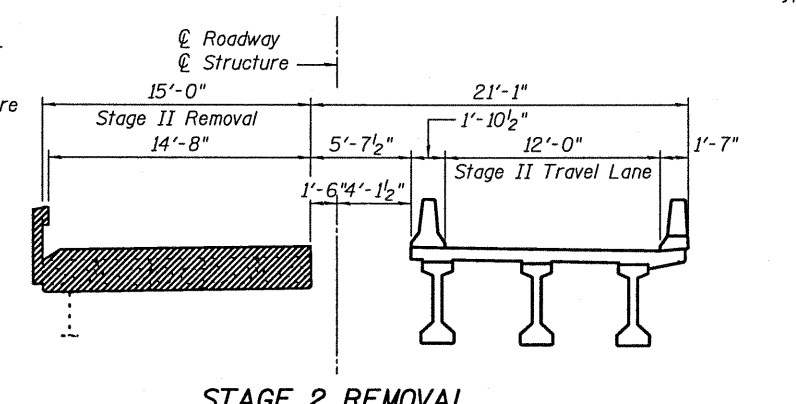
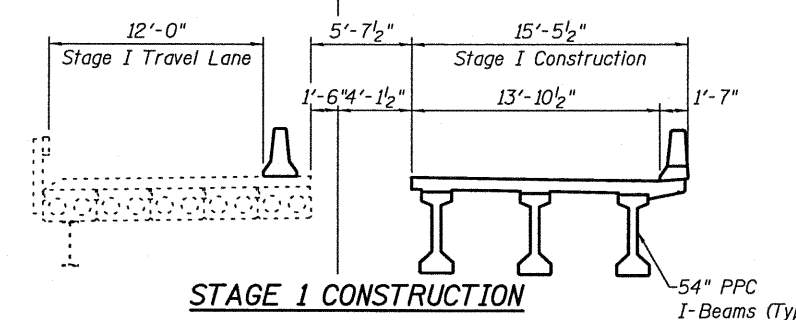
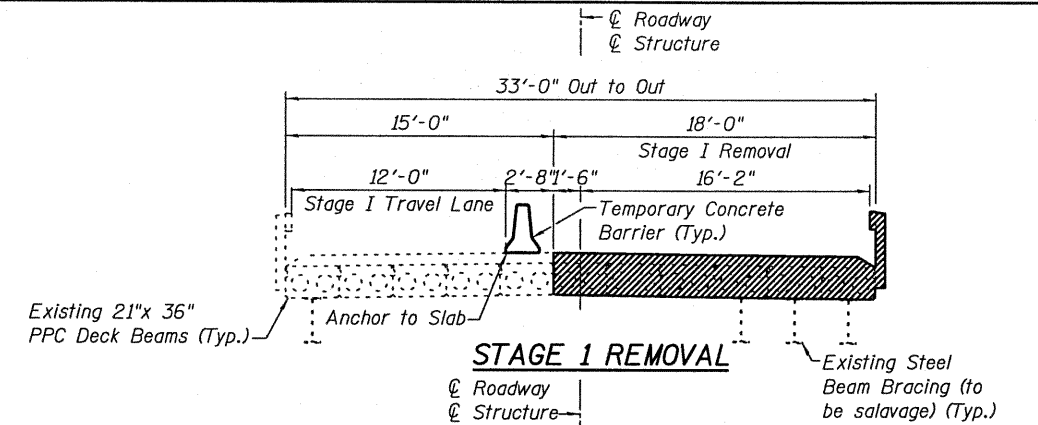


TOTAL BILL OF MATERIAL

ITEM	UNIT	SUPER	SUB	TOTAL
Porous Granular Embankment, Special	CU YD	-	240	240
Stone Riprap, Class A5	SQ YD	-	980	980
Filter Fabric	SQ YD	-	980	980
Removal of Existing Structures	EACH	-	1	1
Structure Excavation	CU YD	-	317	317
Concrete Structures	CU YD	-	68	68
Concrete Superstructure	CU YD	287	-	287
Bridge Deck Grooving	SQ YD	580	-	580
Protective Coat	SQ YD	714	23	737
Furnishing and Erecting Precast Prestressed Concrete I-Beams, 54 In.	FOOT	642	-	642
Reinforcement Bars, Epoxy Coated	POUND	56,320	13,220	69,540
Bar Splicers	EACH	369	28	397
Furnishing Metal Shell Piles 14x0.250	FOOT	-	385	385
Driving Piles	FOOT	-	385	385
Test Pile Metal Shells	EACH	-	2	2
Pile Shoes	EACH	-	16	16
Name Plates	EACH	1	-	1
Geocomposite Wall Drain	SQ YD	-	84	84
Pipe Underdrains for Structures 4"	FOOT	-	177	177
Temporary Soil Retention System	SQ FT	-	891	891
Temporary Support System	EACH	-	2	2

STATE OF ILLINOIS
DEPARTMENT OF TRANSPORTATION

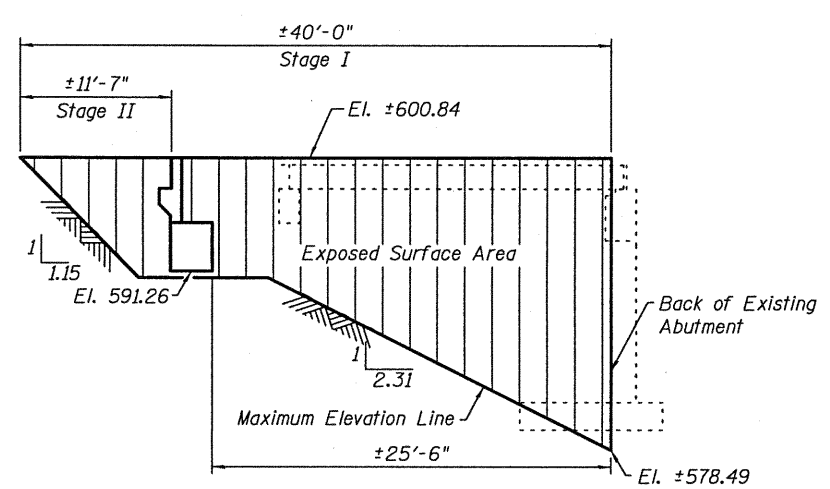


LEGEND
 Removal of Existing Structures
 Proposed Concrete

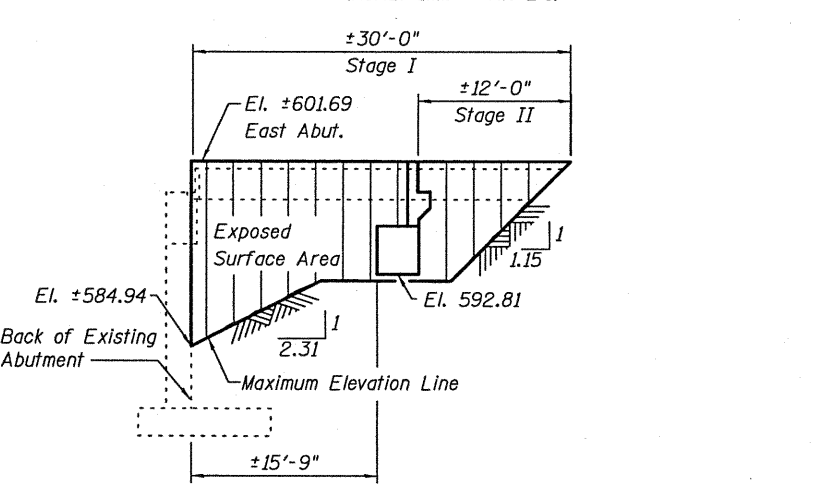
Note:
 All cross sections are looking East.
 All existing approach structures to be removed as directed by the engineer. Cost included in Removal of Existing Structures.

BILL OF MATERIALS AND SUGGESTED STAGE CONSTRUCTION
S.N. 090-0177
STRAND ASSOCIATES, INC.

SHEET NO. 2	F.A.P. RTE.	SECTION	COUNTY	TOTAL SHEETS	SHEET NO.
	693	(119 BR-2)BR	TAZEWELL	65	19
22 SHEETS	FED. ROAD DIST. NO. ILLINOIS FED. AID PROJECT		CONTRACT NO. 68660		



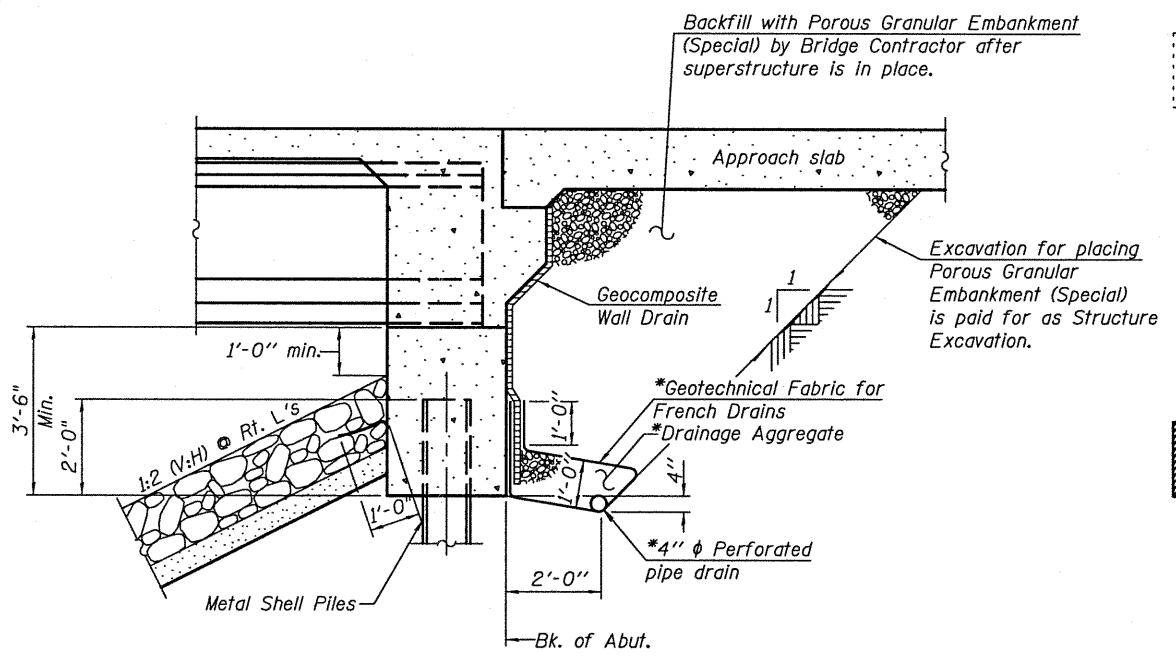
WEST ABUTMENT
TEMPORARY SOIL RETENTION SYSTEM
 (Horiz. dim. • Rt. L's)



EAST ABUTMENT
TEMPORARY SOIL RETENTION SYSTEM
 (Horiz. dim. • Rt. L's)

Note:
 A cantilevered sheet piling design does not appear feasible and additional members or other retention systems may be necessary. The Contractor shall submit a temporary soil retention system design including plan details and calculations for review and acceptance by the Engineer.

DESIGNED	RRD
CHECKED	AJS
DRAWN	KAS
CHECKED	AJS



SECTION THRU INTEGRAL ABUTMENT
 (Horiz. dim. • Rt. L's)

*Included in the cost of Pipe Underdrains for Structures.
 Note:
 All drainage system components shall extend to 2'-0" from the end of each wingwall except an outlet pipe shall extend until intersecting with the side slopes. The pipes shall drain into concrete headwalls. (See Article 601.05 of the Standard Specifications and Highway Standard 60110).