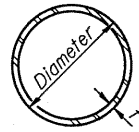
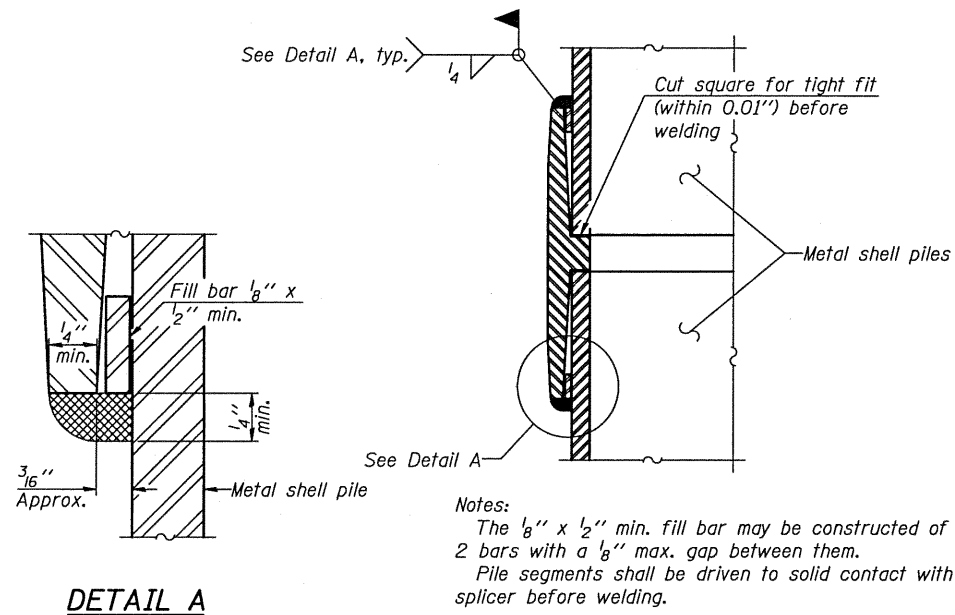


STATE OF ILLINOIS  
DEPARTMENT OF TRANSPORTATION



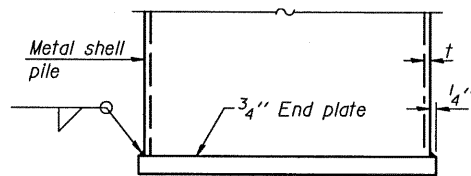
**METAL SHELL PILE TABLE**

Designation and outside diameter	Wall thickness t	Weight per foot (Lbs./ft.)	Inside volume (yd. <sup>3</sup> /ft.)
PP12	0.179"	22.60	0.0274
PP12	0.250"	31.37	0.0267
PP14	0.250"	36.71	0.0368
PP14	0.312"	45.61	0.0361

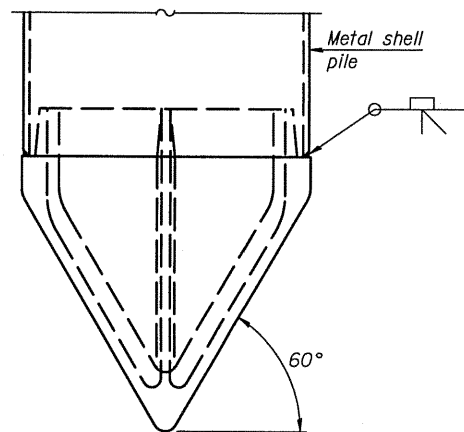


Notes:  
The  $\frac{1}{8}$ " x  $\frac{1}{2}$ " min. fill bar may be constructed of 2 bars with a  $\frac{1}{8}$ " max. gap between them.  
Pile segments shall be driven to solid contact with splicer before welding.

**WELDED COMMERCIAL SPLICE**



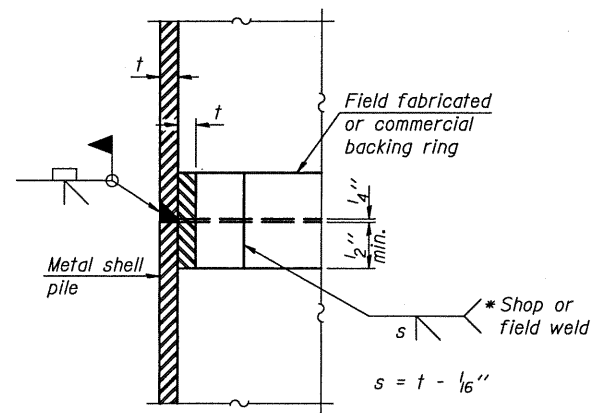
**END PLATE ATTACHMENT**



**METAL SHELL PILE SHOE ATTACHMENT**

(See Note A)

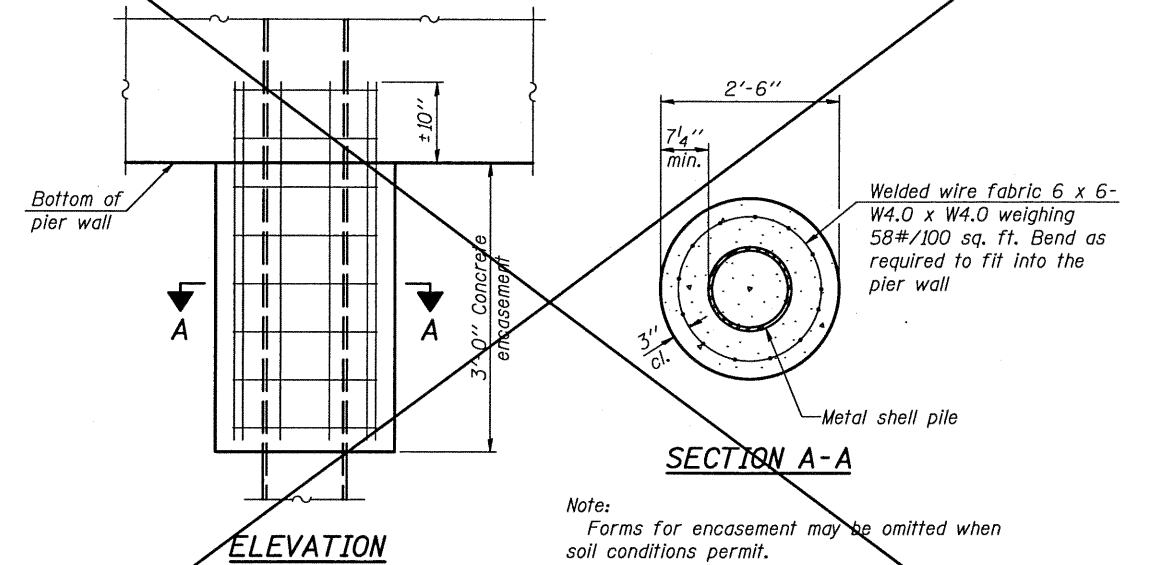
Note A:  
When called for on the plans, the Contractor shall furnish metal shell pile shoes consisting of a single piece conical pile point as shown. The pile shoes shall be cast in one piece steel according to either ASTM A 148 Grade 90-60 or AASHTO M 103 Grade 65-35 and shall provide full bearing over the full circumference of the metal shell pile. The pile shoe shall have tapered leads to assure proper alignment and fitting and shall be secured to the pile with a circumferential weld.



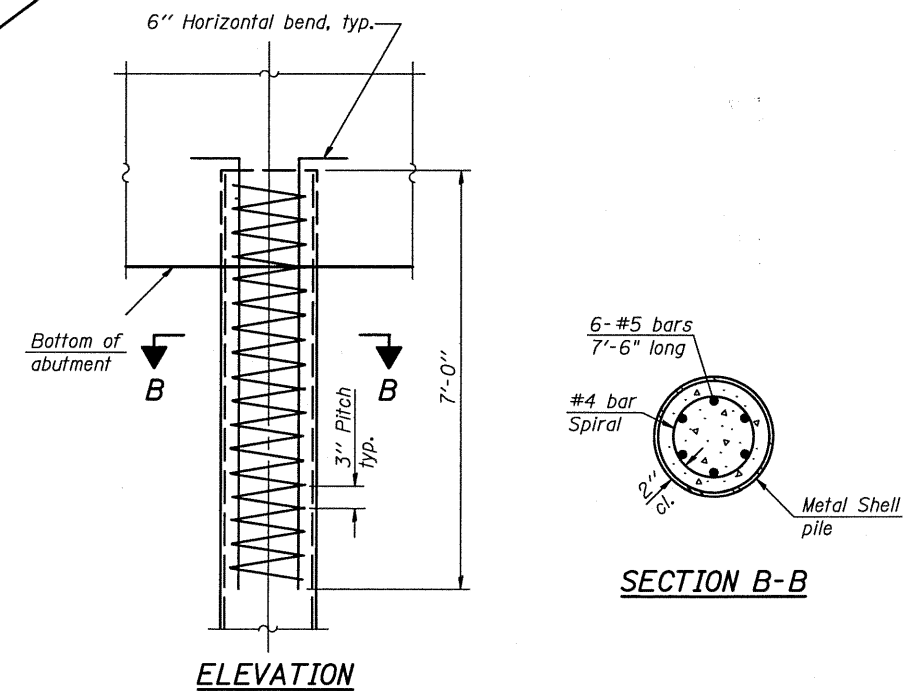
**COMPLETE PENETRATION WELD SPLICE**

\* Field fabricated backing ring may be made from pile shell by removing segment to allow reducing circumference and vertically rejoin with partial joint penetration weld.

Note:  
The metal shell piles shall be according to ASTM A 252 Grade 3.



**CONCRETE ENCASEMENT AT PIERS**



**METAL SHELL REINFORCEMENT AT ABUTMENTS**

DESIGNED	RRD
CHECKED	AJS
DRAWN	KAS
CHECKED	AJS

F-MS

10-1-08

SHEET NO. 17	F.A.P. RTE.	SECTION	COUNTY	TOTAL SHEETS	SHEET NO.
	693	(119 BR-2)BR	TAZEWELL	65	34
22 SHEETS	CONTRACT NO. 68660				
FED. ROAD DIST. NO.		ILLINOIS	FED. AID PROJECT		

**METAL SHELL PILE DETAILS**  
S.N. 090-0177  
STRAND ASSOCIATES, INC.