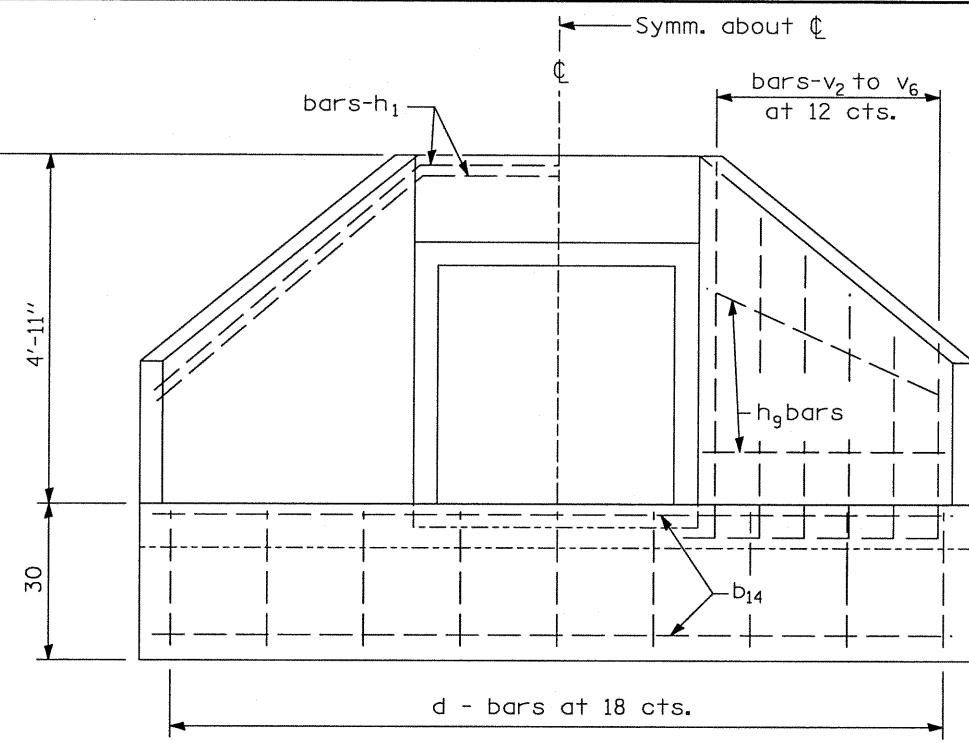
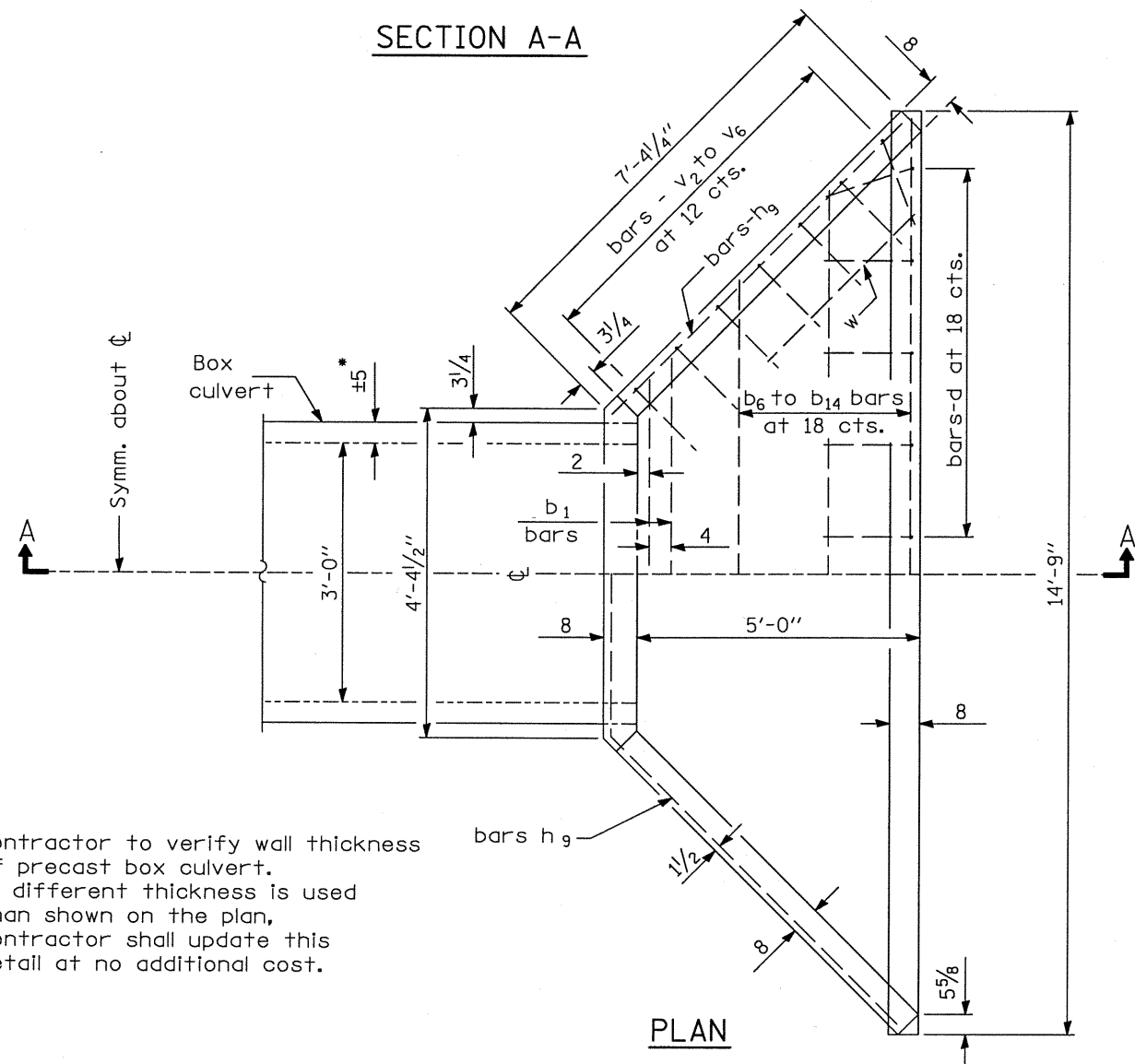


SECTION A-A



END ELEVATION



PLAN

* Contractor to verify wall thickness of precast box culvert. If different thickness is used than shown on the plan, contractor shall update this detail at no additional cost.

GENERAL NOTES

All slope ratios are expressed as units of vertical displacement to units of horizontal displacement (V:H).

All dimensions are in inches unless otherwise shown.

All work and materials to construct end section will be paid for as BOX CULVERT END SECTION.

REINFORCED CONCRETE END SECTIONS AT RIGHT ANGLES WITH ROADWAY

(Sheet 1 of 2)

FILE NAME = s:\p1\6388-6390\6346\015\m\corra\formal\plans\roadway\04-11R-deta1.dgn

STRAND
ENGINEERS
1170 SOUTH HOUBOLT ROAD
JOLIET, ILLINOIS 60431
(815) 744-4200

USER NAME = ryand	DESIGNED RRD	REVISED -
PLOT SCALE = 0:25.453 m / IN.	DRAWN RRD	REVISED -
PLOT DATE = 7/9/2010	CHECKED AJS	REVISED -
	DATE 3/31/10	REVISED -

STATE OF ILLINOIS
DEPARTMENT OF TRANSPORTATION

PROJECT SPECIFIC DETAILS

SCALE: AS SHOWN SHEET NO. OF SHEETS STA. TO STA.

F.A.P. RTE.	SECTION	COUNTY	TOTAL SHEETS	SHEET NO.
693	(119 BR-2)BR	TAZEWELL	65	40
CONTRACT NO. 68660				
FED. ROAD DIST. NO. 4 (ILLINOIS) FED. AID PROJECT				