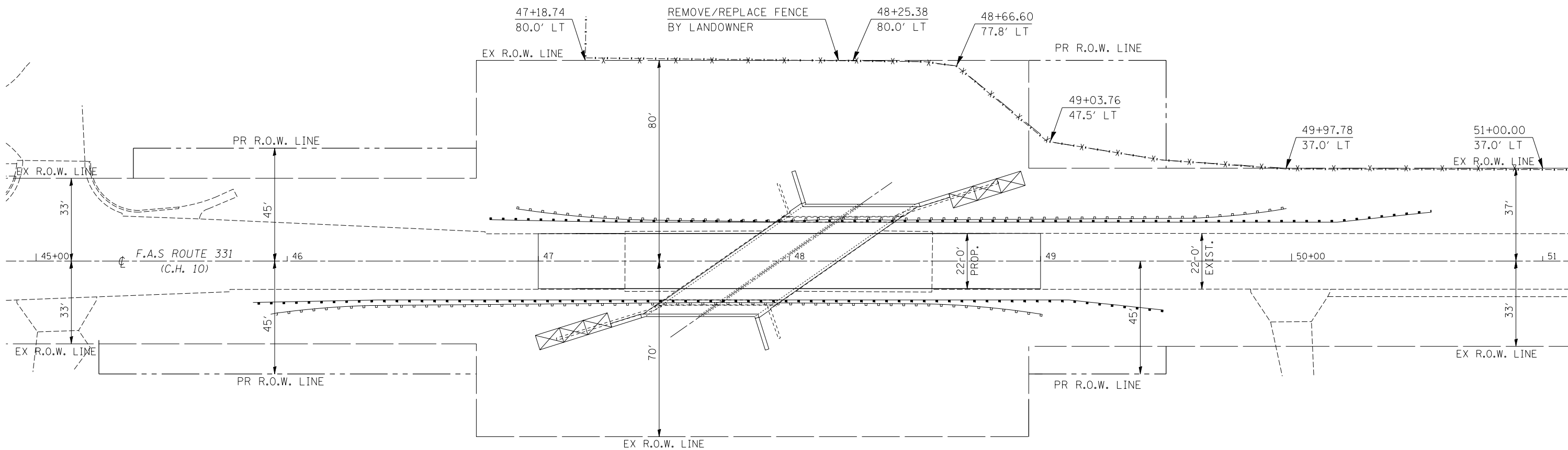


SCHEDULE OF QUANTITIES REMOVAL DETAILS



44000100 PAVEMENT REMOVAL

STATION	TO	STATION	LENGTH (FOOT)	WIDTH (FOOT)	AREA (SQ YD)
47+00.00		47+34.50	34.5	22.0	84.3
48+57.00		49+00.00	43.0	22.0	105.1
TOTAL =					189.4
USE =					190.0

50100100 REMOVAL EXISTING STRUCTURE

S. N.	092-0070	EACH
CENTERLINE STA 47+95.97		1.0
TOTAL =		1.0
USE =		1.0

44004000 PAVED DITCH REMOVAL

LOCATION	LENGTH (FOOT)	
LT STA 47+20 - 47+75 (SW DITCH)	55.0	
RT STA 48+20 - 48+75 (NE DITCH)	55.0	
TOTAL =		110.0
USE =		110.0

X0325129 TREE REMOVAL

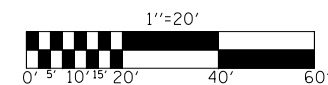
STATION	OFFSET	DIAMETER (UNIT)
49+75	37' LT	15.0
50+10	37' LT	15.0
TOTAL =		30.0
USE =		30.0

Z0004552 APPROACH SLAB REMOVAL

STATION	TO	STATION	AVG. LENGTH (FOOT)	WIDTH (FOOT)	AREA (SQ YD)
47+34.50		47+72.00	37.5	24.0	100.0
48+57.00		49+00.00	37.5	24.0	100.0
TOTAL =					200.0
USE =					200.0

XX006983 CLEARING

LOCATION	LENGTH (FOOT)	WIDTH (FOOT)	AREA (ACRE)
STA 48+95.32 - 49+50.00 (37' LT - 80' LT)	54.7	43.0	0.05
TOTAL =			0.05
USE =			0.10



FILE NAME = c:\pw_work\pwidot\blockrt\d0128383\p8p20.dgn	USER NAME = blockrt	DESIGNED - RTB	REVISED -
		DRAWN - JRP	REVISED -
		CHECKED -	REVISED -
		DATE - 06/2008	REVISED -

**STATE OF ILLINOIS
DEPARTMENT OF TRANSPORTATION**

SCHEDULE OF QUANTITIES REMOVAL DETAILS

SCALE: 1" = 20' SHEET NO. OF SHEETS STA. 45+00.00 TO STA. 51+00.00

F.A.S. RTE. 331	SECTION Z-BR	COUNTY VERMILION	TOTAL SHEETS 49	SHEET NO. 11
FED. ROAD DIST. NO. ILLINOIS FED. AID PROJECT			CONTRACT NO. 70016	