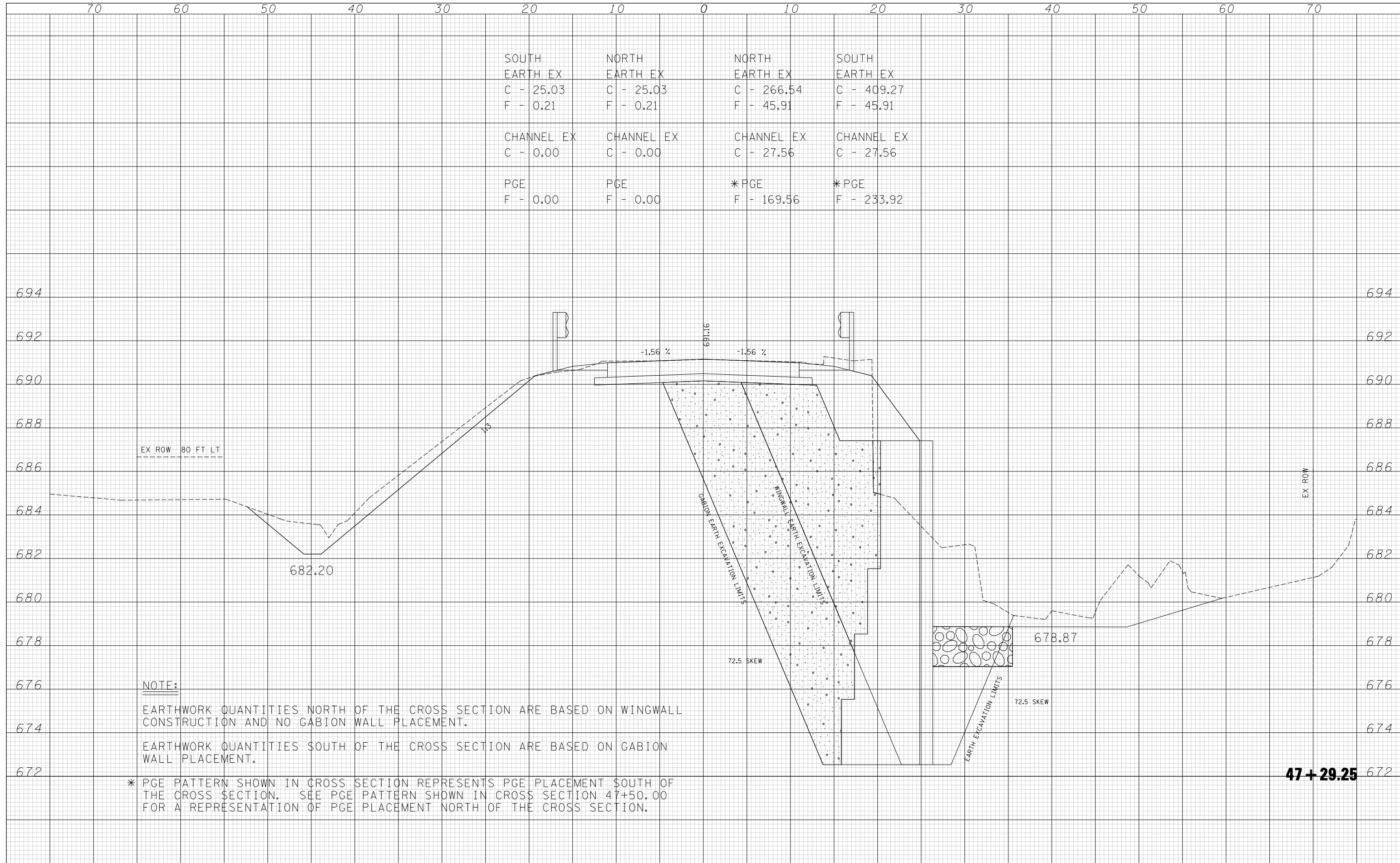


DATE	
BY	
FINAL SURVEY	
SURVEYED	
PLOTTED	
TEMPLATE	
AREAS CHECKED	
NOTE BOOK	
NO.	

DATE	
BY	
ORIGINAL SURVEY	
SURVEYED	
PLOTTED	
TEMPLATE	
AREAS CHECKED	
NOTE BOOK	
NO.	



SOUTH EARTH EX C - 25.03 F - 0.21	NORTH EARTH EX C - 25.03 F - 0.21	NORTH EARTH EX C - 266.54 F - 45.91	SOUTH EARTH EX C - 409.27 F - 45.91
CHANNEL EX C - 0.00	CHANNEL EX C - 0.00	CHANNEL EX C - 27.56	CHANNEL EX C - 27.56
PGE F - 0.00	PGE F - 0.00	*PGE F - 169.56	*PGE F - 233.92

**NOTE:**  
 EARTHWORK QUANTITIES NORTH OF THE CROSS SECTION ARE BASED ON WINGWALL CONSTRUCTION AND NO GABION WALL PLACEMENT.  
 EARTHWORK QUANTITIES SOUTH OF THE CROSS SECTION ARE BASED ON GABION WALL PLACEMENT.  
 \* PGE PATTERN SHOWN IN CROSS SECTION REPRESENTS PGE PLACEMENT SOUTH OF THE CROSS SECTION. SEE PGE PATTERN SHOWN IN CROSS SECTION 47+50.00 FOR A REPRESENTATION OF PGE PLACEMENT NORTH OF THE CROSS SECTION.

**47+29.25**

FILE NAME =	USER NAME = blockrt	DESIGNED - RTB	REVISED -
c:\pwork\pwork\blockrt\d0128383\ch10xs-propfinal.dgn		DRAWN - RTB	REVISED -
		CHECKED -	REVISED -
		DATE - 06-2008	REVISED -

**STATE OF ILLINOIS  
 DEPARTMENT OF TRANSPORTATION**

<b>CROSS SECTIONS</b>			
SCALE:	SHEET NO.	OF SHEETS	STA. TO STA.

F.A.S. RTE.	SECTION	COUNTY	TOTAL SHEETS	SHEET NO.
331	Z-BR	VERMILION	49	40
FED. ROAD DIST. NO. ILLINOIS FED. AID PROJECT			CONTRACT NO. 70016	