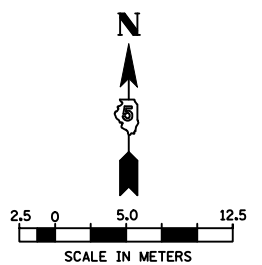
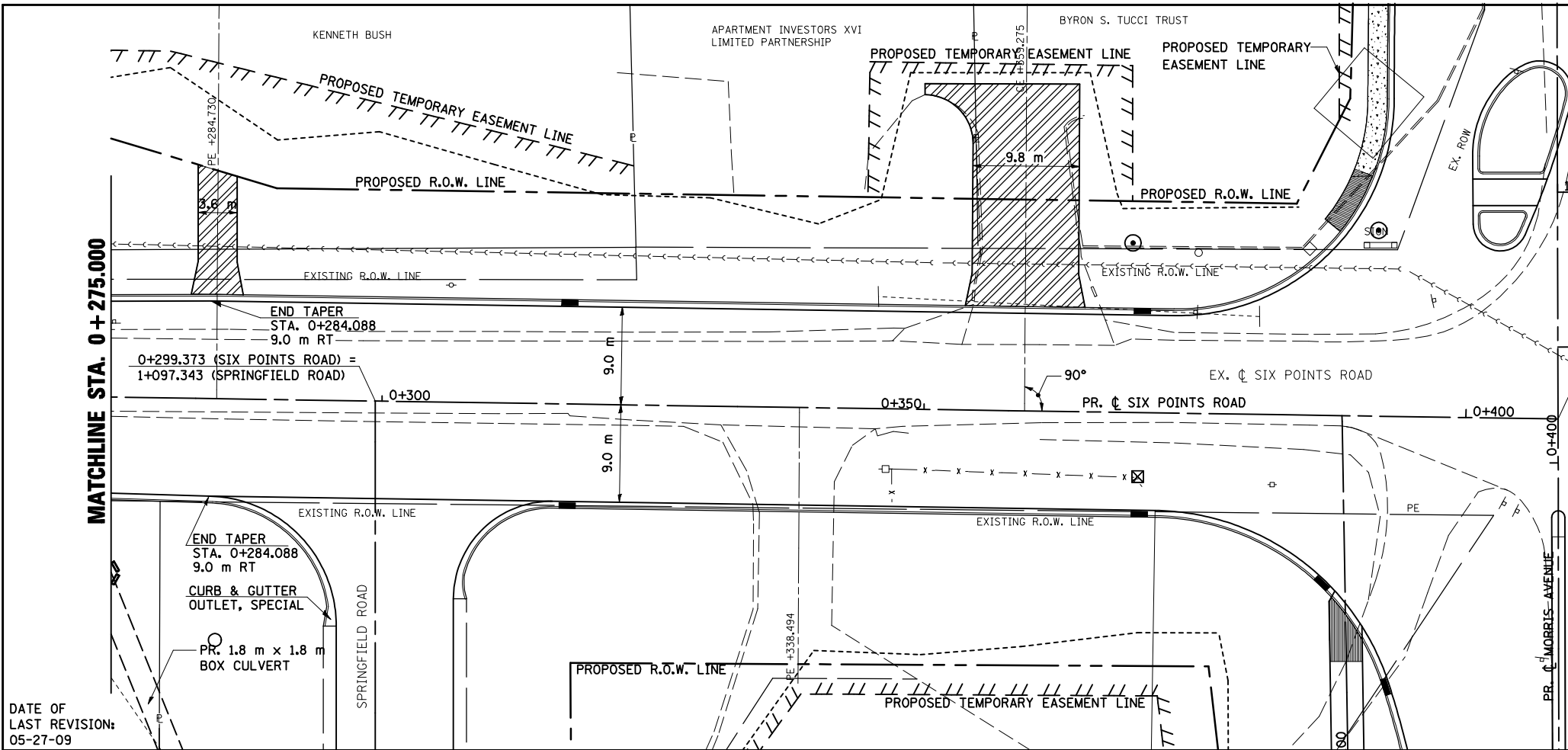


F.A.P. RTE.	SECTION	COUNTY	TOTAL SHEETS	SHEET NO.
704	(1)N & TS-1	McLEAN	497	81
STA. 0+275.000		TO STA. 0+408.500		
FED. ROAD DIST. NO.	ILLINOIS	FED. AID PROJECT		
CONTRACT NO. 70514				



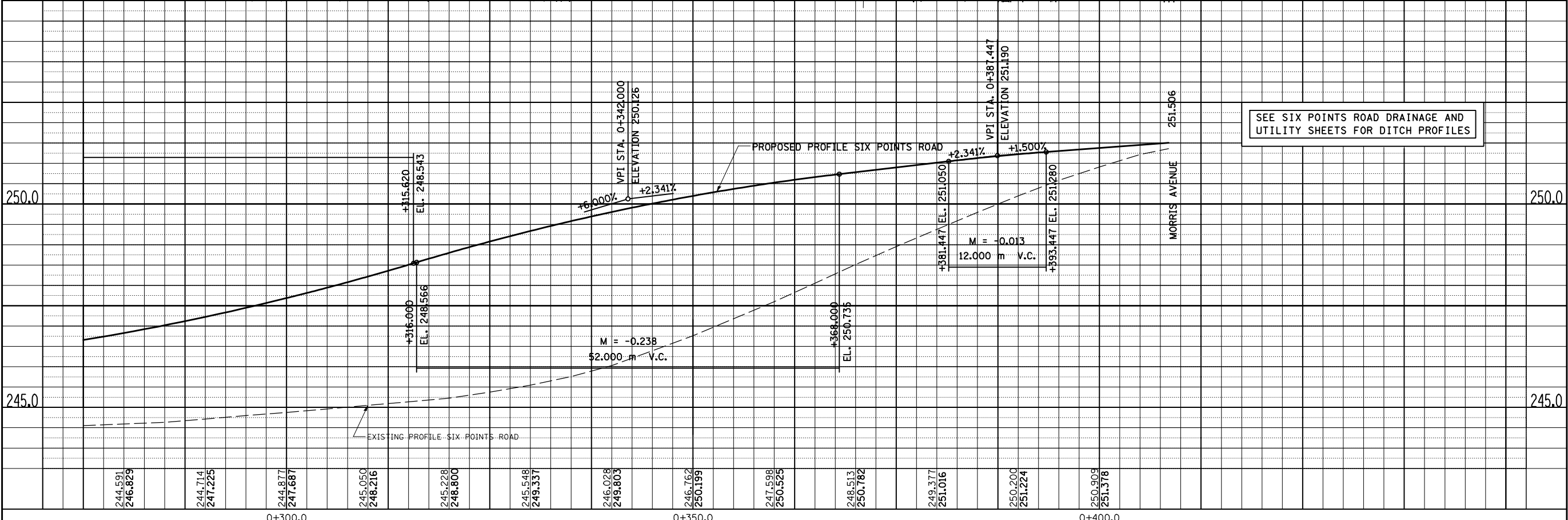
BY	DATE
FINAL SURVEYED	
SURVEY PLOTTED	
NOTE BOOK TEMPLATE	
AREAS CHECKED	
NO.	



- NOTES:
1. FOR EXISTING AND PROPOSED R. O. W. OFFSETS SEE R. O. W. PLAN, SHEETS.
 2. ALL PROPOSED COMBINATION CONCRETE CURB & GUTTER SHOWN IS TYPE B-15.45 UNLESS OTHERWISE NOTED.
 3. SEE INTERSECTION DETAILS FOR STATIONS, OFFSETS, & RADII AT INTERSECTIONS.
 4. ALL PROPOSED P. C. C. SIDEWALK IS 1.8 m UNLESS OTHERWISE NOTED.

DATE OF LAST REVISION:
05-27-09

BY	DATE
ORIGINAL SURVEYED	
SURVEY PLOTTED	
NOTE BOOK TEMPLATE	
AREAS CHECKED	
NO.	



SIX POINTS ROAD, PLAN & PROFILE, STA. 0+275.000 TO STA. 0+408.500