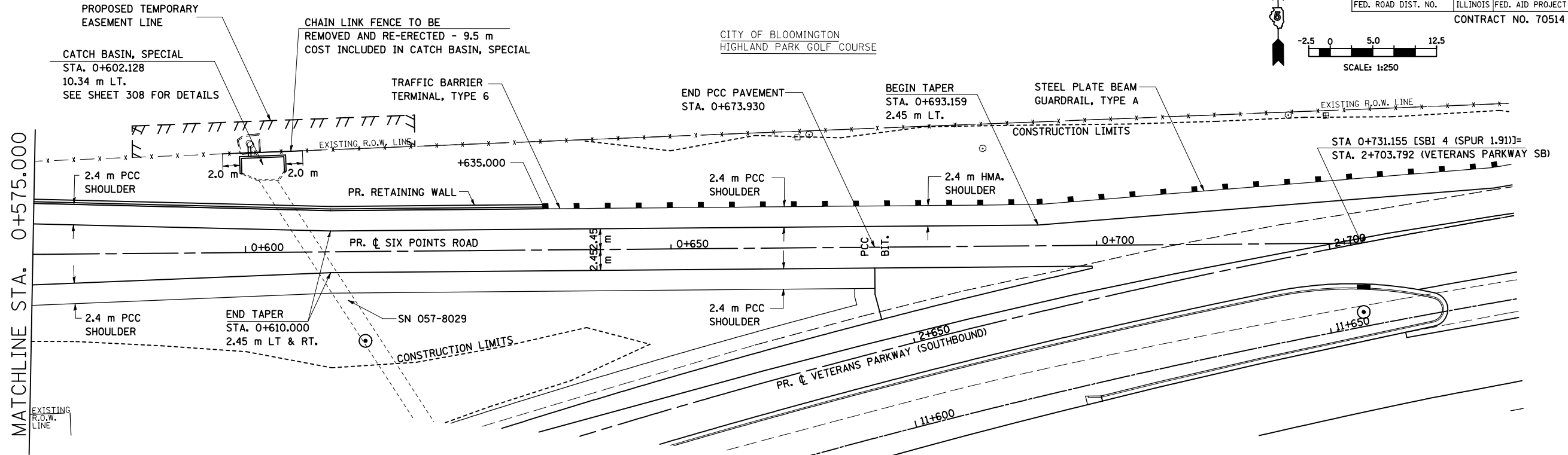
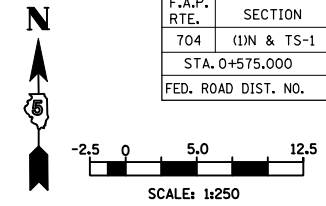


NOTES:
1. FOR EXISTING AND PROPOSED OFFSETS
SEE R.O.W. PLAN, SHEETS.

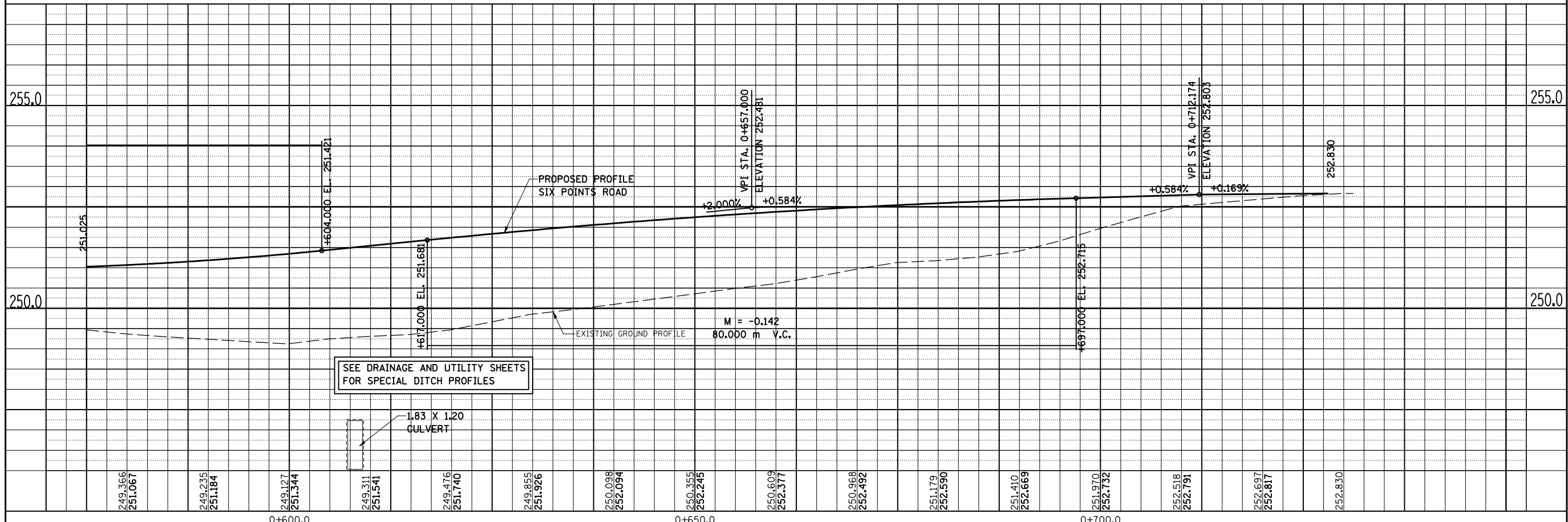
F.A.P. RTE.	SECTION	COUNTY	TOTAL SHEETS	SHEET NO.
704	(1)N & TS-1	McLEAN	497	83
STA. 0+575.000		TO STA. 0+731.155		
FED. ROAD DIST. NO.		ILLINOIS FED. AID PROJECT		
CONTRACT NO. 70514				



FINAL SURVEYED	DATE
SURVEY PLOTTED	
NOTE BOOK TEMPLATE	
AREAS CHECKED	
NO.	

ORIGINAL SURVEYED	DATE
SURVEY PLOTTED	
NOTE BOOK TEMPLATE	
AREAS CHECKED	
NO.	

DATE OF LAST REVISION:
05-27-09



SIX POINTS ROAD, PLAN & PROFILE, STA. 0 + 575.000 TO STA. 0 + 731.155