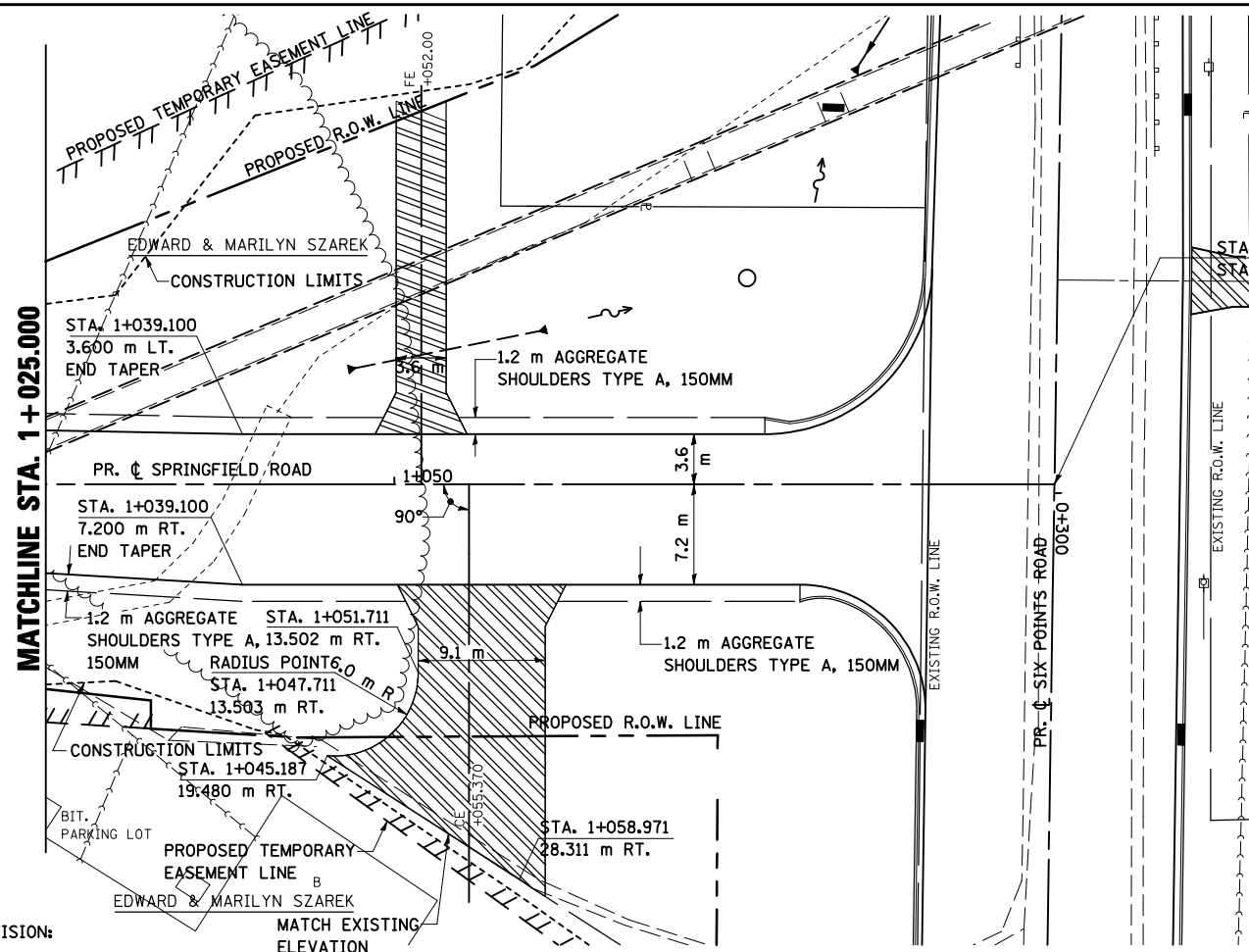
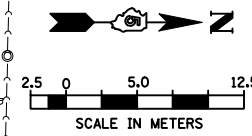


F.A.P. RTE.	SECTION	COUNTY	TOTAL SHEETS	SHEET NO.
704	(1)N & TS-1	McLEAN	497	85
STA. 1+025.000		TO STA. 1+097.343		
FED. ROAD DIST. NO.		ILLINOIS FED. AID PROJECT		
CONTRACT NO. 70514				

- NOTES:
- FOR EXISTING AND PROPOSED R.O.W. OFFSETS SEE R.O.W. PLAN, SHEETS.
 - SEE INTERSECTION DETAIL FOR STATIONS, OFFSETS AND RADII AT INTERSECTION.
 - ALL PROPOSED CONCRETE CURB AND GUTTER SHOWN IS B-15.45 UNLESS OTHERWISE NOTED.



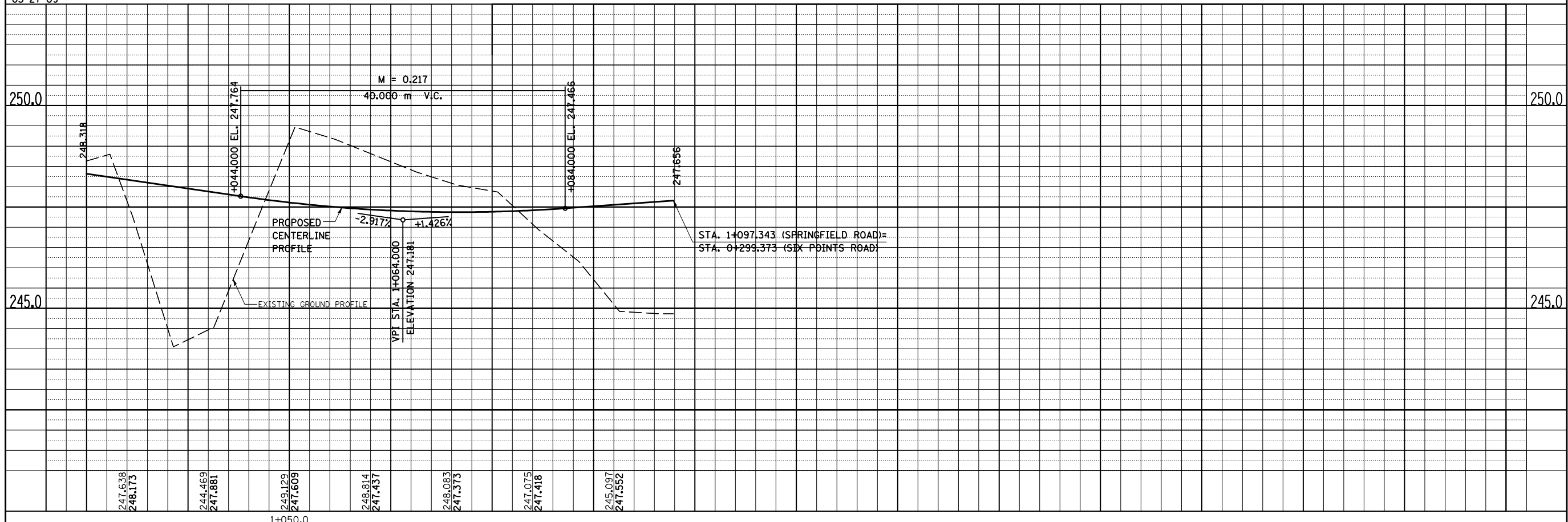
DATE OF LAST REVISION: 05-27-09

BY	DATE

FINAL SURVEYED SURVEY PLOTTED NOTE BOOK TEMPLATE AREAS CHECKED NO.

BY	DATE

ORIGINAL SURVEYED SURVEY PLOTTED NOTE BOOK TEMPLATE AREAS CHECKED NO.



1+050.0