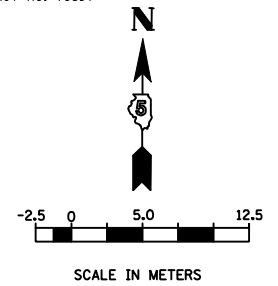
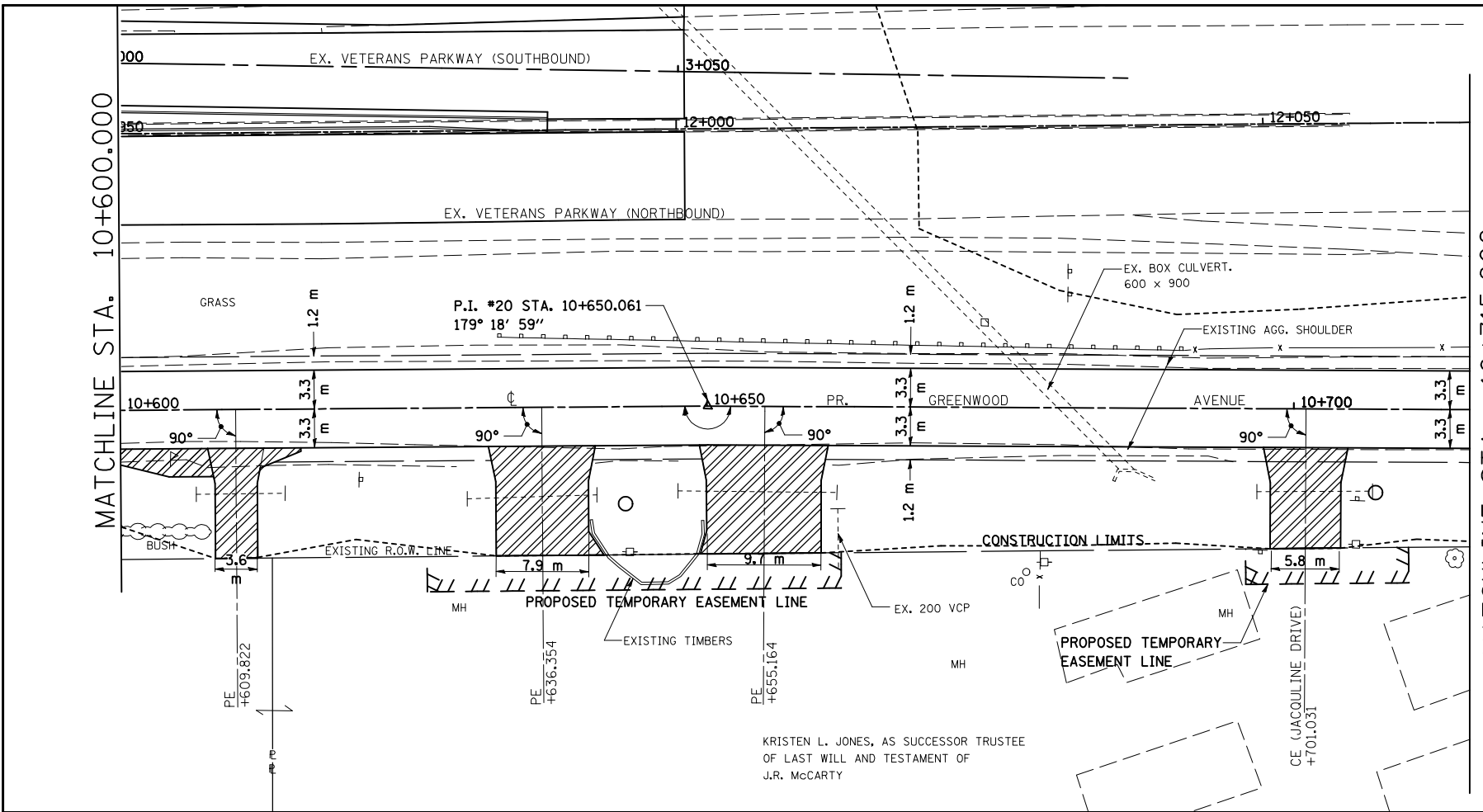


F.A.P. RT.E.	SECTION	COUNTY	TOTAL SHEETS	SHEET NO.
704	(1)N & TS-1	McLEAN	497	92
STA. 10+600.000		TO STA. 10+745.000		
FED. ROAD DIST. NO.	ILLINOIS	FED. AID PROJECT		
CONTRACT NO. 70514				



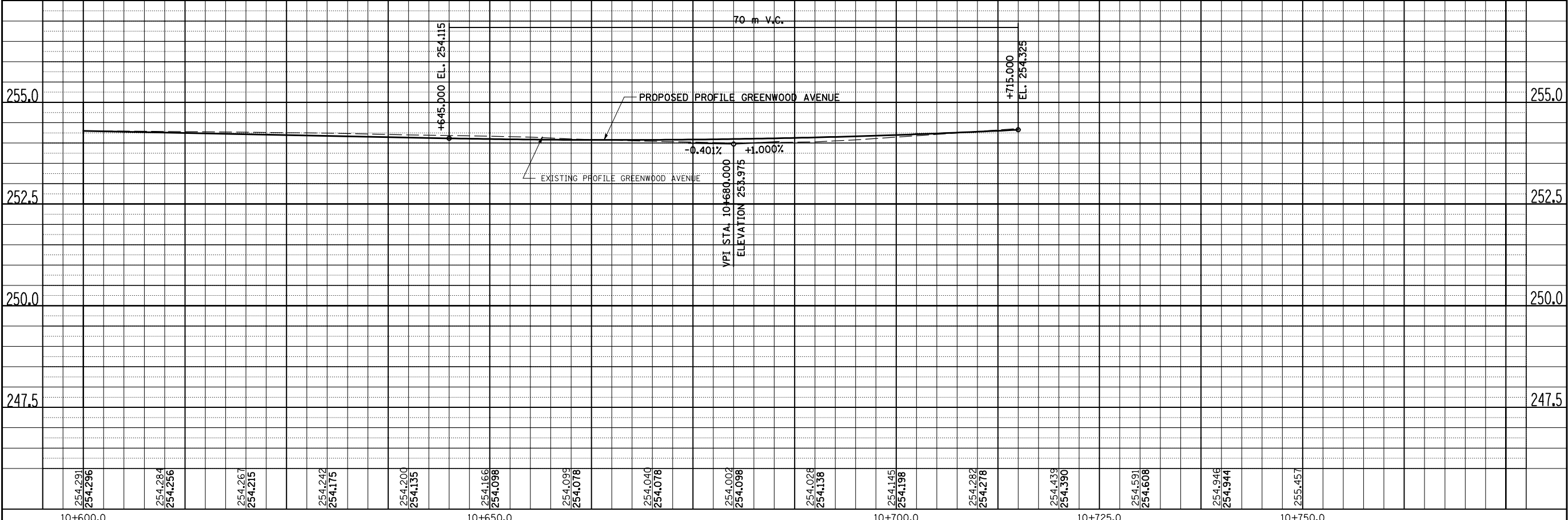
FINAL SURVEYED	BY	DATE
SURVEY PLOTTED		
NOTE BOOK TEMPLATE		
AREAS CHECKED		
NO.		

ORIGINAL SURVEYED	BY	DATE
SURVEY PLOTTED		
NOTE BOOK TEMPLATE		
AREAS CHECKED		
NO.		



NOTES:
1. FOR EXISTING AND PROPOSED OFFSETS SEE R.O.W. PLAN SHEETS.

DATE OF LAST REVISION:
05-27-09



GREENWOOD AVENUE, PLAN & PROFILE, STA. 10+600.000 TO STA. 10+715.000