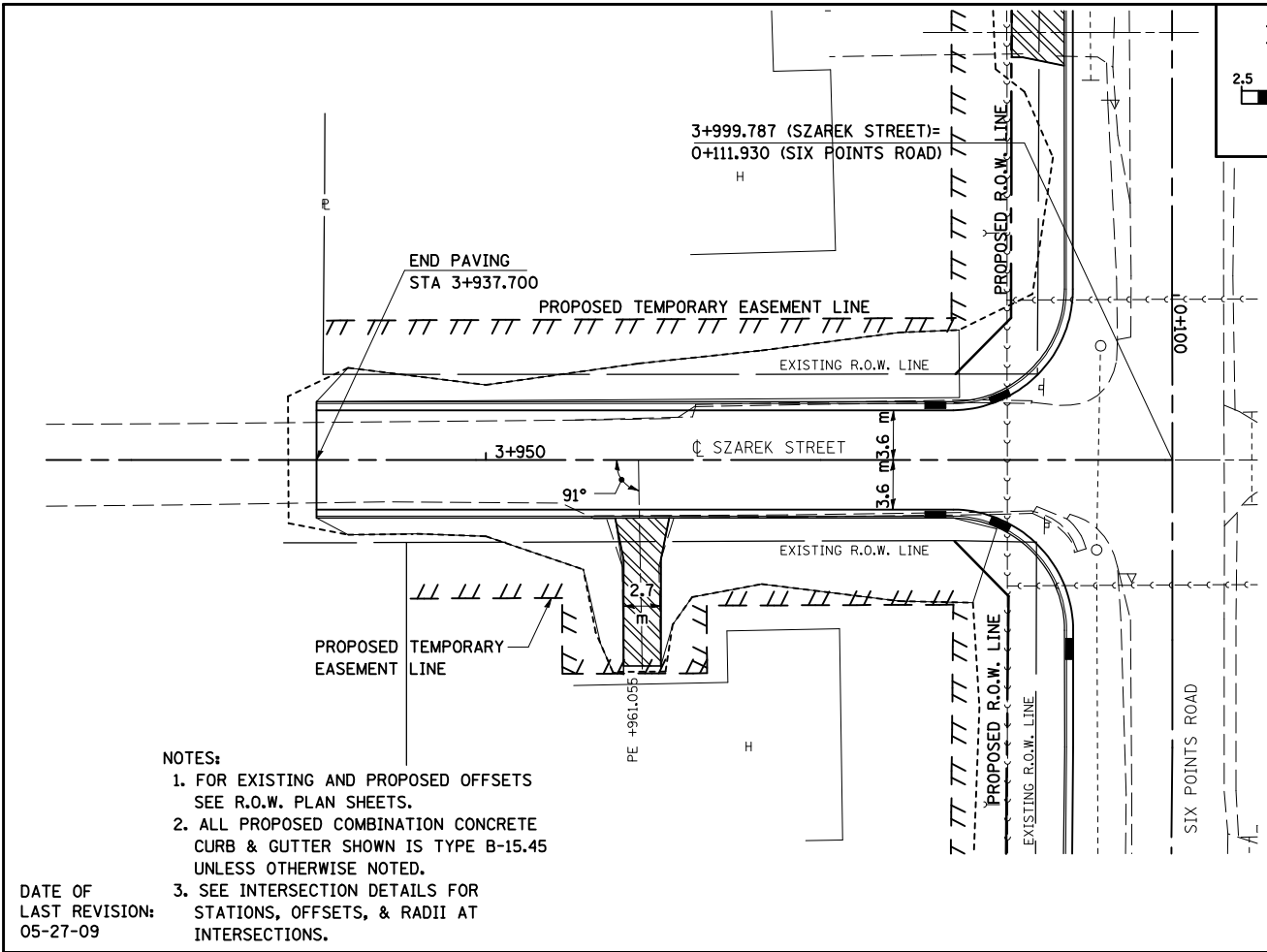


F.A.P. RTE.	SECTION	COUNTY	TOTAL SHEETS	SHEET NO.
704	(1)N & TS-1	McLEAN	497	94
STA. *	TO STA. *			
FED. ROAD DIST. NO.	ILLINOIS	FED. AID PROJECT		
	CONTRACT NO. 70514			

- SZAREK  
STA. 3+937.700 TO STA. 4+000.000  
McKAY  
STA. 5+000.000 TO STA. 5+050.512

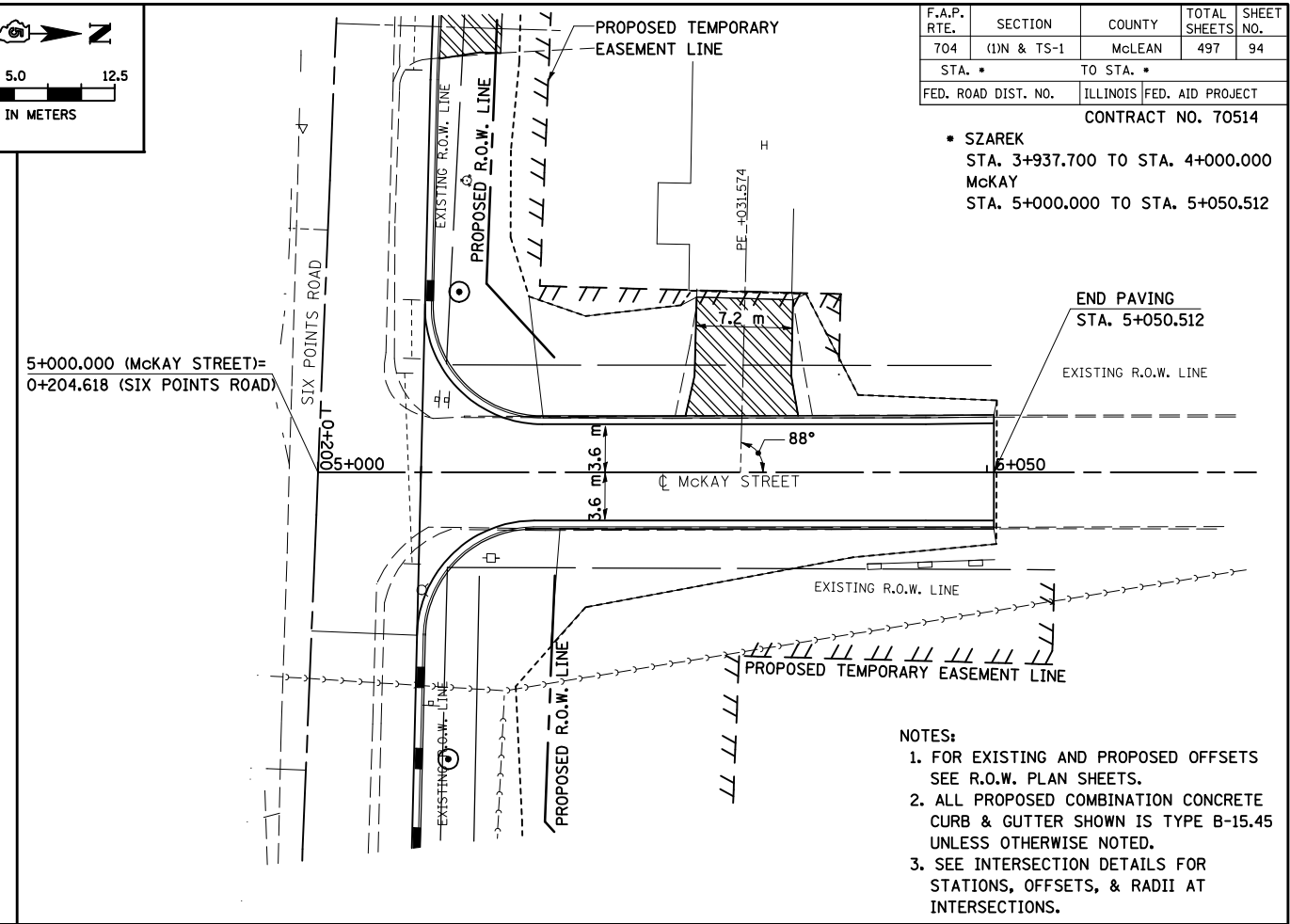
BY	DATE

BY	DATE

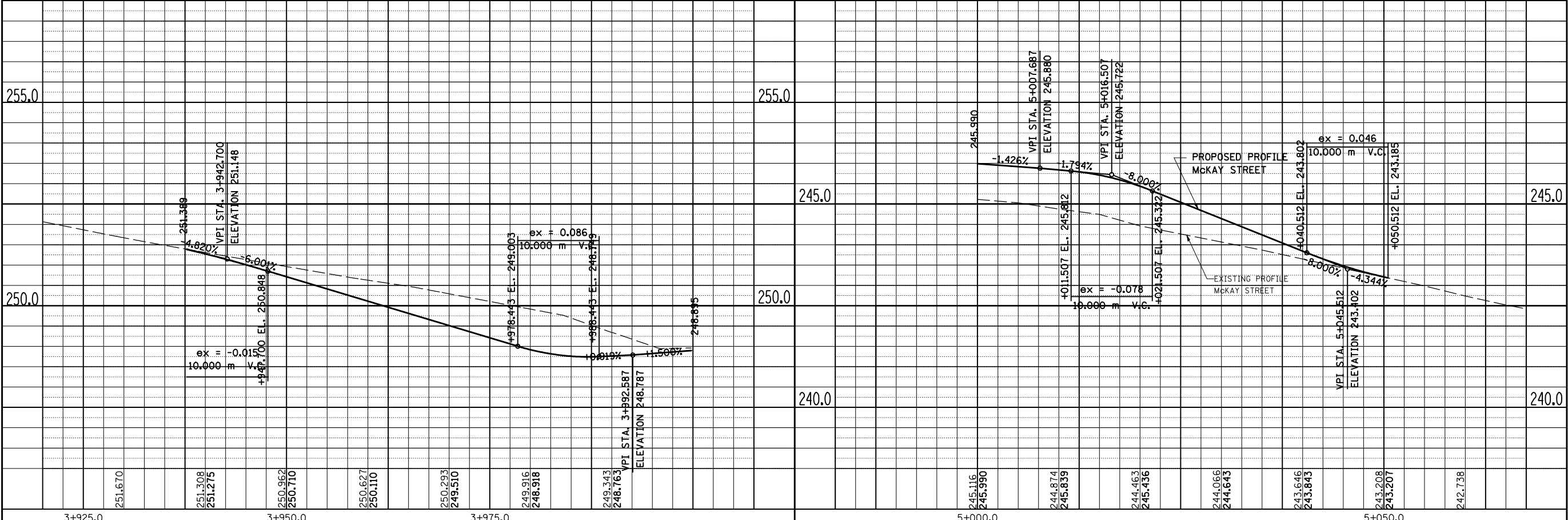


- NOTES:
1. FOR EXISTING AND PROPOSED OFFSETS SEE R.O.W. PLAN SHEETS.
  2. ALL PROPOSED COMBINATION CONCRETE CURB & GUTTER SHOWN IS TYPE B-15.45 UNLESS OTHERWISE NOTED.
  3. SEE INTERSECTION DETAILS FOR STATIONS, OFFSETS, & RADII AT INTERSECTIONS.

DATE OF LAST REVISION: 05-27-09



- NOTES:
1. FOR EXISTING AND PROPOSED OFFSETS SEE R.O.W. PLAN SHEETS.
  2. ALL PROPOSED COMBINATION CONCRETE CURB & GUTTER SHOWN IS TYPE B-15.45 UNLESS OTHERWISE NOTED.
  3. SEE INTERSECTION DETAILS FOR STATIONS, OFFSETS, & RADII AT INTERSECTIONS.



SZAREK STREET AND McKAY STREET, PLAN & PROFILE