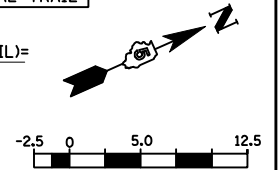


F.A.P. RTE.	SECTION	COUNTY	TOTAL SHEETS	SHEET NO.
704	(1)N & TS-1	McLEAN	497	95
STA. 15+007.099		TO STA. 15+133.828		
FED. ROAD DIST. NO.		ILLINOIS FED. AID PROJECT		
CONTRACT NO. 70514				

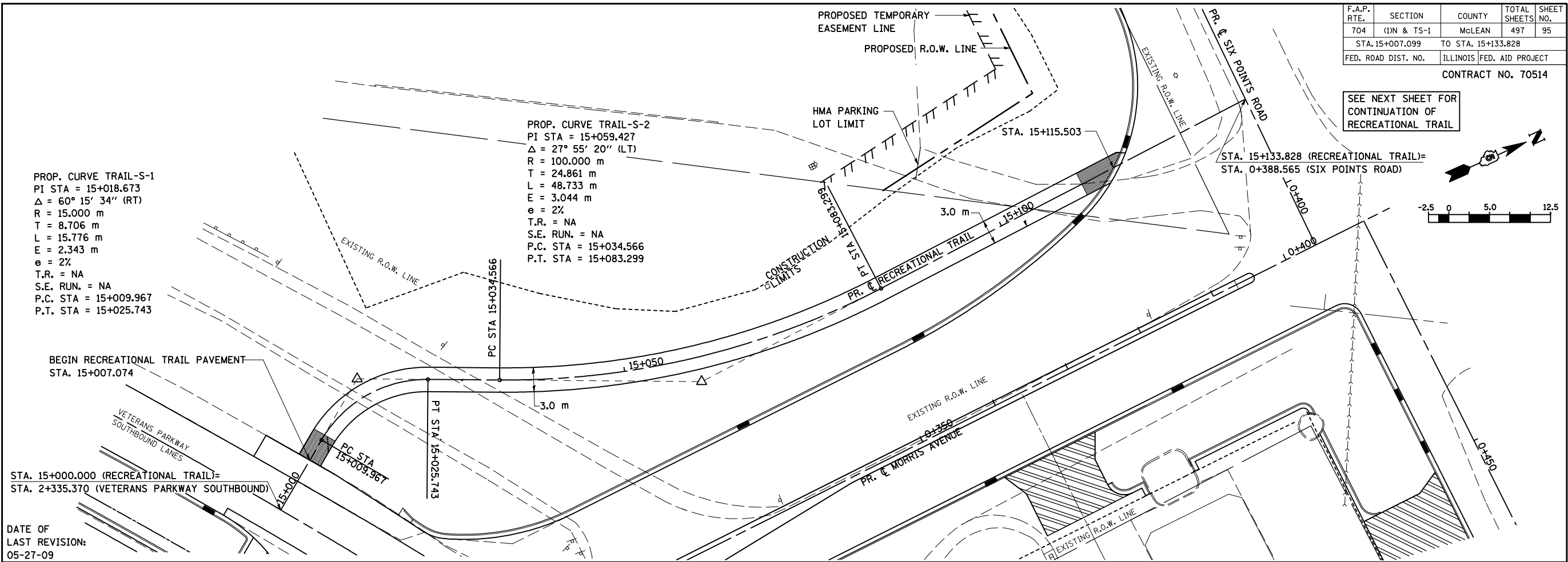
SEE NEXT SHEET FOR CONTINUATION OF RECREATIONAL TRAIL



BY	DATE

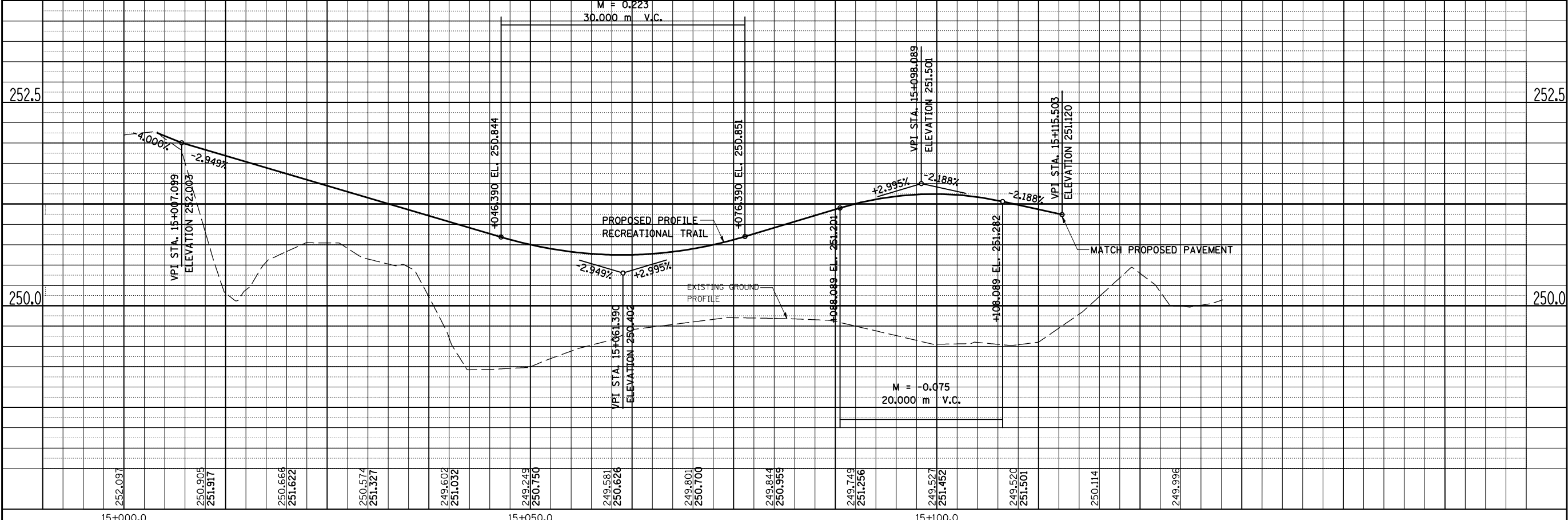
PROP. CURVE TRAIL-S-1
 PI STA = 15+018.673
 $\Delta = 60^\circ 15' 34''$ (RT)
 R = 15.000 m
 T = 8.706 m
 L = 15.776 m
 E = 2.343 m
 e = 2%
 T.R. = NA
 S.E. RUN. = NA
 P.C. STA = 15+009.967
 P.T. STA = 15+025.743

PROP. CURVE TRAIL-S-2
 PI STA = 15+059.427
 $\Delta = 27^\circ 55' 20''$ (LT)
 R = 100.000 m
 T = 24.861 m
 L = 48.733 m
 E = 3.044 m
 e = 2%
 T.R. = NA
 S.E. RUN. = NA
 P.C. STA = 15+034.566
 P.T. STA = 15+083.299



DATE OF LAST REVISION:
05-27-09

BY	DATE



RECREATIONAL TRAIL, PLAN & PROFILE, STA. 15+007.099 TO STA. 15+133.828