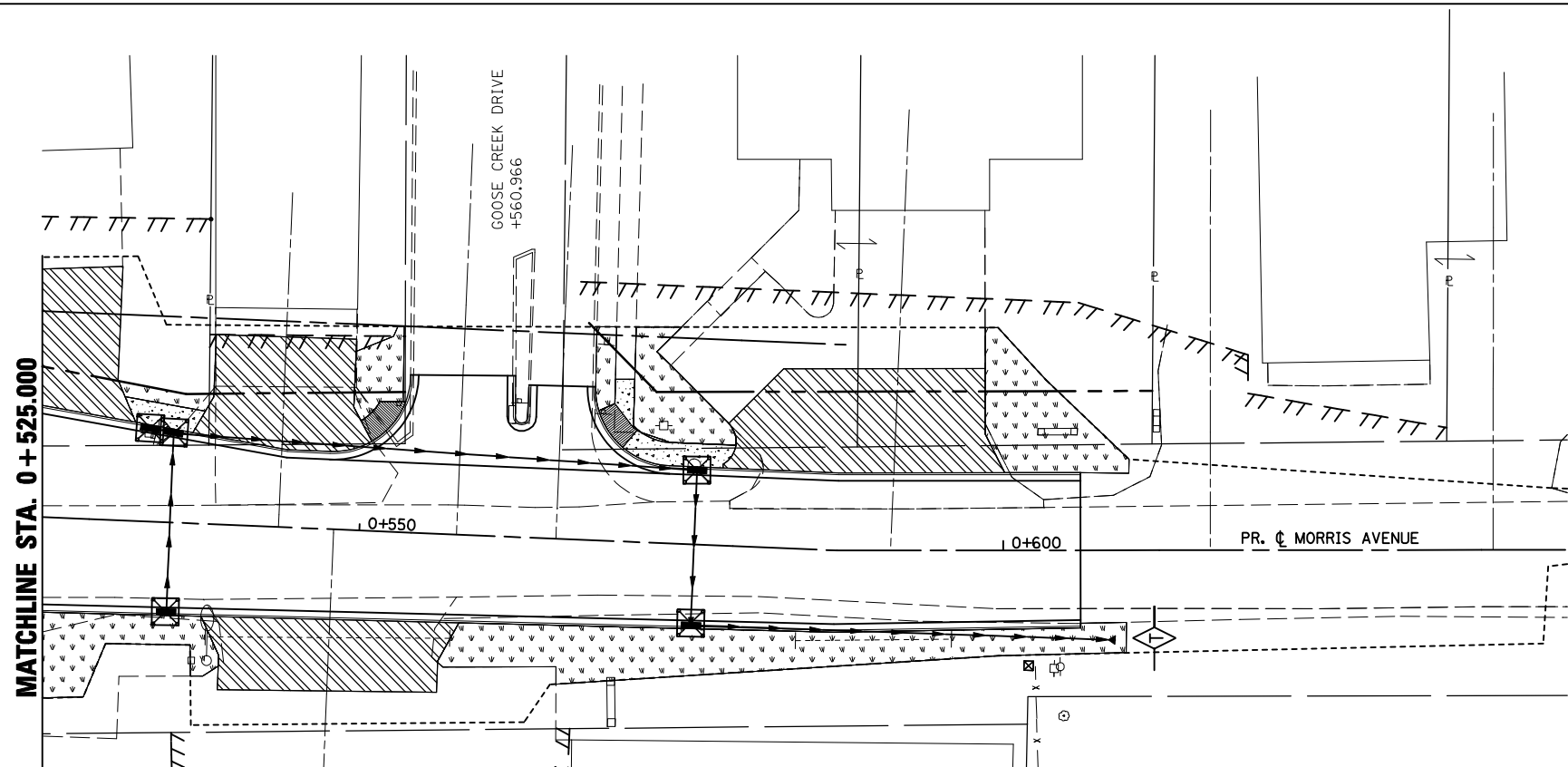
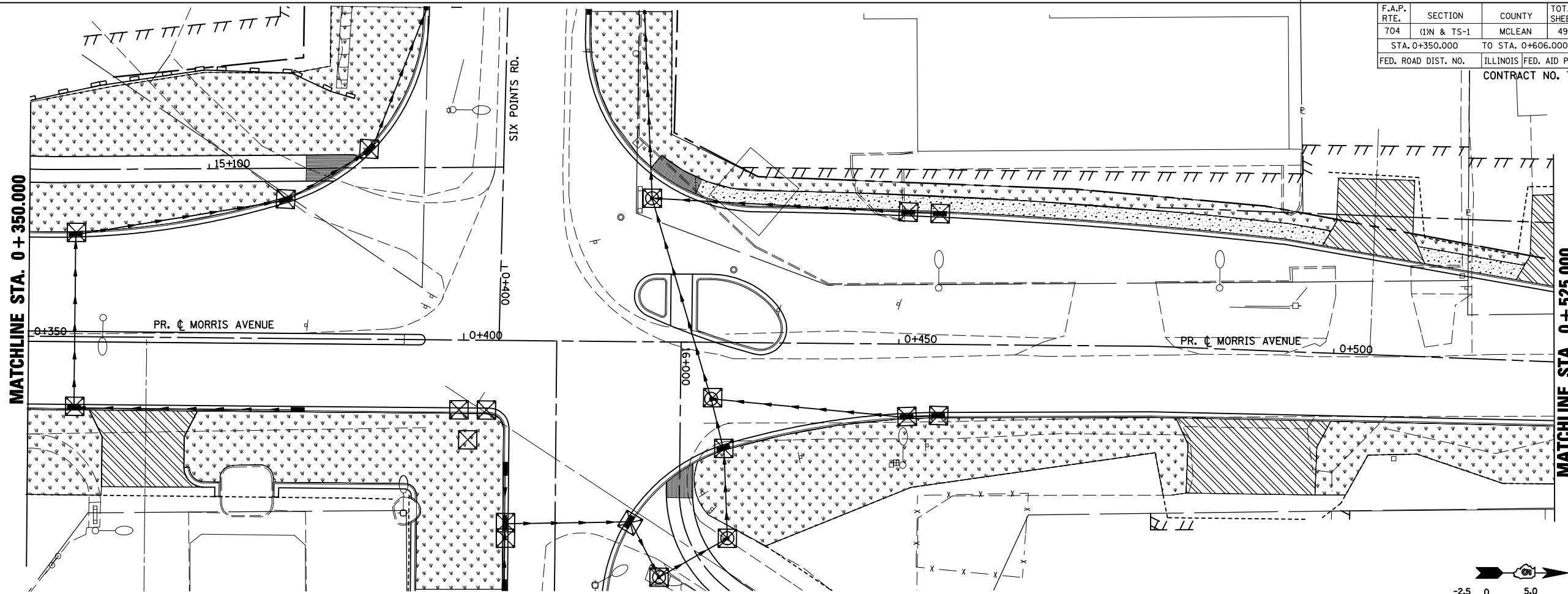


F.A.P. RTE.	SECTION	COUNTY	TOTAL SHEETS	SHEET NO.
704	(1)N & TS-1	MCLEAN	497	148
STA. 0+350.000		TO STA. 0+606.000		
FED. ROAD DIST. NO.	ILLINOIS FED. AID PROJECT		CONTRACT NO. 70514	



- LEGEND**
- TEMPORARY DITCH CHECKS
  - INLET AND PIPE PROTECTION
  - SEEDING, CLASS 1 WITH MULCH METHOD 2
  - EROSION CONTROL BLANKET

REVISIONS		ILLINOIS DEPARTMENT OF TRANSPORTATION
NAME	DATE	
		<b>EROSION CONTROL MORRIS AVENUE (NORTH)</b>  DRAWN BY SAM CHECKED BY PMH  DATE 05-27-09

PLOT DATE = 8/2/2010  
 PLOT SCALE = 1:250000  
 USER NAME = craigie

**MORRIS AVENUE, EROSION CONTROL, STA. 0 + 350.000 TO STA. 0 + 606.000**