

F.A.P. RTE.	SECTION	COUNTY	TOTAL SHEETS	SHEET NO.
704	(1)N & TS-1	MCLEAN	497	193
STA. N/A		TO STA. N/A		
FED. ROAD DIST. NO.		ILLINOIS FED. AID PROJECT		
CONTRACT NO. 70514				

SO-DEEP Inc.
The Subsurface Utility Engineering Company
8397 Euclid Avenue
Manassas Park, VA 20111
(703) 361-6005

So-Deep Test Hole Certification Form - Metric

© So-Deep, Inc. 1988, 1994

Control # **SILA093**
Test Hole # **3**
Plan Scale **1:250**
Sheet # **13**
Proposed **GRADE CHANGE**
Date **OCTOBER 21, 2005**

City, County, State **MCLEAN CO., IL**
Gen. Loc. **MORRIS AVE., N. OF GREENWOOD AVE.**
Recorded Size/Material/Type **(3) 102MM PLAS. TELE. CONDUITS**
Foreman/Truck#/Form By **J. HARLIN /221 /M. LOSE**

Condition of paving prior to work
NO PAVING

B.M. 1 Elev. = **253.445M**
is **GIVEN**

Description: **(TRAV 2005) CHIS. "X" FOUND; 2.10M ± LT OF STA. 0+221.00± S. MORRIS AVE.**

SO-DEEP will attempt to use the BM/Hi most applicable to your design. If however, BMs differ by more than .05, resulting differences could cause design conflicts.

B.M. 2 Elev. = **251.463M**
is **GIVEN**

Description: **(TRAV 2000) TOP OF RR SPIKE FOUND; 20.40M ± RT OF STA. 0+402.60± S. MORRIS AVE.**

Benchmarks check **BY 0.004M**
Elevations are referenced to **B.M.#1**

Recorded Size/Type of utility **WAS FOUND**

There **WERE NOT** additional utilities in the test hole.

The utility **WAS** in good condition.

Paving Thickness and type **NO PAVE**

Color of ribbon installed **ORANGE**

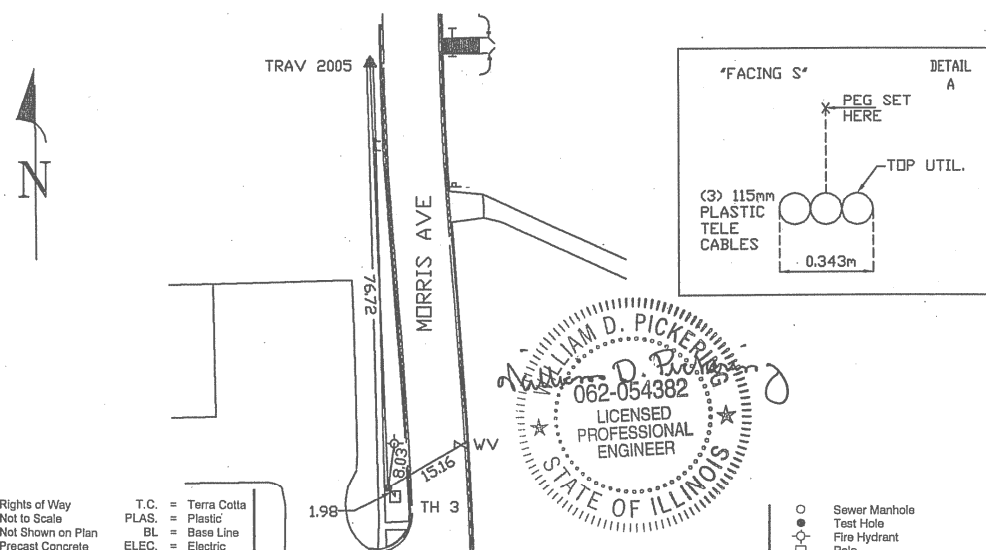
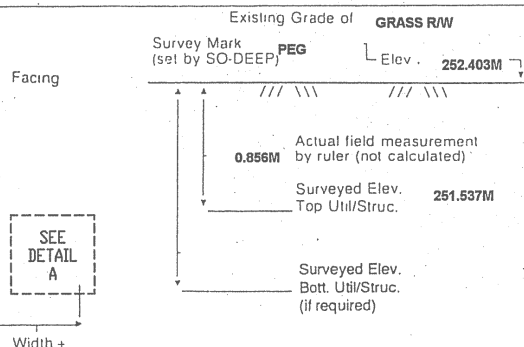
Soil Type **DRY, SANDY**

Field Condition **GRASS R/W**

T.H. lied to **PEG**

(3) 115MM PLAS. TELE. CABLES
Size/Material/Type
Portion of pipe exposed for O.D. measurement:
N/A

Remarks: **NONE**



WILLIAM D. PICKERING
062-054382
LICENSED PROFESSIONAL ENGINEER
STATE OF ILLINOIS

- R/W = Rights of Way
- N.T.S. = Not to Scale
- * = Not Shown on Plan
- PCC = Precast Concrete
- COND. = Conduit
- CONC. = Concrete
- O.D. = Outside Diameter
- C.I. = Cast Iron
- D.I. = Ductile Iron
- RPC = Rough Pour Concrete
- CL = Centerline
- T.C. = Terra Cotta
- PLAS. = Plastic
- BL = Base Line
- ELEC. = Electric
- TELE. = Telephone
- T.H. = Test Hole
- SW = Sidewalk
- DW = Driveway
- BM = Benchmark
- C.B. = Catch Basin
- GV = Gas Valve

Performing out-of-sight work...with vision!™

All values are shown in meters (m) or millimeters (mm).
To convert to feet multiply meters by 3.2808.
Note: To eliminate mistakes and check this work, So-Deep suggests you scale and plot all dimensions onto the plans and review all elevations carefully. So-Deep is responsible only for information shown on our forms.

- Sewer Manhole
- Test Hole
- ⊕ Fire Hydrant
- ⊙ Pole
- x-x-x-x-x Fence Line
- ⊖ Electric Manhole
- △ = T.S. = Traverse Station
- ⊕ Valve
- ⊕ Water Meter
- ⊕ Telephone Manhole
- ⊕ Telephone Pedestal

SO-DEEP Inc.
The Subsurface Utility Engineering Company
8397 Euclid Avenue
Manassas Park, VA 20111
(703) 361-6005

So-Deep Test Hole Certification Form - Metric

© So-Deep, Inc. 1988, 1994

Control # **SILA093**
Test Hole # **4**
Plan Scale **1:250**
Sheet # **13**
Proposed **GRADE CHANGE**
Date **OCTOBER 21, 2005**

City, County, State **MCLEAN CO., IL**
Gen. Loc. **MORRIS AVE., S. OF GREENWOOD AVE.**
Recorded Size/Material/Type **(3) 102MM PLAS. TELE. CONDUITS**
Foreman/Truck#/Form By **J. HARLIN /221 /M. LOSE**

Condition of paving prior to work
CONC SW IN GOOD COND.

B.M. 1 Elev. = **253.445M**
is **GIVEN**

Description: **(TRAV 2005) CHIS. "X" FOUND; 2.10M ± LT OF STA. 0+221.00± S. MORRIS AVE.**

SO-DEEP will attempt to use the BM/Hi most applicable to your design. If however, BMs differ by more than .05, resulting differences could cause design conflicts.

B.M. 2 Elev. = **251.463M**
is **GIVEN**

Description: **(TRAV 2000) TOP OF RR SPIKE FOUND; 20.40M ± RT OF STA. 0+402.60± S. MORRIS AVE.**

Benchmarks check **BY 0.004M**
Elevations are referenced to **B.M.#1**

Recorded Size/Type of utility **WAS FOUND**

There **WERE NOT** additional utilities in the test hole.

The utility **WAS** in good condition.

Paving Thickness and type **102MM CONC**

Color of ribbon installed **ORANGE**

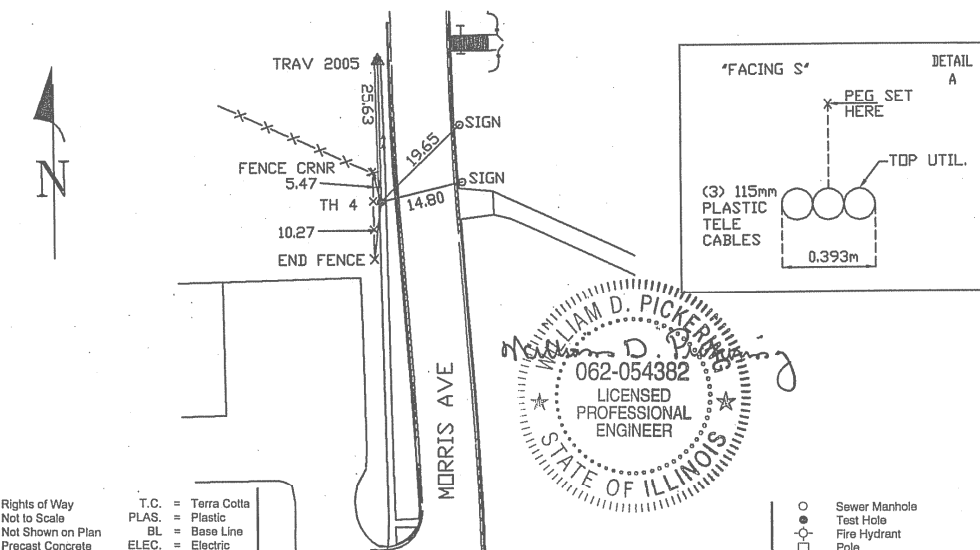
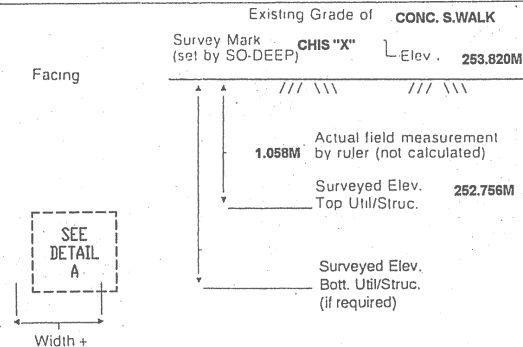
Soil Type **DRY, SANDY**

Field Condition **CONC SW**

T.H. lied to **CHIS "X"**

(3) 115MM PLAS. TELE. CONDUITS
Size/Material/Type
Portion of pipe exposed for O.D. measurement:
N/A

Remarks: **NONE**



WILLIAM D. PICKERING
062-054382
LICENSED PROFESSIONAL ENGINEER
STATE OF ILLINOIS

- R/W = Rights of Way
- N.T.S. = Not to Scale
- * = Not Shown on Plan
- PCC = Precast Concrete
- COND. = Conduit
- CONC. = Concrete
- O.D. = Outside Diameter
- C.I. = Cast Iron
- D.I. = Ductile Iron
- RPC = Rough Pour Concrete
- CL = Centerline
- T.C. = Terra Cotta
- PLAS. = Plastic
- BL = Base Line
- ELEC. = Electric
- TELE. = Telephone
- T.H. = Test Hole
- SW = Sidewalk
- DW = Driveway
- BM = Benchmark
- C.B. = Catch Basin
- GV = Gas Valve

Performing out-of-sight work...with vision!™

All values are shown in meters (m) or millimeters (mm).
To convert to feet multiply meters by 3.2808.
Note: To eliminate mistakes and check this work, So-Deep suggests you scale and plot all dimensions onto the plans and review all elevations carefully. So-Deep is responsible only for information shown on our forms.

- Sewer Manhole
- Test Hole
- ⊕ Fire Hydrant
- ⊙ Pole
- x-x-x-x-x Fence Line
- ⊖ Electric Manhole
- △ = T.S. = Traverse Station
- ⊕ Valve
- ⊕ Water Meter
- ⊕ Telephone Manhole
- ⊕ Telephone Pedestal

REVISIONS		ILLINOIS DEPARTMENT OF TRANSPORTATION
NAME	DATE	
		SUBSURFACE UTILITY ENGINEERING DETAILS SHEET 2 OF 11 DRAWN BY SAM CHECKED BY PMH DATE 5/27/09