

F.A.P. RTE.	SECTION	COUNTY	TOTAL SHEETS	SHEET NO.
704	(1)N & TS-1	McLEAN	497	199
STA. N/A		TO STA. N/A		
FED. ROAD DIST. NO.		ILLINOIS FED. AID PROJECT		

CONTRACT NO. 70514

SO-DEEP Inc.
The Subsurface Utility Engineering Company
8397 Euclid Avenue
Manassas Park, VA 20111
(703) 361-6005

So-Deep Test Hole Certification Form - Metric

© So-Deep, Inc. 1988, 1994

Control # **SILA093**
Test Hole # **15**
Plan Scale **1:250**
Sheet # **3**
Proposed Date **STORM X-ING**
OCTOBER 19, 2005

City, County, State **MCLEAN CO., IL**
Gen. Loc. **N. CORNER OF MORRIS AVE. & SPRINGFIELD RD.**
Recorded Size/Material/Type **(2) 13MM TELE. CABLES**
Foreman/Truck#/Form By **J. HARLIN /221 /M. LOSE**

Condition of paving prior to work
NO PAVING

B.M. 1 Elev. = **251.463M**
is **GIVEN**
Description: **(TRAV 2000) TOP OF RR SPIKE FOUND; 20.40M ± RIGHT OF STATION 0+402.60±, S. MORRIS AVE.**

B.M. 2 Elev. = **250.851M**
is **CALCULATED**
Description: **CHIS. "X" SET TOP RIM SSMH; 14.0M± LEFT OF STATION 0+418.20±, S. MORRIS AVE.**

Benchmarks check **BY 0.003M**
Elevations are referenced to **B.M.#2**

Recorded Size/Type of utility **WAS FOUND**

There **WERE NOT** additional utilities in the test hole

The utility **WAS** in good condition.

Paving Thickness and type **NO PAVE**

Color of ribbon installed **ORANGE**

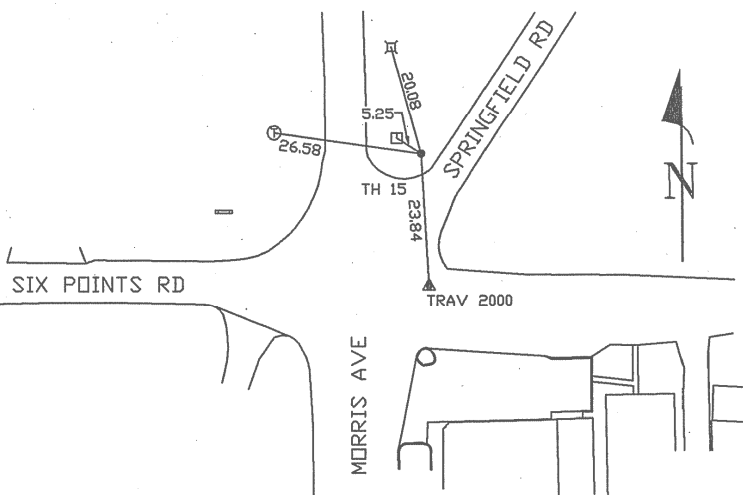
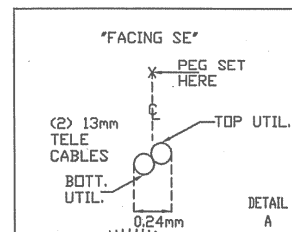
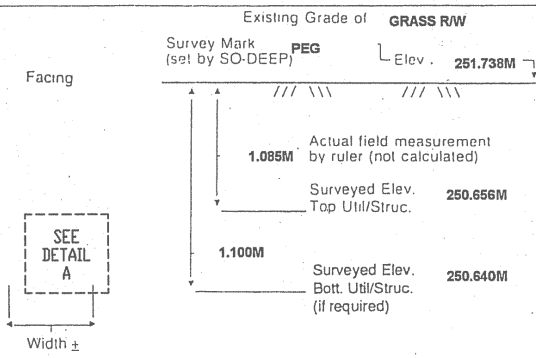
Soil Type **MOIST DIRT**

Field Condition **GRASS RW**

T.H. tied to **PEG**

(2) 13MM TELE. CABLES
Size/Material/Type
Portion of pipe exposed for O.D. measurement:
OTHER, (SEE REMARKS)

Remarks: ***THE (2) 13MM TELE. CABLES ARE MAKING A NOTICABLE VERTICAL GRADE CHANGE IN A S. EASTERLY DIRECTION.**

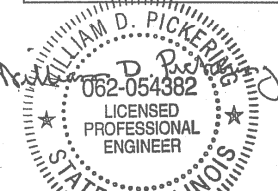


- R/W = Rights of Way
- N.T.S. = Not to Scale
- * = Not Shown on Plan
- PCC = Precast Concrete
- COND. = Conduit
- CONC. = Concrete
- O.D. = Outside Diameter
- C.I. = Cast Iron
- D.I. = Ductile Iron
- RPC = Rough Pour Concrete
- CL = Centerline
- T.C. = Terra Cotta
- PLAS. = Plastic
- BL = Base Line
- ELEC. = Electric
- TELE = Telephone
- T.H. = Test Hole
- SW = Sidewalk
- DW = Driveway
- BM = Benchmark
- C.B. = Catch Basin
- GV = Gas Valve

Performing out-of-sight work...with vision!™

All values are shown in meters (m) or millimeters (mm).
To convert to feet multiply meters by 3.2808.
Note: To eliminate mistakes and check this work, So-Deep suggests you scale and plot all dimensions onto the plans and review all elevations carefully. So-Deep is responsible only for information shown on our forms.

- = Sewer Manhole
- = Test Hole
- = Fire Hydrant
- ⊕ = Pole
- ××××× = Fence Line
- ⊖ = Electric Manhole
- ⊕ = T.S. = Traverse Station
- ⊕ = Valve
- ⊕ = Water Meter
- ⊕ = Telephone Manhole
- ⊕ = Telephone Pedestal



SO-DEEP Inc.
The Subsurface Utility Engineering Company
8397 Euclid Avenue
Manassas Park, VA 20111
(703) 361-6005

So-Deep Test Hole Certification Form - Metric

© So-Deep, Inc. 1988, 1994

Control # **SILA093**
Test Hole # **16**
Plan Scale **1:250**
Sheet # **3**
Proposed Date **STORM X-ING**
OCTOBER 19, 2005

City, County, State **MCLEAN CO., IL**
Gen. Loc. **W. OF INT. MORRIS AVE. & SIX POINTS RD.**
Recorded Size/Material/Type **305MM UNK. TYPE WATER LINE**
Foreman/Truck#/Form By **J. HARLIN /221 /M. LOSE**

Condition of paving prior to work
ASPHALT IN GOOD COND.

B.M. 1 Elev. = **251.463M**
is **GIVEN**
Description: **(TRAV 2000) TOP OF RR SPIKE FOUND; 20.40M ± RIGHT OF STATION 0+402.60±, S. MORRIS AVE.**

B.M. 2 Elev. = **250.851M**
is **CALCULATED**
Description: **CHIS. "X" SET TOP RIM SSMH; 14.0M± LEFT OF STATION 0+418.20±, S. MORRIS AVE.**

Benchmarks check **BY 0.003M**
Elevations are referenced to **B.M.#2**

Recorded Size/Type of utility **WAS FOUND**

There **WERE NOT** additional utilities in the test hole

The utility **WAS** in good condition.

Paving Thickness and type **203MM ASPH.**

Color of ribbon installed **BLUE**

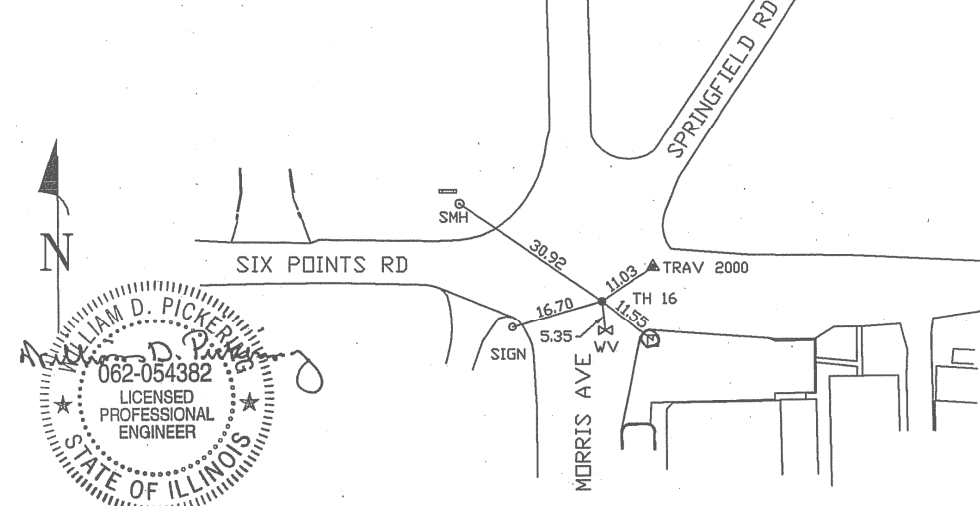
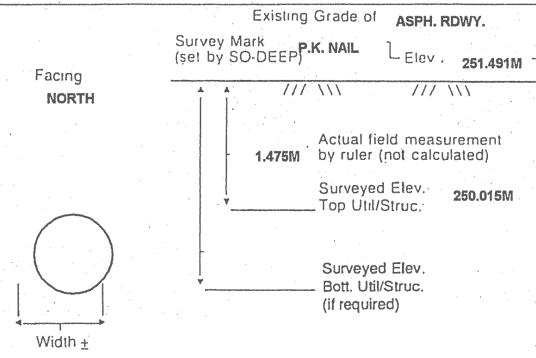
Soil Type **DRY, SANDY SOIL**

Field Condition **LIGHT RD. TRAFFIC**

T.H. tied to **P.K. NAIL**

***356MM CORRODED METALLIC WATER LINE**
Size/Material/Type
Portion of pipe exposed for O.D. measurement:
FULL

Remarks: ***THE CREW FOUND THE 305MM UNK. MATERIAL WATER LINE HEAVILY CORRODED @ THIS LOCATION.**

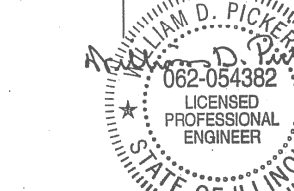


- R/W = Rights of Way
- N.T.S. = Not to Scale
- * = Not Shown on Plan
- PCC = Precast Concrete
- COND. = Conduit
- CONC. = Concrete
- O.D. = Outside Diameter
- C.I. = Cast Iron
- D.I. = Ductile Iron
- RPC = Rough Pour Concrete
- CL = Centerline
- T.C. = Terra Cotta
- PLAS. = Plastic
- BL = Base Line
- ELEC. = Electric
- TELE = Telephone
- T.H. = Test Hole
- SW = Sidewalk
- DW = Driveway
- BM = Benchmark
- C.B. = Catch Basin
- GV = Gas Valve

Performing out-of-sight work...with vision!™

All values are shown in meters (m) or millimeters (mm).
To convert to feet multiply meters by 3.2808.
Note: To eliminate mistakes and check this work, So-Deep suggests you scale and plot all dimensions onto the plans and review all elevations carefully. So-Deep is responsible only for information shown on our forms.

- = Sewer Manhole
- = Test Hole
- = Fire Hydrant
- ⊕ = Pole
- ××××× = Fence Line
- ⊖ = Electric Manhole
- ⊕ = T.S. = Traverse Station
- ⊕ = Valve
- ⊕ = Water Meter
- ⊕ = Telephone Manhole
- ⊕ = Telephone Pedestal



REVISIONS		ILLINOIS DEPARTMENT OF TRANSPORTATION
NAME	DATE	
		<p align="center">SUBSURFACE UTILITY ENGINEERING DETAILS SHEET 8 OF 11</p> <p align="right">DRAWN BY SAM CHECKED BY PMH</p>