

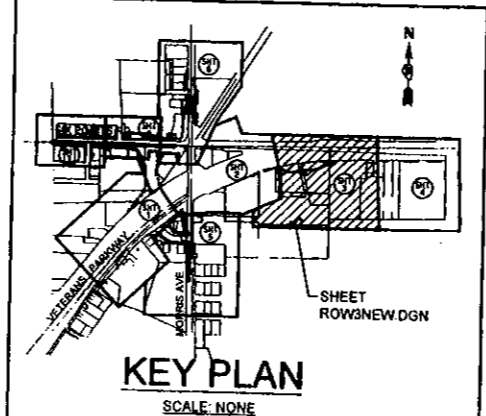
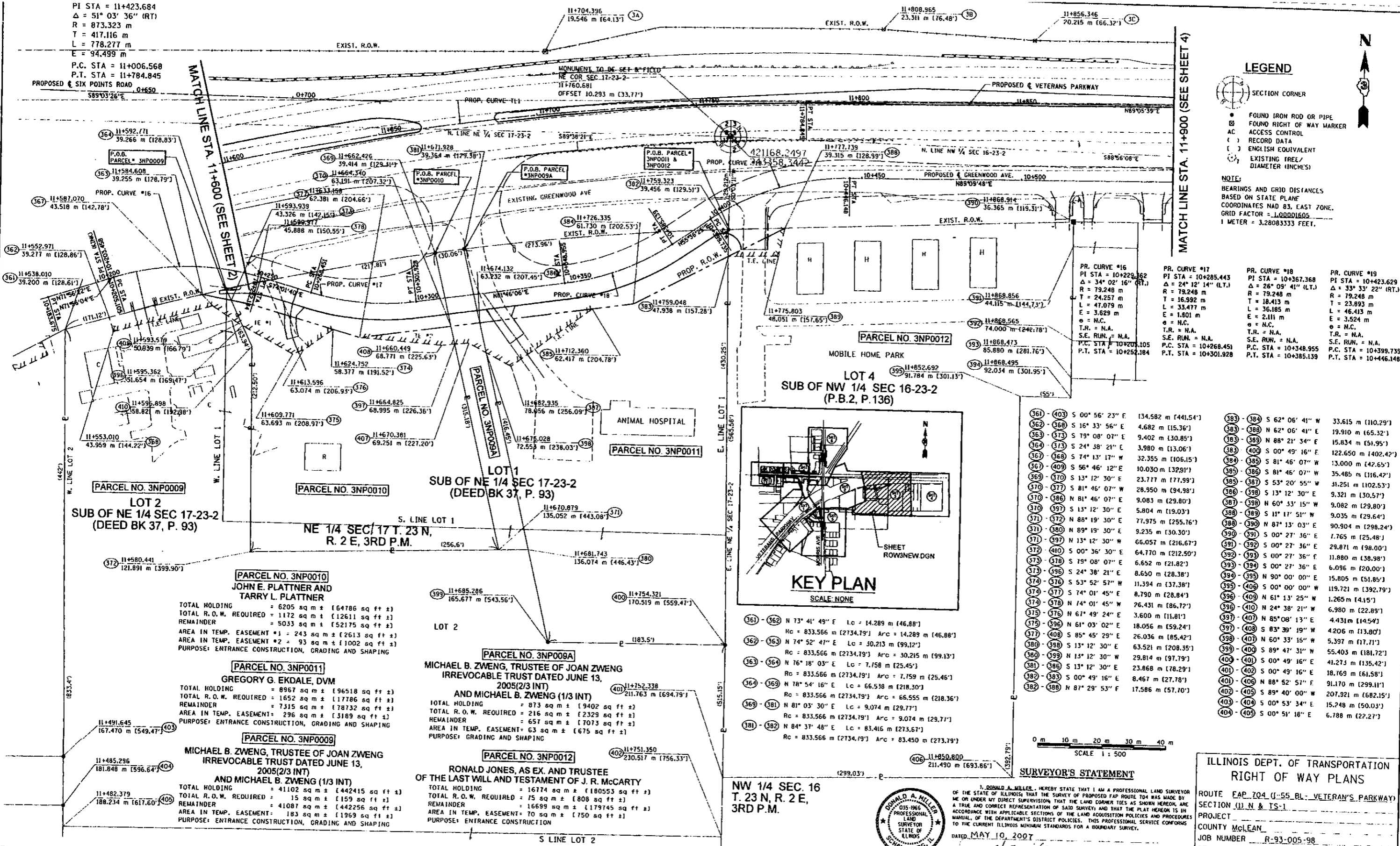
PI STA = 11+423.684
 $\Delta = 51^\circ 03' 36''$ (RT)
 R = 873.323 m
 T = 417.116 m
 L = 778.277 m
 E = 94.499 m

P.C. STA = 11+006.568
 P.T. STA = 11+784.845
 PROPOSED SIX POINTS ROAD 0+650
 $589^\circ 03' 26''$ E

LEGEND

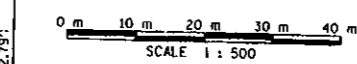
- SECTION CORNER
- FOUND IRON ROD OR PIPE
- FOUND RIGHT OF WAY MARKER
- ACCESS CONTROL
- RECORD DATA
- ENGLISH EQUIVALENT
- EXISTING TREE/DIAMETER (INCHES)

NOTE:
 BEARINGS AND GRID DISTANCES
 BASED ON STATE PLANE
 COORDINATES NAD 83, EAST ZONE.
 GRID FACTOR = 1.00001605
 1 METER = 3.28083333 FEET.



PR. CURVE #16 PI STA = 10+229.362 $\Delta = 34^\circ 02' 16''$ (RT) R = 79.248 m T = 24.257 m L = 47.079 m E = 3.629 m e = N.C. T.R. = N.A. S.E. RUN = N.A. P.C. STA = 10+200.105 P.T. STA = 10+252.184	PR. CURVE #17 PI STA = 10+285.443 $\Delta = 24^\circ 12' 14''$ (LT.) R = 79.248 m T = 16.992 m L = 33.477 m E = 1.801 m e = N.C. T.R. = N.A. S.E. RUN = N.A. P.C. STA = 10+268.451 P.T. STA = 10+301.928	PR. CURVE #18 PI STA = 10+367.368 $\Delta = 26^\circ 09' 41''$ (LT.) R = 79.248 m T = 18.413 m L = 36.185 m E = 2.111 m e = N.C. T.R. = N.A. S.E. RUN = N.A. P.C. STA = 10+348.955 P.T. STA = 10+385.139	PR. CURVE #19 PI STA = 10+423.629 $\Delta = 33^\circ 33' 22''$ (RT.) R = 79.248 m T = 23.893 m L = 46.413 m E = 3.524 m e = N.C. T.R. = N.A. S.E. RUN = N.A. P.C. STA = 10+399.735 P.T. STA = 10+446.148
---	--	--	--

(361) - (403) S 00° 56' 23" E 134.582 m [441.54'] (362) - (368) S 16° 33' 56" E 4.682 m [15.36'] (363) - (373) S 79° 08' 07" E 9.402 m [30.85'] (364) - (374) S 24° 38' 21" E 3.980 m [13.06'] (365) - (368) S 74° 13' 17" W 32.355 m [106.15'] (367) - (409) S 56° 46' 12" E 10.030 m [32.91'] (368) - (370) S 13° 12' 30" E 23.777 m [77.99'] (370) - (377) S 81° 46' 07" W 28.950 m [94.98'] (371) - (386) N 81° 46' 07" E 9.083 m [29.80'] (372) - (397) S 13° 12' 30" E 5.804 m [19.03'] (373) - (372) N 88° 19' 30" E 77.975 m [255.76'] (374) - (380) N 89° 19' 30" E 9.235 m [30.30'] (375) - (397) N 13° 12' 30" W 66.057 m [216.67'] (376) - (410) S 00° 36' 30" E 64.770 m [212.50'] (377) - (378) S 19° 08' 07" E 6.652 m [21.82'] (378) - (396) S 24° 38' 21" E 8.650 m [28.38'] (379) - (376) S 53° 52' 57" W 11.394 m [37.38'] (380) - (378) N 74° 01' 45" E 8.790 m [28.84'] (381) - (378) N 74° 01' 45" W 26.431 m [86.72'] (382) - (376) N 67° 49' 24" E 3.600 m [11.81'] (383) - (396) N 61° 03' 02" E 18.056 m [59.24'] (384) - (408) S 85° 45' 29" E 26.036 m [85.42'] (385) - (398) S 13° 12' 30" E 63.521 m [208.35'] (386) - (399) N 13° 12' 30" W 29.814 m [97.79'] (387) - (388) S 13° 12' 30" E 23.868 m [78.29'] (388) - (383) S 00° 49' 16" E 8.467 m [27.78'] (389) - (388) N 87° 29' 53" F 17.586 m [57.70']	(383) - (384) S 62° 06' 41" W 33.615 m [110.29'] (383) - (388) N 62° 06' 41" E 19.910 m [65.32'] (383) - (389) N 88° 21' 34" E 15.834 m [51.95'] (384) - (400) S 00° 49' 16" E 122.650 m [402.42'] (384) - (385) S 81° 46' 07" W 13.000 m [42.65'] (385) - (386) S 81° 46' 07" W 35.485 m [116.42'] (385) - (387) S 53° 20' 55" W 31.251 m [102.53'] (386) - (398) S 13° 12' 30" E 9.321 m [30.57'] (387) - (398) N 60° 33' 15" W 9.082 m [29.80'] (388) - (389) S 11° 17' 51" W 9.035 m [29.64'] (388) - (390) N 87° 13' 03" E 90.904 m [298.24'] (390) - (391) S 00° 27' 36" E 7.765 m [25.48'] (391) - (392) S 00° 27' 36" E 29.871 m [98.00'] (392) - (393) S 00° 27' 36" E 11.880 m [38.98'] (393) - (394) S 00° 27' 36" E 6.096 m [20.00'] (394) - (395) N 90° 00' 00" E 15.805 m [51.85'] (395) - (406) S 00° 00' 00" W 119.721 m [392.79'] (396) - (409) N 61° 13' 25" W 1.265 m [4.15'] (396) - (410) N 24° 38' 21" W 6.980 m [22.89'] (397) - (407) N 85° 08' 13" E 4.431 m [14.54'] (397) - (408) S 83° 39' 19" W 4.206 m [13.80'] (398) - (401) N 60° 33' 15" W 5.397 m [17.71'] (399) - (400) S 89° 47' 31" W 55.403 m [181.72'] (400) - (401) S 00° 49' 16" E 41.273 m [135.42'] (401) - (402) S 00° 49' 16" E 18.769 m [61.58'] (401) - (406) N 88° 52' 57" E 91.170 m [299.11'] (402) - (405) S 89° 40' 00" W 207.921 m [682.15'] (403) - (404) S 00° 53' 34" E 15.248 m [50.03'] (404) - (405) S 00° 51' 18" E 6.788 m [22.27']
---	--



SURVEYOR'S STATEMENT

I, DONALD A. MILLER, HEREBY STATE THAT I AM A PROFESSIONAL LAND SURVEYOR OF THE STATE OF ILLINOIS THAT THE SURVEY OF PROPOSED SIX POINTS ROAD WAS MADE BY ME OR UNDER MY DIRECT SUPERVISION THAT THE LAND CORNER TIES AS SHOWN HEREON, ARE A TRUE AND CORRECT REPRESENTATION OF SAID SURVEY AND THAT THE PLAT HEREON IS IN ACCORDANCE WITH APPLICABLE SECTIONS OF THE LAND ACQUISITION POLICIES AND PROCEDURES TO THE CURRENT ILLINOIS MINIMUM STANDARDS FOR A BOUNDARY SURVEY.
 DATED MAY 10, 2007
 BY: *Donald A. Miller*
 DONALD A. MILLER PROFESSIONAL LAND SURVEYOR NO. 035-1966
 LICENSE EXPIRES DATE 11-30-08

ILLINOIS DEPT. OF TRANSPORTATION
 RIGHT OF WAY PLANS
 ROUTE EAP 704 (J-55 BL - VETERAN'S PARKWAY)
 SECTION 11 N & 1S-1
 PROJECT _____
 COUNTY McLEAN
 JOB NUMBER R-93-005-98
 STATION 11+600 TO 11+900
 SCALE 1:500 SHEET 3 OF 8

PARCEL NO. 3NP0010
 JOHN E. PLATTNER AND
 TARRY L. PLATTNER
 TOTAL HOLDING = 6205 sq m ± [64786 sq ft ±]
 TOTAL R.O.W. REQUIRED = 1172 sq m ± [12611 sq ft ±]
 REMAINDER = 5033 sq m ± [52175 sq ft ±]
 AREA IN TEMP. EASEMENT #1 = 243 sq m ± [2613 sq ft ±]
 AREA IN TEMP. EASEMENT #2 = 93 sq m ± [1002 sq ft ±]
 PURPOSE: ENTRANCE CONSTRUCTION, GRADING AND SHAPING

PARCEL NO. 3NP0011
 GREGORY G. EKDALE, DVM
 TOTAL HOLDING = 8967 sq m ± [96518 sq ft ±]
 TOTAL R.O.W. REQUIRED = 1652 sq m ± [17786 sq ft ±]
 REMAINDER = 7315 sq m ± [78132 sq ft ±]
 AREA IN TEMP. EASEMENT #1 = 296 sq m ± [3189 sq ft ±]
 AREA IN TEMP. EASEMENT #2 = 93 sq m ± [1002 sq ft ±]
 PURPOSE: ENTRANCE CONSTRUCTION, GRADING AND SHAPING

PARCEL NO. 3NP0009
 MICHAEL B. ZWENG, TRUSTEE OF JOAN ZWENG
 IRREVOCABLE TRUST DATED JUNE 13,
 2005(2/3 INT)
 AND MICHAEL B. ZWENG (1/3 INT)
 TOTAL HOLDING = 41102 sq m ± [442415 sq ft ±]
 TOTAL R.O.W. REQUIRED = 15 sq m ± [159 sq ft ±]
 REMAINDER = 41087 sq m ± [442256 sq ft ±]
 AREA IN TEMP. EASEMENT #1 = 183 sq m ± [1969 sq ft ±]
 AREA IN TEMP. EASEMENT #2 = 183 sq m ± [1969 sq ft ±]
 PURPOSE: ENTRANCE CONSTRUCTION, GRADING AND SHAPING

PARCEL NO. 3NP009A
 MICHAEL B. ZWENG, TRUSTEE OF JOAN ZWENG
 IRREVOCABLE TRUST DATED JUNE 13,
 2005(2/3 INT)
 AND MICHAEL B. ZWENG (1/3 INT)
 TOTAL HOLDING = 873 sq m ± [9402 sq ft ±]
 TOTAL R.O.W. REQUIRED = 216 sq m ± [2329 sq ft ±]
 REMAINDER = 657 sq m ± [7073 sq ft ±]
 AREA IN TEMP. EASEMENT #1 = 63 sq m ± [675 sq ft ±]
 AREA IN TEMP. EASEMENT #2 = 63 sq m ± [675 sq ft ±]
 PURPOSE: GRADING AND SHAPING

PARCEL NO. 3NP0012
 RONALD JONES, AS EX. AND TRUSTEE
 OF THE LAST WILL AND TESTAMENT OF J. R. MCCARTY
 TOTAL HOLDING = 16774 sq m ± [180553 sq ft ±]
 TOTAL R.O.W. REQUIRED = 75 sq m ± [808 sq ft ±]
 REMAINDER = 16699 sq m ± [179745 sq ft ±]
 AREA IN TEMP. EASEMENT #1 = 70 sq m ± [750 sq ft ±]
 AREA IN TEMP. EASEMENT #2 = 70 sq m ± [750 sq ft ±]
 PURPOSE: ENTRANCE CONSTRUCTION

NW 1/4 SEC. 16
 T. 23 N, R. 2 E,
 3RD P.M.