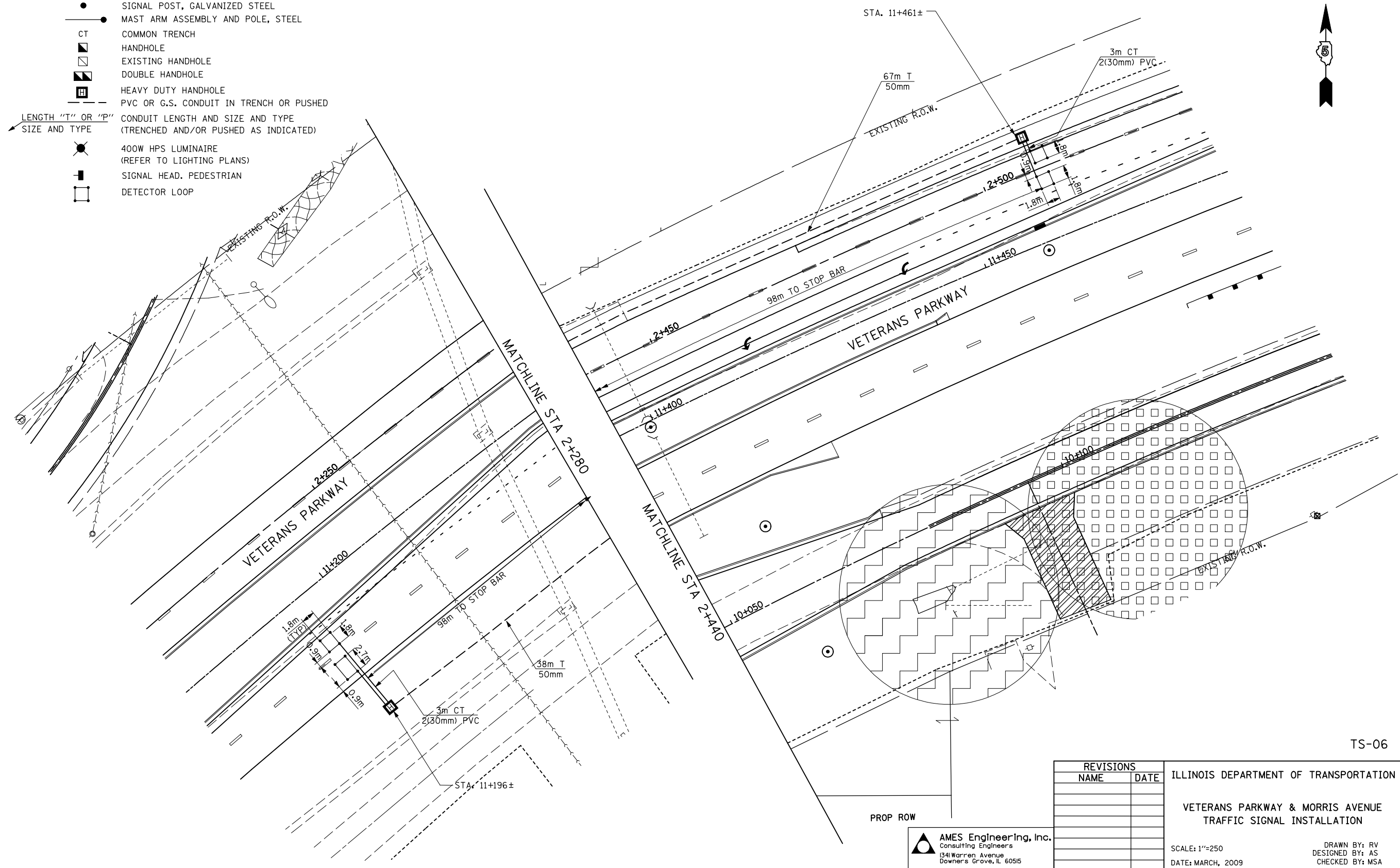


F.A.P. RTE.	SECTION	COUNTY	TOTAL SHEETS	SHEET NO.
704	(1)N & TS-1	McLean	497	255
STA.	TO STA.			
FED. ROAD DIST. NO.	ILLINOIS	FED. AID PROJECT		

CONTRACT NO. 70514

**PROPOSED TRAFFIC SIGNAL LEGEND**

- CONTROLLER LOCATED ON EXISTING FOUNDATION
- SERVICE INSTALLATION
- SIGNAL HEAD
- SIGNAL HEAD WITH BACK PLATE
- SIGNAL POST, GALVANIZED STEEL
- MAST ARM ASSEMBLY AND POLE, STEEL
- COMMON TRENCH
- HANDHOLE
- EXISTING HANDHOLE
- DOUBLE HANDHOLE
- HEAVY DUTY HANDHOLE
- PVC OR G.S. CONDUIT IN TRENCH OR PUSHED
- LENGTH "T" OR "P" SIZE AND TYPE CONDUIT LENGTH AND SIZE AND TYPE (TRENCHED AND/OR PUSHED AS INDICATED)
- 400W HPS LUMINAIRE (REFER TO LIGHTING PLANS)
- SIGNAL HEAD, PEDESTRIAN
- DETECTOR LOOP



\$FILES 10/14/2010 \$TIMES

TS-06

REVISIONS		ILLINOIS DEPARTMENT OF TRANSPORTATION
NAME	DATE	
		VETERANS PARKWAY & MORRIS AVENUE TRAFFIC SIGNAL INSTALLATION

SCALE: 1"=250  
DATE: MARCH, 2009

DRAWN BY: RV  
DESIGNED BY: AS  
CHECKED BY: MSA

**AMES Engineering, Inc.**  
Consulting Engineers  
1341 Warren Avenue  
Downers Grove, IL 60515