

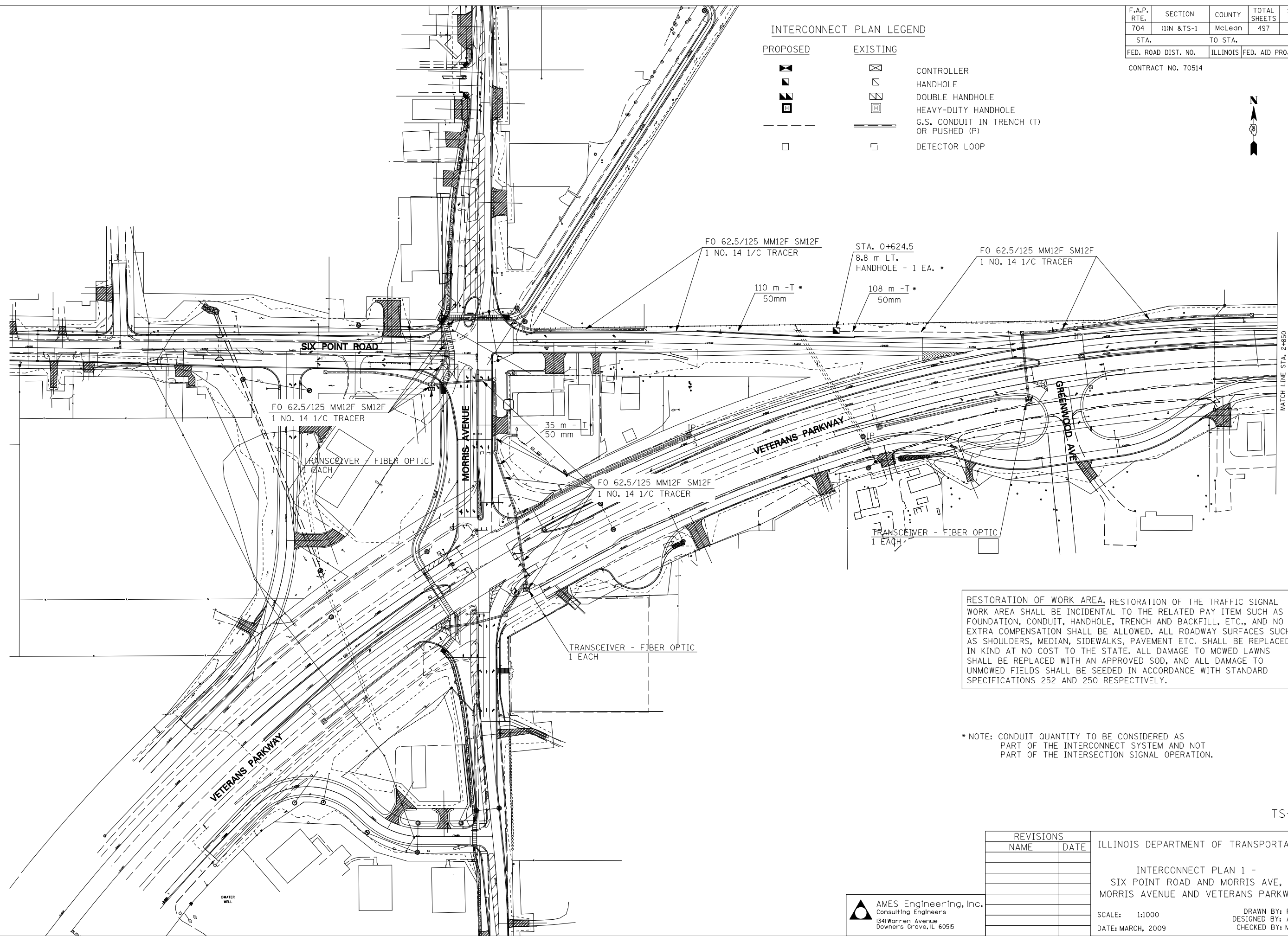
F.A.P. RTE.	SECTION	COUNTY	TOTAL SHEETS	SHEET NO.
704	(1)N & TS-1	McLean	497	264
STA.		TO STA.		
FED. ROAD DIST. NO.		ILLINOIS	FED. AID PROJECT	

CONTRACT NO. 70514



INTERCONNECT PLAN LEGEND

PROPOSED	EXISTING	
		CONTROLLER
		HANDHOLE
		DOUBLE HANDHOLE
		HEAVY-DUTY HANDHOLE
		G.S. CONDUIT IN TRENCH (T) OR PUSHED (P)
		DETECTOR LOOP



FO 62.5/125 MM12F SM12F
1 NO. 14 1/C TRACER

STA. 0+624.5
8.8 m LT.
HANDHOLE - 1 EA. *

FO 62.5/125 MM12F SM12F
1 NO. 14 1/C TRACER

110 m -T*
50mm

108 m -T*
50mm

FO 62.5/125 MM12F SM12F
1 NO. 14 1/C TRACER

TRANSCIVER - FIBER OPTIC
1 EACH

35 m -T
50 mm

FO 62.5/125 MM12F SM12F
1 NO. 14 1/C TRACER

TRANSCIVER - FIBER OPTIC
1 EACH

TRANSCIVER - FIBER OPTIC
1 EACH

RESTORATION OF WORK AREA. RESTORATION OF THE TRAFFIC SIGNAL WORK AREA SHALL BE INCIDENTAL TO THE RELATED PAY ITEM SUCH AS FOUNDATION, CONDUIT, HANDHOLE, TRENCH AND BACKFILL, ETC., AND NO EXTRA COMPENSATION SHALL BE ALLOWED. ALL ROADWAY SURFACES SUCH AS SHOULDERS, MEDIAN, SIDEWALKS, PAVEMENT ETC. SHALL BE REPLACED IN KIND AT NO COST TO THE STATE. ALL DAMAGE TO MOWED LAWNS SHALL BE REPLACED WITH AN APPROVED SOD, AND ALL DAMAGE TO UNMOWED FIELDS SHALL BE SEEDED IN ACCORDANCE WITH STANDARD SPECIFICATIONS 252 AND 250 RESPECTIVELY.

* NOTE: CONDUIT QUANTITY TO BE CONSIDERED AS PART OF THE INTERCONNECT SYSTEM AND NOT PART OF THE INTERSECTION SIGNAL OPERATION.

TS-15

FILE\$ 8/19/2010 \$TIME\$

AMES Engineering, Inc.
Consulting Engineers
1341 Warren Avenue
Downer's Grove, IL 60515

REVISIONS	
NAME	DATE

ILLINOIS DEPARTMENT OF TRANSPORTATION

INTERCONNECT PLAN 1 -
SIX POINT ROAD AND MORRIS AVE,
MORRIS AVENUE AND VETERANS PARKWAY

SCALE: 1:1000
DATE: MARCH, 2009

DRAWN BY: RV
DESIGNED BY: AS
CHECKED BY: MSA