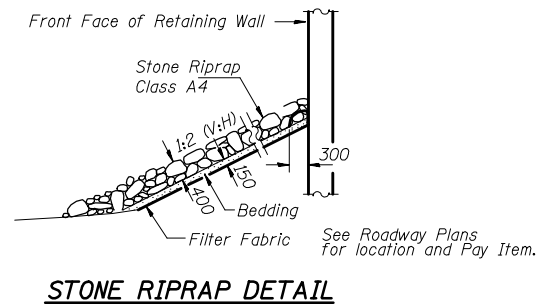
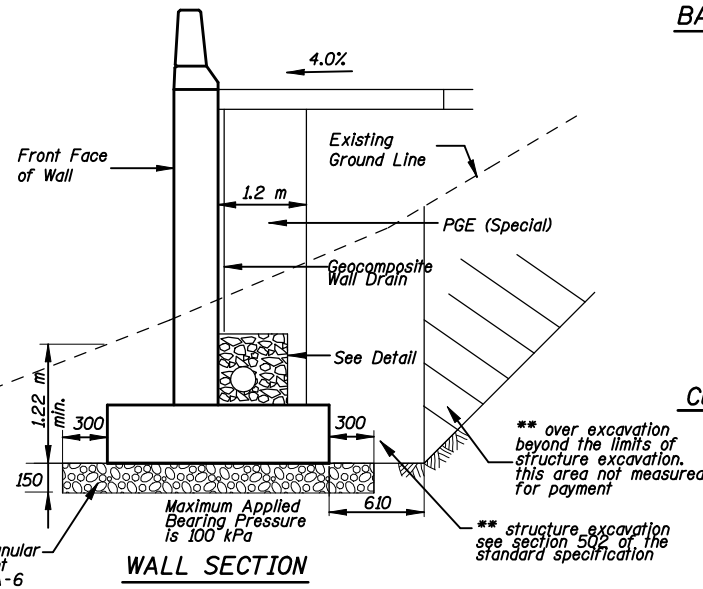


STATE OF ILLINOIS  
DEPARTMENT OF TRANSPORTATION

ROUTE NO.	SECTION	COUNTY	DATE	SHEET	SHEET NO. 9
F.A.P. 704	CDI	McLEAN	497	278	11 SHEETS
FED. ROAD DIST. NO.	ILLINOIS	FED. AID PROJECT	CONTRACT NO. 70514		

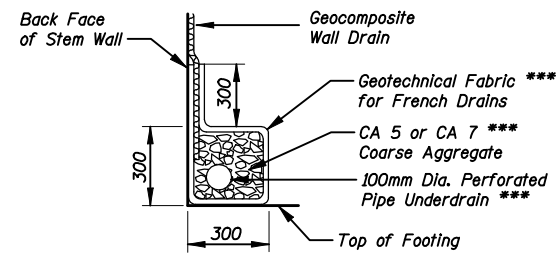


\*\* backfill remainder of structure excavation and over excavation with same material specified for roadway embankment



\*\* over excavation beyond the limits of structure excavation, this area not measured for payment

\*\* structure excavation see section 502 of the standard specification

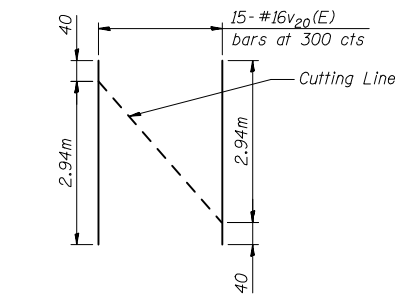
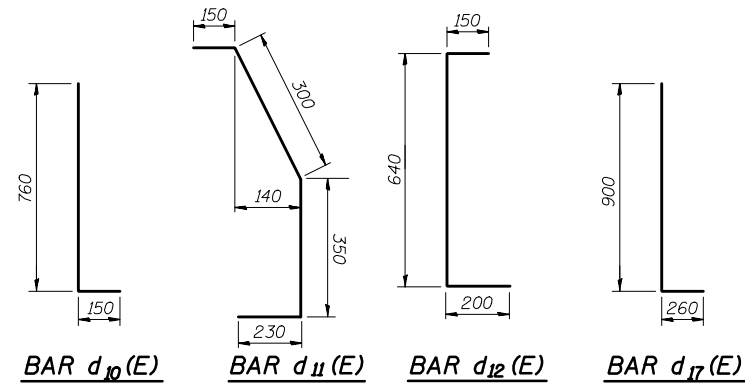


\*\*\* Cost Included with "Pipe Underdrains for Structures".



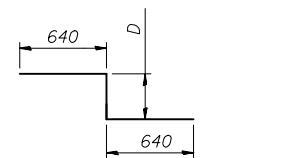
DESIGNED	JDA
CHECKED	WCT
DRAWN	MAC
CHECKED	WCT

DATE: 06-25-10

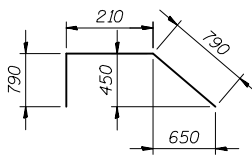


Cutting Diagram,  $v_{20}(E)$  Bars

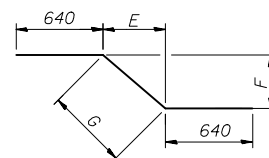
Cutting Diagram,  $h_{16}(E)$  Bars



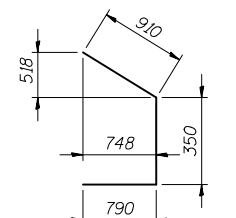
BARS  $z_{10}(E)$  thru  $z_{12}(E)$



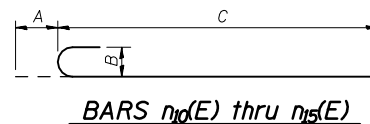
BAR  $d_{13}(E)$



BARS  $z_{13}(E)$  thru  $z_{15}(E)$



BAR  $d_{15}(E)$



BARS  $n_{10}(E)$  thru  $n_{15}(E)$

**BILL OF MATERIAL**

Bar	No.	Size	Length	Shape
$d_{10}(E)$	652	#16	0.910m	┌───┐
$d_{11}(E)$	326	#16	1.030m	┌───┐
$d_{12}(E)$	326	#16	0.990m	┌───┐
$d_{13}(E)$	4	#22	1.890m	┌───┐
$d_{14}(E)$	4	#22	5.740m	┌───┐
$d_{15}(E)$	4	#22	2.050m	┌───┐
$d_{16}(E)$	4	#22	3.210m	┌───┐
$d_{17}(E)$	44	#16	1.160m	┌───┐
$h_{10}(E)$	48	#16	7.070m	┌───┐
$h_{11}(E)$	12	#25	7.750m	┌───┐
$h_{12}(E)$	16	#16	7.640m	┌───┐
$h_{13}(E)$	4	#25	8.320m	┌───┐
$h_{14}(E)$	24	#16	6.350m	┌───┐
$h_{15}(E)$	6	#25	6.350m	┌───┐
$h_{16}(E)$	8	#16	4.770m	┌───┐
$h_{17}(E)$	2	#25	5.450m	┌───┐
$h_{18}(E)$	16	#16	6.920m	┌───┐
$h_{19}(E)$	4	#25	6.920m	┌───┐
$h_{20}(E)$	10	#16	7.070m	┌───┐
$h_{21}(E)$	8.3	#16	7.070m	┌───┐
$h_{22}(E)$	51	#16	6.350m	┌───┐
$h_{23}(E)$	54	#16	6.260m	┌───┐
$h_{24}(E)$	15	#16	5.710m	┌───┐
$h_{25}(E)$	12	#16	3.000m	┌───┐
$h_{26}(E)$	22	#16	4.860m	┌───┐
$h_{27}(E)$	4	#16	7.640m	┌───┐
$h_{28}(E)$	6	#16	6.350m	┌───┐
$h_{29}(E)$	6	#16	6.260m	┌───┐
$h_{30}(E)$	2	#16	6.920m	┌───┐
$h_{31}(E)$	36	#16	7.640m	┌───┐
$h_{32}(E)$	15	#16	6.920m	┌───┐
$n_{10}(E)$	117	#16	1.290m	┌───┐
$n_{11}(E)$	72	#22	1.890m	┌───┐
$n_{12}(E)$	199	#25	2.750m	┌───┐
$n_{13}(E)$	105	#22	2.270m	┌───┐
$n_{14}(E)$	36	#16	1.820m	┌───┐
$n_{15}(E)$	44	#16	1.900m	┌───┐
$n_{16}(E)$	46	#16	2.460m	┌───┐
$n_{17}(E)$	93	#16	3.150m	┌───┐
$n_{18}(E)$	298	#16	3.830m	┌───┐
$n_{19}(E)$	32	#22	5.870m	┌───┐
$n_{20}(E)$	18	#16	5.870m	┌───┐
$n_{21}(E)$	114	#16	3.530m	┌───┐
$n_{22}(E)$	50	#16	2.970m	┌───┐
$v_{10}(E)$	28	#16	1.670m	┌───┐
$v_{11}(E)$	37	#16	2.260m	┌───┐
$v_{12}(E)$	11	#16	2.860m	┌───┐
$v_{13}(E)$	6	#16	3.220m	┌───┐
$v_{14}(E)$	6	#16	3.270m	┌───┐
$v_{15}(E)$	5	#16	3.340m	┌───┐
$v_{16}(E)$	6	#16	3.420m	┌───┐
$v_{17}(E)$	3	#16	3.070m	┌───┐
$v_{18}(E)$	28	#16	3.210m	┌───┐
$v_{19}(E)$	3	#16	3.270m	┌───┐
$v_{20}(E)$	34	#16	2.980m	┌───┐
$v_{21}(E)$	3	#16	2.970m	┌───┐
$v_{22}(E)$	4	#16	3.040m	┌───┐
$v_{23}(E)$	3	#16	3.110m	┌───┐
$v_{24}(E)$	4	#16	3.170m	┌───┐
$v_{25}(E)$	3	#16	2.640m	┌───┐
$v_{26}(E)$	4	#16	2.700m	┌───┐
$v_{27}(E)$	3	#16	3.160m	┌───┐
$v_{28}(E)$	3	#16	3.350m	┌───┐
$v_{29}(E)$	72	#16	2.450m	┌───┐
$v_{30}(E)$	130	#22	2.770m	┌───┐
$v_{31}(E)$	69	#22	2.660m	┌───┐
$v_{32}(E)$	101	#16	2.400m	┌───┐
$v_{33}(E)$	36	#16	2.300m	┌───┐

**BILL OF MATERIAL CONT'D**

Bar	No.	Size	Length	Shape
$w_{10}(E)$	26	#16	6.350m	┌───┐
$w_{11}(E)$	112	#16	6.890m	┌───┐
$w_{12}(E)$	20	#16	4.590m	┌───┐
$w_{13}(E)$	56	#16	2.360m	┌───┐
$w_{14}(E)$	20	#16	5.160m	┌───┐
$w_{15}(E)$	36	#16	7.280m	┌───┐
$w_{16}(E)$	16	#16	6.920m	┌───┐
$z_{10}(E)$	21	#16	1.880m	┌───┐
$z_{11}(E)$	8	#16	1.600m	┌───┐
$z_{12}(E)$	19	#16	1.730m	┌───┐
$z_{13}(E)$	21	#16	2.130m	┌───┐
$z_{14}(E)$	8	#16	1.730m	┌───┐
$z_{15}(E)$	19	#16	1.920m	┌───┐
Concrete Structures		m <sup>3</sup>	258	
Reinforcement Bars, Epoxy Coated		kg	21,190	

Bars indicated thus 12 x 4-#15 etc. Indicates 12 lines of bars with 4 lengths per line.

Reinforcement bars designated (E) shall be epoxy coated. All construction joints shall be bonded.

**BARS  $n_{10}(E)$  thru  $n_{15}(E)$  Dimensions**

	A	B	C
$n_{10}(E)$	180	130	1.110m
$n_{11}(E)$	250	180	1.640m
$n_{12}(E)$	280	200	2.470m
$n_{13}(E)$	250	180	2.020m
$n_{14}(E)$	180	130	1.640m

**BARS  $z_{10}(E)$  thru  $z_{15}(E)$  Dimensions**

	D	E	F	G
$z_{10}(E)$	600	—	—	—
$z_{11}(E)$	320	—	—	—
$z_{12}(E)$	450	—	—	—
$z_{13}(E)$	—	600	600	849
$z_{14}(E)$	—	320	320	454
$z_{15}(E)$	—	450	450	636

**MIN. BAR LAP**

#16	640mm
#25	1.320m

DETAILS  
RETAINING WALL ALONG SIX POINTS ROAD  
F.A.P. ROUTE 704 SECTION (I) N&TS-1  
McLEAN COUNTY  
STATION 0+545.000 TO 0+635.000  
STRUCTURE NO. 057-W001